

STATE OF ILLINOIS  
DEPARTMENT OF TRANSPORTATION  
DIVISION OF HIGHWAYS

**PROPOSED  
HIGHWAY PLANS**

FAI ROUTE 57 (I-57)  
I-80 TO I-94 PROJECT: ACIM-057-7(289)344  
SECTION 2010-078-LS  
LANDSCAPING  
COOK COUNTY

C-91-773-10

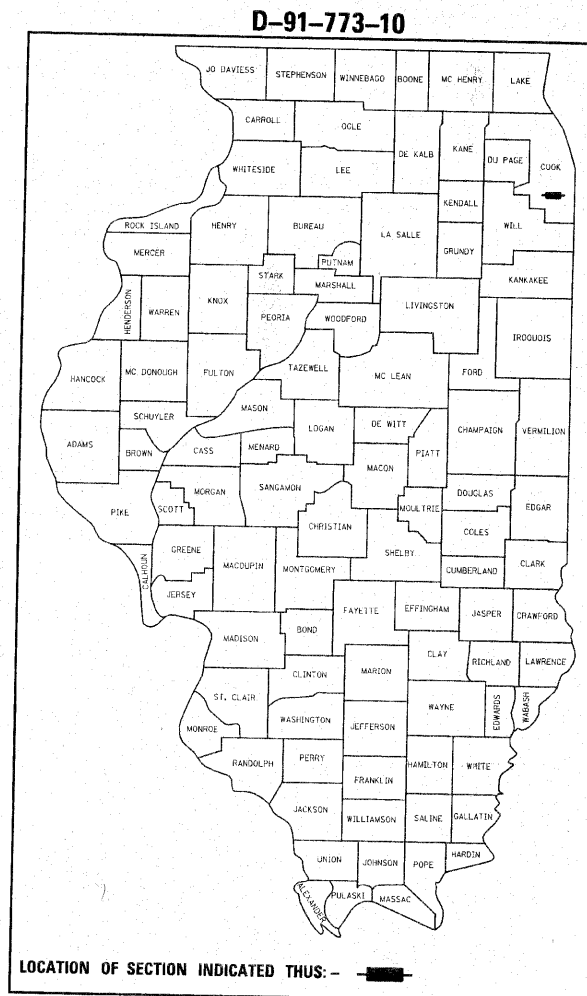
F.A.I. RTE.	SECTION	COUNTY	TOTAL SHEETS	SHEET NO.
57	2010-078-LS	COOK	7	1
		ILLINOIS	CONTRACT NO. 60L66	

FOR INDEX OF SHEETS, SEE SHEET NO. 2

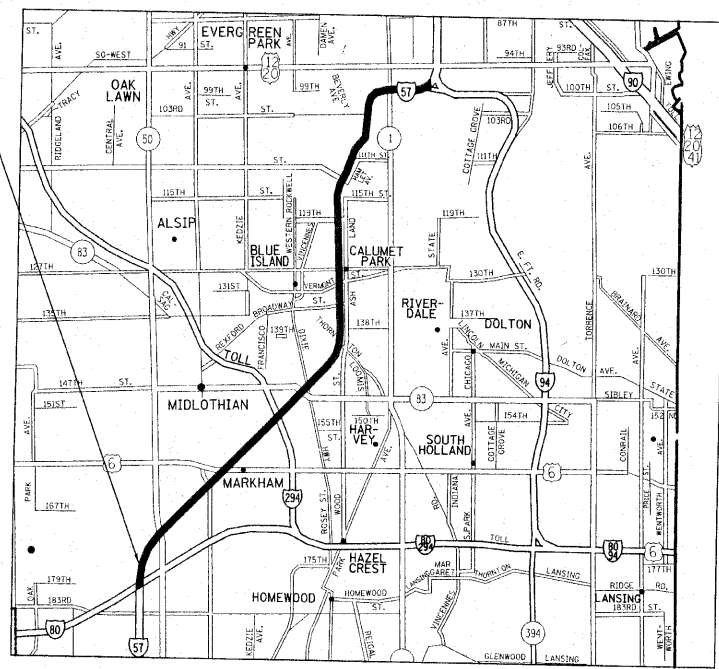
THE IMPROVEMENT IS LOCATED IN THE CITY OF CHICAGO  
VILLAGE OF CALUMET PARK  
CITY OF BLUE ISLAND  
VILLAGE OF RIVERDALE  
VILLAGE OF DIXMOOR  
VILLAGE OF POSEN  
CITY OF HARVEY  
CITY OF MARKHAM  
CITY OF OAKFOREST  
CITY OF COUNTRY CLUB HILLS

**TRAFFIC DATA**

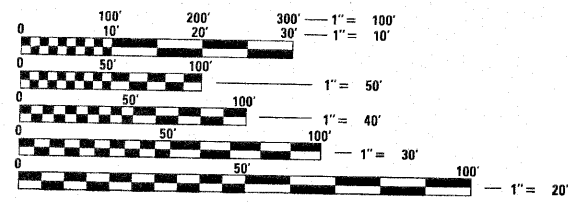
- ① I-57 NORTH OF IL 83  
ADT 2009 = 133,700  
POSTED SPEED LIMIT: 55 MPH
- ② I-57 SOUTH OF IL 83  
ADT 2009 = 111,500  
POSTED SPEED LIMIT: 55 MPH



LOCATION OF IMPROVEMENT  
I-57 SOUTH OF I-94 TO  
SOUTH OF I-80



CALUMET, THORTON, BREMEN TOWNSHIP



FULL SIZE PLANS HAVE BEEN PREPARED USING STANDARD ENGINEERING SCALES. REDUCED SIZED PLANS WILL NOT CONFORM TO STANDARD SCALES. IN MAKING MEASUREMENTS ON REDUCED PLANS, THE ABOVE SCALES MAY BE USED.

J.U.L.I.E.  
JOINT UTILITY LOCATION INFORMATION FOR EXCAVATION  
1-800-892-0123  
OR 811

DISTRICT ONE BUREAU OF MAINTENANCE: J. STUMPNER  
MAINTENANCE LANDSCAPE DESIGNER: R. WANNER (847) 705-4171

CONTRACT NO. 60L66

GROSS LENGTH = 72864 FT. = 13.8 MILE

STATE OF ILLINOIS  
DEPARTMENT OF TRANSPORTATION  
DIVISION OF HIGHWAYS

SUBMITTED August 31, 2010

*Diane M. O'Keefe*  
DEPUTY DIRECTOR OF HIGHWAYS, REGION ENGINEER

October 1, 2010  
*Scott E. Stitt, P.E.*  
acting ENGINEER OF DESIGN AND ENVIRONMENT

October 1, 2010  
*Christine M. Reed*  
DIRECTOR OF HIGHWAYS, CHIEF ENGINEER

**PRINTED BY THE AUTHORITY  
OF THE STATE OF ILLINOIS**

INDEX OF SHEETS

SHEET NUMBER	DESCRIPTION
1	COVER SHEET
2	INDEX OF SHEETS GENERAL NOTES STATE STANDARDS
3	SUMMARY OF QUANTITIES
4	SCHEDULE OF CONSTRUCTION AND ESTABLISHMENT WORK
5 - 6	TYPICAL DETAILS
7	TCL1 - TRAFFIC CONTROL DETAILS FOR FREEWAY SHOULDER CLOSURES PARTIAL RAMP CLOSURES

GENERAL NOTES

- THE CONTRACTOR MUST CONDUCT HIS OWN INVESTIGATIONS INTO THE LOCATION, SIZE, DEPTH, AND NATURE OF ANY AND ALL EXISTING UTILITIES WHICH MAY IMPACT THE WORK UNDER THIS CONTRACT. ANY EXISTING UTILITIES WHICH ARE TO REMAIN IN SERVICE MUST BE FULLY PROTECTED BY THE CONTRACTOR AND ANY DAMAGE CAUSED BY THE CONSTRUCTION MUST BE IMMEDIATELY REPAIRED AT THE CONTRACTOR'S EXPENSE TO THE SATISFACTION OF THE ENGINEER. THE CONTRACTOR WILL BE RESPONSIBLE FOR THE PROTECTION OF ANY AND ALL SURFACE AND UNDERGROUND UTILITIES, EVEN THOUGH THEY MAY NOT BE IDENTIFIED ON THE PLANS.
- THE CONTRACTOR MUST COORDINATE CONSTRUCTION ACTIVITIES WITH THE RESPECTIVE UTILITIES OF THE CITY OF CHICAGO, BEFORE STARTING ANY EXCAVATION. THE CONTRACTOR MUST CALL THE CHICAGO UTILITY ALERT NETWORK (C.U.A.N.) AT 312-744-7000 FOR FIELD LOCATIONS OF BURIED ELECTRICAL, TELEPHONE, CABLE, AND GAS FACILITIES (48 HOURS NOTIFICATION IS REQUIRED). THE CONTRACTOR MUST CONTACT THE CITY OF CHICAGO DEPARTMENT OF WATER MANAGEMENT, PERMIT SECTION AT 312-747-7893 FOR WATER AND CITY SEWER LOCATIONS.
- PRIOR TO EXCAVATING, CALL JOINT UTILITIES LOCATION INFORMATION FOR EXCAVATORS (J.U.L.I.E.) AT 1.800.892.0123.
- BEFORE ANY EXCAVATION STARTS, THE LANDSCAPE CONTRACTOR SHALL CONTACT THE IDOT ELECTRICAL MAINTENANCE CONTRACTOR, 48 HOURS PRIOR TO ANY EXCAVATION TO MARK OUT UNDERGROUND IDOT CABLES. THE LANDSCAPE CONTRACTOR SHALL PRESERVE THESE MARKINGS; ANY ADDITIONAL REQUESTS MADE BY THE LANDSCAPE CONTRACTOR WILL BE AT THEIR OWN EXPENSE.
- THE CONTRACTOR WILL NOT BE ALLOWED TO SET UP A YARD OR FIELD OFFICE ON STATE PROPERTY WITHOUT WRITTEN PERMISSION FROM IDOT.
- THE CONTRACTOR MUST USE CARE IN GRADING OR EXCAVATING NEAR ANY AND ALL EXISTING ITEMS THAT WILL NOT BE REMOVED. ANY DAMAGE DONE TO EXISTING ITEMS BY THE CONTRACTOR MUST BE REPAIRED BY THE CONTRACTOR AT THE CONTRACTOR'S OWN EXPENSE TO THE SATISFACTION OF THE ENGINEER.
- THE CONTRACTOR SHALL CONTACT THE DISTRICT ONE TRAFFIC CONTROL SUPERVISOR AT 847.705.4155 A MINIMUM OF 72 HOURS IN ADVANCE OF BEGINNING WORK.
- THE CONTRACTOR SHALL NOT PARK ANY EQUIPMENT OR STORE ANY MATERIAL WITHIN 50 FEET OF ANY RAILROAD.
- IT SHALL BE THE CONTRACTOR'S RESPONSIBILITY TO VERIFY CONDITIONS EXISTING IN THE FIELD PRIOR TO CONSTRUCTION AND ORDERING OF MATERIALS.
- ANY SIGNS OR PAVEMENT MARKERS DAMAGED OR DESTROYED AS A RESULT OF LANDSCAPE WORK SHALL BE REPLACED AND PAID FOR BY THE CONTRACTOR.
- THE CONTRACTOR MUST TAKE ALL NECESSARY SAFETY PRECAUTIONS TO PROTECT AND PROVIDE ACCESS TO ADJUTING PROPERTY, UTILITIES, PEDESTRIANS, AND VEHICULAR TRAFFIC.

12. DURING CONSTRUCTION OPERATIONS, IF ANY LOOSE MATERIAL IS DEPOSITED IN THE FLOW LINE OF DRAINAGE STRUCTURES SUCH THAT THE NATURAL FLOW OF WATER IS OBSTRUCTED, THE MATERIAL SHALL BE REMOVED AT THE CLOSE OF EACH WORKING DAY. AT THE CONCLUSION OF CONSTRUCTION OPERATIONS, ALL UTILITY STRUCTURES SHALL BE FREE FROM DUST AND DEBRIS. THE WORK SPECIFIED ABOVE WILL NOT BE PAID SEPARATELY BUT SHALL BE INCLUDED IN THE COST OF THE CONTRACT.

15. CONTRACTOR SHALL REPAIR IN KIND ANY OF THE VARIOUS EXISTING GRASS AREAS DAMAGED AS A RESULT OF LANDSCAPE OPERATIONS. THIS WORK WILL NOT BE PAID FOR SEPARATELY, BUT THE COSTS SHALL BE CONSIDERED AS INCLUDED IN THE CONTRACT UNIT PRICES FOR THE CONSTRUCTION ITEMS INVOLVED, AND NO ADDITIONAL COMPENSATION WILL BE ALLOWED. THE CONTRACTOR SHALL UTILIZE THE VARIOUS SEED MIXTURES INCLUDED IN THE SPECIFICATIONS AND AS SHOWN ON THE PLANS FOR THIS REPAIR WORK.

16. THE CONTRACTOR SHALL NOT BE ALLOWED TO PROCEED WITH ANY PLANTING WORK UNTIL ALL UTILITY OWNERS FIELD LOCATED THEIR FACILITIES WHICH MAY INTERFERE WITH CONSTRUCTION OPERATIONS. THE ACTUAL LOCATION OF PROPOSED LANDSCAPING WILL BE ADJUSTED IN THE FIELD TO AVOID UTILITIES.

17. UNDERBRUSH OR DEBRIS AT PLANTING LOCATIONS SHALL BE REMOVED AND DISPOSED OF IN ACCORDANCE WITH SECTION 202.03 OF THE IDOT STANDARD SPECIFICATIONS. THIS WORK WILL NOT BE PAID FOR SEPARATELY, BUT THE COSTS SHALL BE CONSIDERED AS INCLUDED IN THE CONTRACT UNIT PRICES FOR THE CONSTRUCTION ITEMS INVOLVED, AND NO ADDITIONAL COMPENSATION WILL BE ALLOWED.

18. CONTRACTOR SHALL PERFORM DUE DILIGENCE IN LOCATING SPECIFIED PLANT MATERIAL.

19. NO SUBSTITUTIONS OR PLANT MATERIAL, QUANTITIES, OR SIZES SHALL BE ALLOWED UNLESS APPROVED BY THE ENGINEER.

20. NO TREE PLANTINGS SHALL BE LOCATED WITHIN THE HIGHWAY CLEAR-ZONES.

21. NO PLANT MATERIAL IS TO BE INSTALLED ON SITE WITHOUT APPROPRIATE IDOT ORANGE PLANT SEAL.

22. ALL TREE AND SHRUB BEDS SHALL RECEIVE 4 INCHES OF MULCH. NEWLY INSTALLED TREES NOT LOCATED WITHIN A BED SHALL BE MULCHED WITH A SIX-FOOT DIAMETER RING WITH A CULTIVATED EDGE AT THE BASE OF EACH TREE (REMOVE EXISTING TURF).

23. TREES SHALL BE SET IN TRUE, VERTICAL ALIGNMENT AFTER PLANTING.

24. EXISTING TREES SHALL BE MULCHED SO THE MULCH RING EXTENDS THREE (3) FEET BEYOND THE TRUNK OF THE TREE.

25. UNLESS NOTED OTHERWISE, ALL SHRUBS SHALL BE PLANTED IN MULCHED BEDS. THE EDGE OF THE MULCH BED SHALL EXTEND A MINIMUM OF THREE (3) FEET BEYOND THE CENTERS OF THE PERIPHERAL PLANTS IN THE BEDS.

26. THE ENGINEER WILL CONTACT FABIOLA QUIROZ OF THE ROADSIDE DEVELOPMENT UNIT AT 847.705.4596, AT LEAST TEN (10) DAYS PRIOR TO INTERSEEDING, CLASS 4A (MODIFIED); SEEDING, CLASS 4 (MODIFIED); AND SEEDING, CLASS 4 (SPECIAL) FOR LAYOUT.

27. AREAS TO BE SEEDED BETWEEN NOVEMBER 15 TO MARCH 30 SHALL REQUIRE DORMANT SEEDING, WHICH SHALL BE INCLUDED IN THE COST OF SEEDING, CLASS 4 (MODIFIED) AND SEEDING, CLASS 4 (SPECIAL).

28. CONTRACTOR SHALL SUPPLY DIFFERENT COLORED FLAGS LABELLED WITH THE VARIOUS TREE SPECIES IN THIS CONTRACT. CONTRACTOR SHALL ALSO PROVIDE ADDITIONAL FLAGS FOR LAYOUT OF THE VARIOUS LANDSCAPE ITEMS, (2) CASES OF PAINT OF (2) DIFFERENT COLORS, AND RIBBON OF AT LEAST (3) DIFFERENT COLORS AT THE TIME OF THE PRE-CONSTRUCTION MEETING FOR LAYOUT.

STATE STANDARDS

701001 - 02	OFF-ROAD OPERATIONS, 2L, 2W MORE THAN 15'
701006 - 03	OFF-ROAD OPERATIONS, MULTILANE MORE THAN 15' AWAY FROM PAVEMENT EDGE
701101 - 02	OFF-ROAD OPERATIONS, MULTILANE LESS THAN 15' AWAY FROM PAVEMENT EDGE
701106 - 02	OFF-ROAD OPERATIONS, 2L, 2W, 15' TO 24' FROM PAVEMENT EDGE
701301 - 03	LANE CLOSURE 2L, 2W SHORT TIME OPERATIONS
701311 - 03	LANE CLOSURE 2L, 2W MOVING OPERATIONS - DAY ONLY
701400 - 04	APPROACH TO LANE CLOSURE, FREEWAY / EXPRESSWAY
701401 - 05	LANE CLOSURE FREEWAY / EXPRESSWAY
701411 - 06	LANE CLOSURE, MULTILANE, AT ENTRANCE OR EXIT RAMP, FOR SPEEDS > 45 MPH
701501 - 05	URBAN LANE CLOSURE, 2L, 2W, UNDIVIDED
701601 - 06	URBAN LANE CLOSURE, MULTILANE, 1W OR 2W WITH NONTRAVERSABLE MEDIAN
701606 - 06	URBAN LANE CLOSURE, MULTILANE, 2W WITH MOUNTABLE MEDIAN
701901 - 01	TRAFFIC CONTROL DEVICES

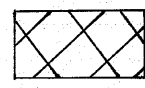
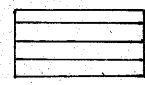
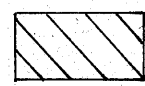
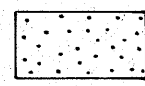

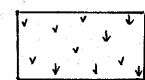
FILE NAME =	USER NAME = delrosarios	DESIGNED -	REVISED -	<b>STATE OF ILLINOIS DEPARTMENT OF TRANSPORTATION</b>	<b>GENERAL NOTES AND STATE STANDARDS</b>	F.A.I. RTE.	SECTION	COUNTY	TOTAL SHEETS	SHEET NO.		
ct\pw_work\p\dot\delrosarios\d0107469	landscape.os.dgn	DRAWN -	REVISED -			57	2010-078-LS	COOK	7	2		
PLOT SCALE = 50.0000' / IN.	CHECKED -	REVISED -	SCALE:			SHEET NO.	OF	SHEETS	STA.	TO STA.	FED. ROAD DIST. NO.	ILLINOIS FED. AID PROJECT
PLOT DATE = 9/3/2010	DATE -	REVISED -									CONTRACT NO. 60L66	

SUMMARY OF QUANTITIES			URBAN 90% FED. 10% STATE		CONSTRUCTION TYPE CODE					SUMMARY OF QUANTITIES			URBAN 90% FED. 10% STATE		CONSTRUCTION TYPE CODE					
CODE NO	ITEM	UNIT	TOTAL QUANTITIES							CODE NO	ITEM	UNIT	TOTAL QUANTITIES							
				0031										0031						
A2007816	TREE, TILIA AMERICANA (AMERICAN LINDEN/ BASSWOOD), 2" CALIPER, BALLED AND BURLAPPED	EACH	43	43						20101350	TREE PRUNING (OVER 10 INCH DIAMETER)	EACH	38	38						
A2012122	TREE, AESCULUS <sup>X</sup> AUTUMN SPLENDOR (AUTUMN SPLENDOR BUCKEYE), 1-3/4" CALIPER, BALLED AND BURLAPPED, MATCHING HEADS	EACH	29	29						21101605	TOPSOIL FURNISH AND PLACE, 2"	SQ YD	17,515	17,515						
B2001616	TREE, CRATAEGUS CRUGALLI INERMIS (THORN LESS COCKSPUR HAWTHORN), 2" CALIPER, TREE FORM, BALLED AND BURLAPPED	EACH	45	45						21101615	TOPSOIL FURNISH AND PLACE, 4"	SQ YD	1660	1660						
B2006116	TREE, SYRINGA PEKINENSIS MORTON (CHINA SNOW PEKING LILAC), 2" CALIPER, TREE FORM, BALLED AND BURLAPPED	EACH	30	30						21101625	TOPSOIL FURNISH AND PLACE, 6"	SQ YD	185	185						
C2005936	SHRUB, RHUS GLABRA (SMOOTH SUMAC), 3' HEIGHT, CONTAINER	EACH	426	426						25000210	SEEDING, CLASS 2A	ACRE	4	4						
E2020061	VINE-PARTHENOCISSUS QUINQUEFOLIA (VIRGINIA CREEPER), 1-GALLON POT	EACH	1000	1000						25000400	NITROGEN FERTILIZER NUTRIENT	POUND	360	360						
K0026850	PERENNIAL PLANT CARE	SQ YD	1300	1300						25000500	PHOSPHORUS FERTILIZER NUTRIENT	POUND	360	360						
K0029618	WEED CONTROL, BROADLEAF IN TURF	GALLON	10	10						25000600	POTASSIUM FERTILIZER NUTRIENT	POUND	360	360						
K0029624	WEED CONTROL, TEASEL	GALLON	10	10						25000750	MOWING	ACRE	90	90						
K0029632	WEED CONTROL, NON-SELECTIVE AND NON-RESIDUAL	GALLON	80	80						25100630	EROSION CONTROL BLANKET	SQ YD	29040	29040						
K0029634	WEED CONTROL, PRE-EMERGENT GRANULAR HERBICIDE	POUND	300	300						25100900	TURF REINFORCEMENT MAT	SQ YD	1080	1080						
K1003680	MULCH	SQ YD	100	100						28000305	TEMPORARY DITCH CHECKS	FOOT	42	42						
K1003660	MOWING CYCLES	EACH	2	2						67100100	MOBILIZATION	L SUM	1	1						
X0324854	WEED CONTROL, NATIVE GRASS RESTORATION	GALLON	5	5						A2002008	TREE, AESCULUS FLAVEA (YELLOW SWEET BUCKEYE), 2" CALIPER, BALLED AND BURLAPPED	EACH	31	31						
X0325222	WEED CONTROL, BASAL TREATMENT	GALLON	20	20						A2002716	TREE, CARYA OVATA (SHAGBARK HICKORY), 2" CALIPER, BALLED AND BURLAPPED	EACH	30	30						
X2010300	TREE REMOVAL (UNDER 6 UNITS DIAMETER)	UNIT	125	125						A2002916	TREE, CELTIS OCCIDENTALIS (COMMON HACKBERRY), 2" CALIPER, BALLED AND BURLAPPED	EACH	95	95						
X2501750	SEEDING, CLASS 4 (SPECIAL)	ACRE	3.5	3.5						A2005016	TREE, GYMNOCLADUS DIOICUS (KENTUCKY COFFEETREE), 2" CALIPER, BALLED AND BURLAPPED	EACH	136	136						
<del>X2501800</del>	<del>SEEDING, CLASS 4 (MODIFIED)</del>	<del>ACRE</del>	<del>1</del>	<del>1</del>						A2005116	TREE, JUGLANS NIGRA (BLACK WALNUT), 2" CALIPER, BALLED AND BURLAPPED	EACH	29	29						
X7011015	TRAFFIC CONTROL AND PROTECTION (EXPRESSWAYS)	L SUM	1	1						A2006416	TREE, QUERCUS ALBA (WHITE OAK), 2" CALIPER, BALLED AND BURLAPPED	EACH	23	23						
Z0064800	SELECTIVE CLEARING	UNIT	300	300						A2006516	TREE, QUERCUS BICOLOR (SWAMP WHITE OAK), 2" CALIPER, BALLED AND BURLAPPED	EACH	82	82						
A2008818	TREE, ULMUS AMERICANA VALLEY FORGE (VALLEY FORGE AMERICAN ELM), 2" CALIPER, BALLED AND BURLAPPED	EACH	47	47						A2006616	TREE, QUERCUS IMBRICARIA (SHINGLE OAK), 2" CALIPER, BALLED AND BURLAPPED	EACH	55	55						
AZ007064	TREE, MALUS PRAIRIE ROSE (PRAIRIE ROSE CRABAPPLE), 1-1/2" CALIPER, LOW-BRANCHED, BALLED AND BURLAPPED	EACH	27	27						A2006716	TREE, QUERCUS MACROCARPA (BUR OAK), 2" CALIPER, BALLED AND BURLAPPED	EACH	75	75						
B2005468	TREE, PRUNUS VIRGINIANA SCHUBERT (CANADA RED CHOKECHERRY), 6' HEIGHT, CLUMP FORM, BALLED AND BURLAPPED	EACH	26	26						A2007666	TREE, TAXODIUM DISTICHUM (COMMON BALD CYPRESS), 6' HEIGHT, CLUMP FORM, BALLED AND BURLAPPED	EACH	26	26						
20100110	TREE REMOVAL (6 TO 15 UNITS DIAMETER)	UNIT	600	600						X2503315	INTERSEEDING, CLASS 4A (MODIFIED)	ACRE	25	25						
20100210	TREE REMOVAL (OVER 15 UNITS DIAMETER)	UNIT	230	230						X0327075	MOWING (SPECIAL)	SQ YD	20,000	20,000						
20101300	TREE PRUNING (1 TO 10 INCH DIAMETER)	EACH	43	43																

# CALENDAR OF CONSTRUCTION AND ESTABLISHMENT WORK

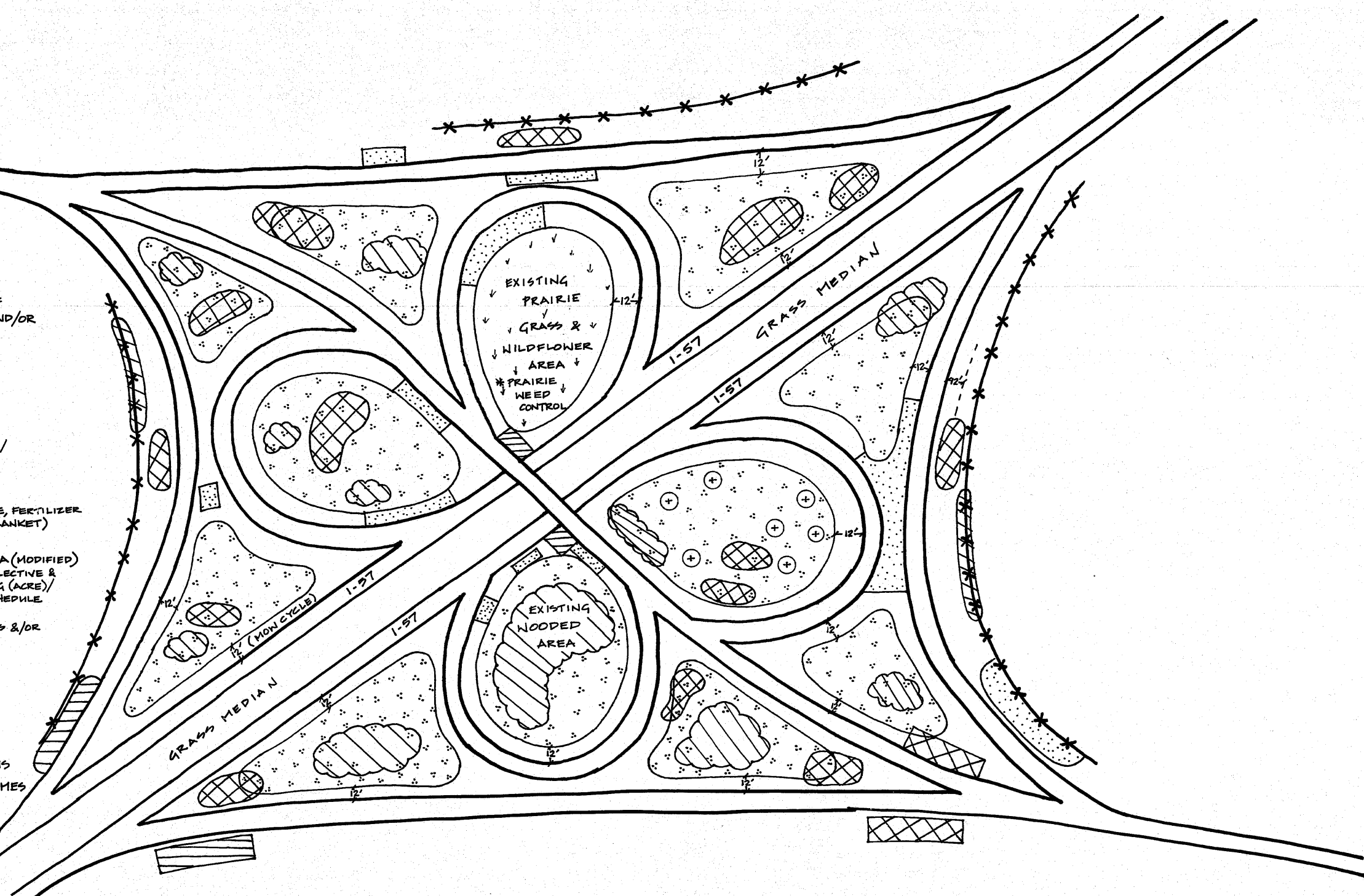
Item	January	February	March	April	May	June	July	August	September	October	November	December	January	February	March	April	May
<b>Plant Material</b>																	
Submit completed plant inspection forms to IDOT by Jan 31 for spring planting season																	
<b>Vegetation Management - Woody Plant Material</b>																	
Tree Pruning: November 15 - April 15																	
Selective Clearing: November 15 to April 15																	
Tree Removal: Jan 1 - November 30																	
<b>Vegetation Management - Herbaceous Weed</b>																	
Mowing (for broadleaf in turf)																	
Weed Control, Broadleaf in Turf																	
Weed Control, Teasel																	
Weed Control, Native Grass Restoration																	
<b>Seeding</b>																	
Seeding, Class 2A Spring: March 15 - June 1 Fall: Aug 1 - Sept 15 Dormant: Nov 15 - March 15																	
Seeding, Class 4 (Modified) Seeding, Class 4 (Special) Dormant: November 15 - March 30																	
Mowing: Mow area to be interseeded to a maximum height of 3"																	
Weed Control, Non-Selective, Non-Residual: spray area to be interseeded																	
Interseeding, Class 4A (Modified) Dormant: Nov 15 - Nov 31																	
<b>Tree / Shrub / Vine Planting</b>																	
Spring plantings of balled and burlapped & container stock: March 15 - May 30																	
Seedlings, broadleaf evergreens, vines & willow, poplar, oak, alder, birch, hawthorn, red maple, cherry & pear (See PLANTING WOODY PLANTS SPECIAL PROVISION for complete list ) only in spring: March 15 - May 30																	
Evergreens (spring): March 15 - April 30																	
REPLACEMENTS - Fall (ONLY) plantings of balled and burlapped: Oct 15 - Nov 30																	
REPLACEMENTS: Seedlings, broadleaf evergreens, vines & willow, poplar, oak, alder, birch, hawthorn, red maple, cherry & pear (See PLANTING WOODY PLANTS SPECIAL PROVISION for complete list ) only in spring: March 15 - May 15																	
Pre-Emergent Granular Herbicide - shall be applied prior to mulch application																	
<b>Plant Care</b>																	
Perennial Plant Care:																	
Mulch Placement: June 1 to October 15																	

**LEGEND**

-  WEED CONTROL OF EXISTING TEASEL AND/OR PHRAGMITES
-  WEED CONTROL - BASAL TREATMENT
-  SELECTIVE CLEARING AND/OR TREE REMOVAL/ PRUNING
-  SEEDING, CLASS 2A (TOPSOIL FURNISH & PLACE, FERTILIZER NUTRIENTS, SEED, & BLANKET)
-  INTERSEEDING, CLASS 4A (MODIFIED) (WEED CONTROL, NON-SELECTIVE & NON-RESIDUAL/MOWING (ACRE)/ INTERSEEDING) - SEE SCHEDULE
-  EXISTING PRAIRIE GRASSES &/OR WILDFLOWERS (PRAIRIE WEED CONTROL)

**NOTES**

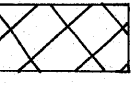

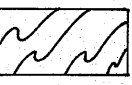
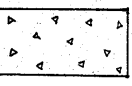
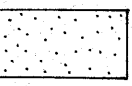
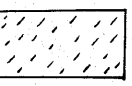
- VARIOUS WORK WILL BE AT VARIOUS LOCATIONS AT VARIOUS TIME FRAMES AS NEEDED TO ERADICATE UNDESIRABLE WEEDS BECAUSE CERTAIN WEEDS MAY REQUIRE ADDITIONAL SPOT SPRAYING.
- AREAS TO BE INTERSEEDED SHALL BE MOWED (3 TIMES), SPRAYED WITH WEED CONTROL, NON-SELECTIVE & NON-RESIDUAL (3 TIMES), AND INTERSEEDED WITH CLASS 4A (MODIFIED).
- MOW CYCLE SHALL CONSIST OF THE 12' GRASS AREA ALONG THE SHOULDER, THE GRASS MEDIANS, AND THE WIDER MERGE AREAS WHERE SIGHT DISTANCE MAY BE AN ISSUE.



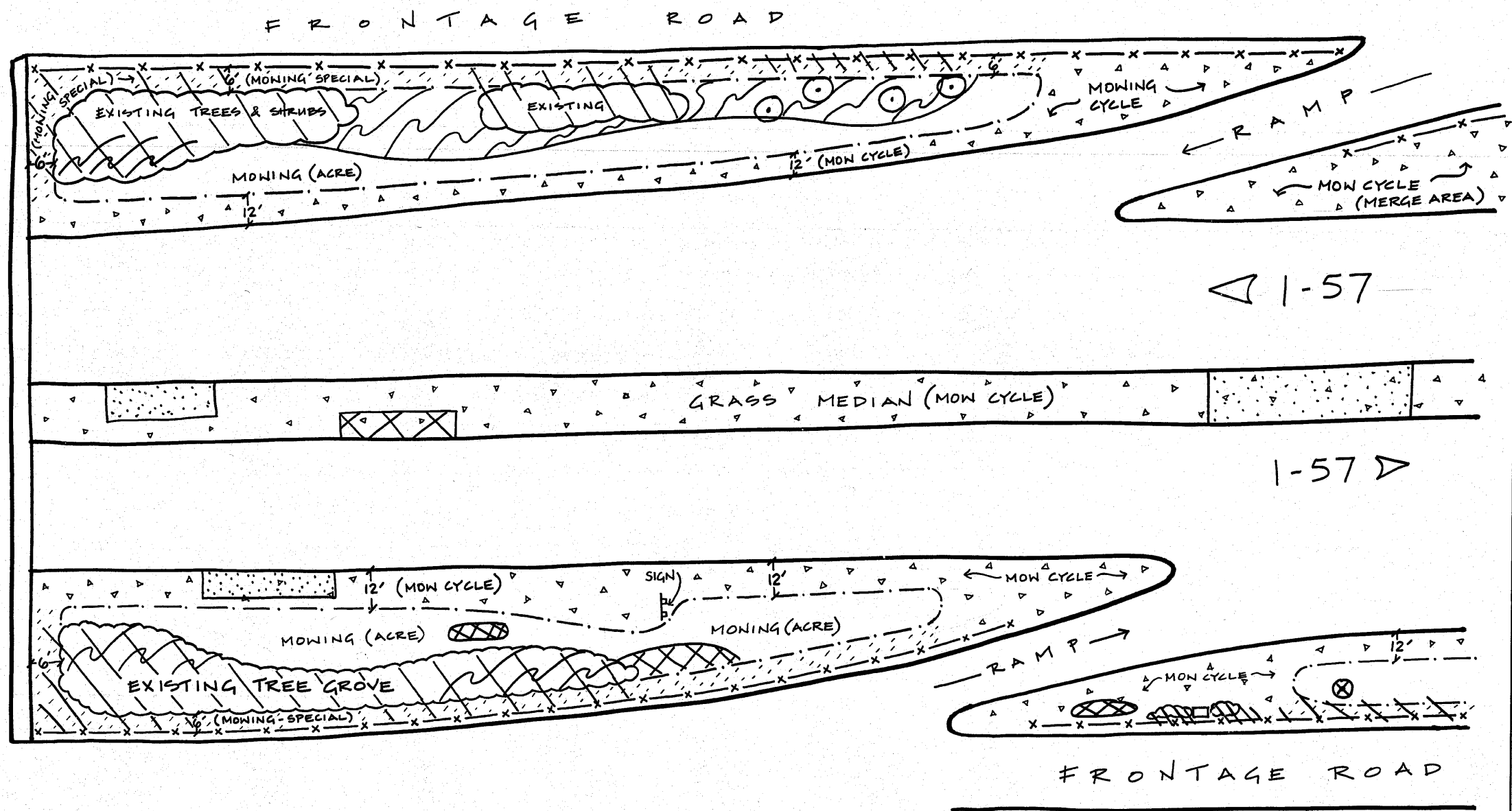
\* NOT TO SCALE

FILE NAME =	USER NAME = delrosarios	DESIGNED -	REVISED -	<b>STATE OF ILLINOIS DEPARTMENT OF TRANSPORTATION</b>	<b>TYPICAL DETAIL (INTERCHANGE)</b>	F.A. RTE.	SECTION	COUNTY	TOTAL SHEETS	SHEET NO.
at\pw_work\pwidot\delrosarios\d8107469\	landscape_aa.dgn	DRAWN -	REVISED -			57	2010-078-LS	COOK	7	5
PLOT SCALE = 1/8" = 1'-0"	PLOT DATE = 9/16/2010	CHECKED -	REVISED -			CONTRACT NO. 60L66				
					SCALE:	SHEET NO. OF SHEETS STA. TO STA.				
ILLINOIS FED. AID PROJECT										

**LEGEND**

-  WEED CONTROL OF EXISTING TEASEL AND/OR PHRAGMITES
-  SELECTIVE CLEARING/PRUNING/TREE REMOVAL/AND/OR BASAL TREATMENT
-  TREE PLANTING AREA OR SHRUB PLANTING AREA
-  MOWING (CYCLE) BROADLEAF IN TURF - (NEED CONTROL)
-  SEEDING, CLASS 2A (TOPSOIL, NUTRIENTS, SEED, AND BLANKET)
-  SEEDING, CLASS 4 (SPECIAL) MOWING (SPECIAL) AFTER AREA HAS BEEN CLEARED

BRIDGE



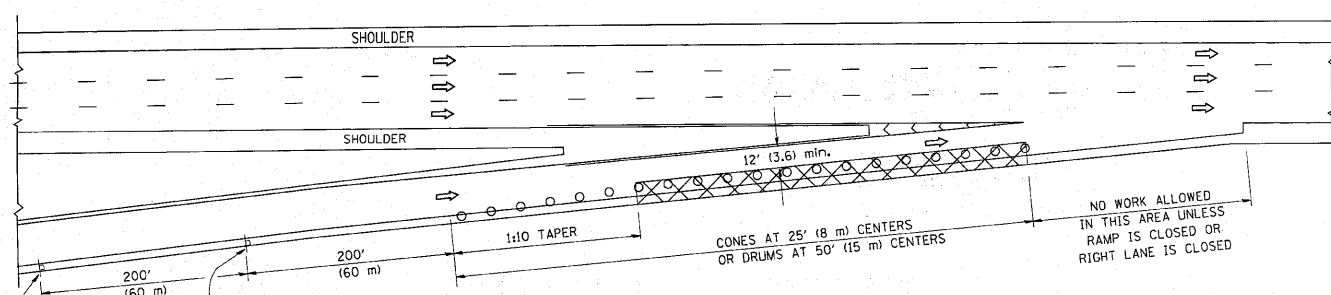
**NOTES**

- VARIOUS WORK WILL BE AT VARIOUS LOCATIONS AT VARIOUS TIME FRAMES AS NEEDED TO ERADICATE UNDESIRABLE WEEDS BECAUSE CERTAIN WEEDS MAY REQUIRE ADDITIONAL SPOT SPRAYING.
- MOW CYCLE SHALL CONSIST OF THE 12' GRASS AREA ALONG THE SHOULDER, THE GRASS MEDIAN, AND THE WIDER MERGE AREAS WHERE SIGHT DISTANCE MAY BE AN ISSUE.
- NOT TO SCALE

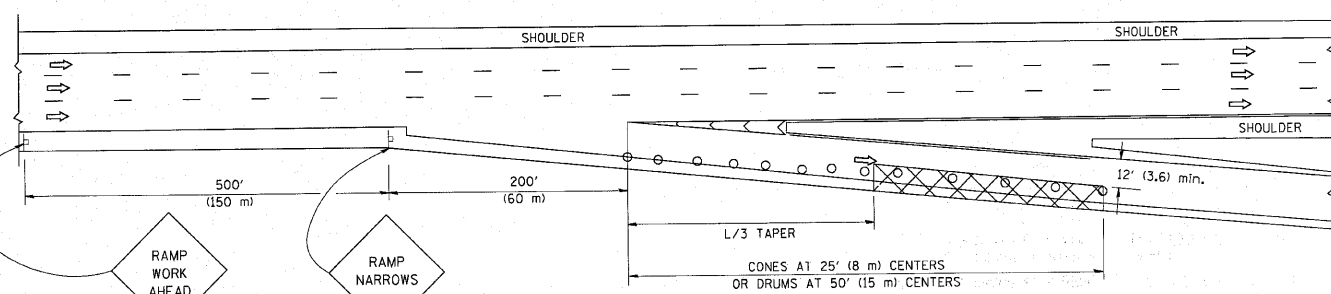
FILE NAME =	USER NAME = delrosarions	DESIGNED -	REVISED -	<b>STATE OF ILLINOIS DEPARTMENT OF TRANSPORTATION</b>	<b>TYPICAL DETAILS</b>	F.A. RTE.	SECTION	COUNTY	TOTAL SHEETS	SHEET NO.
ct:\pwork\pudat\delrosarions\0107469	landscape_ee.dgn	DRAWN -	REVISED -			57	2010-078-LS	COOK	7	6
	PLOT SCALE = 50.0000' / IN.	CHECKED -	REVISED -							
	PLOT DATE = 9/16/2010	DATE -	REVISED -							
						SCALE:	SHEET NO.	OF SHEETS	STA.	TO STA.
						ILLINOIS FED. AID PROJECT				

PARTIAL RAMP CLOSURE DETAILS

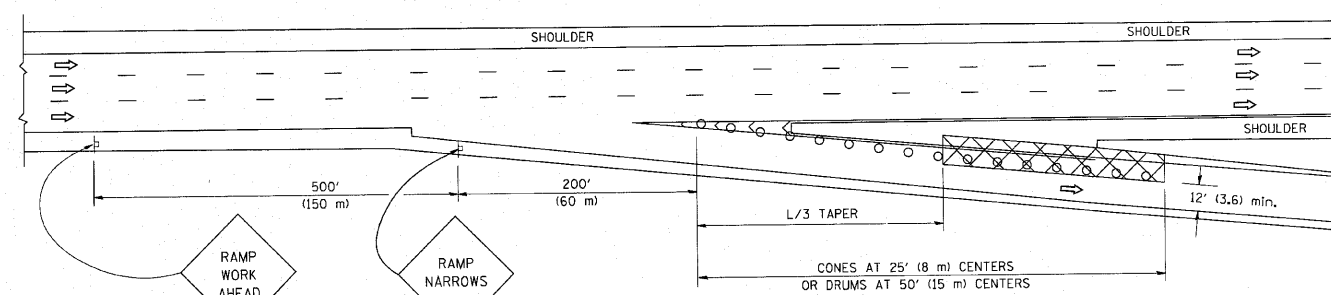
SHOULDER CLOSURE DETAILS



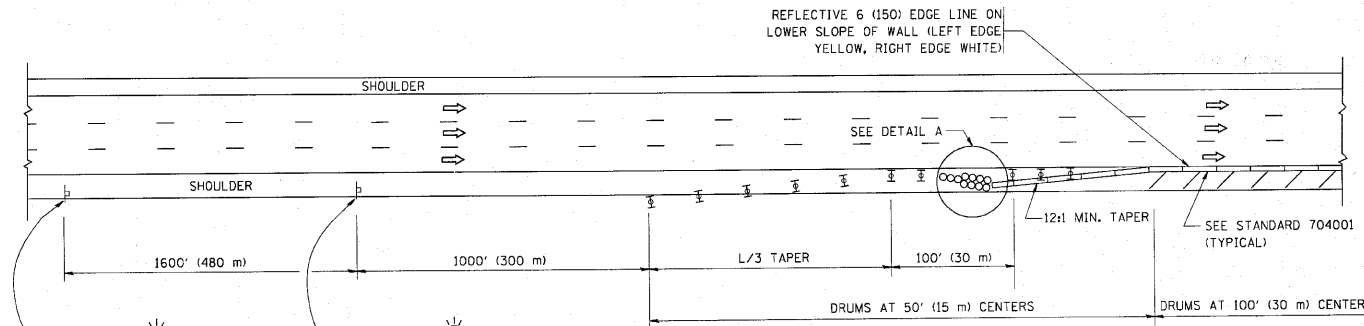
TYPICAL ENTRANCE RAMP



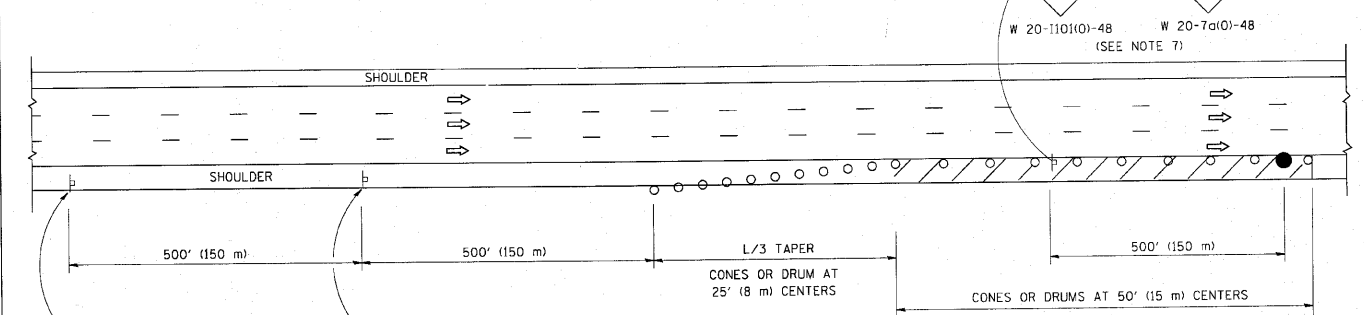
TYPICAL EXIT RAMP



TYPICAL EXIT RAMP

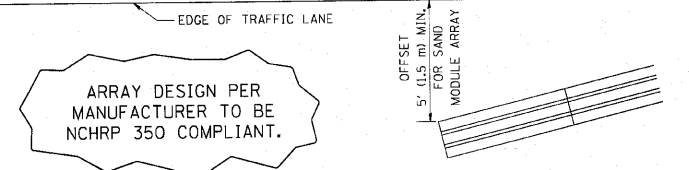


PERMANENT SHOULDER CLOSURE



DAYTIME SHOULDER CLOSURE

THIS DETAIL IS USED WHERE:  
 1. VEHICLES, EQUIPMENT, WORKERS OR THEIR ACTIVITIES ENCROACH IN AN AREA CLOSER THAN 15' (4.5 m) TO THE EDGE OF PAVEMENT FOR A PERIOD IN EXCESS OF 15 MINUTES.



DETAIL "A"  
 IMPACT ATTENUATOR, TEMPORARY  
 (SEE NOTE 5)

SYMBOLS

- ACTIVE WORK AREA
- SIGN ON PORTABLE OR PERMANENT SUPPORT
- FLAGGER WITH CONTROL SIGN
- TYPE II BARRICADE, DRUM OR VERTICAL BARRICADE WITH STEADY BURN MONO-DIRECTIONAL LIGHT
- CONE, DRUM OR BARRICADE

GENERAL NOTES

1. THE "L" DISTANCE EQUALS:  
 SPEED LIMIT FORMULAS  
 45 mph (80 km/h) METRIC ENGLISH  
 OR GREATER:  $L = 0.65(W)(S)$   $L = (W)(S)$   
 W = WIDTH OF OFFSET IN FEET (METERS)  
 S = NORMAL POSTED SPEED MPH (KM/H)
2. PLASTIC DRUMS WITH HIGH PERFORMANCE REFLECTIVE SHEETING AND STEADY BURNING LIGHTS ARE REQUIRED FOR ALL NIGHTTIME CLOSURES.
3. ALL SIGNS SHALL BE POST MOUNTED IF THE CLOSURE TIME EXCEEDS FOUR DAYS.
4. FLASHING LIGHTS SHALL BE USED DURING THE HOURS OF DARKNESS AND SHALL BE INSTALLED ABOVE THE FIRST TWO SETS OF SIGNS.

5. THE IMPACT ATTENUATOR, TEMPORARY IS NOT REQUIRED WHEN THE TEMPORARY CONCRETE BARRIER WALL IS PROTECTED BY OR IS TIED INTO THE EXISTING GUARDRAIL. IF OFFSET IS LESS THAN 5 FEET USE NARROW USE TYPE DEVICE TO MEET NCHRP350.
6. AUTHORIZATION FROM THE DISTRICT'S BUREAU OF TRAFFIC IS REQUIRED FOR ALL FREEWAY CLOSURES.
7. THE FLAGGER AND FLAGGER SIGN ARE REQUIRED AT THE ABOVE WORK SITES WHEN:
  - a. FOUR OR MORE WORK VEHICLES ENTER THE TRAFFIC LANES IN A ONE HOUR PERIOD.
  - b. THE WORK ACTIVITY REQUIRES FREQUENT ENCROACHMENT INTO THE LANE OPEN TO TRAFFIC.
 THE FLAGGER SHALL BE STATIONED APPROXIMATELY 100' (30 m) TO 200' (60 m) IN ADVANCE OF THE WORKERS.

ALL DIMENSIONS ARE IN INCHES (MILLIMETERS) UNLESS OTHERWISE SHOWN.

FILE NAME = W:\d:\statd\22x34\col7.dgn	USER NAME = lsgsa	DESIGNED -	REVISED - 04-03	<b>STATE OF ILLINOIS DEPARTMENT OF TRANSPORTATION</b>	<b>TRAFFIC CONTROL DETAILS FOR FREEWAY SHOULDER CLOSURES AND PARTIAL RAMP CLOSURES</b>		F.A.A. R.T.E. = 57	SECTION = 2010-078-LS	COUNTY = COOK	TOTAL SHEETS = 7	SHEET NO. = 7
	PLOT SCALE = 80,000 / IN.	DRAWN - D.W.S.	REVISED - J.A.F. 12-06		SCALE: NONE	SHEET NO. 1 OF 1 SHEETS	STA. TO STA.	FED. ROAD DIST. NO. 1 ILLINOIS FED. AID PROJECT			
PLOT DATE = 1/26/2010	CHECKED -	REVISED - S.P.B. 01-07	REVISED - S.P.B. 12-09			TC-17		CONTRACT NO. 60L66			