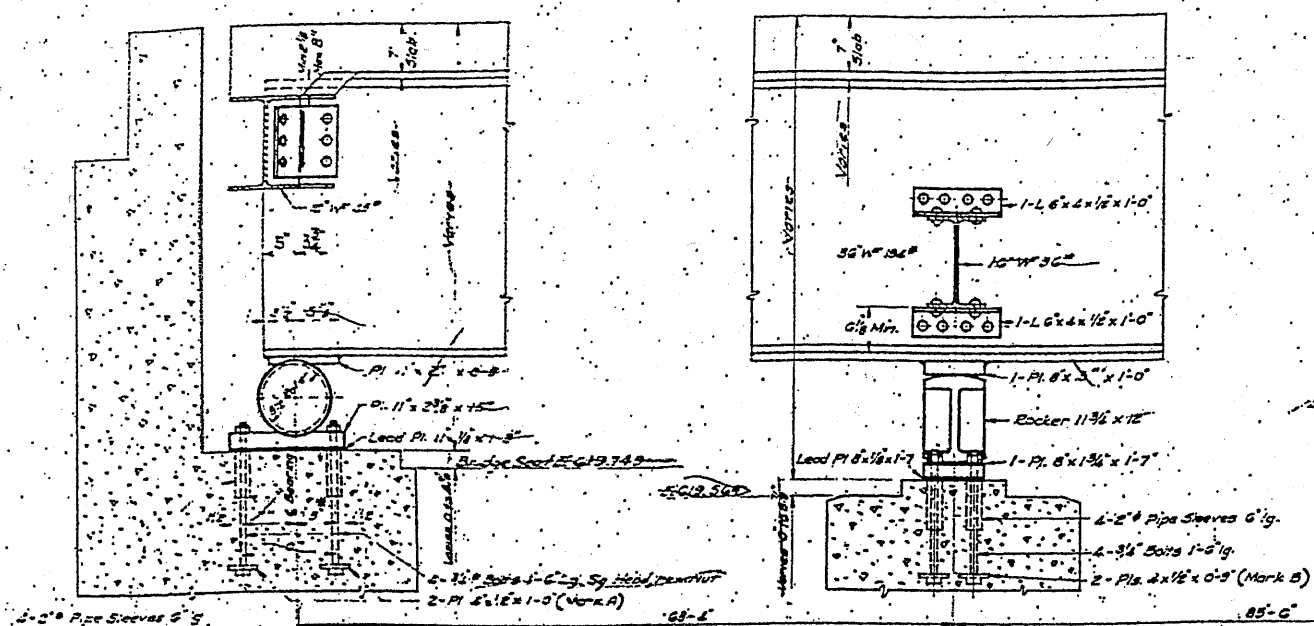
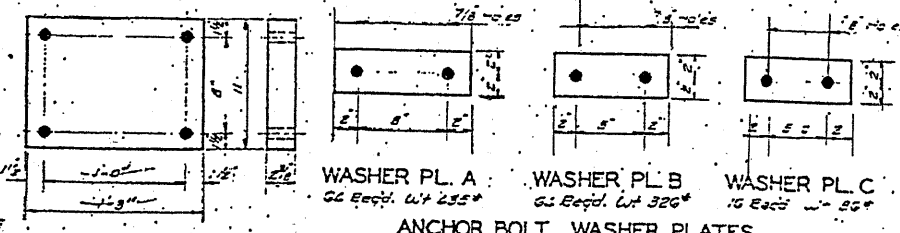
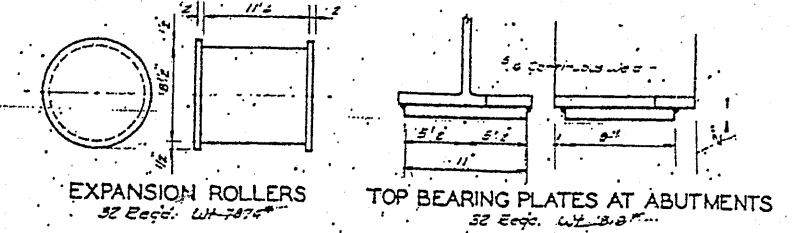
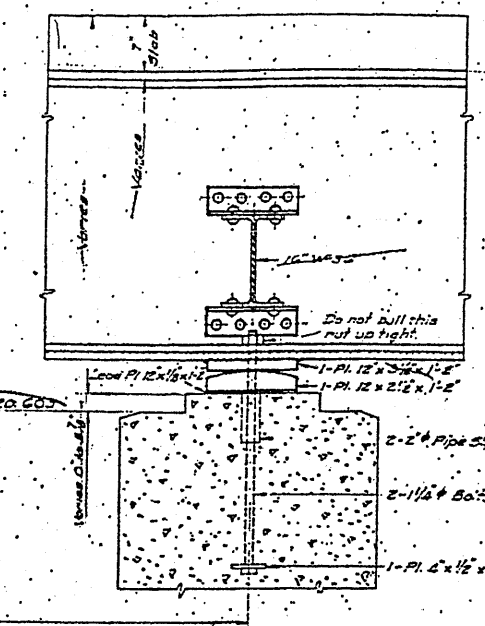


ROUTE FAI 94	SECTION 2010-089-BP	COUNTY COOK	TOTAL SHEETS 35	SHEET NUMBER 11
-----------------	------------------------	----------------	--------------------	--------------------

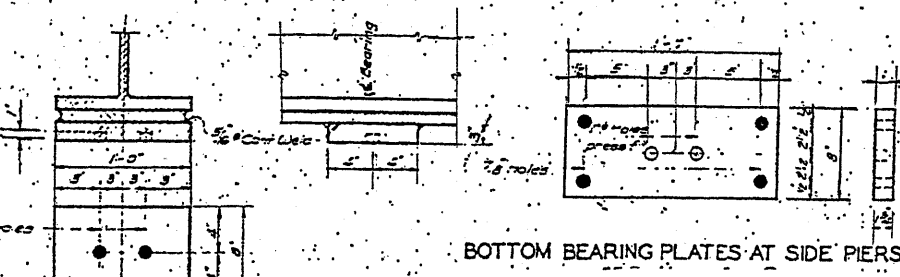
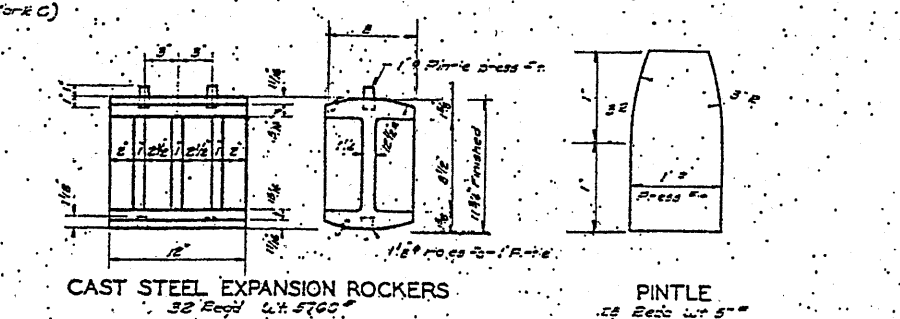
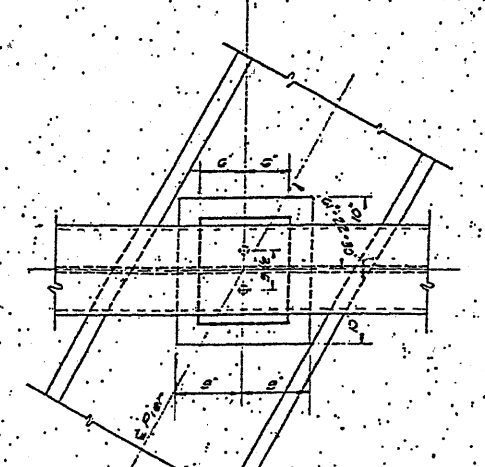
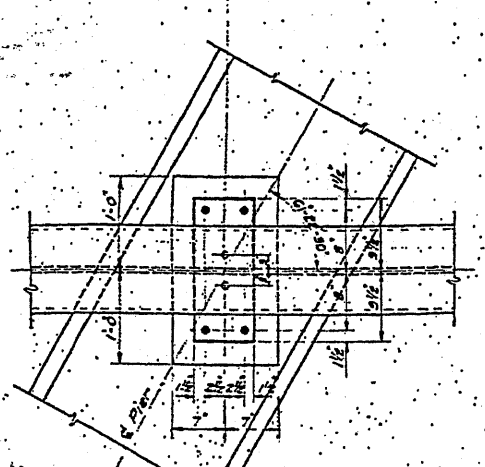
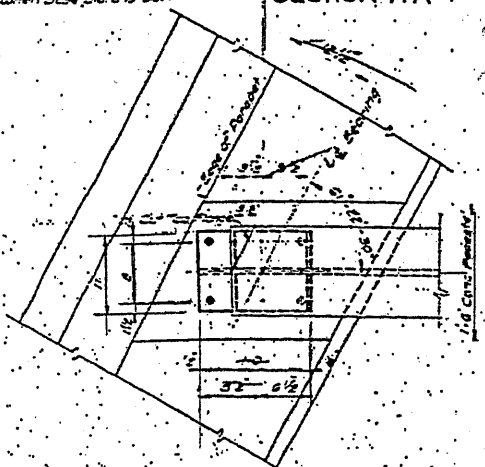
CONTRACT NO. 60L85



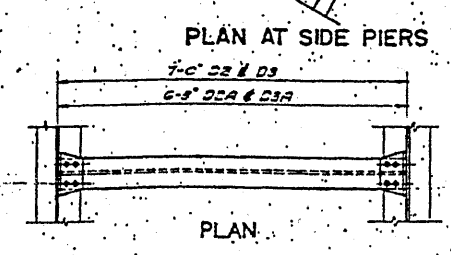
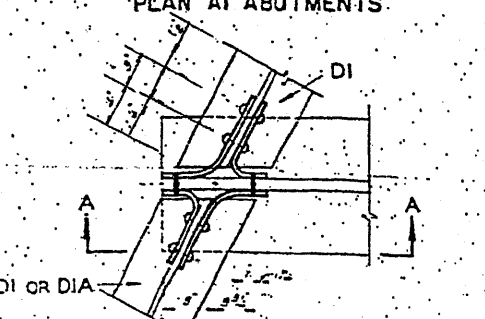
SECTION A-A



BOTTOM BEARING PLATES AT ABUTMENT: 32 Req'd. Wt. 3599

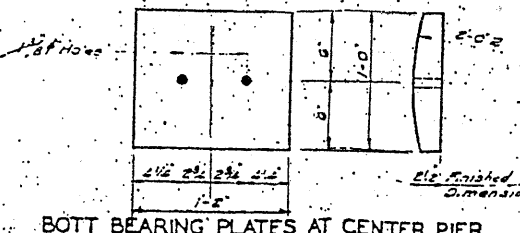
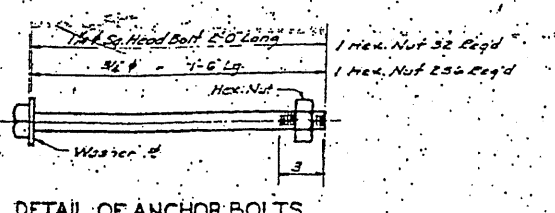
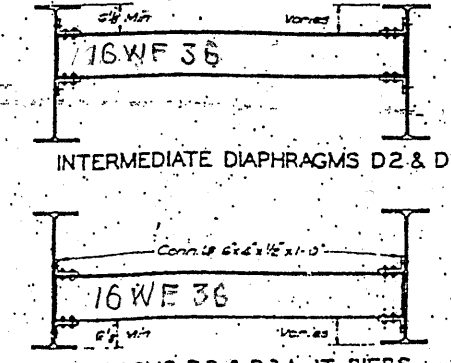
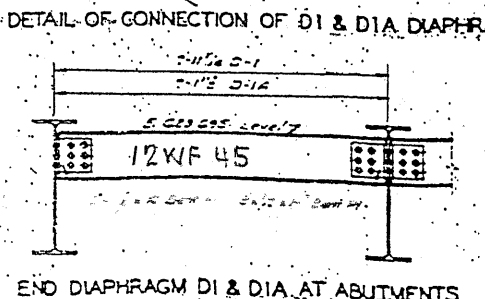
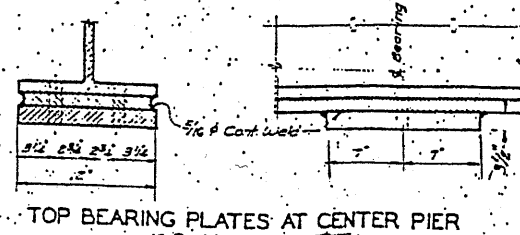


TOP PLATES AT SIDE PIERS: 32 Req'd. Wt. 2666



ITEM	LENGTH	NO. REQ'D	WEIGHT
* 2" Pipe	0'-6"	11,288	526
* 3/4" Bolts	1'-6"	256	648
* 1 1/2" Bolts	2'-0"	32	210
* Lead Pl.	11 1/2" x 17"	32	293
* "	8 1/2" x 17"	32	270
* "	12 1/2" x 17"	16	143

* Included in weight of structural steel on cover sheet



SHEET 4 OF 4

ILLINOIS DEPARTMENT OF TRANSPORTATION
EXISTING BRIDGE PLAN
SN 016-0162 (BRIDGE 1)