

DIST. 1 - DESIGN / CONSULTANT SERVICES PROJECT MANAGER: BRIAN KUTTAB (847) 705-4431

3116&17C0V

F.A.P. RTE.	SECTION	COUNTY	TOTAL SHEETS	SHEET NO.
303	134(B&B-2)R-1	LAKE	137	1

D-91-443-00  
CONTRACT NO. 62037

**Project located  
in THE TOWNSHIP OF ANTIOCH**

**FOR INDEX OF SHEETS, SEE SHEET NO. 2**

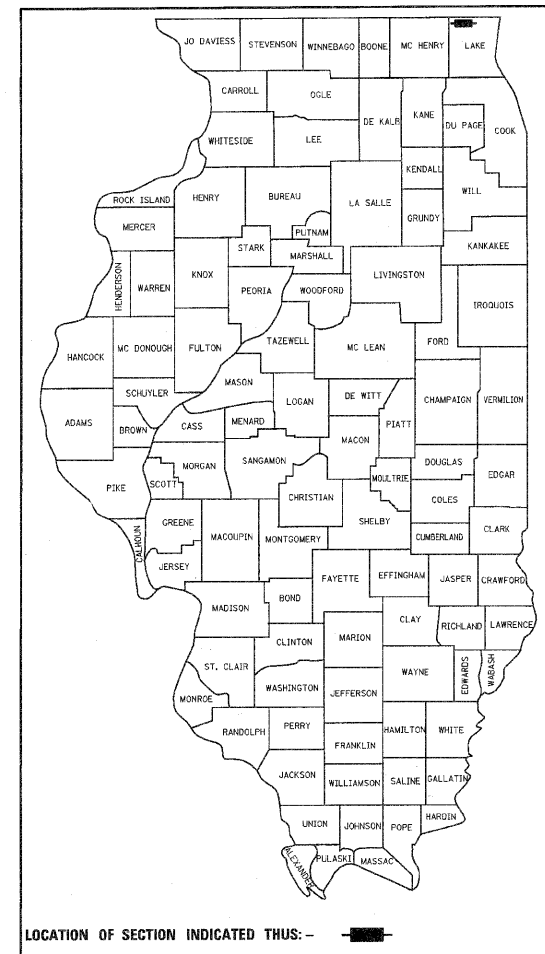
TRAFFIC DATA  
2007 ADT: 12,400 VEHICLES  
2007 ADTT: 1,875  
2027 ADT: 16,700 VEHICLES

POSTED SPEED LIMIT  
65 km/h (40 mph)

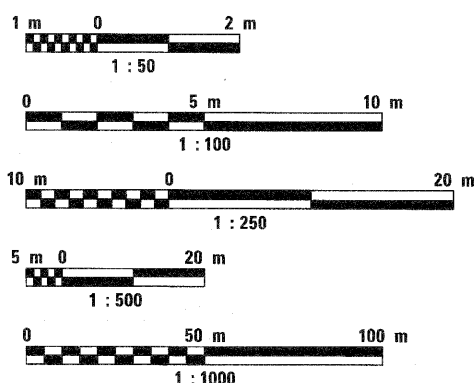
DESIGN DESIGNATION  
17,400(30) PRINCIPAL ARTERIAL  
5.07 (FD-20)

STATE OF ILLINOIS  
DEPARTMENT OF TRANSPORTATION  
DIVISION OF HIGHWAYS  
**PLANS FOR PROPOSED  
HIGHWAY**

**FAP 303 – IL ROUTE 173 OVER BOAT CHANNELS  
(1.8 MI WEST OF IL 59 & 2.5 MI WEST OF IL 59)  
SECTION: 134(B&B-2)R-1  
BRIDGE SUPERSTRUCTURE REPLACEMENT  
AND BRIDGE REPLACEMENT**



**METRIC RATIOS**



FULL SIZE PLANS HAVE BEEN PREPARED USING STANDARD ENGINEERING SCALES. REDUCED SIZED PLANS WILL NOT CONFORM TO STANDARD SCALES. IN MAKING MEASUREMENTS ON REDUCED PLANS, THE ABOVE SCALES MAY BE USED.

J.U.L.I.E.  
JOINT UTILITY LOCATION INFORMATION FOR EXCAVATION  
1-800-892-0123

**CONTRACT NO. 62037**

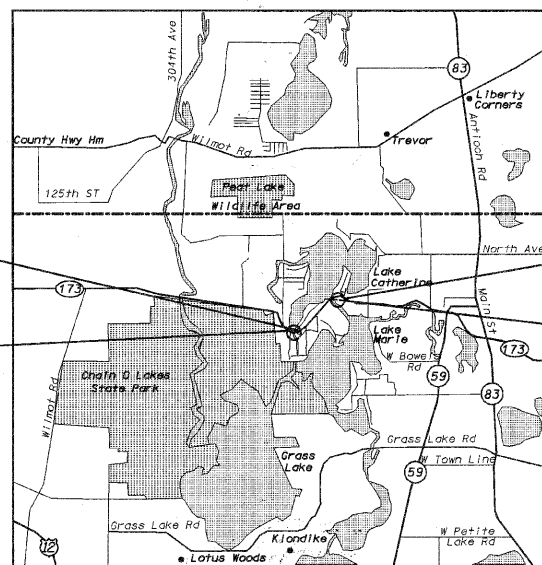
**Project Description**

IL ROUTE 173 OVER WEST BOAT CHANNEL, 2.5 MI WEST OF IL ROUTE 59, BRIDGE SUBSTRUCTURE REPAIR AND SUPERSTRUCTURE REPLACEMENT.  
EXISTING S.N. 049-0055  
EXISTING BRIDGE LENGTH 9.72 M

**Project Ends  
Sta. 25 + 120**

**Project Begins  
Sta. 25 + 077**

**LAKE COUNTY  
C-91-443-00**



**ANTIOCH TOWNSHIP  
LOCATION MAP**

SCALE: 1:60000

WEST BOAT CHANNEL LENGTH OF PROJECT = 43 m = 0.043 km  
EAST BOAT CHANNEL LENGTH OF PROJECT = 304 m = 0.304 km  
GROSS LENGTH OF PROJECT = 347 m = 0.347 km  
NET LENGTH OF PROJECT = 347 m = 0.347 km



**Project Description**

IL ROUTE 173 OVER EAST BOAT CHANNEL, 1.8 MI WEST OF IL ROUTE 59, BRIDGE SUBSTRUCTURE AND SUPERSTRUCTURE REPLACEMENT.  
EXISTING S.N. 049-0056  
PROPOSED S.N. 049-0198  
EXISTING BRIDGE LENGTH 29.58 M  
PROPOSED BRIDGE LENGTH 43.55 M

**Project Ends  
Sta. 26 + 400**

**Project Begins  
Sta. 26 + 096**

STATE OF ILLINOIS  
DEPARTMENT OF TRANSPORTATION  
DIVISION OF HIGHWAYS

SUBMITTED JUNE 10, 2010  
Diana M. O'Hara  
DEPUTY DIRECTOR OF HIGHWAY, REGION ONE ENGINEER

October 1, 2010  
Scott E. Stitt P.E.  
Acting ENGINEER OF DESIGN AND ENVIRONMENT

October 1, 2010  
Christine M. Reedler  
DIRECTOR, DIVISION OF HIGHWAYS

**PRINTED BY THE AUTHORITY  
OF THE STATE OF ILLINOIS**



SEAL

**Applied Technologies**  
CONSULTING ENGINEERS  
468 PARK AVENUE  
LAKE VILLA, ILLINOIS 60046  
PHONE: 847 265-7325, EXT 101  
FAX: 847-265-7327