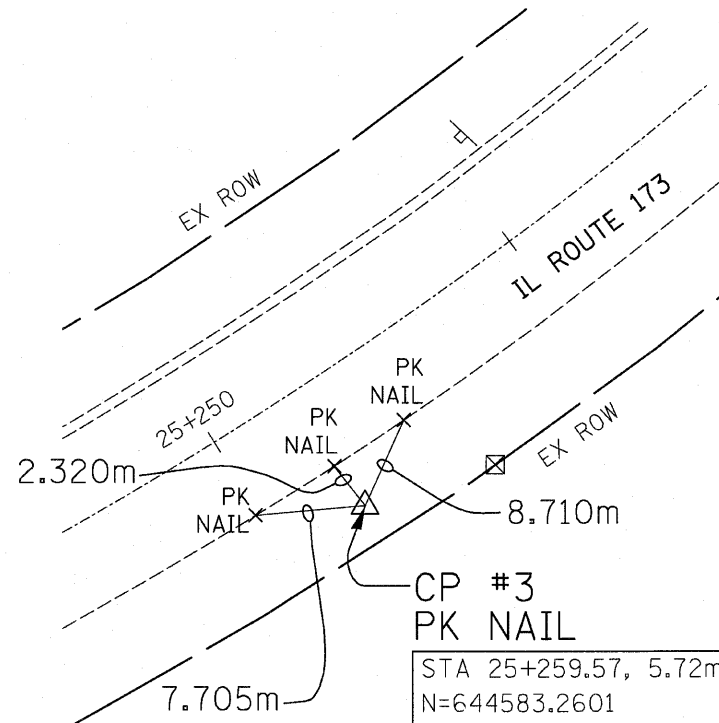


F.A.P. RTE.	SECTION	COUNTY	TOTAL SHEETS	SHEET NO.
303	134(B&B-2)R-1	LAKE	137	21
STA.		TO STA.		
FED. ROAD DIST. NO.		ILLINOIS FED. AID PROJECT		
CONTRACT NO. 62037				



PC STA. 24+702.249
 N 644739.415
 E 315019.437

CURVE
 PI STA= 25+213.849
 N 644258.040
 E 315192.681
 $\Delta = 117^\circ 58' 50.836''$ (LT)
 R= 307.515 m
 T= 511.600 m
 L= 633.221 m
 E= 289.394
 e= 8.3%
 TR= 10 m
 SE RUN= 55 m
 PC STA= 24+702.249
 PT STA= 25+335.470



CP #3
 PK NAIL
 STA 25+259.57, 5.72m RT
 N=644583.2601
 E=315483.0598
 EL=229.434

N 42° 13' 31" E
 842.998 m
 PT 25+335.470
 N 644636.884
 E 315536.501

BENCHMARK:

- BM1 STA. 25+095.13, 8.916m RT, A USGS REFERENCE MARK SET IN SOUTHWEST WINGWALL OF IL ROUTE 173 BRIDGE SN 049-0055 OVER WEST BOAT CHANNEL. EL. 228.867
- BM2 STA. 25+355.4, 9.76m RT, CUT SQUARE ON THE CURB SOUTH OF SOUTH LINE OF IL ROUTE 173, FRONT OF TOPPERS PLACE. EL. 231.491

REVISIONS	
NAME	DATE

ILLINOIS DEPARTMENT OF TRANSPORTATION
 IL ROUTE 173 OVER WEST BOAT CHANNEL
ALIGNMENT, TIES & BENCHMARKS
 SCALE: NTS
 DRAWN BY CLG
 CHECKED BY JJD
 DATE: 3-8-10



3117TIE.DGN