

F.A.P. RTE.	SECTION	COUNTY	TOTAL SHEETS	SHEET NO.
303	134(B&B-2)R-1	LAKE	137	22
STA.		TO STA.		
FED. ROAD DIST. NO.		ILLINOIS	FED. AID PROJECT	
CONTRACT NO. 62037				

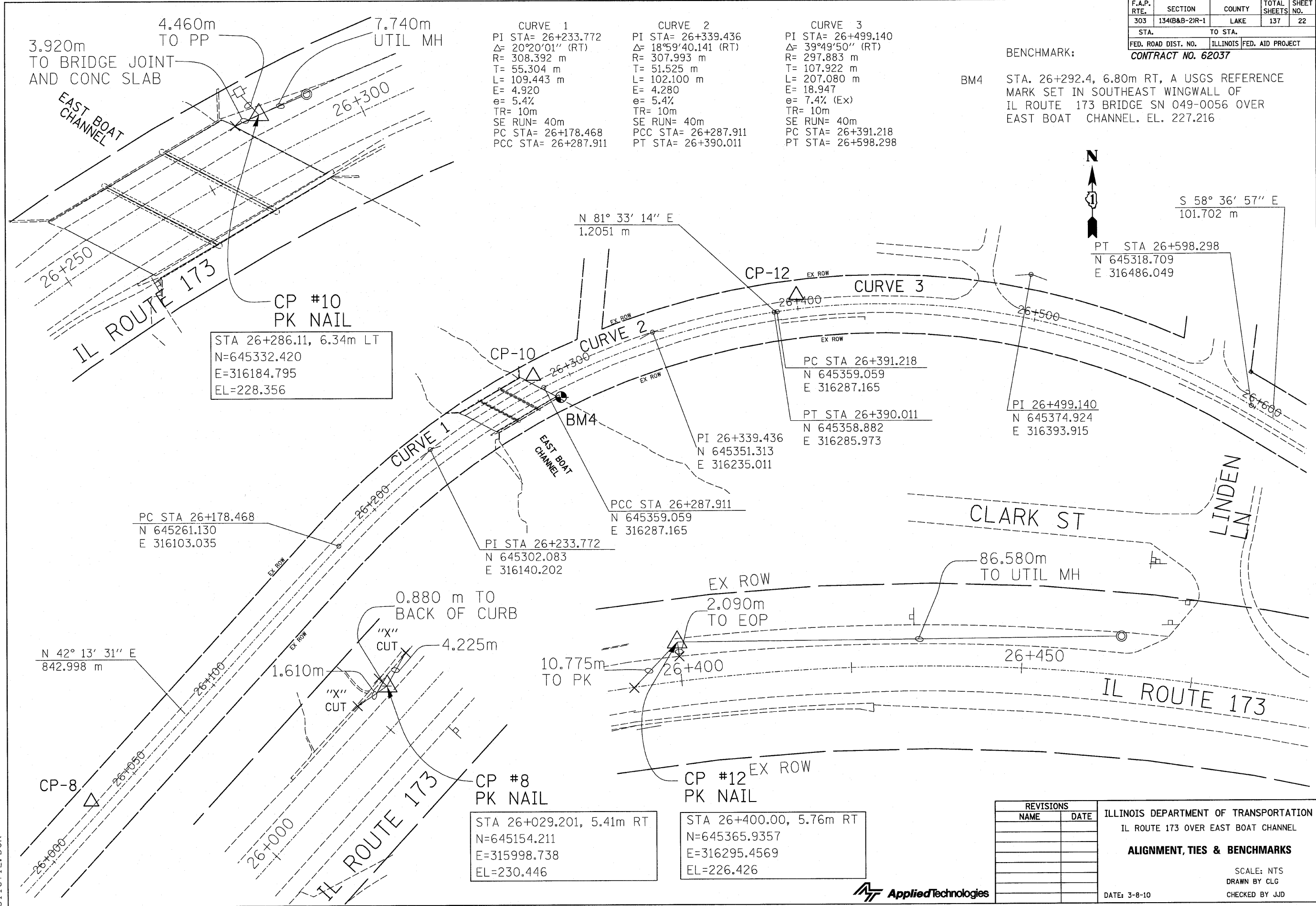
CURVE 1
 PI STA= 26+233.772
 $\Delta= 20^{\circ}20'01''$ (RT)
 R= 308.392 m
 T= 55.304 m
 L= 109.443 m
 E= 4.920
 e= 5.4%
 TR= 10m
 SE RUN= 40m
 PC STA= 26+178.468
 PCC STA= 26+287.911

CURVE 2
 PI STA= 26+339.436
 $\Delta= 18^{\circ}59'40.141''$ (RT)
 R= 307.993 m
 T= 51.525 m
 L= 102.100 m
 E= 4.280
 e= 5.4%
 TR= 10m
 SE RUN= 40m
 PCC STA= 26+287.911
 PT STA= 26+390.011

CURVE 3
 PI STA= 26+499.140
 $\Delta= 39^{\circ}49'50''$ (RT)
 R= 297.883 m
 T= 107.922 m
 L= 207.080 m
 E= 18.947
 e= 7.4% (Ex)
 TR= 10m
 SE RUN= 40m
 PC STA= 26+391.218
 PT STA= 26+598.298

BENCHMARK:
 BM4 STA. 26+292.4, 6.80m RT, A USGS REFERENCE MARK SET IN SOUTHEAST WINGWALL OF IL ROUTE 173 BRIDGE SN 049-0056 OVER EAST BOAT CHANNEL. EL. 227.216

N
 S 58° 36' 57" E
 101.702 m
 PT STA 26+598.298
 N 645318.709
 E 316486.049



CP #10
 PK NAIL
 STA 26+286.11, 6.34m LT
 N=645332.420
 E=316184.795
 EL=228.356

PC STA 26+178.468
 N 645261.130
 E 316103.035

PI STA 26+233.772
 N 645302.083
 E 316140.202

PCC STA 26+287.911
 N 645359.059
 E 316287.165

PI 26+339.436
 N 645351.313
 E 316235.011

PC STA 26+391.218
 N 645359.059
 E 316287.165

PT STA 26+390.011
 N 645358.882
 E 316285.973

PI 26+499.140
 N 645374.924
 E 316393.915

N 42° 13' 31" E
 842.998 m

CP #8
 PK NAIL
 STA 26+029.201, 5.41m RT
 N=645154.211
 E=315998.738
 EL=230.446

CP #12
 PK NAIL
 STA 26+400.00, 5.76m RT
 N=645365.9357
 E=316295.4569
 EL=226.426

REVISIONS	
NAME	DATE

ILLINOIS DEPARTMENT OF TRANSPORTATION
 IL ROUTE 173 OVER EAST BOAT CHANNEL
ALIGNMENT, TIES & BENCHMARKS
 SCALE: NTS
 DRAWN BY CLG
 CHECKED BY JJD
 DATE: 3-8-10



3116TIE.DGN