




MAJOR WORK STAGE III:

1. LEVELING BINDER AND HOT-MIX ASPHALT SURFACE COURSE TO BE COMPLETED BY STAGES. IL ROUTE 173 AND CIRCLE DRIVE SHALL REMAIN OPEN.

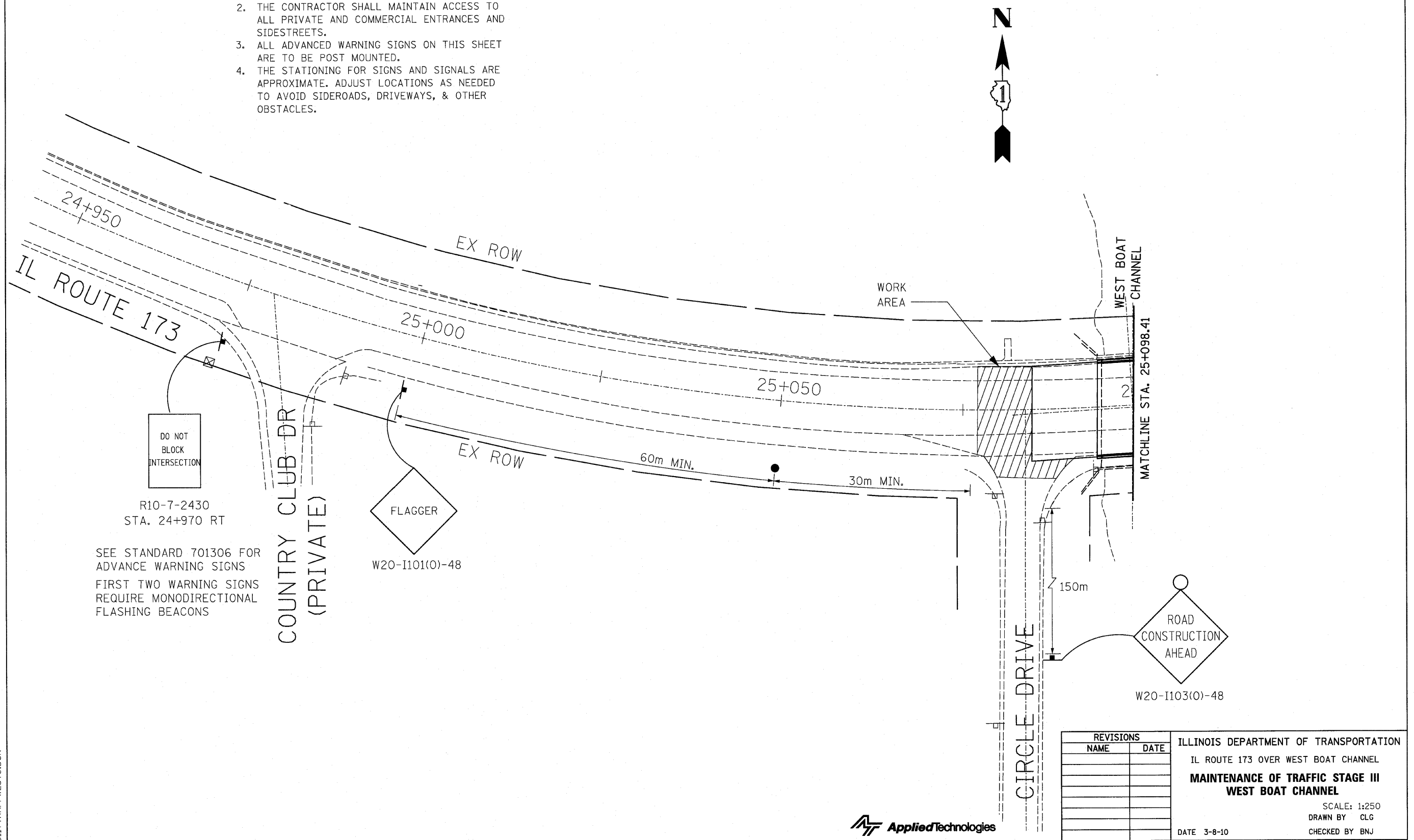
NOTES:

1. LOCATIONS OF ADVANCED WARNING SIGNS FOR STAGE III WORK SHALL BE AS SHOWN ON THIS PLAN SHEET. ALL OTHER TRAFFIC CONTROL DEVICES FOR THIS WORK SHALL BE IN ACCORDANCE WITH HIGHWAY STANDARD 701306. WORK SHALL NOT BEGIN UNTIL ALL TRAFFIC CONTROL DEVICES ARE IN PLACE AND APPROVED BY THE ENGINEER.
2. THE CONTRACTOR SHALL MAINTAIN ACCESS TO ALL PRIVATE AND COMMERCIAL ENTRANCES AND SIDESTREETS.
3. ALL ADVANCED WARNING SIGNS ON THIS SHEET ARE TO BE POST MOUNTED.
4. THE STATIONING FOR SIGNS AND SIGNALS ARE APPROXIMATE. ADJUST LOCATIONS AS NEEDED TO AVOID SIDEROADS, DRIVEWAYS, & OTHER OBSTACLES.

SYMBOLS

-  WORK AREA
-  SIGN
-  FLAGGER WITH TRAFFIC CONTROL SIGN

F.A.P. RTE.	SECTION	COUNTY	TOTAL SHEETS	SHEET NO.
303	134(B&B-2)R-1	LAKE	137	27
STA. 25+000 TO STA. 25+098				
FED. ROAD DIST. NO. 1 ILLINOIS FED. AID PROJECT				
CONTRACT NO. 62037				



SEE STANDARD 701306 FOR ADVANCE WARNING SIGNS
FIRST TWO WARNING SIGNS REQUIRE MONODIRECTIONAL FLASHING BEACONS

REVISIONS		ILLINOIS DEPARTMENT OF TRANSPORTATION IL ROUTE 173 OVER WEST BOAT CHANNEL MAINTENANCE OF TRAFFIC STAGE III WEST BOAT CHANNEL
NAME	DATE	

SCALE: 1:250
DRAWN BY CLG
CHECKED BY BNJ

DATE 3-8-10



3117TRAFFWEST3.DGN