




**LEGEND**

-  AREA TREE REMOVAL
-  TREE REMOVAL
-  WATERS OF THE UNITED STATES TEMPORARY IMPACT AREA

PI STA= 25+213.849  
 $\Delta = 117^{\circ}58'51''$  (LT)  
 R= 307.515 m  
 T= 511.600 m  
 L= 633.221 m  
 E= 289.394 m  
 $e = 8.30\%$   
 T.R. = 10m  
 S.E. RUN = 55m  
 P.C. STA= 24+702.249  
 P.T. STA= 25+335.470

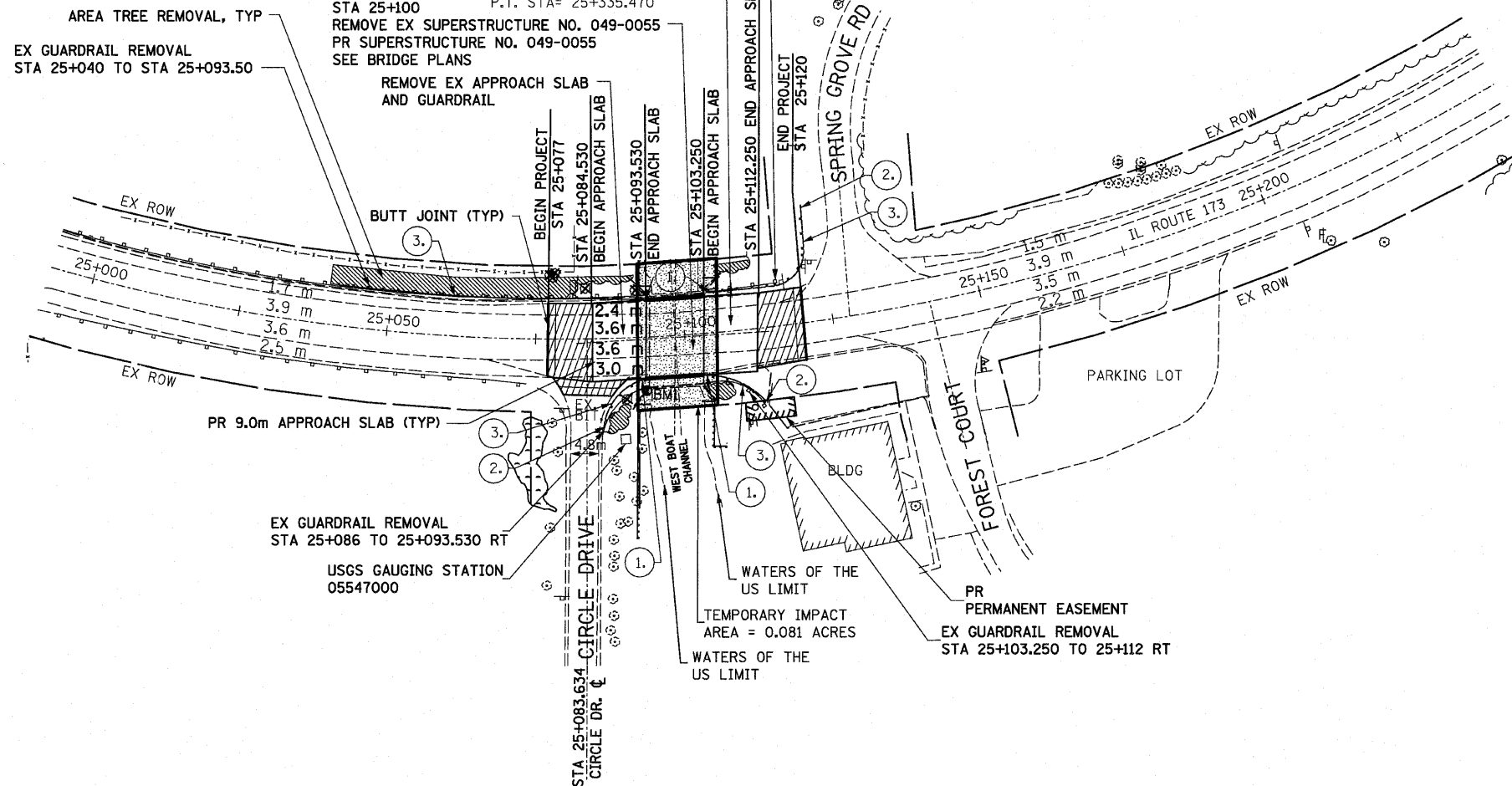
**BENCHMARK:**

BM1 STA 25+095.13, 8.916m RT, A USGS REFERENCE MARK SET IN SOUTHWEST WINGWALL OF IL ROUTE 173 BRIDGE S.N. 049-0055 OVER WEST BOAT CHANNEL. EL. 228.867

BM2 STA 25+355.4, 9.76m RT, CUT SQUARE ON THE CURB SOUTH OF SOUTH LINE OF IL ROUTE 173, FRONT OF TOPPERS PLACE. EL. 231.491

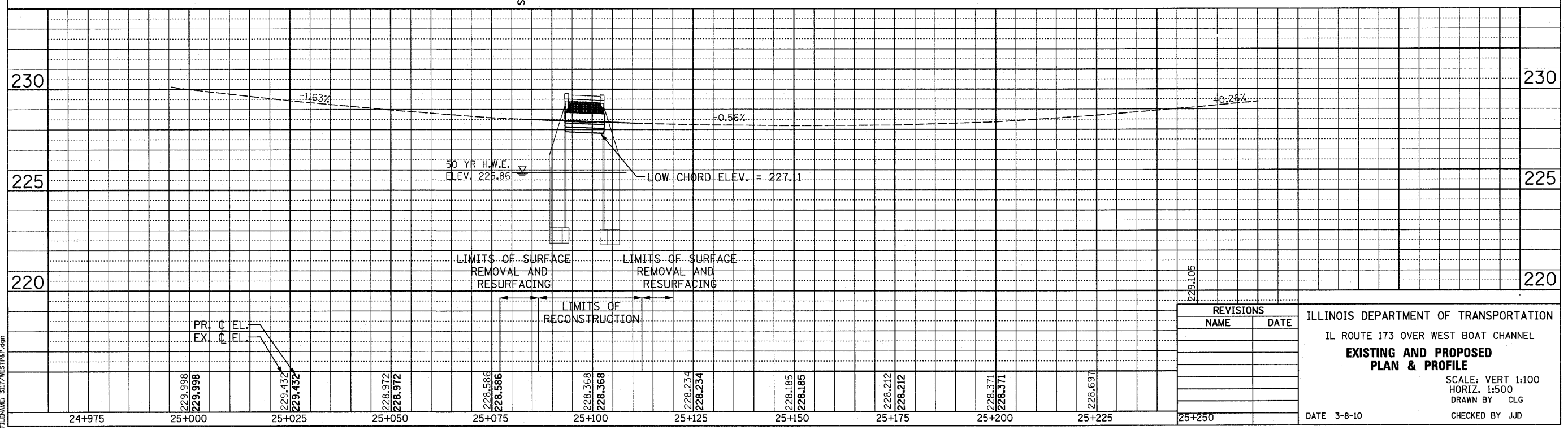
F.A.P. RTE.	SECTION	COUNTY	TOTAL SHEETS	SHEET NO.
303	134(B&B-2R-1	LAKE	137	45
STA. 25+000		TO STA. 25+250		
FED. ROAD DIST. NO.	ILLINOIS	FED. AID PROJECT		

**CONTRACT NO. 62037**



1. PR TRAFFIC BARRIER TERMINAL, TYPE 6 STA 25+093.530 RT, STA 25+103.250 RT, STA 25+093.530 LT AND STA 25+103.250 LT
  2. PR TRAFFIC BARRIER TERMINAL, TYPE I SPECIAL (TANGENT) STA 25+113 RT, STA 25+086, 15.0 RT AND STA 25+120, 23.0 LT
  3. PR STEEL PLATE BEAM GUARDRAIL, TYPE B STA 25+040 TO STA 25+093.50 LT, STA 25+086 TO STA 25+093.50 RT, STA 25+103.250 TO STA 25+120 LT, STA 25+103.250 TO STA 25+112 RT
- PR HOT-MIX ASPHALT SURFACE REMOVAL 65mm STA 25+077 TO 25+084.530  
 STA 25+112.250 TO 25+120  
 SIDEROAD APPROACH (3m WIDE)  
 PR LEVELING BINDER (MACHINE METHOD), N70 19mm  
 PR POLYMERIZED HOT-MIX ASPHALT SURFACE COURSE, MIX F, N90 45mm

EDGE OF PAVEMENT TAPERS		
STA 25+077	BEGIN TAPER	6.0m RT
STA 25+084.530	END TAPER	6.6m RT
STA 25+112.250	BEGIN TAPER	6.6m RT
STA 25+120	END TAPER	6.1m RT



REVISIONS	
NAME	DATE

ILLINOIS DEPARTMENT OF TRANSPORTATION  
 IL ROUTE 173 OVER WEST BOAT CHANNEL  
**EXISTING AND PROPOSED  
 PLAN & PROFILE**

SCALE: VERT 1:100  
 HORIZ. 1:500  
 DRAWN BY CLG  
 DATE 3-8-10  
 CHECKED BY JJD

FILENAME: 3117/WESTP&P.dgn