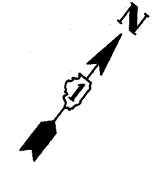


F.A.P. RTE.	SECTION	COUNTY	TOTAL SHEETS	SHEET NO.
303	134(B&B-2)R-1	LAKE	137	46
STA. 26+096 TO STA. 26+400				
FED. ROAD DIST. NO.		ILLINOIS	FED. AID PROJECT	

CONTRACT NO. 62037



BENCHMARK:
 BM2 STA 25+335.4, 9.76m RT, CUT SQUARE ON THE CURB SOUTH OF SOUTH LINE OF IL RTE 173, FRONT OF TOPPERS PLACE, EL 231.491
 BM3 STA 25+597.7, 7.8m LT, CUT SQUARE ON THE EAST SIDE OF CONCRETE BASE OF ROY'S AUTO SERVICE PHILLIP'S 76 SIGN, EL 231.915
 BM4 STA 26+292.4, 6.8m RT A USGS REFERENCE MARK SET IN SOUTHEAST WINGWALL OF IL ROUTE 173 BRIDGE S.N. 049-0056 OVER EAST BOAT CHANNEL, EL 227.216

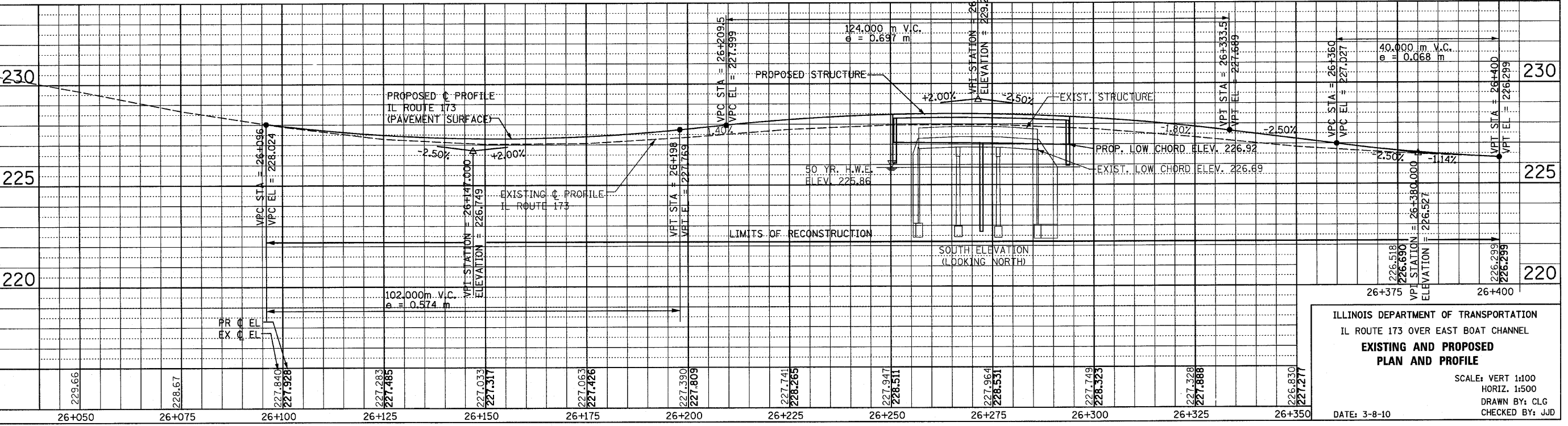
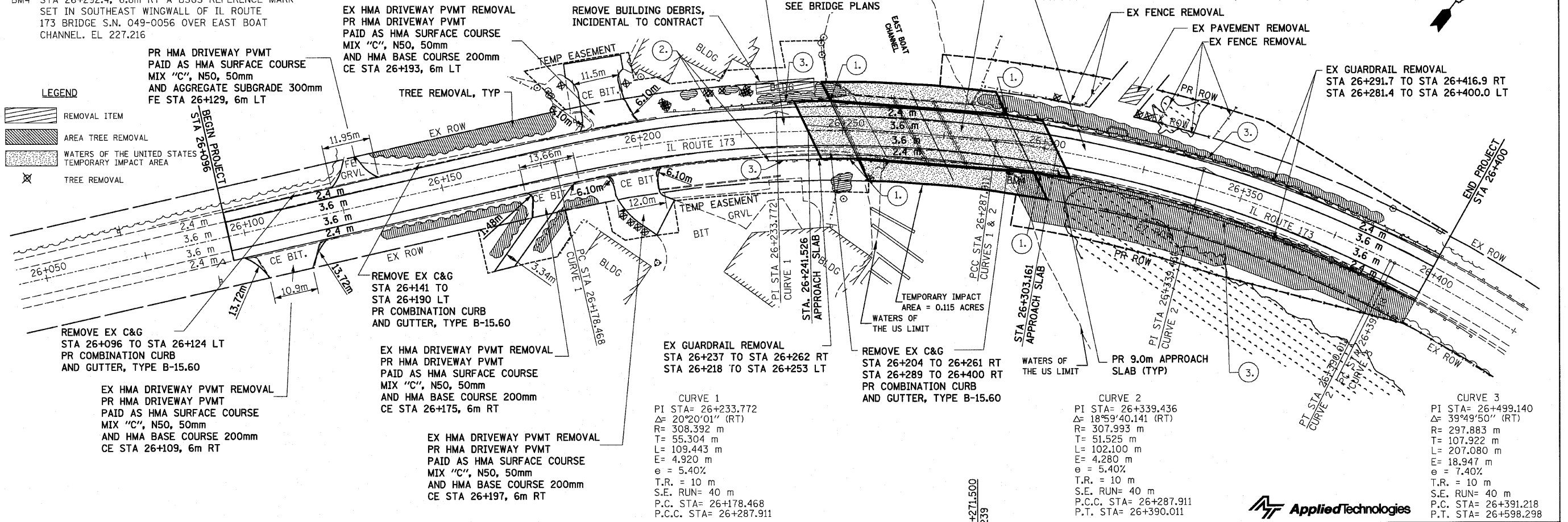
- PR TRAFFIC BARRIER TERMINAL, TYPE 6
STA 26+254.2 RT, STA 26+246.9 LT, STA 26+298.4 RT AND 26+289.8 LT
- PR TRAFFIC BARRIER TERMINAL, TYPE 1 SPECIAL (TANGENT)
STA 26+231.0 RT AND 26+218.6 LT
- PR STEEL PLATE BEAM GUARDRAIL, TYPE B
STA 26+231.0 TO STA 26+254.2 RT, STA 26+218.6 TO STA 26+246.9 LT, STA 26+298.4 TO STA 26+400 RT, AND STA 26+289.8 TO STA 26+400 LT

REMOVE EXISTING PAVEMENT INCLUDING SHOULDERS AND GUARDRAIL, REGRADE AND RECONSTRUCT PROPOSED HOT-MIX ASPHALT PAVEMENT (FULL DEPTH), 320mm INCLUDING PR POLYMERIZED HOT-MIX ASPHALT SURFACE COURSE, MIX F, N90, 50mm PR HOT-MIX ASPHALT BINDER COURSE, IL-19.0, N70, 270mm

REMOVE EX STRUCTURE NO. 049-0056 PR STRUCTURE NO. 049-0198 STA 26+250.526 TO STA 26+294.164 SEE BRIDGE PLANS

REMOVE EXISTING PAVEMENT INCLUDING SHOULDERS AND GUARDRAIL, REGRADE AND RECONSTRUCT PROPOSED HOT-MIX ASPHALT PAVEMENT (FULL DEPTH), 320mm INCLUDING PR POLYMERIZED HOT-MIX ASPHALT SURFACE COURSE, MIX F, N90, 50mm PR HOT-MIX ASPHALT BINDER COURSE, IL-19.0, N70, 270mm

LEGEND
 [Hatched Box] REMOVAL ITEM
 [Dotted Box] AREA TREE REMOVAL
 [Stippled Box] WATERS OF THE UNITED STATES TEMPORARY IMPACT AREA
 [Cross-hatched Box] TREE REMOVAL



ILLINOIS DEPARTMENT OF TRANSPORTATION
 IL ROUTE 173 OVER EAST BOAT CHANNEL
**EXISTING AND PROPOSED
 PLAN AND PROFILE**
 SCALE: VERT 1:100
 HORIZ. 1:500
 DRAWN BY: CLG
 CHECKED BY: JJD
 DATE: 3-8-10

