

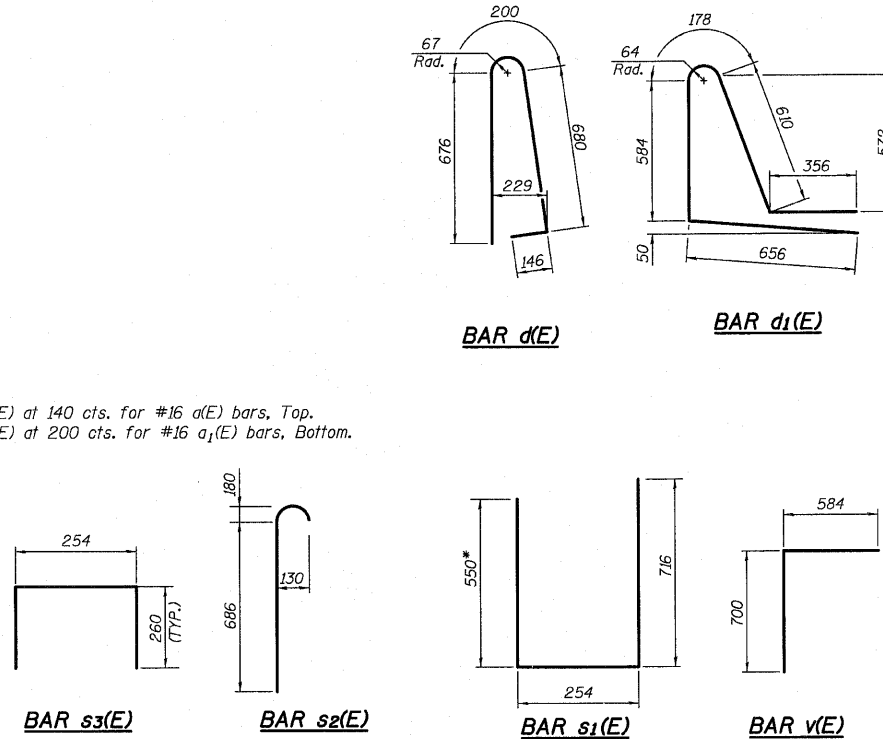
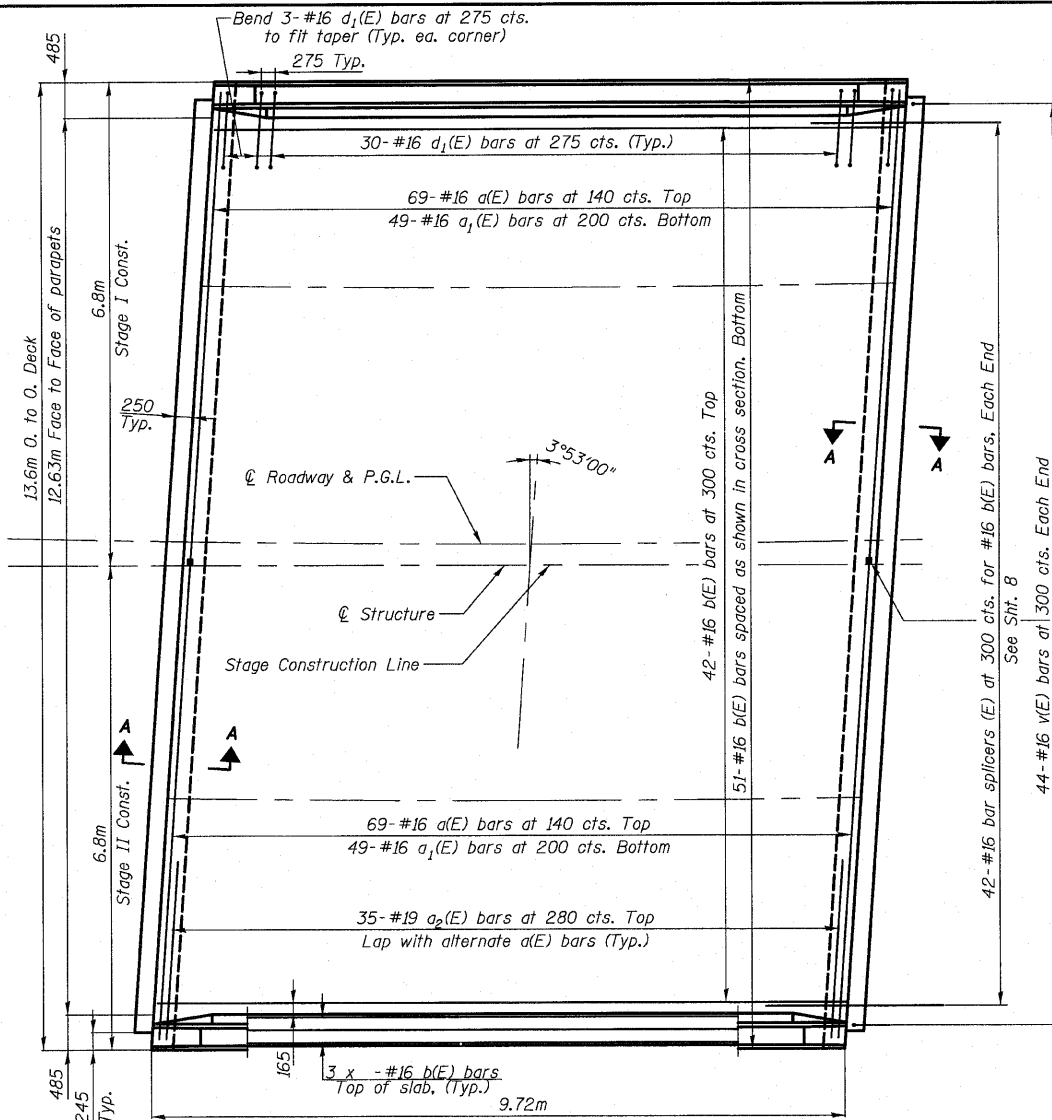
STATE OF ILLINOIS
DEPARTMENT OF TRANSPORTATION

| | | | | |
|-----------------------|---------------|------------------|--------------|-----------|
| ROUTE NO. | SECTION | COUNTY | TOTAL SHEETS | SHEET NO. |
| FAP 303 IL. 173 | 134(B&B-2)R-1 | LAKE | 137 | 78 |
| FED. ROAD DIST. NO. 7 | ILLINOIS | FED. AID PROJECT | | |

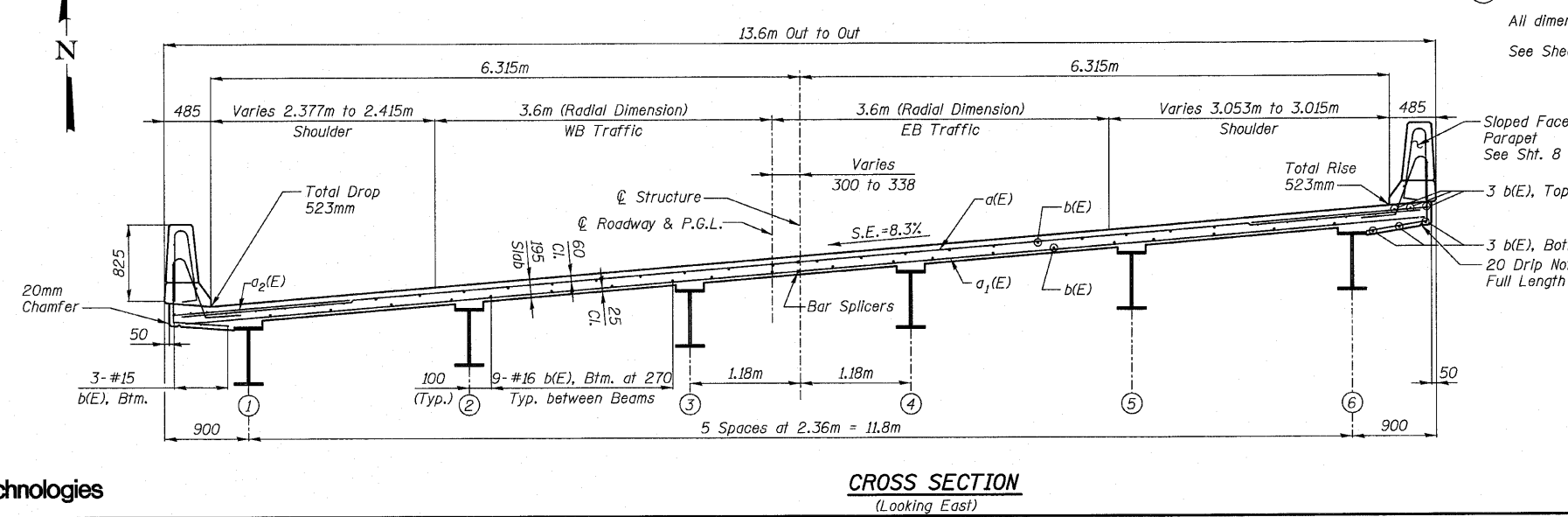
SHEET NO. 7
17 SHEETS

**SUPERSTRUCTURE
BILL OF MATERIAL**

| Bar | No. | Size | Length(m) | Shape |
|--------------------|-----|----------------|-----------|-------|
| a(E) | 138 | #16 | 6.685 | — |
| a ₁ (E) | 98 | #16 | 6.421 | — |
| a ₂ (E) | 70 | #19 | 2.000 | — |
| b(E) | 99 | #16 | 9.640 | — |
| d(E) | 72 | #16 | 1.702 | — |
| d ₁ (E) | 72 | #16 | 2.384 | — |
| e(E) | 28 | #16 | 4.770 | — |
| e ₁ (E) | 2 | #25 | 9.640 | — |
| e ₂ (E) | 2 | #16 | 9.640 | — |
| m(E) | 24 | #16 | 3.270 | — |
| m ₁ (E) | 4 | #16 | 6.732 | — |
| m ₂ (E) | 2 | #16 | 1.970 | — |
| m ₃ (E) | 2 | #16 | 4.330 | — |
| m ₄ (E) | 4 | #16 | 4.670 | — |
| m ₅ (E) | 4 | #16 | 2.260 | — |
| m ₆ (E) | 2 | #16 | 4.390 | — |
| m ₇ (E) | 2 | #16 | 2.030 | — |
| s ₁ (E) | 92 | #16 | 1.520 | — |
| s ₂ (E) | 92 | #16 | 0.866 | — |
| s ₃ (E) | 92 | #16 | 0.774 | — |
| v(E) | 88 | #16 | 1.284 | — |
| Reinforcement Bars | | kg | 5850 | |
| Epoxy Coated | | | | |
| Concrete | | m ³ | 39 | |
| Superstructure | | | | |



*field trim bar to maintain
clr at approach seat



NOTES

- Bars designated (E) shall be epoxy coated.
- See Sheet No. 8 for Superstructure Details.
- See Sheet No. 8 for parapet reinforcement.
- For Section A-A, See Sheet No. 8.
- Indicates Girder Number.
- All dimensions are in millimeters (mm) except as noted.
- See Sheet No. 16 for Bar Splicer Details.

MINIMUM BAR LAP

- #16 bar = 470
- #19 bar = 610
- #25 bar = 1.010m

DECK PLAN AND CROSS SECTION
FAP 303 IL. ROUTE 173
OVER WEST BOAT CHANNEL
SECTION 134(B&B-2)R-1
LAKE COUNTY
STATION 25+098.390
STRUCTURE NO. 049-0055

NOTES

- See Sheet No. 16 for Bar Splicer Details.
- Place Transverse Bars Parallel to Skew.

| | |
|----------|---------|
| DESIGNED | PAT2 |
| CHECKED | RCJ/JRF |
| DRAWN | RDS |
| CHECKED | PAT2 |

