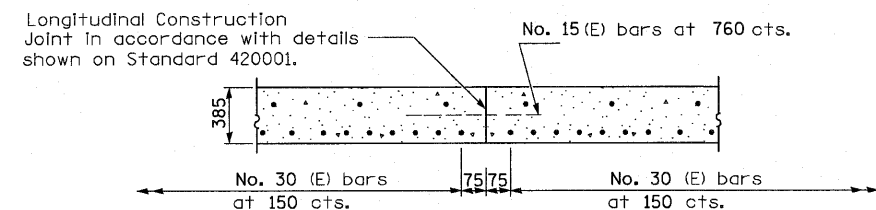


STATE OF ILLINOIS
DEPARTMENT OF TRANSPORTATION

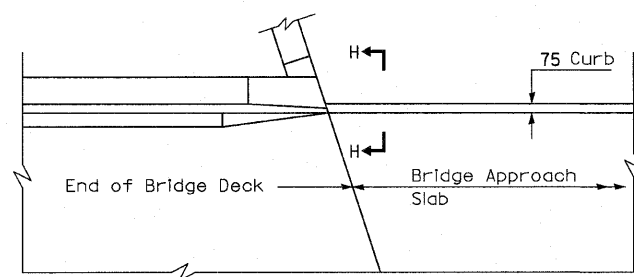
ROUTE NO.	SECTION	COUNTY	SHEET NO.	SHEET TOTAL
FAP 303 IL. 173	134B&B-2R-1	LAKE	137	73
FED. ROAD DEPT. NO. 7		ILLINOIS	FED. AID PROJECT	

SHEET NO. 10
17 SHEETS

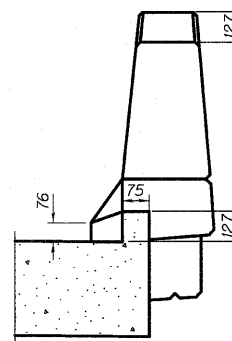


LONGITUDINAL CONSTRUCTION JOINT

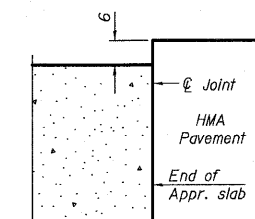
As approved by the Engineer, the Contractor may elect to reduce the widths of pour by use of the Optional Longitudinal Construction Joint shown. Joints shall be located at the edge of a traffic lane.



PARAPET TO CURB TRANSITION

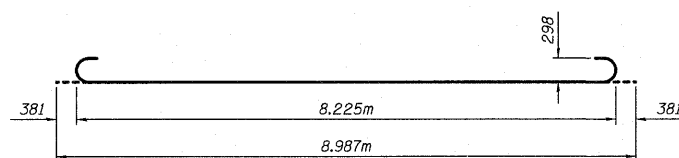


VIEW H-H

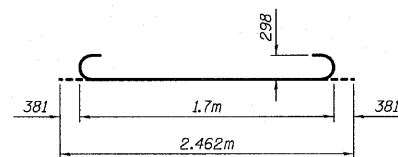


FLEXIBLE PAVEMENT

DETAIL A



BAR a₁(E)



BAR a₂(E)

NOTES:

All dimensions are in millimeters unless otherwise shown.

BRIDGE APPROACH SLAB -2
FAP 303 IL. ROUTE 173
OVER WEST BOAT CHANNEL
SECTION 134(B&B-2)R-1
LAKE COUNTY
STATION 25+098.390
STRUCTURE NO. 049-0055

DESIGNED	RGT
CHECKED	RJC/JRF
DRAWN	RDS
CHECKED	PAT2

Applied Technologies