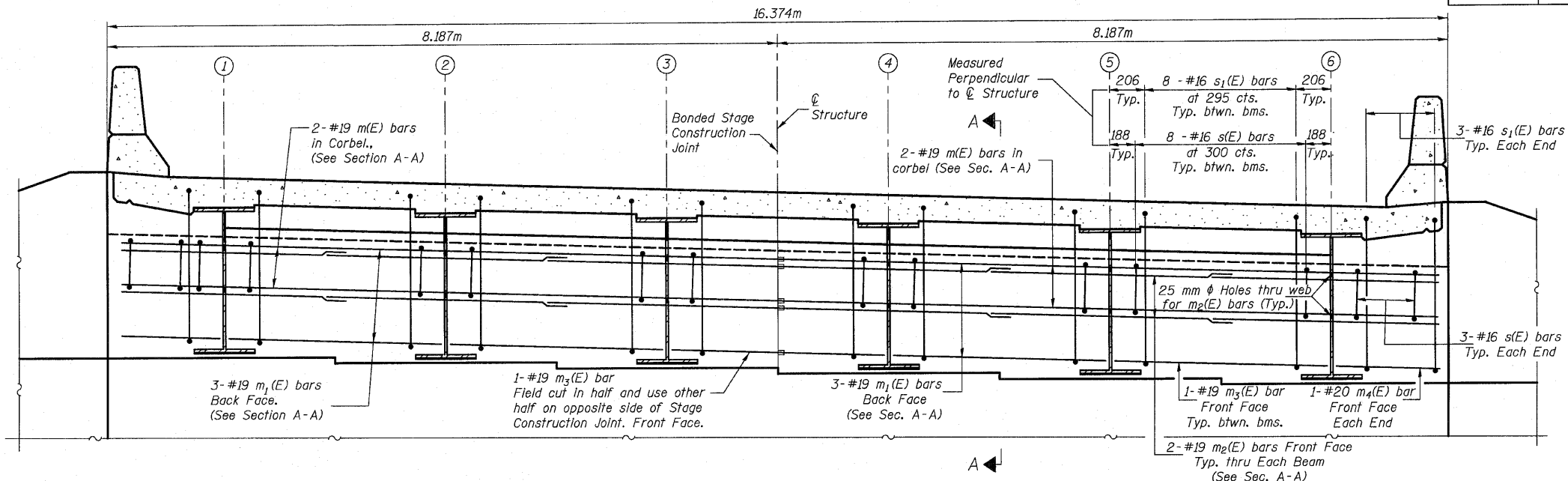


STATE OF ILLINOIS
DEPARTMENT OF TRANSPORTATION

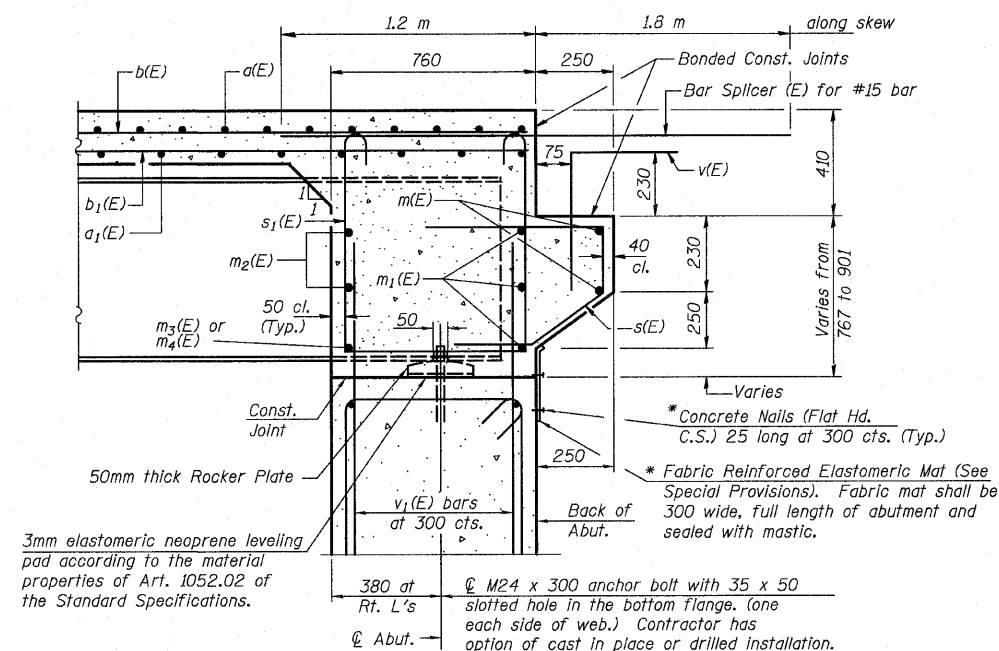
ROUTE NO.	SECTION	COUNTY	SHEET	SHEET	SHEET
FAP 303 IL 173	134(B&B-2)R-1	LAKE	137	89	23 SHEETS
FED. ROAD DIST. NO. 7		ILLINOIS	FED. AID PROJECT-		



END DIAPHRAGM AT ABUTMENT

NOTES

- Reinforcement bars in diaphragm are billed with superstructure on Sheet #8.
- Concrete in diaphragm is included with Concrete Superstructure on Sheet #8.
- For details of bars s(E) and s₁(E) see Sheet #8.
- The s(E) and s₁(E) bars shall be placed parallel to the beams. Spacing for these bars shall be at right angles to the beams.
- Reinforcement Bars designated (E) shall be Epoxy Coated.
- All dimensions are in millimeters (mm) except as noted.



SECTION A-A

Dimensions in Section A-A at right angles to abutment.
* Cost included with Concrete Structures.

MINIMUM BAR LAP

#19 bar = 850

SUPERSTRUCTURE DETAILS-1
FAP 303 IL. ROUTE 173
OVER EAST BOAT CHANNEL
SECTION 134(B&B-2)R-1
LAKE COUNTY
STATION 26+271.906
STRUCTURE NO. 049-0198

DESIGNED	JRF
CHECKED	RCJ
DRAWN	RDS
CHECKED	JRF

SI-DS1 (M) 4-30-99

