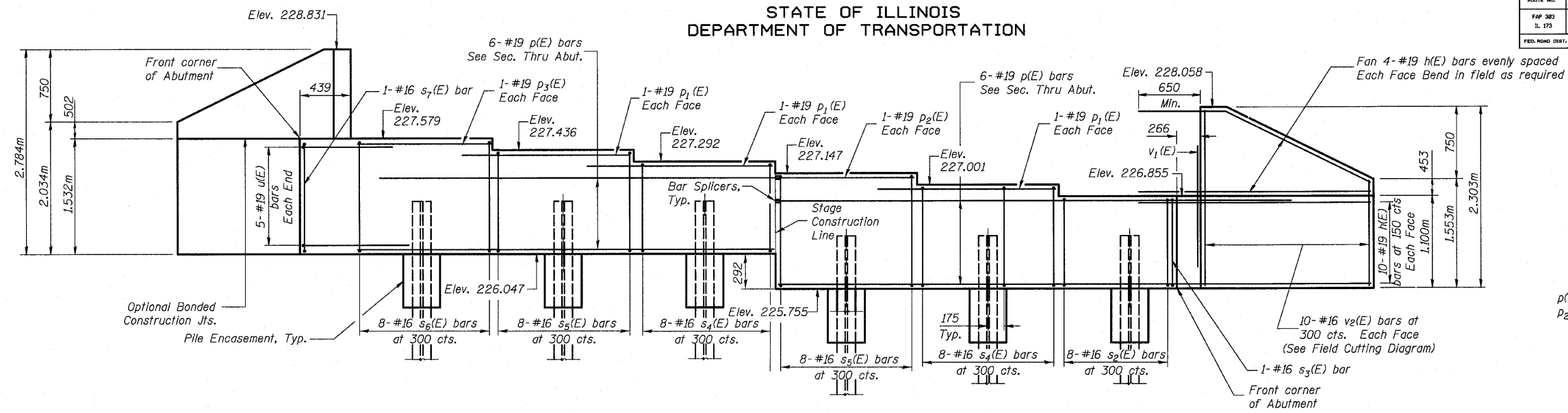


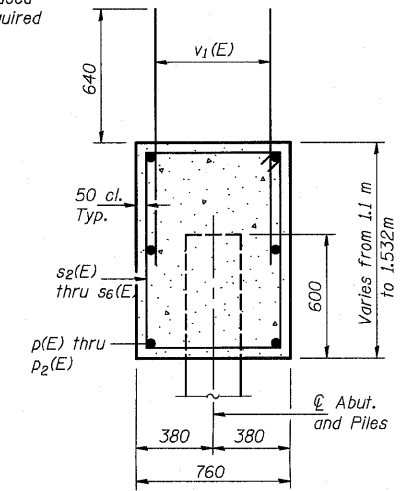
ROUTE NO.	SECTION	COUNTY	TOTAL SHEETS	SHEET NO.
FAP 303 IL. 173	134(B&B)-2R-1	LAKE	137	17
FED. ROAD DIST. NO. 7	ILLINOIS	FED. AID PROJECT:		

SHEET NO. 17
23 SHEETS

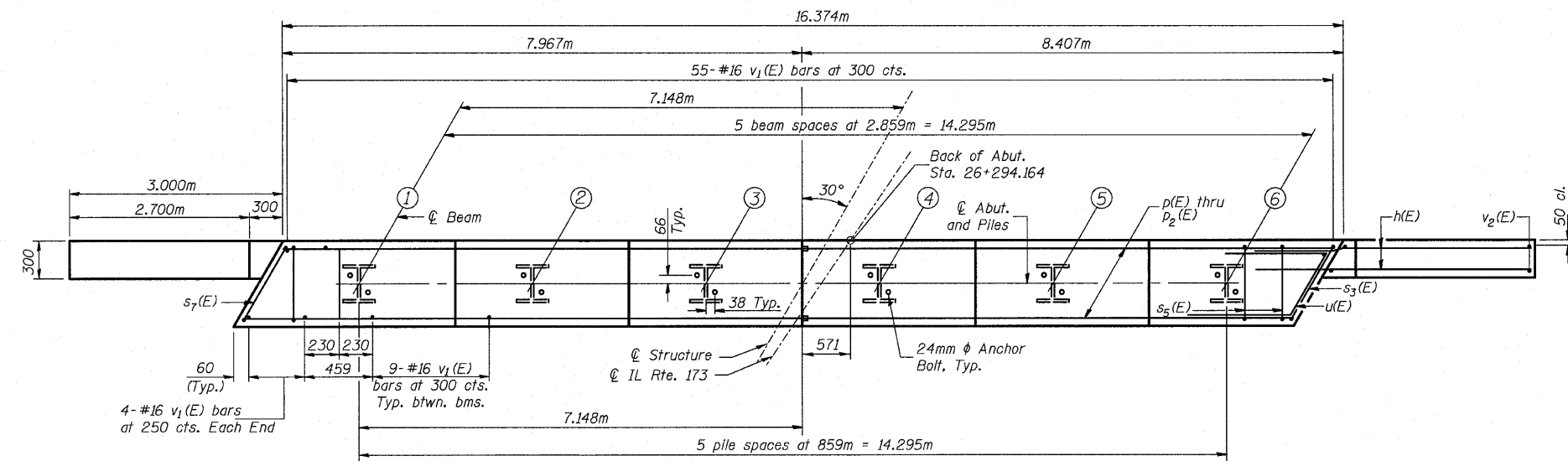
STATE OF ILLINOIS
DEPARTMENT OF TRANSPORTATION



EAST ABUTMENT ELEVATION
(Looking East)



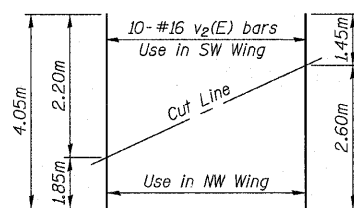
SEC. THRU ABUT.
Dimensions at right angle to abutment



PLAN

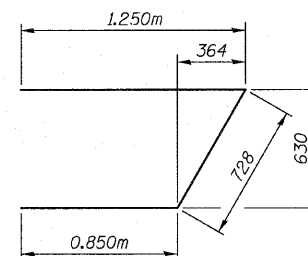
PILE DATA

Type: HP 310x79
Nominal Required Bearing: 580KN
Allowable Resistance Available: 580KN
Est. Length: 20.5m
No. Production Piles Required: 5
No. Test Piles: 1

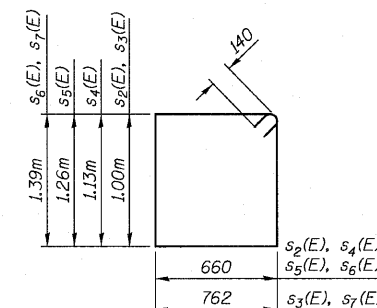


FIELD CUTTING DIAGRAM

Order v2(E) full length. Cut as shown and use remainder of bars in opposite wingwall.



BAR u(E)



BARS s2(E), s3(E), s4(E), s5(E), s6(E)

MINIMUM BAR LAP
#19 bar = 850

NOTES

Pour steps monolithically with cap.

Place reinforcement in cap to miss anchor bolts.

Reinforcement bars designated (E) shall be epoxy coated.

All dimensions are in millimeters (mm) except as noted.

Stage Construction Line differs from Stage Construction Line in the deck above due to the skew of the bridge.

See Sheet 21 For Pile Encasement details.

**EAST ABUTMENT
BILL OF MATERIAL**

Bar	No.	Size	Length	Shape
h(E)	56	#19	3.750	—
p(E)	12	#19	7.887	—
p1(E)	6	#19	3.540	—
p2(E)	2	#19	2.779	—
p3(E)	2	#19	2.170	—
s2(E)	8	#16	3.600	□
s3(E)	1	#16	3.804	□
s4(E)	16	#16	3.860	□
s5(E)	16	#16	4.128	□
s6(E)	8	#16	4.390	□
s7(E)	1	#16	4.594	□
u(E)	10	#19	2.828	—
v1(E)	108	#16	1.280	—
v2(E)	20	#16	4.050	—
Concrete Structures		m ³	20	
Concrete Encasement		m ³	2.0	
Reinforcement Bars Epoxy Coated		kg	1,470	
Furnishing Steel Piles HP310x79		m	105	
Driving Steel Piles HP310x79		m	105	
Test Pile, HP310x79		each	1	
Structure Excavation		m ³	550	

EAST ABUTMENT
FAP 303 IL. ROUTE 173
OVER EAST BOAT CHANNEL
SECTION 134(B&B)-2R-1
LAKE COUNTY
STATION 26+271.906
STRUCTURE NO. 049-0198

DESIGNED	JRF
CHECKED	RCJ
DRAWN	RDS
CHECKED	JRF

