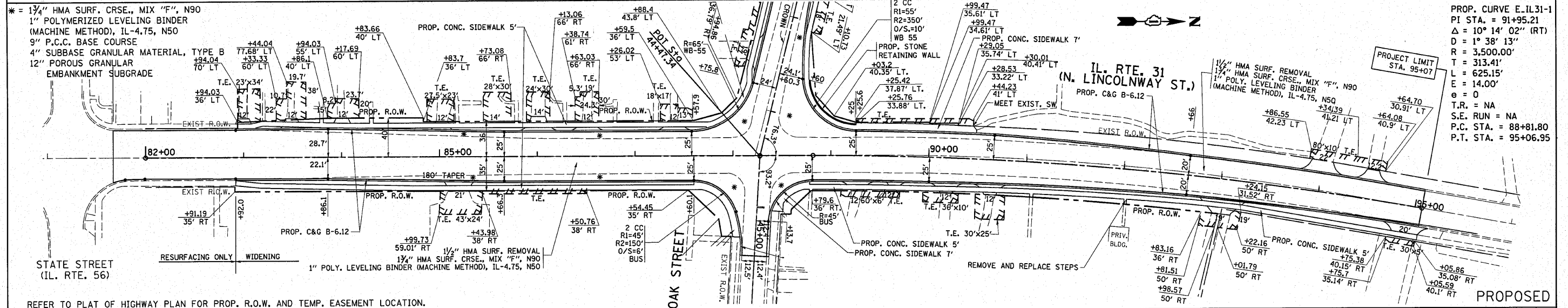
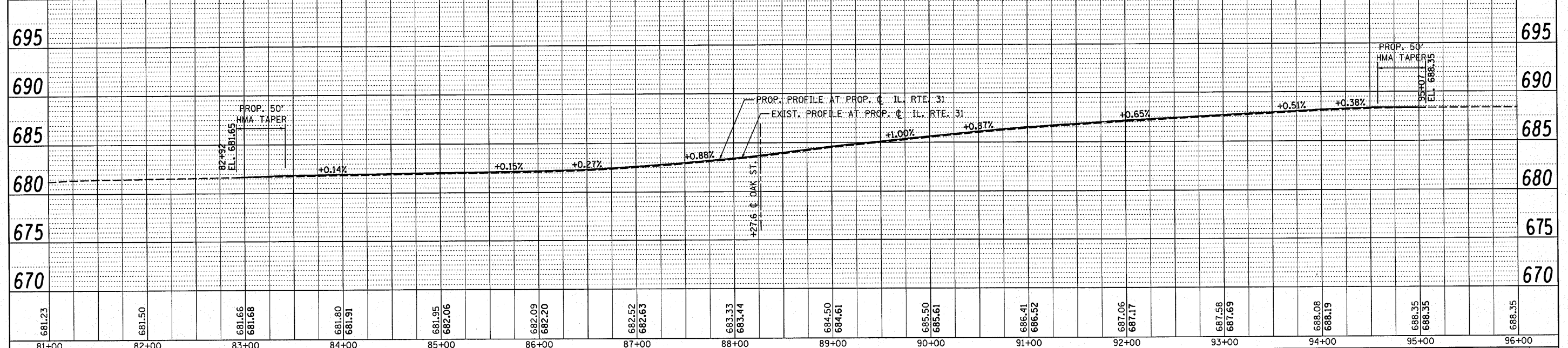


EXIST. CURVE E31-3
 PI STA. = 91+93.95
 Δ = 10° 11' 34" (RT)
 D = 2' 05" 11"
 R = 2746.20'
 T = 244.92'
 L = 488.55'
 E = 10.90'
 e = 0
 T.R. =
 S.E. RUN =
 P.C. STA. = 89+49.03
 P.T. STA. = 94+37.57



PROP. CURVE E-IL-31-1
 PI STA. = 91+95.21
 Δ = 10° 14' 02" (RT)
 D = 1' 38" 13"
 R = 3,500.00'
 T = 313.41'
 L = 625.15'
 E = 14.00'
 e = 0
 T.R. = NA
 S.E. RUN = NA
 P.C. STA. = 88+81.80
 P.T. STA. = 95+06.95

REFER TO PLAT OF HIGHWAY PLAN FOR PROP. R.O.W. AND TEMP. EASEMENT LOCATION.



FILE NAME =	USER NAME = qureshiya	DESIGNED -	REVISED -	STATE OF ILLINOIS DEPARTMENT OF TRANSPORTATION				IL. RTE. 31 @ OAK STREET EXISTING & PROPOSED ROADWAY PLAN				F.A.U. RTE.	SECTION	COUNTY	TOTAL SHEETS	SHEET NO.		
c:\pwwork\FWIDOT\QURESHIYA\811275\P101893-sht-plnprf.dgn		DRAWN -	REVISED -					SCALE: 1"=50'	SHEET NO.	OF	SHEETS	STA.	TO STA.	3887	A-R-N-1	KANE	77	12
PLOT SCALE = 50.000' / IN.		CHECKED -	REVISED -					CONTRACT NO. 62914				ILLINOIS FED. AID PROJECT						
PLOT DATE = 4/6/2010		DATE -	REVISED -															

DATE	BY

DATE	BY