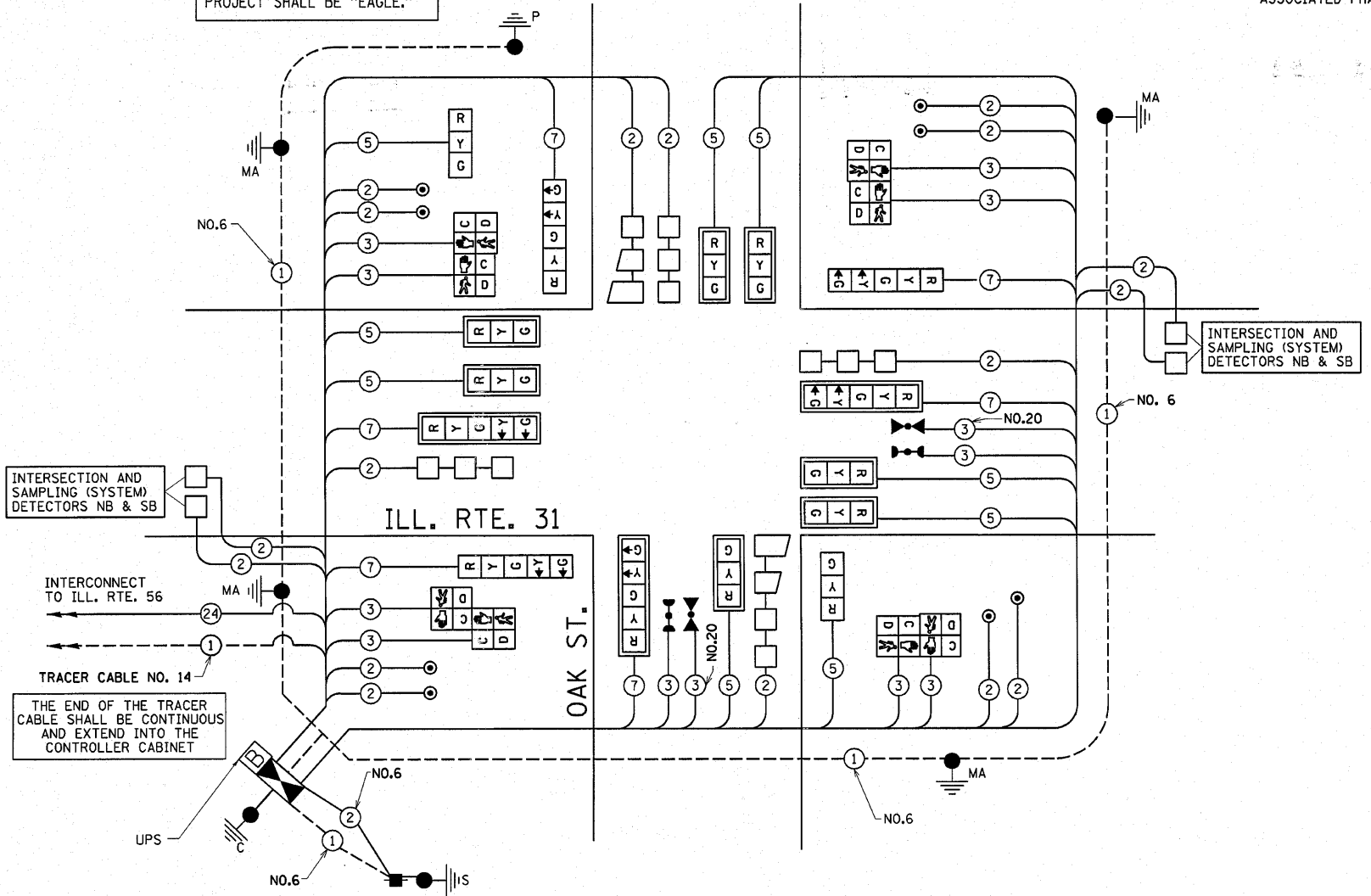


NOTE:
THE PROPOSED TRAFFIC SIGNAL
CONTROL EQUIPMENT FOR THIS
PROJECT SHALL BE "EAGLE."

CABLE PLAN



INTERSECTION AND SAMPLING (SYSTEM) DETECTORS NB & SB

INTERCONNECT TO ILL. RTE. 56

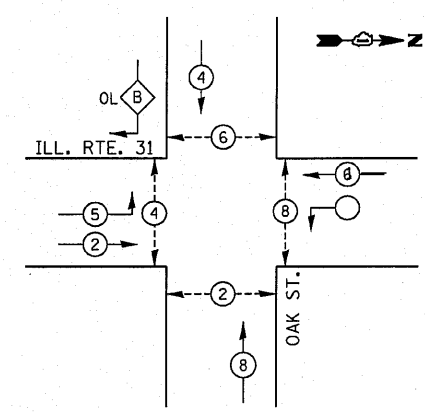
TRACER CABLE NO. 14
THE END OF THE TRACER CABLE SHALL BE CONTINUOUS AND EXTEND INTO THE CONTROLLER CABINET

UPS

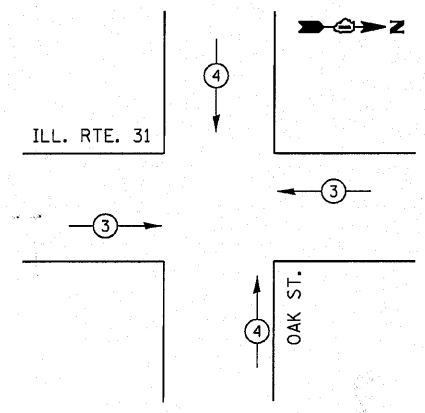
- #### LEGEND
- DUAL ENTRY PHASE
 - SINGLE ENTRY PHASE
 - ◇ OL OVERLAP
 - PEDESTRIAN PHASE
 - NUMBER REFERS TO ASSOCIATED PHASE

PHASE DESIGNATION DIAGRAM

CONTROLLER SEQUENCE



EMERGENCY VEHICLE PREEMPTION SEQUENCE



PROPOSED EMERGENCY VEHICLE PREEMPTORS		
EMERGENCY VEHICLE PREEMPTOR	3	4
MOVEMENT	←	↑

SCHEDULE OF QUANTITIES

QNTY.	UNIT	PAY ITEM
171	SQ FT	PORTLAND CEMENT CONCRETE SIDEWALK 5 INCH
171	SQ FT	DETECTABLE WARNINGS
1	CAL MO	CHANGABLE MESSAGE SIGN
25.5	SQ FT	SIGN PANEL - TYPE 1
551	FOOT	CONDUIT IN TRENCH, 2" DIA., GALVANIZED STEEL
30	FOOT	CONDUIT IN TRENCH, 2 1/2" DIA., GALVANIZED STEEL
83	FOOT	CONDUIT IN TRENCH, 3" DIA., GALVANIZED STEEL
8	FOOT	CONDUIT IN TRENCH, 4" DIA., GALVANIZED STEEL
195	FOOT	CONDUIT PUSHED, 2" DIA., GALVANIZED STEEL
350	FOOT	CONDUIT PUSHED, 4" DIA., GALVANIZED STEEL
4	EACH	HANDHOLE
4	EACH	HEAVY-DUTY HANDHOLE
2	EACH	DOUBLE HANDHOLE
668	FOOT	TRENCH AND BACKFILL FOR ELECTRICAL WORK
1	EACH	FULL-ACTUATED CONTROLLER AND TYPE IV CABINET, SPECIAL
1	EACH	TRANSCEIVER - FIBER OPTIC
1102	FOOT	ELECTRIC CABLE IN CONDUIT, SIGNAL NO. 14 2C
1,407	FOOT	ELECTRIC CABLE IN CONDUIT, SIGNAL NO. 14 3C
1630	FOOT	ELECTRIC CABLE IN CONDUIT, SIGNAL NO. 14 5C
905	FOOT	ELECTRIC CABLE IN CONDUIT, SIGNAL NO. 14 7C
2,249	FOOT	ELECTRIC CABLE IN CONDUIT, LEAD-IN, NO. 14 1 PAIR
78.0	FOOT	ELECTRIC CABLE IN CONDUIT, SERVICE, NO. 6 2 C
511.5	FOOT	ELECTRIC CABLE IN CONDUIT, GROUNDING, NO. 6 1 C
* 265	FOOT	ELECTRIC CABLE IN CONDUIT NO. 20 3/C, TWISTED, SHIELDED
1	EACH	TRAFFIC SIGNAL POST, GALVANIZED STEEL 16 FT.
1	EACH	STEEL MAST ARM ASSEMBLY AND POLE, 36 FT.
1	EACH	STEEL MAST ARM ASSEMBLY AND POLE, 40 FT.
1	EACH	STEEL MAST ARM ASSEMBLY AND POLE, 44 FT.
1	EACH	STEEL MAST ARM ASSEMBLY AND POLE, 54 FT.
4	FOOT	CONCRETE FOUNDATION, TYPE A
4	FOOT	CONCRETE FOUNDATION, TYPE C
52	FOOT	CONCRETE FOUNDATION, TYPE E 36-INCH DIAMETER
7	EACH	SIGNAL HEAD, L.E.D., 1-FACE, 3-SECTION, MAST ARM MOUNTED
2	EACH	SIGNAL HEAD, L.E.D., 1-FACE, 3-SECTION, BRACKET MOUNTED
3	EACH	SIGNAL HEAD, L.E.D., 1-FACE, 5-SECTION, BRACKET MOUNTED
3	EACH	SIGNAL HEAD, L.E.D., 1-FACE, 5-SECTION, MAST ARM MOUNTED
4	EACH	PEDESTRIAN SIGNAL HEAD, L.E.D., 2-FACE, BRACKET MOUNTED WITH COUNTDOWN TIMER
10	EACH	TRAFFIC SIGNAL BACKPLATE, LOUVERED, ALUMINUM
9	EACH	INDUCTIVE LOOP DETECTOR
710	FOOT	DETECTOR LOOP, TYPE 1
* 2	EACH	LIGHT DETECTOR
* 1	EACH	LIGHT DETECTOR AMPLIFIER
8	EACH	PEDESTRIAN PUSH-BUTTON
1	EACH	SERVICE INSTALLATION, POLE MOUNT
1	EACH	UNINTERRUPTABLE POWER SUPPLY

*100% COST TO THE NORTH AURORA FIRE PROTECTION DEPARTMENT

I. D. O. T. TRAFFIC SIGNAL INSTALLATION ELECTRICAL SERVICE REQUIREMENTS				TOTAL WATTAGE
TYPE	NO. LAMPS	WATTAGE (INCANDESCENT)	% OPERATION	
SIGNAL (RED)	15	17	0.50	110.50
(YELLOW)	15	25	0.25	37.50
(GREEN)	15	15	0.25	48.75
ARROW	12	12	0.10	14.40
PED. SIGNAL	8	25	1.00	200.00
CONTROLLER	1	100	1.00	100.00
ILLUM. SIGN			0.05	
FLASHER			0.50	
TOTAL =				813.15

NOTE:
THE PROPOSED TRAFFIC SIGNAL
CONTROL EQUIPMENT FOR THIS
PROJECT SHALL BE "EAGLE."

FILE NAME =	USER NAME =	DESIGNED -	REVISED -
cs:\pw\work\pww\dot\kanthaphixybc\d011780	NTS.dgn	DRAWN -	REVISED -
		CHECKED -	REVISED -
		DATE -	REVISED -

STATE OF ILLINOIS
DEPARTMENT OF TRANSPORTATION

TRAFFIC SIGNAL SUMMARY OF QUANTITIES
ILL. RTE. 31 @ OAK ST.

F.A.U. RTE.	SECTION	COUNTY	TOTAL SHEETS	SHEET NO.
3887	A-R-N-1	KANE	77	39
FED. ROAD DIST. NO.			ILLINOIS FED. AID PROJECT	
			CONTRACT NO. 62914	

SCALE: SHEET NO. OF SHEETS STA. TO STA.