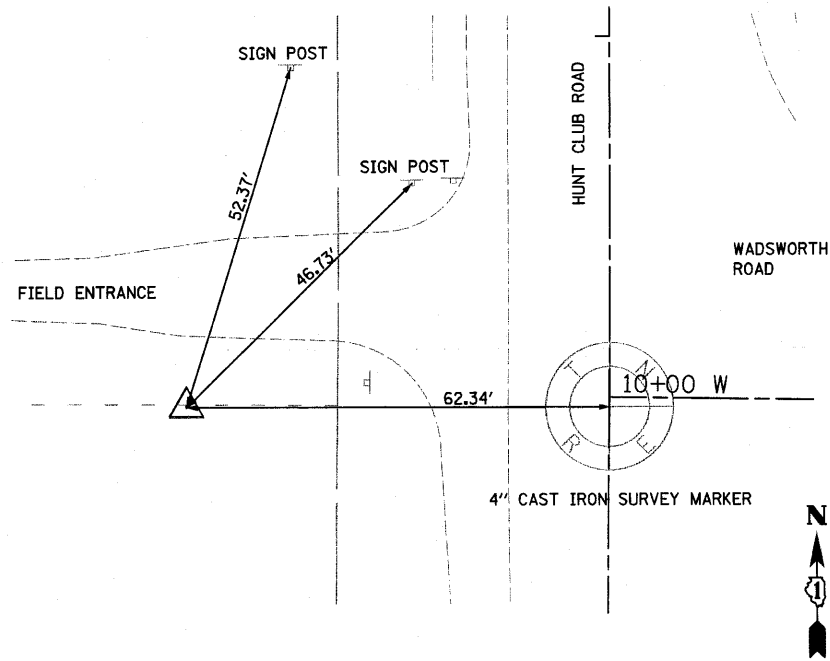


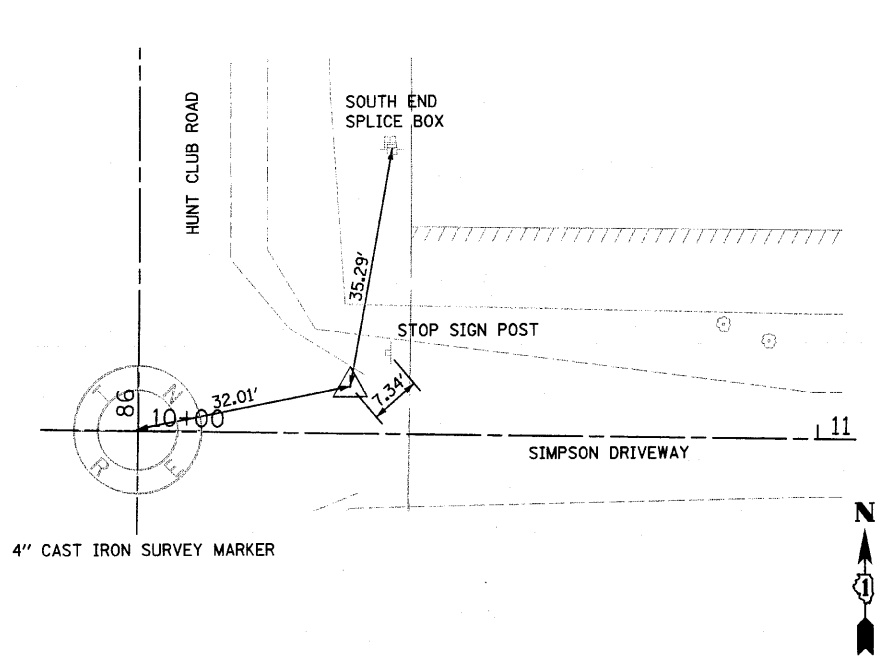
NORTHING: 2099255.839
 EASTING: 1081614.674
 ELEVATION: 733.79

CP 5
 SPIKE IN PARKWAY



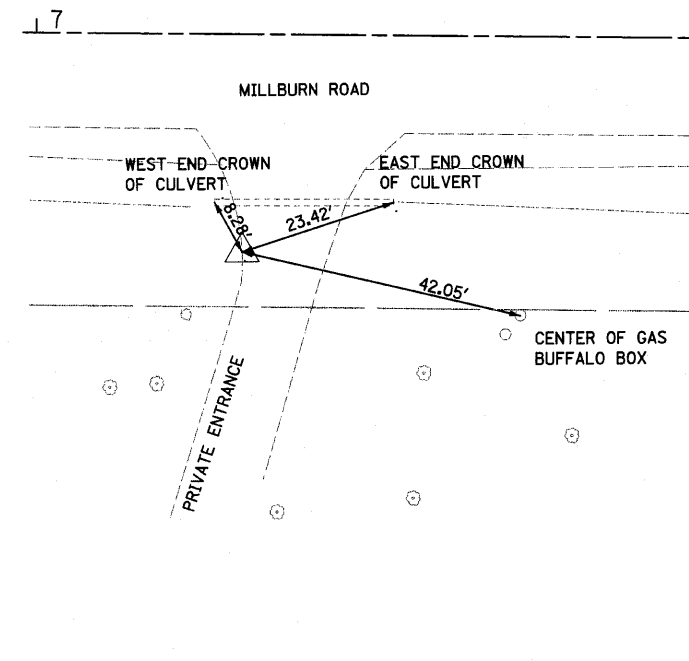
NORTHING: 2096616.662
 EASTING: 1081688.874
 ELEVATION: 708.17

CP 20
 MAG NAIL IN
 HMA PAVEMENT



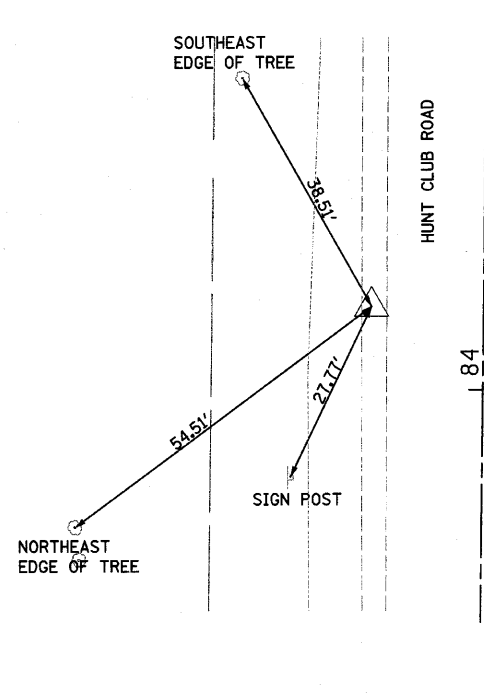
NORTHING: 2096582.8187
 EASTING: 1081387.8122
 ELEVATION: 713.71

CP 21
 MAG NAIL IN
 HMA PAVEMENT



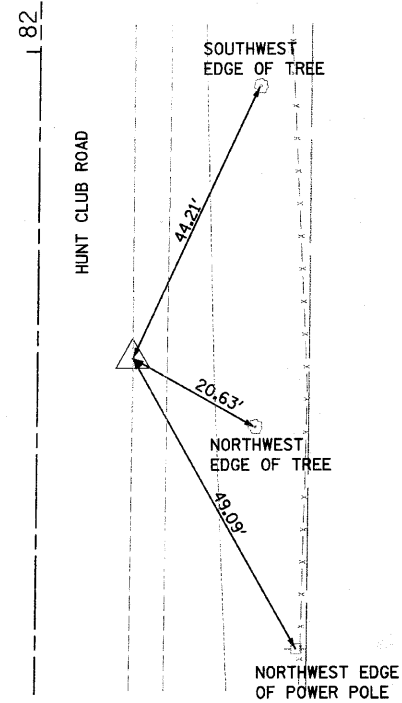
NORTHING: 2096422.6659
 EASTING: 1081638.4467
 ELEVATION: 709.05

CP 22
 SPIKE IN AGGREGATE SHOULDER



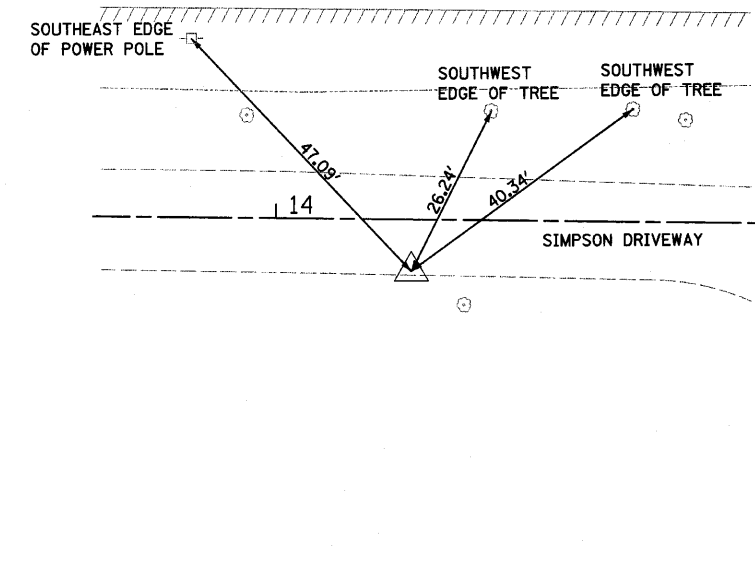
NORTHING: 2096165.2605
 EASTING: 1081665.2279
 ELEVATION: 708.85

CP 23
 MAG NAIL IN
 HMA PAVEMENT



NORTHING: 2096596.2243
 EASTING: 1082077.5293
 ELEVATION: 705.14

CP 24
 SPIKE IN AGGREGATE
 SURFACE COURSE



FILE NAME = s:\p1\1988-1999\1982\micos\plan sheets\01-ah-tie-offs.dgn

1170 SOUTH HOUBOLT ROAD
 JOLIET, ILLINOIS 60431
 (815) 744-4200

USER NAME = saron	DESIGNED - MAG	REVISED -
PLOT SCALE = 20,000' / IN.	DRAWN - VLF	REVISED -
PLOT DATE = 4/1/2012	CHECKED - RKK	REVISED -
	DATE -	REVISED -

STATE OF ILLINOIS
 DEPARTMENT OF TRANSPORTATION

CONTROL POINT TIE-OFFS

SCALE: N.T.S. SHEET NO. OF SHEETS STA. N/A TO STA. N/A

F.A.U. RTE. 2661	SECTION 02-00076-13-CH	COUNTY LAKE	TOTAL SHEETS 177	SHEET NO. 34
CONTRACT NO. 63457				