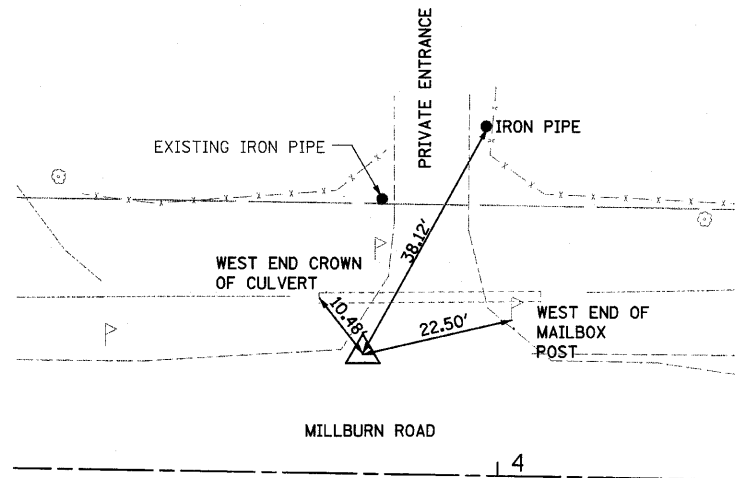


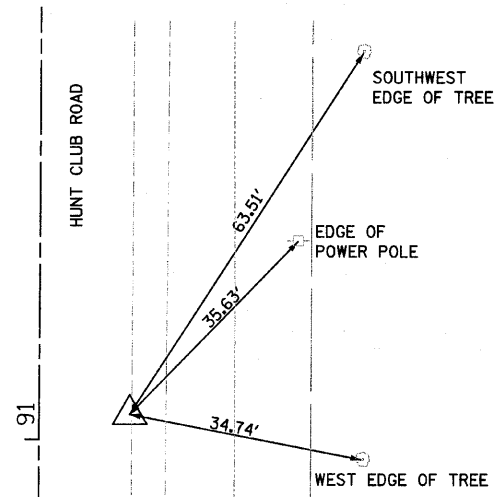
NORTHING: 2096638.533
 EASTING: 1081037.925
 ELEVATION: 726.51

CP 25
 MAG NAIL IN
 HMA PAVEMENT



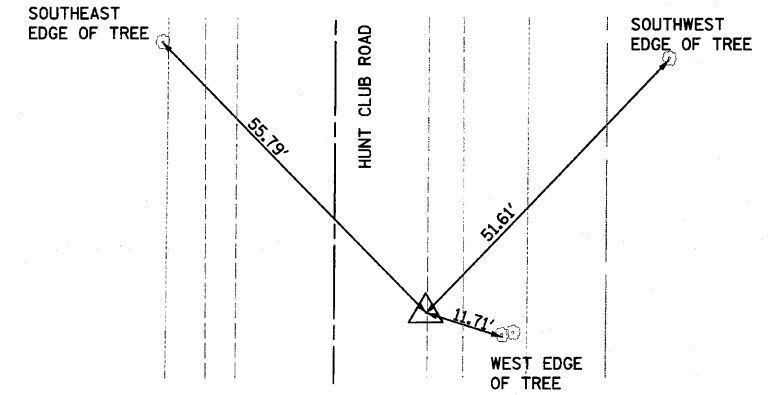
NORTHING: 2097114.0276
 EASTING: 1081674.6787
 ELEVATION: 711.70

CP 50
 MAG NAIL IN
 HMA PAVEMENT



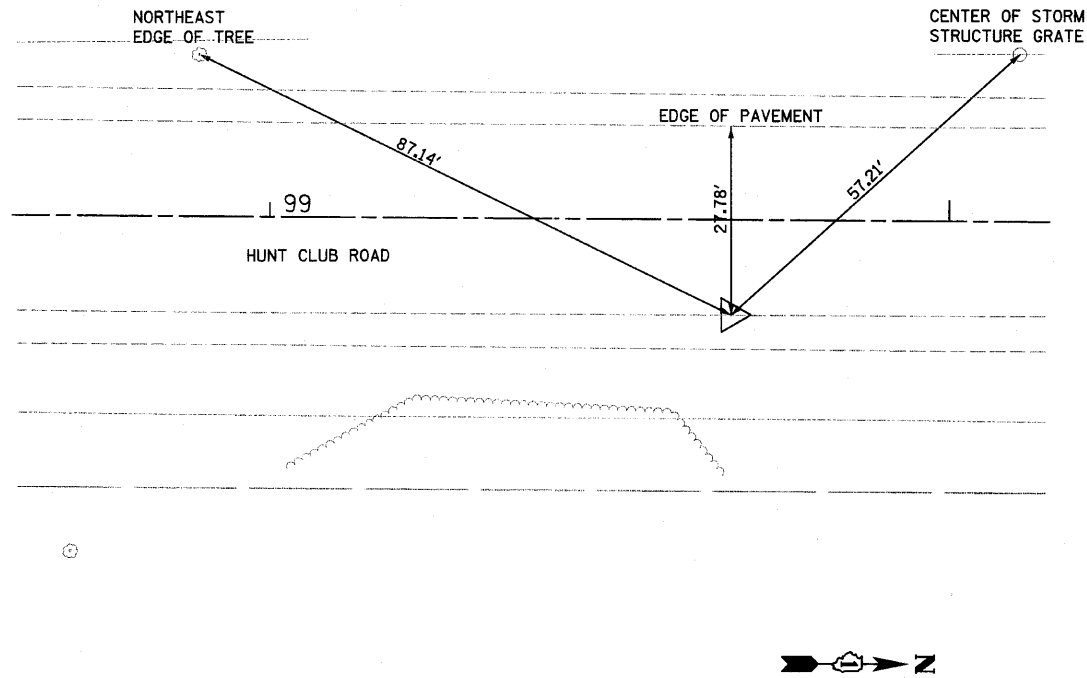
NORTHING: 2097738.5514
 EASTING: 1081679.3767
 ELEVATION: 717.74

CP 51
 MAG NAIL IN
 HMA PAVEMENT



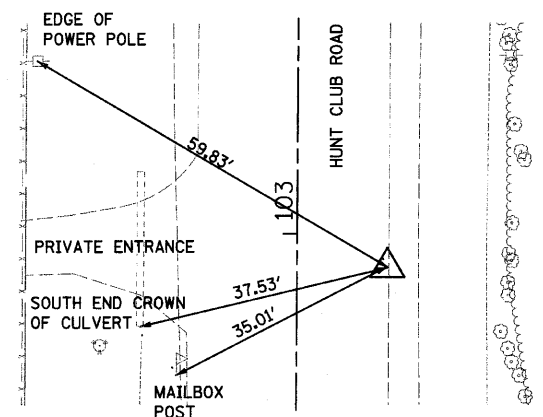
NORTHING: 2097978.2188
 EASTING: 1081681.6212
 ELEVATION: 718.83

CP 52
 MAG NAIL IN
 HMA PAVEMENT



NORTHING: 2098305.3745
 EASTING: 1081683.3628
 ELEVATION: 722.06

CP 53
 MAG NAIL IN
 HMA PAVEMENT



BENCH MARK NO.	LOCATION/DESCRIPTION	ELEVATION
1	RR SPIKE IN PP AT NE CORNER OF HUNT CLUB ROAD AND WADSWORTH ROAD (BM 23A, LAKE COUNTY)	733.31
2	TOP CENTERLINE BOLT AT RCCP, E. SIDE OF ROAD / 1ST CULVERT N. OF WADSWORTH ROAD	729.51
3	TOP CENTERLINE BOLT AT RCCP, N. SIDE OF ROAD, ±600' E. ON WADSWORTH ROAD	725.20
4	TOP S. CENTERLINE BOLT RCCP AT 1ST DRIVEWAY N. OF MILLBURN ROAD ON W. SIDE ROAD	720.29
5	TOP CENTERLINE END OF RCCP AT HUNT CLUB ROAD AND MILLBURN ROAD N. SIDE OF INTERSECTION ON W. SIDE	707.27

STATE OF ILLINOIS
 DEPARTMENT OF TRANSPORTATION

CONTROL POINT TIE-OFFS & BENCHMARKS

F.A.U. RTE.	SECTION	COUNTY	TOTAL SHEETS	SHEET NO.
2661	02-00076-13-CH	LAKE	177	35
CONTRACT NO. 63457				

SCALE: N.T.S. SHEET NO. OF SHEETS STA. N/A TO STA. N/A

FED. ROAD DIST. NO. 1 ILLINOIS FED. AID PROJECT

FILE NAME = ar\p1\1980-1995\1982\micro\plan sheets\DI-ahit-tie-off.rxdgn

1170 SOUTH HOUBOLT ROAD
 JOLIET, ILLINOIS 60431
 (815) 744-4200

USER NAME = sar-on	DESIGNED - MAG	REVISED -
PLOT SCALE = 20.0000' / IN.	DRAWN - VLF	REVISED -
PLOT DATE = 4/1/2012	CHECKED - RKK	REVISED -
	DATE -	REVISED -