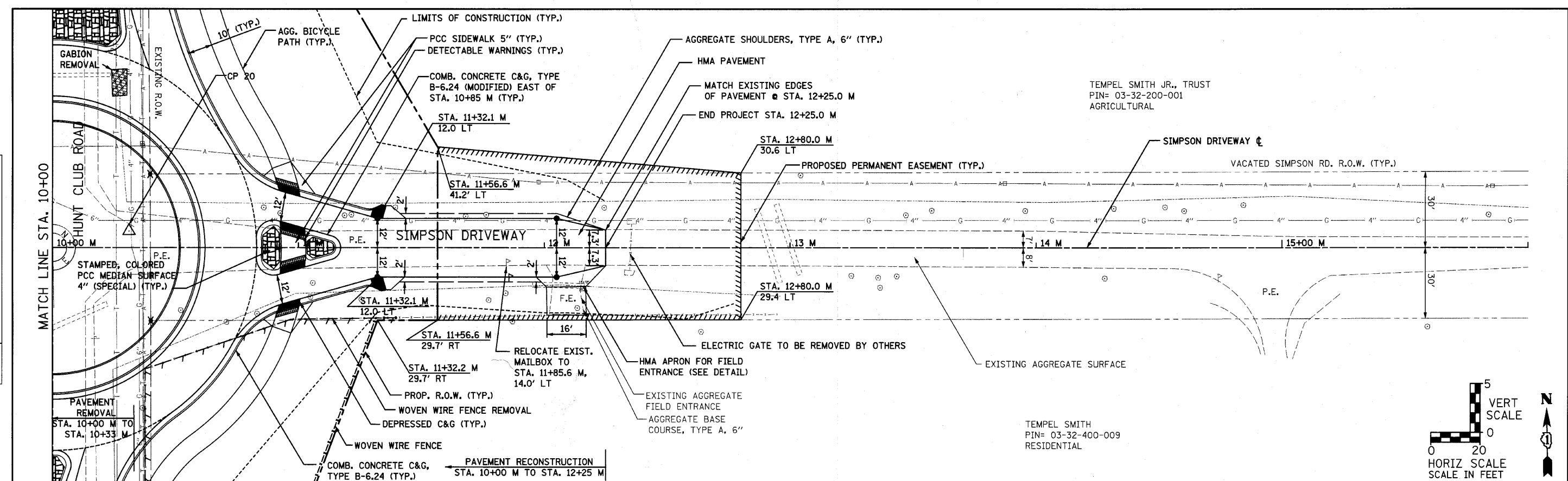


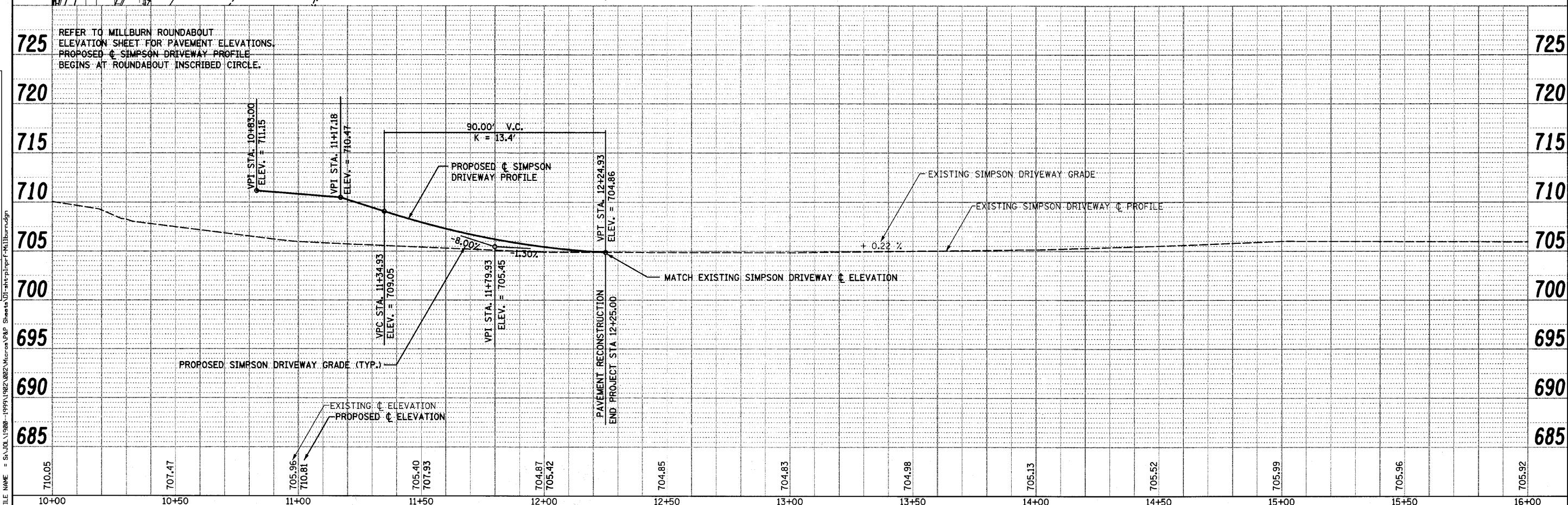
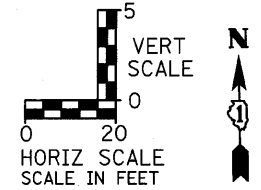
DATE	
BY	
PLAN	
SURVEYED	
ALIGNED	
CHECKED	
NO. OF WAY CHECKED	
ROAD FILE NAME	

DATE	
BY	
PROFILE	
SURVEYED	
GRADES CHECKED	
NO. NOTED	
STRUCTURE NOTATIONS	



TEMPEL SMITH JR., TRUST
PIN= 03-32-200-001
AGRICULTURAL

TEMPEL SMITH
PIN= 03-32-400-009
RESIDENTIAL



1170 SOUTH HOUBOLT ROAD
JOLIET, ILLINOIS 60431
(815) 744-4200

USER NAME = marog	DESIGNED - MAG	REVISED - SAI - 9/10/10
	CHECKED - RKK	REVISED -
	DRAWN - VLF	REVISED -
	CHECKED - RKK	REVISED -

STATE OF ILLINOIS
DEPARTMENT OF TRANSPORTATION

SIMPSON DRIVEWAY PLAN AND PROFILE

SCALE: AS SHOWN SHEET NO. OF SHEETS STA. 10+00 TO STA. 16+00

F.A. RTE.	SECTION	COUNTY	TOTAL SHEETS	SHEET NO.
2661	02-00076-13-CH	LAKE	177	45
CONTRACT NO. 63457				

FILE NAME = S:\JUL1\1988-1994\1982\082\Micros\VP Sheet\01-181r-p\p1p1r\F:\1181r\rdgjn