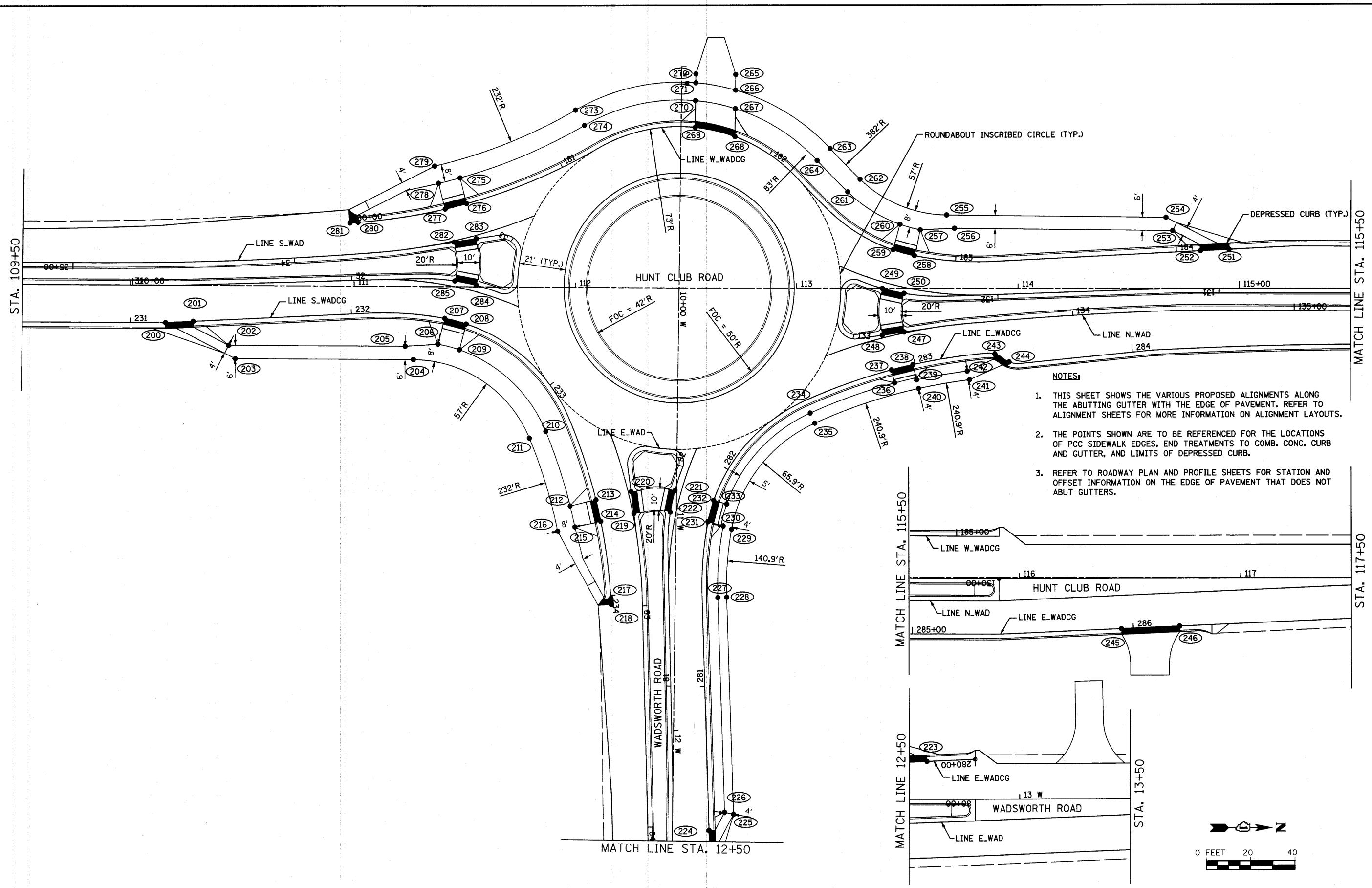
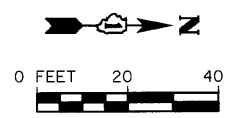
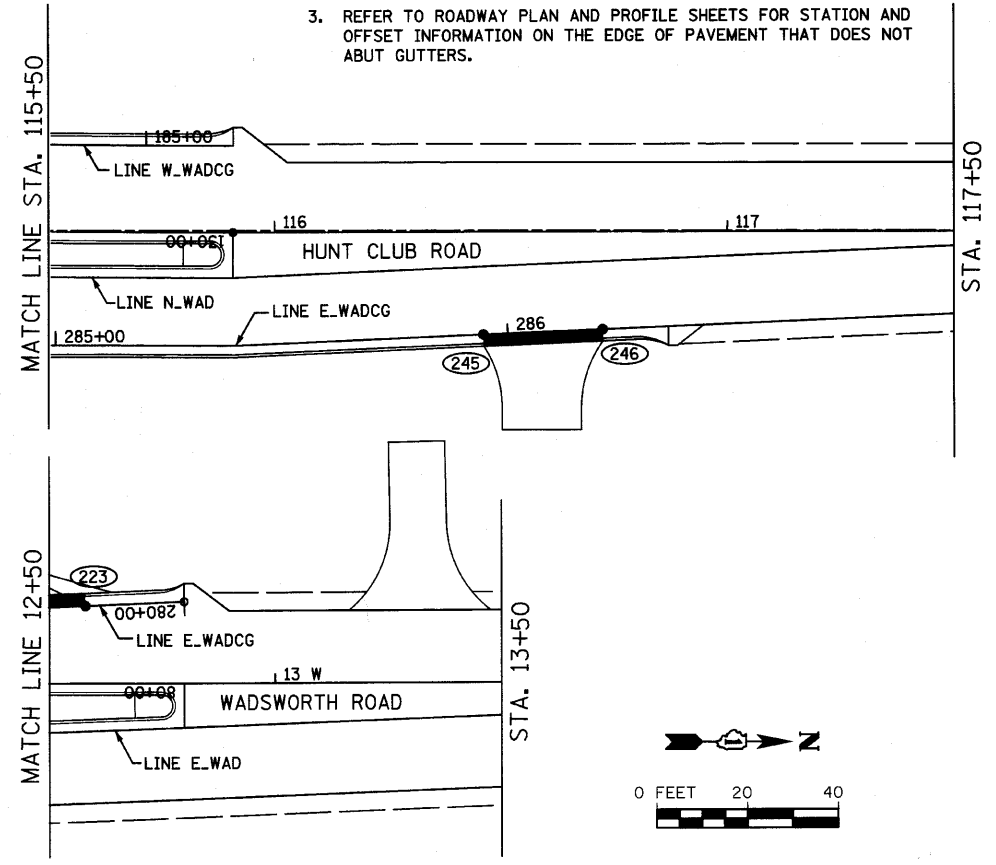


FILE NAME = s:\j\11700-1095\1092\002\micro\Plan Sheets\01-ahf-intersec.dgn



- NOTES:**
1. THIS SHEET SHOWS THE VARIOUS PROPOSED ALIGNMENTS ALONG THE ABUTTING GUTTER WITH THE EDGE OF PAVEMENT. REFER TO ALIGNMENT SHEETS FOR MORE INFORMATION ON ALIGNMENT LAYOUTS.
  2. THE POINTS SHOWN ARE TO BE REFERENCED FOR THE LOCATIONS OF PCC SIDEWALK EDGES, END TREATMENTS TO COMB. CONC. CURB AND GUTTER, AND LIMITS OF DEPRESSED CURB.
  3. REFER TO ROADWAY PLAN AND PROFILE SHEETS FOR STATION AND OFFSET INFORMATION ON THE EDGE OF PAVEMENT THAT DOES NOT ABUT GUTTERS.



**STRAND ASSOCIATES, INC.**  
1170 SOUTH HOUBOLT ROAD  
JOLIET, ILLINOIS 60431  
(815) 744-4200

USER NAME = saron	DESIGNED -	REVISED -
PLOT SCALE = 20,0000' / IN.	DRAWN -	REVISED -
PLOT DATE = 4/1/2010	CHECKED -	REVISED -
	DATE -	REVISED -

**STATE OF ILLINOIS**  
**DEPARTMENT OF TRANSPORTATION**

**ROUNDABOUT DETAIL SHEET**  
**WADSWORTH ROAD AND HUNT CLUB ROAD**  
SCALE: AS SHOWN SHEET NO. OF SHEETS STA. N/A TO STA. N/A

F.A.U. RTE. 2661	SECTION 02-00076-13-CH	COUNTY LAKE	TOTAL SHEETS 177	SHEET NO. 91
CONTRACT NO. 63457				
FED. ROAD DIST. NO. 1 ILLINOIS FED. AID PROJECT				