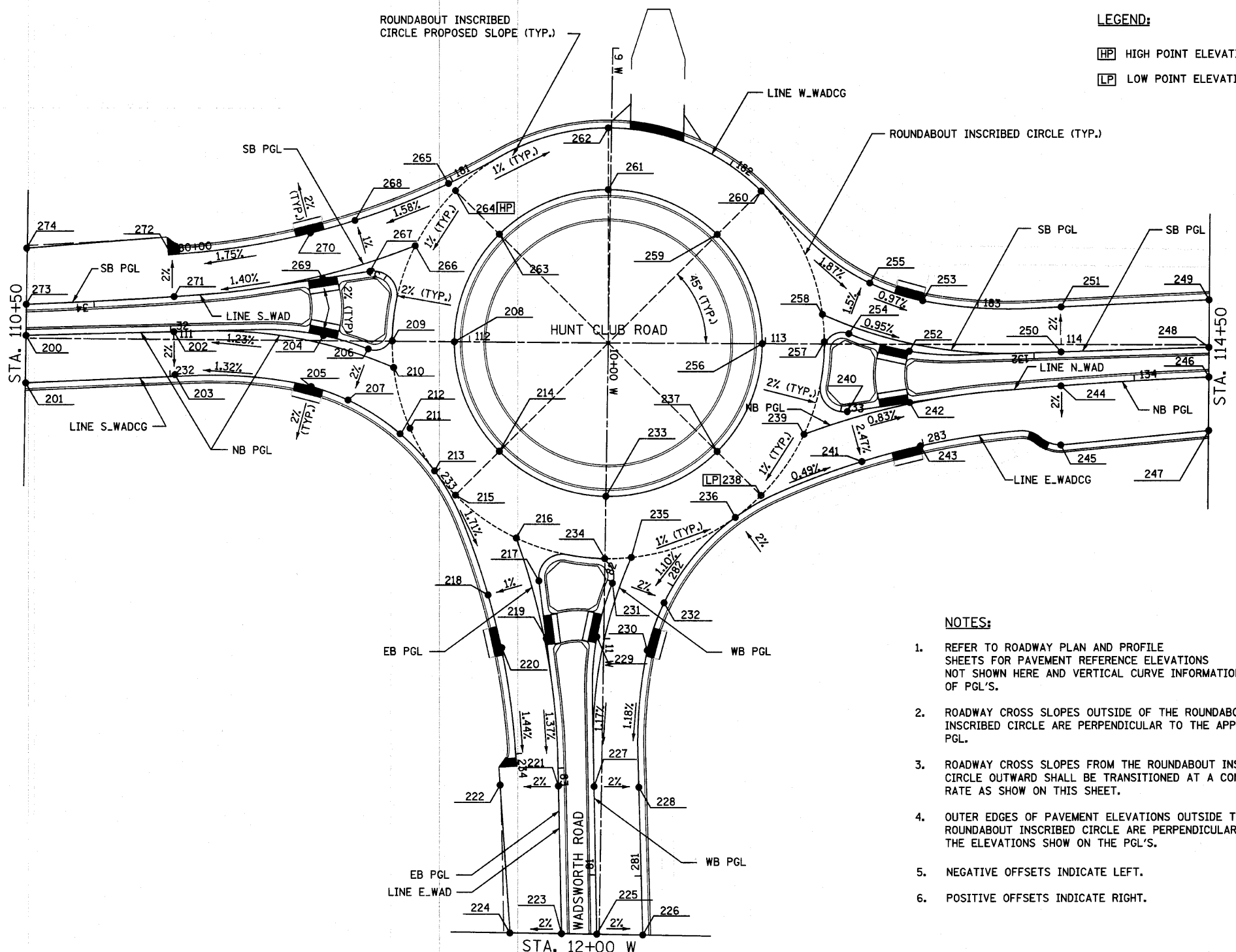
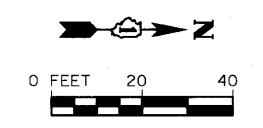


ELEVATION TABLE				
POINT NO.	CHAIN	STATION	OFFSET	ELEVATION
200	S_WAD	31+51.19	0.00	734.36
201	S_WADCG	231+51.09	0.00	734.04
202	S_WAD	32+01.09	0.00	734.98
203	S_WADCG	232+01.67	0.00	734.68
204	S_WAD	32+51.86	0.00	735.65
205	S_WADCG	232+47.45	0.00	735.28
206	S_WAD	32+67.68	0.00	735.86
207	S_WADCG	232+61.34	0.00	735.49
208	S_WAD	32+78.66	21.11	736.44
209	S_WAD	32+78.64	0.59	736.02
210	S_WAD	32+72.90	7.46	735.93
211	S_WADCG	232+83.64	-3.61	735.73
212	S_WADCG	232+82.38	0.00	735.63
213	S_WADCG	232+99.54	0.00	735.50
214	S_WADCG	233+05.55	-21.87	735.86
215	S_WADCG	233+10.17	-1.55	735.44
216	E_WAD	82+29.71	12.60	735.16
217	E_WAD	82+36.41	0.00	735.00
218	S_WADCG	233+56.43	0.00	734.82
219	E_WAD	82+56.07	0.00	734.70
220	S_WADCG	233+63.83	0.00	734.61
221	E_WAD	83+06.03	0.00	734.01
222	E_WAD	83+05.31	19.69	733.56
223	E_WAD	83+55.97	0.00	733.33
224	E_WAD	83+55.97	17.45	732.99
225	E_WAD	80+79.97	0.00	733.28
226	E_WADCG	280+79.96	0.00	732.97
227	E_WAD	81+29.95	0.00	733.87
228	E_WADCG	281+30.00	0.00	733.55
229	E_WAD	81+80.59	0.00	734.50
230	E_WADCG	281+76.33	0.00	734.13
231	E_WAD	81+99.52	0.00	734.71
232	E_WADCG	281+93.53	0.00	734.32
233	E_WAD	82+10.63	21.10	735.29
234	E_WAD	82+08.60	0.59	734.87
235	E_WAD	82+04.87	7.46	734.78
236	E_WADCG	282+31.49	0.00	734.43
237	E_WADCG	282+37.80	-21.97	734.72
238	E_WADCG	282+42.65	-1.72	734.30
239	N_WAD	132+95.38	12.62	734.57
240	N_WAD	133+02.21	0.00	734.55
241	E_WADCG	282+78.45	0.00	734.09
242	N_WAD	133+23.61	0.00	734.26
243	E_WADCG	282+98.95	0.00	733.89
244	N_WAD	133+75.10	0.00	733.85
245	E_WADCG	283+48.04	0.00	733.45
246	N_WAD	134+25.07	0.00	733.43
247	E_WADCG	283+98.26	0.00	733.07
248	N_WAD	131+40.94	0.00	733.65
249	W_WADCG	183+78.32	0.00	733.33
250	N_WAD	131+90.85	0.00	734.13
251	W_WADCG	183+28.24	0.00	733.83
252	N_WAD	132+42.25	0.00	734.65
253	W_WADCG	182+81.24	0.00	734.36
254	N_WAD	132+63.65	0.00	734.84
255	W_WADCG	182+62.27	0.00	734.56
256	N_WAD	132+74.96	21.03	735.29
257	N_WAD	132+72.81	0.59	734.87
258	N_WAD	132+69.02	7.75	734.90
259	W_WADCG	182+13.74	21.00	735.86
260	W_WADCG	182+13.74	0.00	735.44
261	W_WADCG	181+56.41	21.00	736.44
262	W_WADCG	181+56.41	0.00	736.02
263	W_WADCG	181+05.84	23.09	737.01
264	W_WADCG	180+99.51	3.17	736.59
265	W_WADCG	180+98.40	0.00	736.53
266	S_WAD	32+99.14	13.76	736.32
267	S_WAD	33+06.01	0.00	736.14
268	W_WADCG	180+64.37	0.00	735.96
269	S_WAD	33+22.13	0.00	735.86
270	W_WADCG	180+48.69	0.00	735.70
271	S_WAD	33+33.78	0.00	735.15
272	W_WADCG	180+00.97	0.00	734.87
273	S_WAD	32+83.68	0.00	734.45
274	S_WAD	34+21.88	18.90	734.09



LEGEND:
 [HP] HIGH POINT ELEVATION OF INSCRIBED CIRCLE
 [LP] LOW POINT ELEVATION OF INSCRIBED CIRCLE

- NOTES:**
- REFER TO ROADWAY PLAN AND PROFILE SHEETS FOR PAVEMENT REFERENCE ELEVATIONS NOT SHOWN HERE AND VERTICAL CURVE INFORMATION OF PGL'S.
 - ROADWAY CROSS SLOPES OUTSIDE OF THE ROUNDABOUT INSCRIBED CIRCLE ARE PERPENDICULAR TO THE APPLICABLE PGL.
 - ROADWAY CROSS SLOPES FROM THE ROUNDABOUT INSCRIBED CIRCLE OUTWARD SHALL BE TRANSITIONED AT A CONSTANT RATE AS SHOWN ON THIS SHEET.
 - OUTER EDGES OF PAVEMENT ELEVATIONS OUTSIDE THE ROUNDABOUT INSCRIBED CIRCLE ARE PERPENDICULAR TO THE ELEVATIONS SHOWN ON THE PGL'S.
 - NEGATIVE OFFSETS INDICATE LEFT.
 - POSITIVE OFFSETS INDICATE RIGHT.



FILE NAME = ar\pa\1988-1999\1982-082\micro\Plan_Sheets\01-ht-intense.dgn