

GENERAL NOTES:

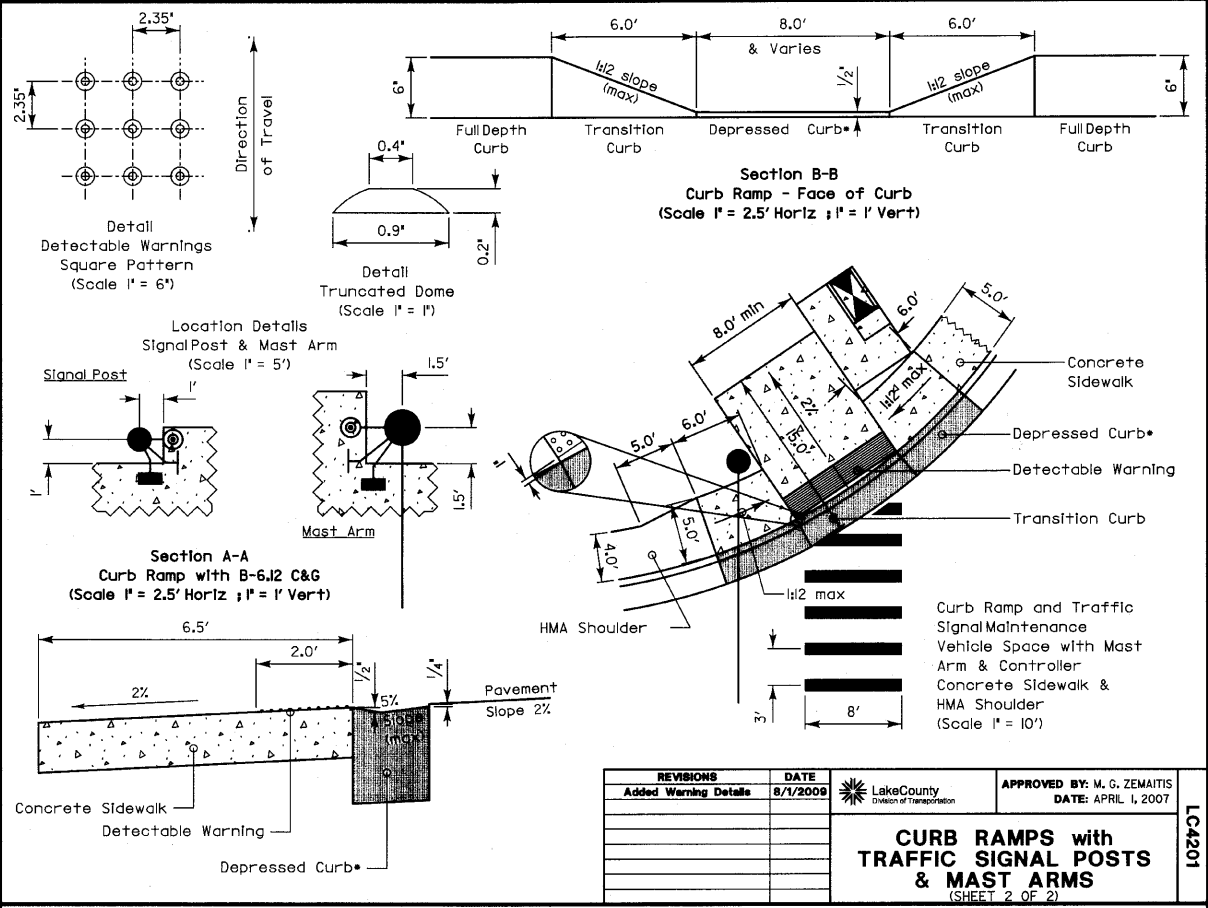
- The gutter slope for the DEPRESSED CURB adjacent to the curb ramp is a maximum of 5% (standard curb and gutter is 6%). The back of curb rise is 1/2" (standard depressed curb is 1/2"). See Section A-A (Sheet 2) and IDOT standard 606001 for the different curb dimensions.
- The Depressed Curb and the Transition Curb will be paid for as COMBINATION CONCRETE CURB AND GUTTER of the type adjacent to the curb ramp.
- The concrete area consisting of the landing (2% slope) and the side ramps (behind the transition curb) along with the continuation of the 5' concrete between adjacent ramps (if any) will be measured in square feet and paid for as PORTLAND CEMENT CONCRETE SIDEWALK of the thickness specified.
- The detectable warnings shall be installed in accordance with Article 424.09 of the IDOT Standard Specifications and the LCDOT specification 42400800 DETECTABLE WARNINGS and shall be measured and paid for per square foot.
- Since the width of the flag doesn't affect the construction of the ramp, both B-6J2 and B-6.24 Curb & Gutter are portrayed in this standard.

REVISIONS	DATE	APPROVED BY: M. G. ZEMAITIS
Added Warning Details	8/1/2008	DATE: APRIL 1, 2007

Lake County Division of Transportation

CURB RAMPS with TRAFFIC SIGNAL POSTS & MAST ARMS
(SHEET 1 OF 2)

LC4201

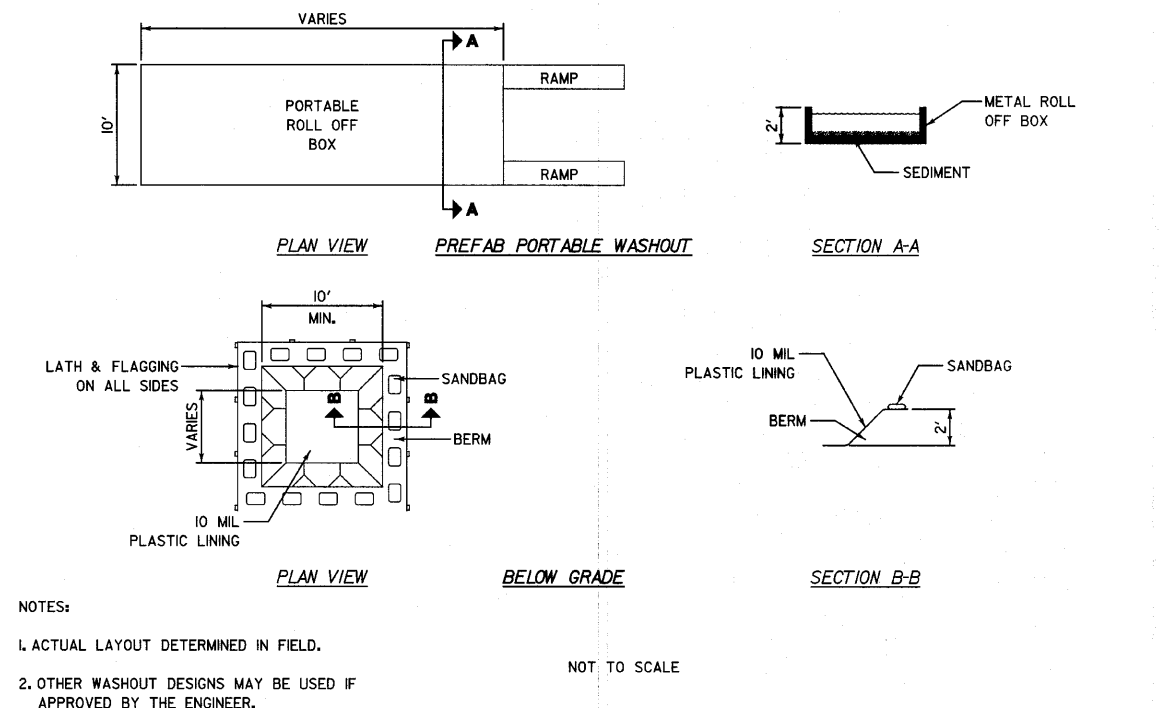


REVISIONS	DATE	APPROVED BY: M. G. ZEMAITIS
Added Warning Details	8/1/2008	DATE: APRIL 1, 2007

Lake County Division of Transportation

CURB RAMPS with TRAFFIC SIGNAL POSTS & MAST ARMS
(SHEET 2 OF 2)

LC4201



REVISIONS	DATE	APPROVED BY: MGZ
		DATE: March 17, 2008

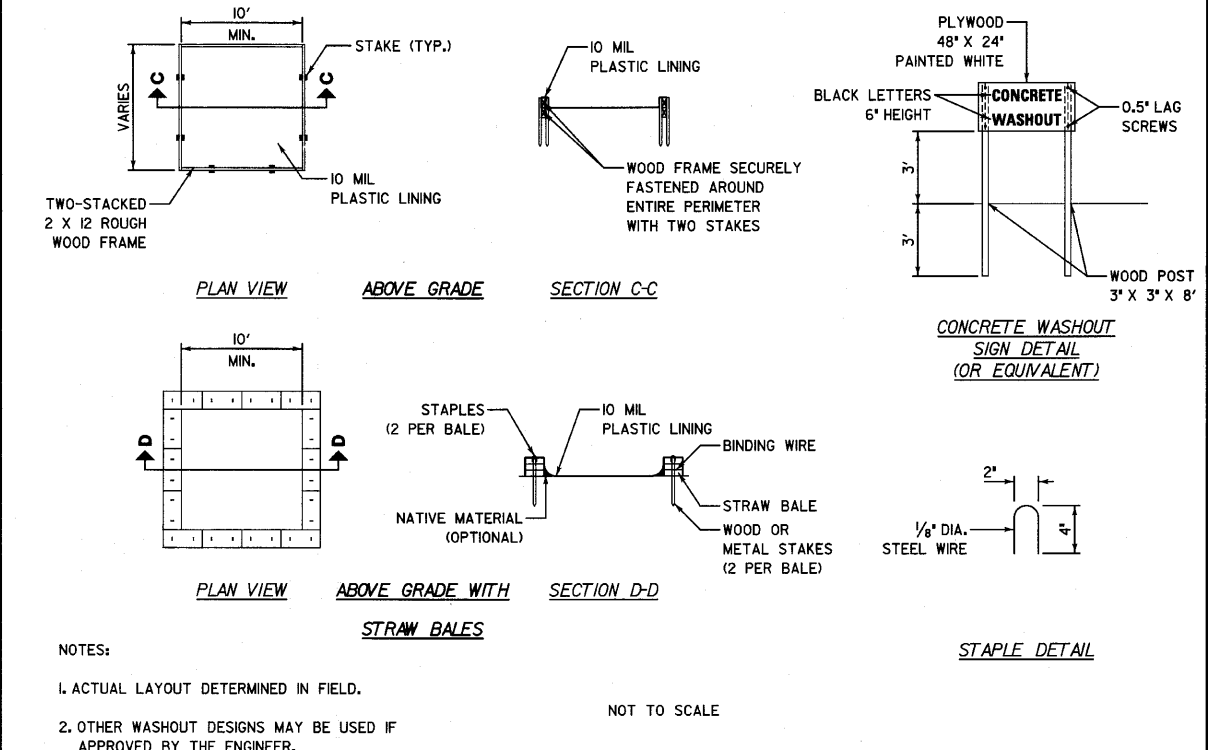
Lake County Division of Transportation

CONCRETE WASHOUT FACILITIES
(SHEET 1 OF 2)

LC4202

NOTES:

- ACTUAL LAYOUT DETERMINED IN FIELD.
- OTHER WASHOUT DESIGNS MAY BE USED IF APPROVED BY THE ENGINEER.
- THE CONCRETE WASHOUT SIGN SHALL BE INSTALLED WITHIN 30 FEET OF THE TEMPORARY CONCRETE WASHOUT FACILITY.



REVISIONS	DATE	APPROVED BY: MGZ
		DATE: March 17, 2008

Lake County Division of Transportation

CONCRETE WASHOUT FACILITIES
(SHEET 2 OF 2)

LC4202

NOTES:

- ACTUAL LAYOUT DETERMINED IN FIELD.
- OTHER WASHOUT DESIGNS MAY BE USED IF APPROVED BY THE ENGINEER.
- THE CONCRETE WASHOUT SIGN SHALL BE INSTALLED WITHIN 30 FEET OF THE TEMPORARY CONCRETE WASHOUT FACILITY.

FILE NAME = #FILE#



USER NAME = #USER#	DESIGNED - MAG	REVISED -
PLOT SCALE = #SCALE#	DRAWN - VLF	REVISED -
PLOT DATE = #DATE#	CHECKED - RKK	REVISED -
	DATE -	REVISED -

STATE OF ILLINOIS
DEPARTMENT OF TRANSPORTATION

LCDOT STANDARD DETAILS

SCALE: AS SHOWN SHEET NO. OF SHEETS STA. TO STA.

F.A. RTE. 266I	SECTION 02-00076-13-CH	COUNTY LAKE	TOTAL SHEETS 177	SHEET NO. 106
CONTRACT NO. 63457				