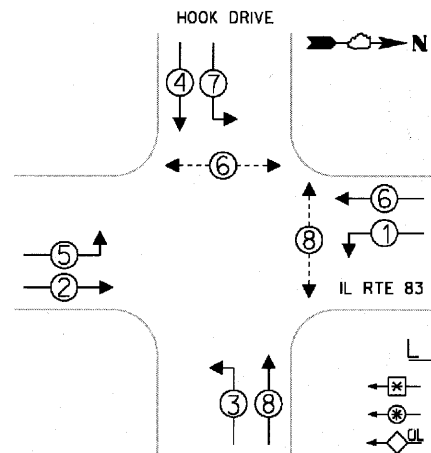


CONTROLLER SEQUENCE

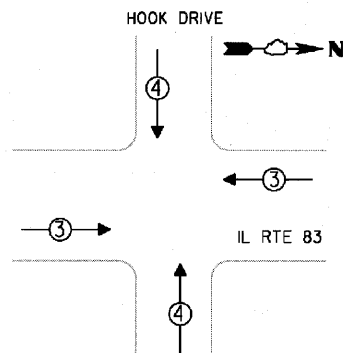


LEGEND

- ◀ ⊠ ▶ SINGLE ENTRY PHASE
- ◀ ⊕ ▶ DUAL ENTRY PHASE
- ◀ ⊕ ▶ OVERLAP
- ◀ ⊕ ▶ PEDESTRIAN PHASE
- * NUMBER REFERS TO ASSOCIATED PHASE.

PHASE DESIGNATION DIAGRAM

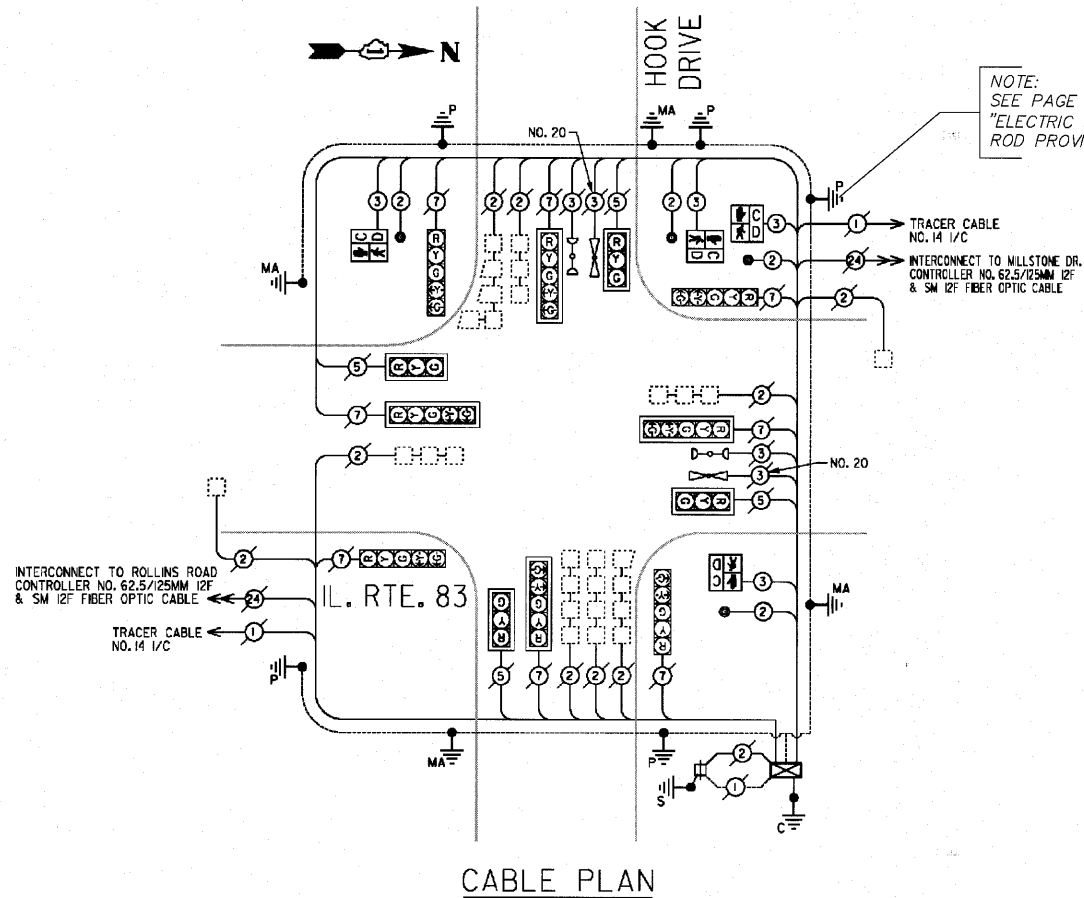
EMERGENCY VEHICLE PREEMPTION SEQUENCE



PROPOSED EMERGENCY VEHICLE PREEMPTORS

EMERGENCY VEHICLE PREEMPTOR	3	4
MOVEMENT	↔	↕

I.D.O.T. TRAFFIC SIGNAL INSTALLATION ELECTRICAL SERVICE REQUIREMENTS					TOTAL WATTAGE
TYPE	NO. OF LAMPS	INCAND	LED % OPERATIONS		
SIGNAL (RED)	12	135	17	0.50	102.00
(YELLOW)	12	135	25	0.25	75.00
(GREEN)	12	135	15	0.25	45.00
ARROW	16	135	12	0.10	19.20
PED. SIGNAL	4	90	25	1.00	100.00
CONTROLLER	1	100	100	1.00	100.00
ILLUM. SIGN		84	25	0.05	
FLASHER				0.50	
ENERGY COSTS TO:					TOTAL = 441.20
ILLINOIS DEPARTMENT OF TRANSPORTATION 201 WEST CENTER COURT SCHAUMBURG, ILLINOIS 60196					
ENERGY SUPPLY - CONTACT: ROBERT KOLLAR PHONE: (630) 576-8158 COMPANY: COMED					



NOTE:
SEE PAGE 23 OF THE SPECIAL PROVISIONS
"ELECTRIC SERVICE INSTALLATION" FOR GROUNDING
ROD PROVISIONS AND METHOD OF PAYMENT.

SCHEDULE OF QUANTITIES

QTY	UNIT	ITEM DESCRIPTION
9	FOOT	CONDUIT PUSHED, 2 1/2" DIA., GALVANIZED STEEL
1	EACH	MAINTENANCE OF EXISTING TRAFFIC SIGNAL INSTALLATION
685	FOOT	ELECTRIC CABLE IN CONDUIT, SIGNAL NO. 14 2C
713	FOOT	ELECTRIC CABLE IN CONDUIT, SIGNAL NO. 14 3C
1	EACH	TRAFFIC SIGNAL POST, GALVANIZED STEEL 10 FT.
4	FOOT	CONCRETE FOUNDATION, TYPE A
1	EACH	DRILL EXISTING HANDHOLE
4	EACH	PEDESTRIAN SIGNAL HEAD, LED, 1-FACE, BRACKET MOUNTED WITH COUNTDOWN TIMER
4	EACH	PEDESTRIAN PUSH-BUTTON
1	EACH	RE-OPTIMIZE TRAFFIC SIGNAL SYSTEM-LEVEL 1



METRO TRANSPORTATION GROUP, INC.
 TRAFFIC ENGINEERING
 TRANSPORTATION PLANNING/ENGINEERING
 SIGNAL SYSTEMS/DESIGN
 3100 W. HIGGINS ROAD, STE. 100
 HOFFMAN ESTATES, IL 60169-2093
 PH: 630.213.1000, FAX: 630.213.3227
 www.metrotransportation.com

FILE NAME = 102589METRO6.DWG	USER NAME =	DESIGNED -- RJD	REVISED -- 06/29/10
	FILE NAME =	DRAWN -- EC	REVISED --
	PLOT SCALE =	CHECKED -- RJD	REVISED --
	PLOT DATE =	DATE -- 01/19/10	REVISED --

**STATE OF ILLINOIS
DEPARTMENT OF TRANSPORTATION**

**TRAFFIC SIGNAL MODIFICATION
PLAN**

SCALE: N.T.S. SHEET NO. 30 OF 75 SHEETS

F.A. RTE.	SECTION	COUNTY	TOTAL SHEETS	SHEET NO.
---	10-00073-00-SW	LAKE	75	30
				CONTRACT NO. 63467
ILLINOIS FED. AID PROJECT				