

PLAN	DESIGNED	DATE
	CHECKED	
	PLATTED	
	ALIGNMENT CHECKED	
	GRADES CHECKED	
	STRUCTURE NOTATIONS CHECKED	
	NOTE BOOK NO.	
	FILE NAME	

PROFILE	DESIGNED	DATE
	CHECKED	
	PLATTED	
	GRADES CHECKED	
	STRUCTURE NOTATIONS CHECKED	
	NOTE BOOK NO.	
	FILE NAME	

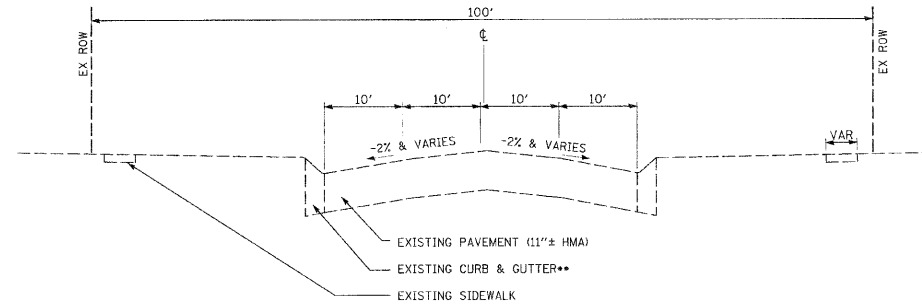
SUPPLEMENTAL LEGEND
SEE IDOT HIGHWAY STANDARDS FOR ADDITIONAL INFORMATION

- 211 STREET ADDRESS
- TUD TELEPHONE CABLE (TUC) OR DUCT (TUD)
- SL EXISTING STREET LIGHTING CABLE
- PROPOSED STREET LIGHTING OR TRAFFIC SIGNAL CABLE
- ===== EXISTING CURB OR CURB & GUTTER
- ===== PROPOSED CURB OR CURB & GUTTER
- [Hatched Box] EXISTING CURB, CURB & GUTTER, DRIVEWAY PAVEMENT AND SIDEWALK TO BE REMOVED
- [Hatched Box] EXISTING CURB, CURB & GUTTER, DRIVEWAY PAVEMENT AND SIDEWALK TO BE REPLACED
- [Cross-hatched Box] CLASS D PATCHES
- [Dotted Box] HOT-MIX ASPHALT SURFACE REMOVAL

STRUCTURE ADJUSTMENT/RECONSTRUCTION/REMOVAL NOTATION

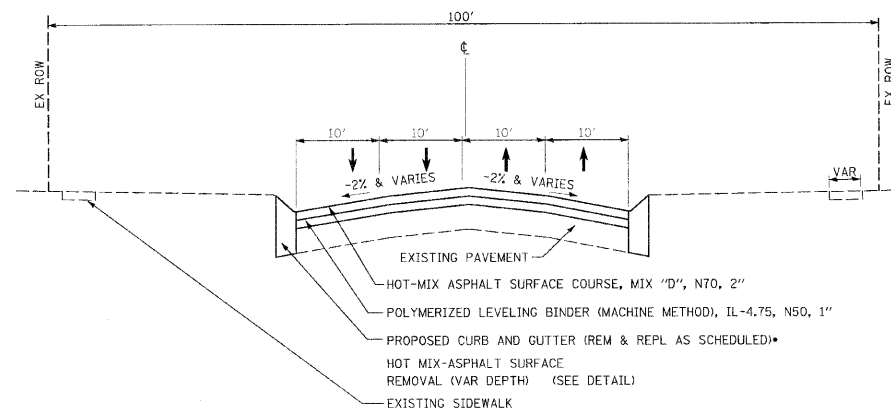
"A" FOR ADJUST "C" FOR CLOSED
"R" FOR RECONSTRUCT "P" FOR OPEN

- FRAME & GRATE/LID TYPE
- [Symbol] DENOTES STRUCTURE TO BE REMOVED
 - [Symbol] DENOTES STRUCTURE TO BE FILLED



** NORTH OF WEATHERSFIELD WAY, TYPE M-3.12
SOUTH OF WEATHERSFIELD WAY, TYPE B-6.12

EXISTING TYPICAL SECTION
SPRINGSGUTH ROAD
STA 1+00 TO 80+00



* NORTH OF WEATHERSFIELD WAY, TYPE B (MODIFIED)
SOUTH OF WEATHERSFIELD WAY, TYPE B-6.12

PROPOSED TYPICAL SECTION
SPRINGSGUTH ROAD
STA 5+63 TO 76+40

CONTRACTOR SHALL MILL BEFORE PATCHING

HOT-MIX ASPHALT MIXTURE REQUIREMENTS	
MIXTURE TYPE	AIR VOIDS
PAVEMENT RESURFACING	
HOT-MIX ASPHALT SURFACE COURSE, MIX "D", N70; 2" (IL 9.5mm)	4% @ 70 GYR.
POLYMERIZED LEVELING BINDER (MACHINE METHOD), IL-4.75, N50; 1"	4% @ 50 GYR.
DRIVEWAY	
HOT-MIX ASPHALT SURFACE COURSE, MIX "C", N50 (IL 9.5mm)	4% @ 50 GYR.
PATCHING	
CLASS D PATCHES (HMA BINDER IL-19mm)	4% @ 70 GYR.

THE UNIT WEIGHT USED TO CALCULATE ALL HMA SURFACE MIXTURE QUANTITIES IS 112 LBS/SQ YD/IN.

THE "AC TYPE" FOR POLYMERIZED HMA MIXES SHALL BE SBS/SBR PG 70-22 AND FOR NON-POLYMERIZED HMA THE "AC TYPE" SHALL BE "PG 64-22 UNLESS MODIFIED BY DISTRICT ONE SPECIAL PROVISIONS. FOR "PERCENT OF RAPP" SEE DISTRICT ONE SPECIAL PROVISIONS.

FILE NAME =	USER NAME =	DESIGNED --	REVISED --	STATE OF ILLINOIS DEPARTMENT OF TRANSPORTATION		SPRINGSGUTH ROAD IMPROVEMENTS TYPICAL SECTIONS	F.A. U. RTE.	SECTION	COUNTY	TOTAL SHEETS	SHEET NO.
		DRAWN --	REVISED --				2562	10-00104-00-RS	COOK	21	3
PLOT SCALE =		CHECKED --	REVISED --				SPRINGSGUTH ROAD				CONTRACT NO. 63500
PLOT DATE =		DATE --	REVISED --				FED. ROAD DIST. NO. 1	ILLINOIS	FED. AID PROJECT M-90637031		

SCALE: N.T.S. SHEET NO. 1 OF 1 SHEETS | STA. TO STA.