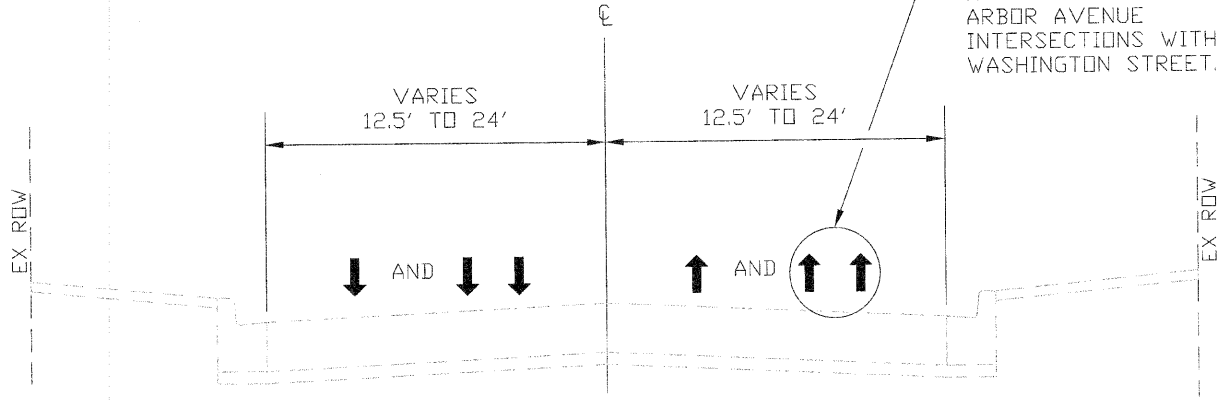
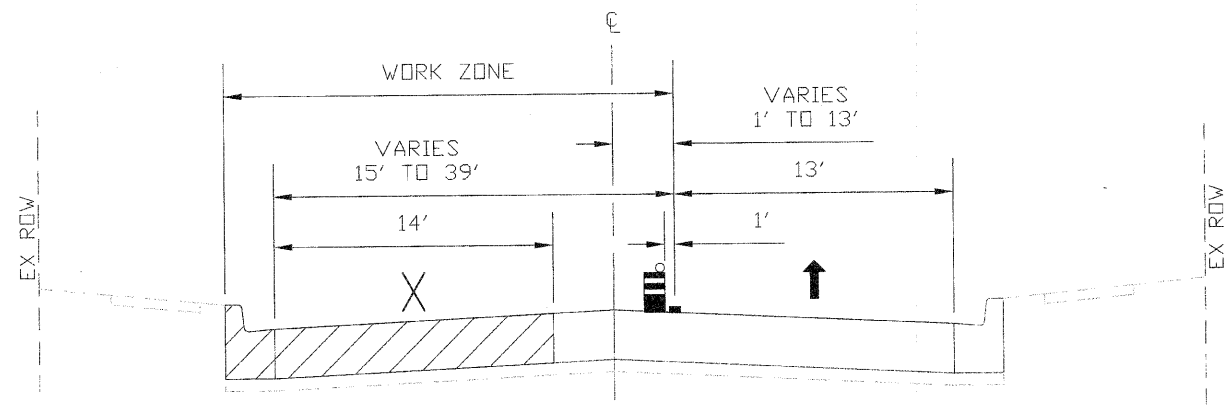


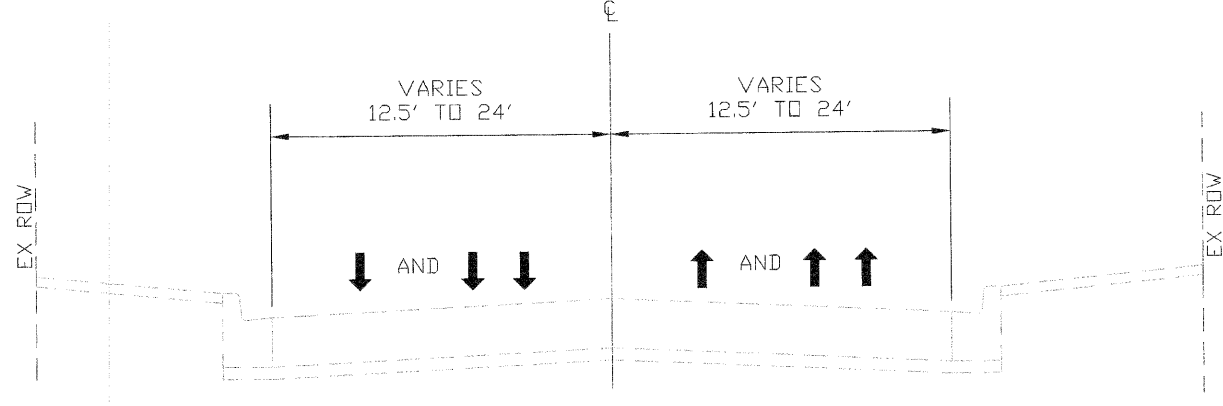
STAGE 1
STA. 18+93 TO STA. 85+50, WASHINGTON STREET



STAGE 1
STA. 85+50 TO STA. 100+60, WASHINGTON STREET
(PAVEMENT RESTORATION OMISSION)



STAGE 2
STA. 18+93 TO STA. 85+50, WASHINGTON STREET



STAGE 2
STA. 85+50 TO STA. 100+60, WASHINGTON STREET
(PAVEMENT RESTORATION OMISSION)

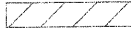
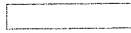





STAGE 1 AND STAGE 2 SEQUENCE OF CONSTRUCTION:

1. PERFORM FULL-DEPTH SAWCUTTING
2. CONSTRUCT INTERMITTENT COMBINATION CURB AND GUTTER REPLACEMENTS
3. CONSTRUCT CLASS B PATCHES
4. CONSTRUCT LOAD TRANSFER RESTORATION
5. CONSTRUCT PARTIAL DEPTH PATCHES
6. ALLOW CONCRETE PAVEMENT RECONSTRUCTION TREATMENTS TO CURE
7. PERFORM PROFILE DIAMOND GRINDING
8. PERFORM JOINT OR CRACK ROUTING AND FILLING
9. APPLY PROTECTIVE COAT
10. INSTALL FINAL PAVEMENT MARKINGS

NOTE:

THE WORK ZONE WILL BE DELINEATED AT ALL TIMES THROUGHOUT CONSTRUCTION BY 4" TEMPORARY YELLOW PAVEMENT MARKING LINES AND TYPE II BARRICADES OR DRUMS. BARRICADES THAT MUST BE PLACED IN EXCAVATED AREAS SHALL HAVE LEG EXTENSIONS INSTALLED SUCH THAT THE TOP OF THE BARRICADES ARE IN COMPLIANCE WITH THE HEIGHT REQUIREMENTS OF STANDARD 701901.

LEGEND

-  CURRENT STAGE OF CONSTRUCTION
-  PREVIOUS STAGE OF CONSTRUCTION
-  DIRECTION OF TRAFFIC
-  CLOSED TO TRAFFIC
-  TEMPORARY PAVEMENT MARKING - LINE 4" (YELLOW)
-  PAVEMENT MARKING TAPE, TYPE III 4" (YELLOW)
-  TYPE II BARRICADES OR DRUMS WITH STEADY BURNING LIGHT @ 50' CENTERS UNLESS OTHERWISE SHOWN

FILE NAME = 22-23_MOT Typ Sections_Washington
PLOT DATE = 8/2/10

thomas
engineering group
division of the highest grade

thomas engineering group, llc
238 south keelworth avenue
suite 150
oak park, il 60302
phone: 708-533-1790

DESIGNED - BLP	REVISED -
DRAWN - JBH	REVISED -
CHECKED - KCV	REVISED -
DATE - 08/02/10	REVISED -

STATE OF ILLINOIS
DEPARTMENT OF TRANSPORTATION

WASHINGTON STREET - IL RTE 38 TO IL RTE 59
MAINTENANCE OF TRAFFIC TYPICAL SECTIONS

SCALE: N.T.S.

F.A.U. RTE. 1397	SECTION 09-00076-00-RP	COUNTY DUPAGE	TOTAL SHEETS 61	SHEET NO. 22
CONTRACT NO. 63513				
FED. ROAD DIST. NO. 1 ILLINOIS FED. AID PROJECT M-9003(707)				