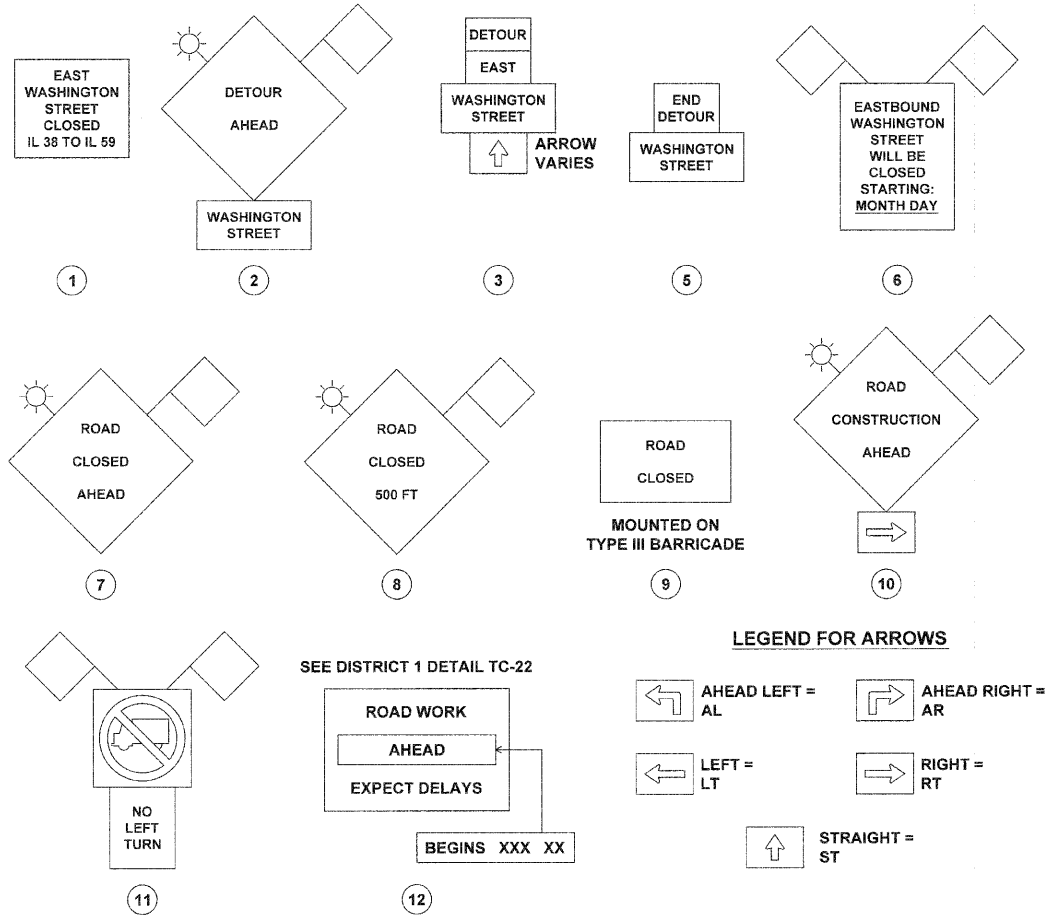
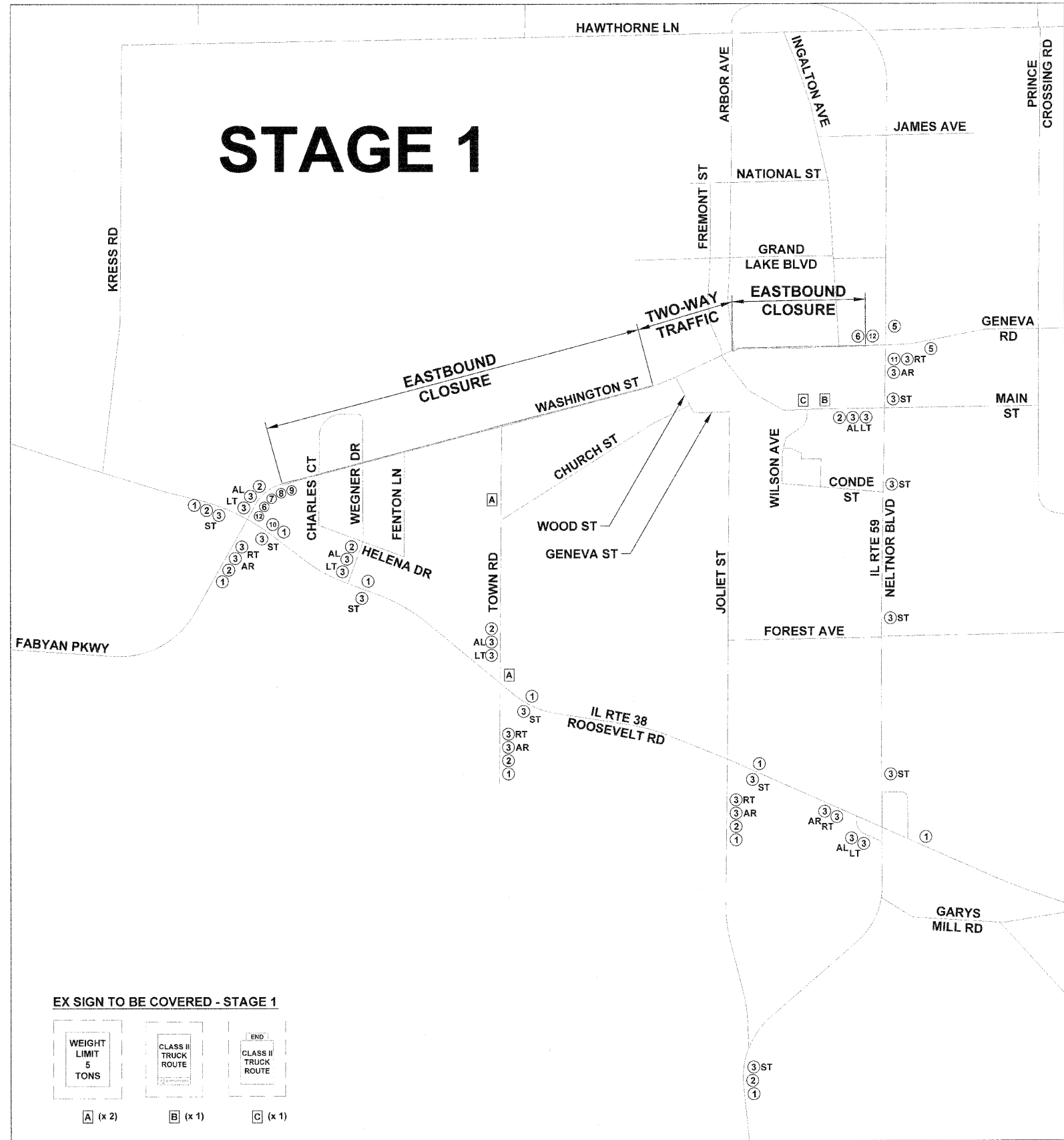


**SIGN LEGEND FOR DETOUR PLAN - STAGE 1**

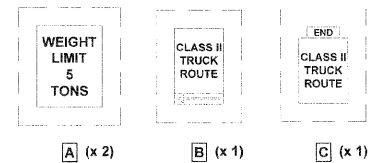


**NOTES:**

- DURING STAGE 1, EASTBOUND WASHINGTON STREET IS CLOSED.
- SIGN NUMBER 6 SHALL BE ERECTED AT LEAST 10 DAYS PRIOR TO THE CLOSURE OF THE ROAD AND SHALL BE REMOVED WHEN THE DETOUR ROUTE IS IN OPERATION. THE COST SHALL BE INCLUDED IN THE CONTRACT UNIT PRICE FOR TRAFFIC CONTROL AND PROTECTION FOR TEMPORARY DETOUR.
- SEE MAINTENANCE OF TRAFFIC PLAN SHEETS FOR THE APPROPRIATE STAGE FOR TEMPORARY TRAFFIC CONTROL DEVICES, PAVEMENT MARKINGS, AND SIGNING ON WASHINGTON STREET (I.E. WITHIN THE WORK ZONE) AND ITS SIDE STREETS.
- SEE DISTRICT 1 DETAILS AND IDOT STATEWIDE STANDARDS FOR ADDITIONAL INFORMATION ON SIGN PLACEMENT AND SPACING.



**EX SIGN TO BE COVERED - STAGE 1**



FILE NAME = 24-49\_MOT Detour and Plan Sheets, Washington  
 PLOT DATE = 08/02/10

**thomas** engineering group  
 thomas engineering group, llc  
 238 south kenilworth avenue  
 suite 100  
 oak park, il 60362  
 phone: 708-533-1700

DESIGNED - BLP	REVISED -
DRAWN - BLP	REVISED -
CHECKED - KCV	REVISED -
DATE - 08/02/10	REVISED -

STATE OF ILLINOIS  
 DEPARTMENT OF TRANSPORTATION

WASHINGTON STREET - IL RTE 38 TO IL RTE 59  
 MAINTENANCE OF TRAFFIC DETOUR PLAN SHEET - STAGE 1  
 SCALE: N.T.S.

F.A.U. RTE. 1397	SECTION 09-0076-00-RP	COUNTY DUPAGE	TOTAL SHEETS 61	SHEET NO. 24
CONTRACT NO. 63513				
FED. ROAD DIST. NO. 1 ILLINOIS FED. AID PROJECT M-6003(707)				