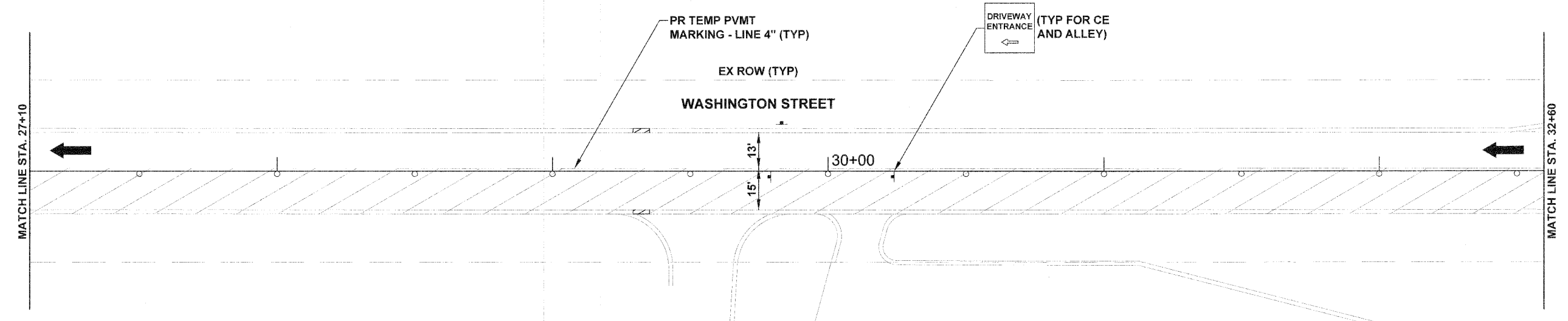
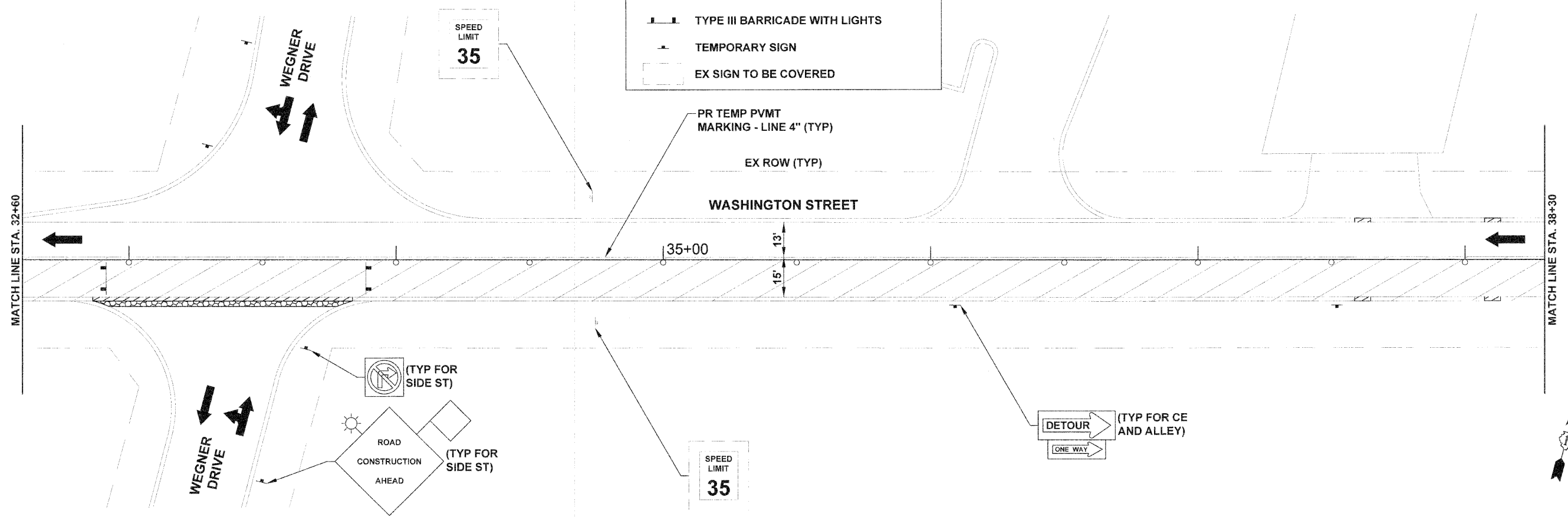


- NOTES:**
1. THE CITY OF WEST CHICAGO WILL PROVIDE AND ERECT FIVE WORK ZONE SPEED LIMIT (25 MPH) SIGN ASSEMBLIES.
 2. SEE DISTRICT 1 DETAILS AND IDOT STATEWIDE STANDARDS FOR ADDITIONAL INFORMATION ON SIGN PLACEMENT AND SPACING.



LEGEND:

- WORK ZONE
- TRAFFIC FLOW
- TYPE II BARRICADE OR DRUM WITH LIGHTS
- TYPE III BARRICADE WITH LIGHTS
- TEMPORARY SIGN
- EX SIGN TO BE COVERED



FILE NAME = 24-49_MOT Detour and Plan Sheets_Washington
 PLOT DATE = 8/2/10

thomas
 engineering group
 thomas engineering group, llc
 238 south kenilworth avenue
 suite 100
 oak park, il 60362
 phone: 708-633-1700

DESIGNED -	BLP	REVISED -	
DRAWN -	BLP	REVISED -	
CHECKED -	KCV	REVISED -	
DATE -	08/02/10	REVISED -	

STATE OF ILLINOIS
 DEPARTMENT OF TRANSPORTATION

WASHINGTON STREET - IL RTE 38 TO IL RTE 59
 MAINTENANCE OF TRAFFIC PLAN SHEET - STAGE 1
 SCALE: 1" = 20'
 STA. 27+10 TO STA. 38+30

F.A.U. RTE.	SECTION	COUNTY	TOTAL SHEETS	SHEET NO.
1397	09-00076-00-RP	DUPAGE	61	28
CONTRACT NO. 63513				
FED. ROAD DIST. NO. 1 ILLINOIS FED. AID PROJECT M-6003(707)				