

McHENRY COUNTY
DIVISION OF TRANSPORTATION

NORTH EDGE OF SHOULDER

Location	Station	Offset	Theoretical Grade Elevations
W. End East Appr. Slab	510+58.40	20 Lt.	875.70
A3	510+68.40	20 Lt.	875.65
A4	510+78.40	20 Lt.	875.60
E. End East Appr. Slab	510+88.40	20 Lt.	875.55

NORTH EDGE OF PAVEMENT

Location	Station	Offset	Theoretical Grade Elevations
W. End East Appr. Slab	510+53.78	12 Lt.	875.88
A3	510+63.78	12 Lt.	875.84
A4	510+73.78	12 Lt.	875.79
E. End East Appr. Slab	510+83.78	12 Lt.	875.74

☉ ROADWAY AND PROFILE GRADE

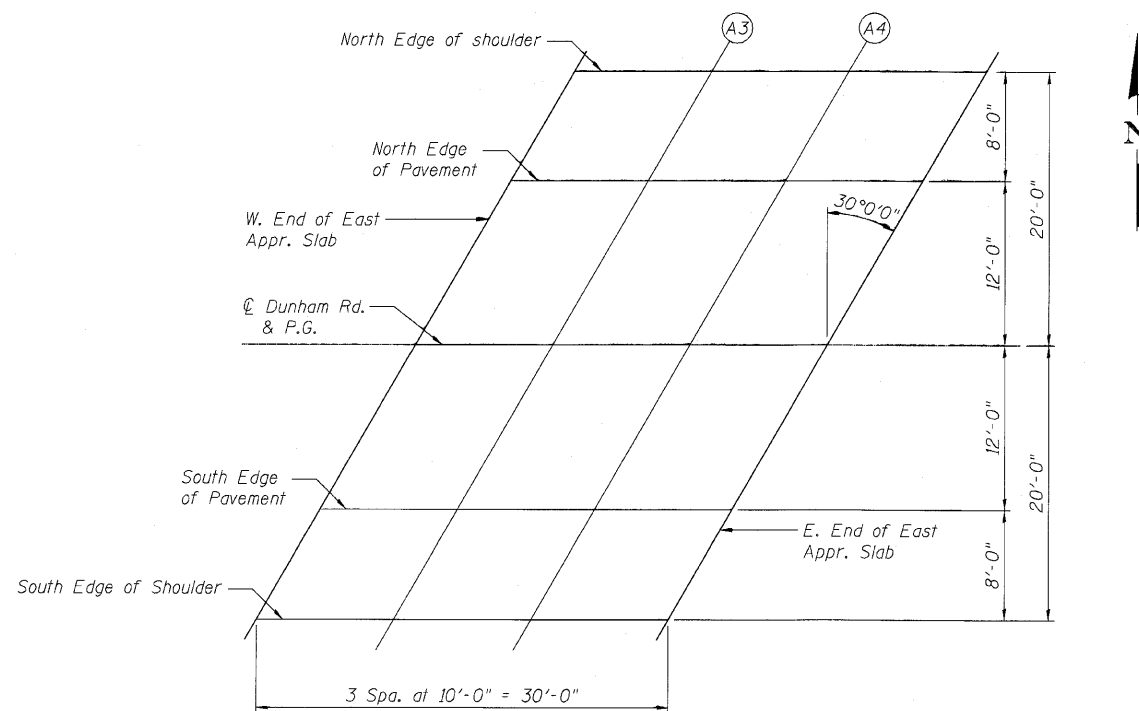
Location	Station	Offset	Theoretical Grade Elevations
W. End East Appr. Slab	510+46.85	0.00	876.10
A3	510+56.85	0.00	876.06
A4	510+66.85	0.00	876.02
E. End East Appr. Slab	510+76.85	0.00	875.97

SOUTH EDGE OF PAVEMENT

Location	Station	Offset	Theoretical Grade Elevations
W. End East Appr. Slab	510+39.92	12 Rt.	875.93
A3	510+49.92	12 Rt.	875.90
A4	510+59.92	12 Rt.	875.86
E. End East Appr. Slab	510+69.92	12 Rt.	875.81

SOUTH EDGE OF SHOULDER

Location	Station	Offset	Theoretical Grade Elevations
W. End East Appr. Slab	510+35.30	20 Rt.	875.78
A3	510+45.30	20 Rt.	875.75
A4	510+55.30	20 Rt.	875.71
E. End East Appr. Slab	510+65.30	20 Rt.	875.67



PLAN
East Approach

TOP OF EAST APPROACH
SLAB ELEVATIONS
STRUCTURE NO. 056-3179

DESIGNED - AMK
CHECKED - EKM
DRAWN - SAT
CHECKED - EKM



Ciorba Group, Inc.
CONSULTING ENGINEERS
5507 North Cumberland Avenue, Suite 402 Chicago, Illinois 60656
Tel. 773.775.4009 Fax 773.775.4014 Email chicago@ciorba.com

SHEET NO.	F.A.S. RTE.	SECTION	COUNTY	TOTAL SHEETS	SHEET NO.
S-6	1233	06-00321-00-BR	McHENRY	48	24
S-21 SHEETS			CONTRACT NO. 63516		
ILLINOIS FED. AID PROJECT					

rdm/ley

8/2/2010

ns:\proj\3381\3381.01_kish\design\structural\road\3381.01_06_Top_of_East_Approach_Slab_Elevations.dgn