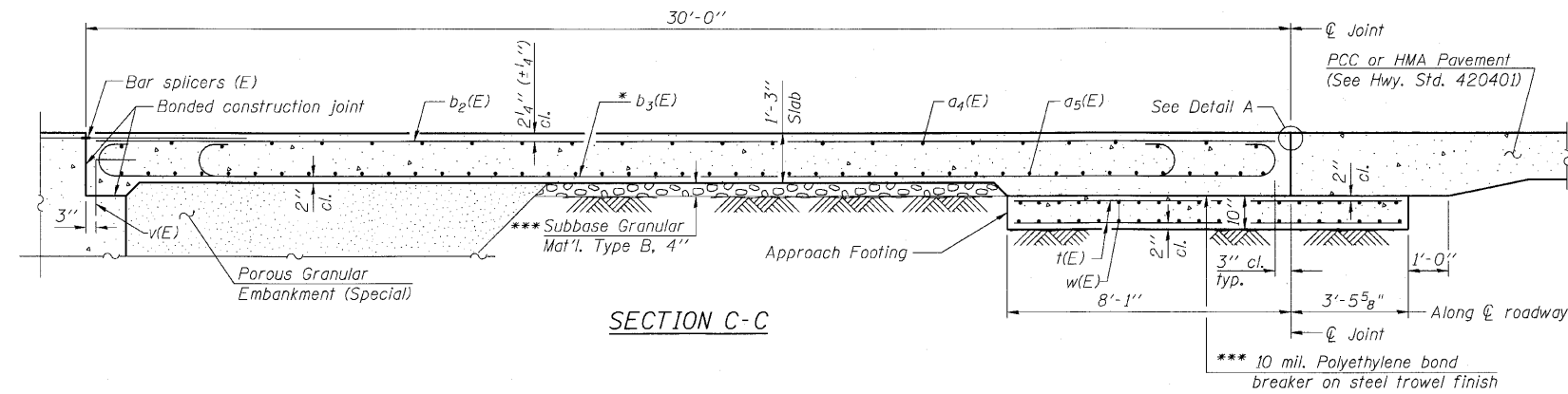
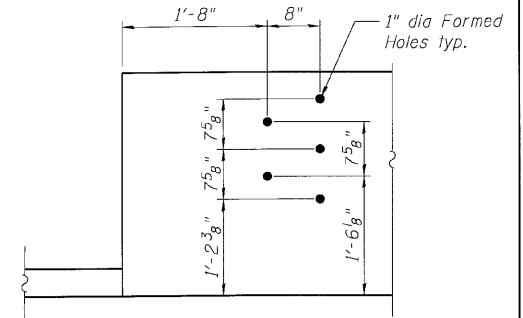
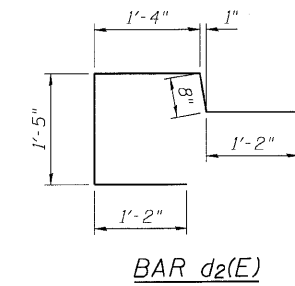
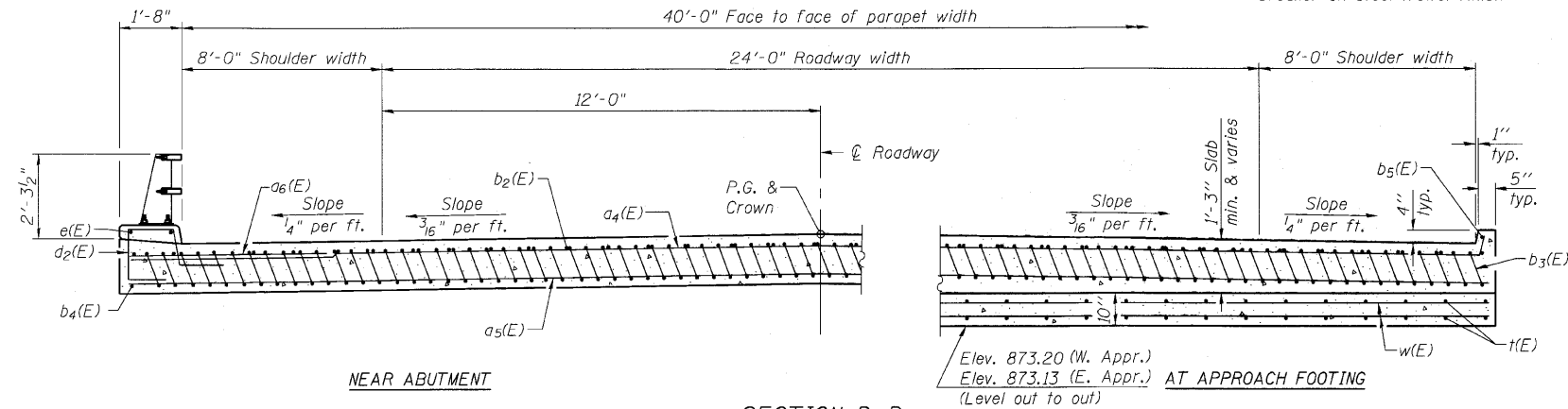


McHENRY COUNTY  
DIVISION OF TRANSPORTATION



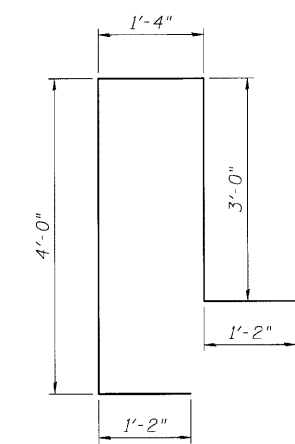
Notes:  
See sheet S-9 for Detail A and View B-B.  
Approach slab and concrete curb shall be paid for as Concrete Superstructure.  
Approach footing concrete shall be paid for as Concrete Structures.  
Reinforcement shall be paid for as Reinforcement Bars, Epoxy Coated.  
For v(E) bar details, see sheet S-8.  
The approach footing maximum applied service bearing pressure (Qmax) = 2.0 ksf.  
For bar splicer details, see sheet S-18.  
Cost of excavation for approach footing included with Concrete Structures.  
For Porous Granular Embankment (Special) and drainage treatment details, see sheet S-16.  
For additional curb details, see sheet S-9.



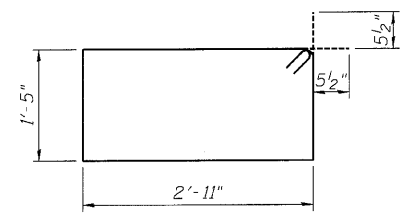
DETAIL "A"

TWO APPROACHES  
BILL OF MATERIAL

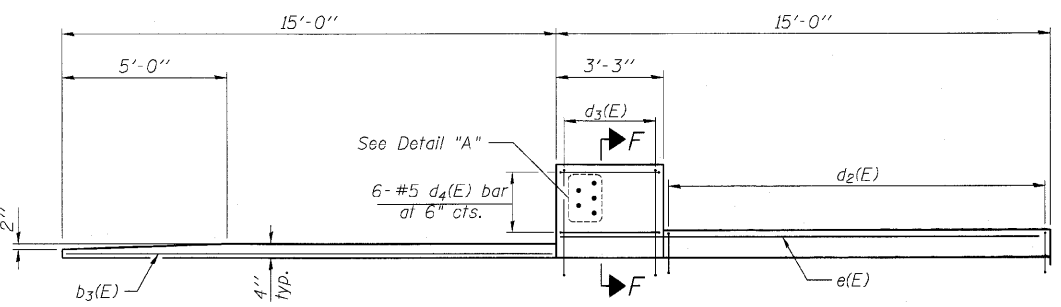
Bar	No.	Size	Length	Shape
a4(E)	50	#4	47'-3"	┌───┐
a5(E)	92	#5	46'-11"	┌───┐
a6(E)	48	#6	6'-6"	┌───┐
b2(E)	66	#4	29'-8"	┌───┐
b3(E)	198	#9	29'-9"	┌───┐
b4(E)	4	#4	14'-8"	┌───┐
b5(E)	4	#4	13'-8"	┌───┐
d2(E)	52	#5	5'-9"	┌──┐
d3(E)	28	#5	10'-8"	┌──┐
d4(E)	24	#5	9'-7"	┌──┐
e(E)	8	#4	14'-8"	┌───┐
f(E)	84	#4	11'-1"	┌───┐
w(E)	80	#5	25'-2"	┌───┐
Concrete Superstructure		Cu. Yd.	127.2	
Concrete Structures		Cu. Yd.	29.2	
Reinforcement Bars, Epoxy Coated		Pound	31,630	



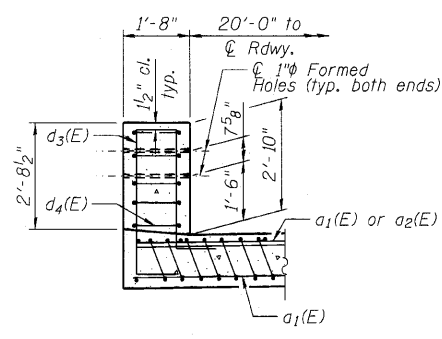
BAR d3(E)



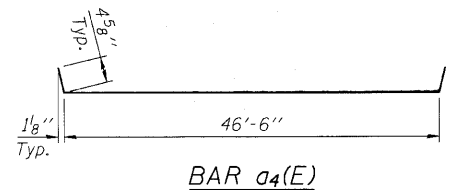
BAR d4(E)



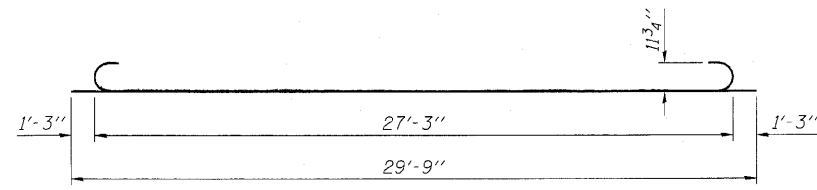
VIEW E-E



SECTION F-F



BAR a4(E)



BAR b3(E)

DESIGNED -	AMK
CHECKED -	EKM
DRAWN -	SAT
CHECKED -	EKM

**CG** Ciorba Group, Inc.  
CONSULTING ENGINEERS  
5507 North Cumberland Avenue, Suite 402 Chicago, Illinois 60656  
Tel. 773.775.4009 Fax 773.775.4014 Email chicago@ciorba.com

BRIDGE APPROACH SLAB DETAILS 2  
STRUCTURE NO. 056-3179

SHEET NO. S-10	F.A.S. RTE.	SECTION	COUNTY	TOTAL SHEETS	SHEET NO.
S-21 SHEETS	1233	06-00321-00-BR	McHENRY	48	28
			CONTRACT NO. 63516		
ILLINOIS FED. AID PROJECT					

rdantley  
 8/2/2010  
 n:\proj\3381\3381\_01\_ash\design\structural\load\3381\_01\_10\_Bridge Approach Slab Details 2.dgn