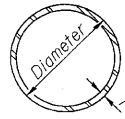
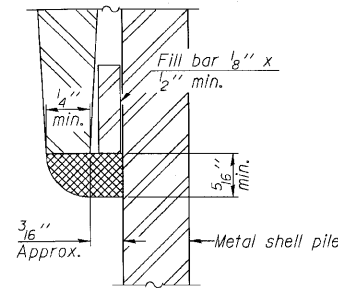


McHENRY COUNTY
DIVISION OF TRANSPORTATION

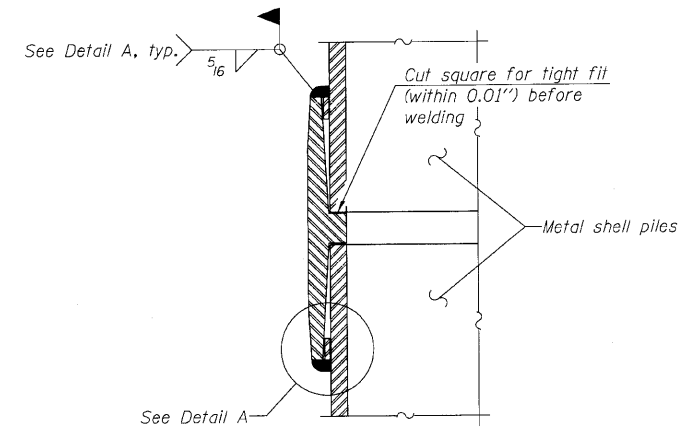


METAL SHELL PILE TABLE

Designation and outside diameter	Wall thickness t	Weight per foot (Lbs./ft.)	Inside volume (yd. ³ /ft.)
PP12	0.179"	22.60	0.0274
PP12	0.250"	31.37	0.0267
PP14	0.250"	36.71	0.0368
PP14	0.312"	45.61	0.0361

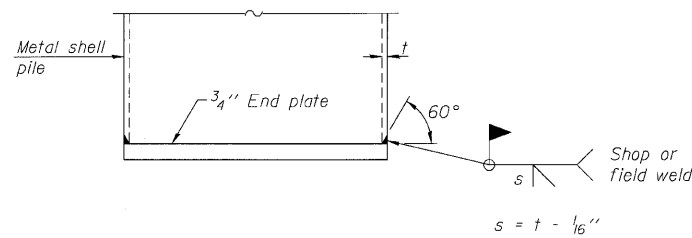


DETAIL A



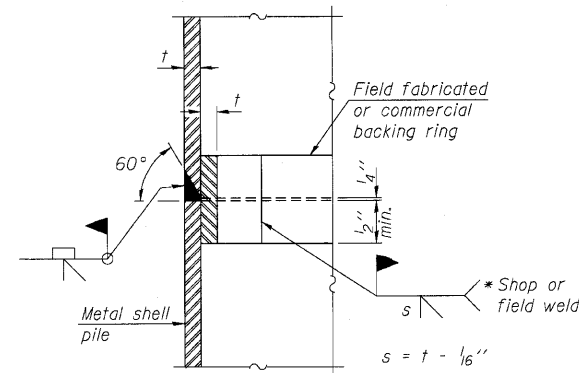
Notes:
The 1/8" x 1/2" min. fill bar may be constructed of 2 bars with a 1/8" max. gap between them.
Pile segments shall be driven to solid contact with splicer before welding.

WELDED COMMERCIAL SPLICE



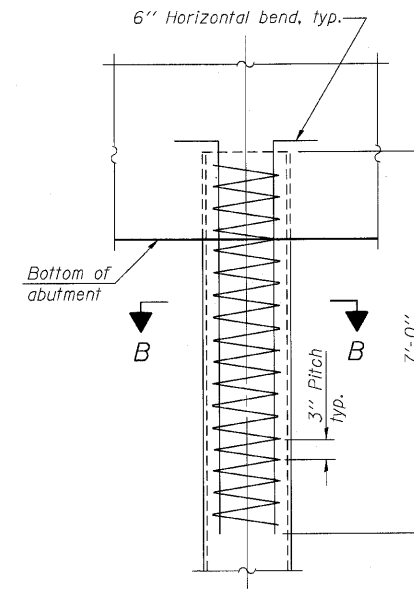
END PLATE ATTACHMENT

Cost included in Furnishing Metal Shell Piles

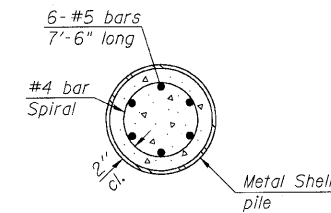


COMPLETE PENETRATION WELD SPLICE

* Field fabricated backing ring may be made from pile shell by removing segment to allow reducing circumference and vertically rejoin with partial joint penetration weld.



ELEVATION



SECTION B-B

METAL SHELL REINFORCEMENT AT ABUTMENTS

METAL SHELL PILE DETAILS
STRUCTURE NO. 056-3179

DESIGNED -	AMK
CHECKED -	EKM
DRAWN -	RD
CHECKED -	EKM



Giorba Group, Inc.
CONSULTING ENGINEERS
5507 North Cumberland Avenue, Suite 402 Chicago, Illinois 60656
Tel. 773.775.4009 Fax 773.775.4014 Email chicago@giorba.com

Note:
The metal shell piles shall be according to ASTM A 252 Grade 3.

SHEET NO. S-17	F.A.S. RTE.	SECTION	COUNTY	TOTAL SHEETS	SHEET NO.
S-21 SHEETS	1233	06-00321-00-BR	McHENRY	48	35
			CONTRACT NO. 63516		
ILLINOIS FED. AID PROJECT					

rdanlej

8/2/2010

m:\p\03\3381\3381.dgn\design\structural\cad\3381_01.17_Metal_Shell_Pile_Details.dgn