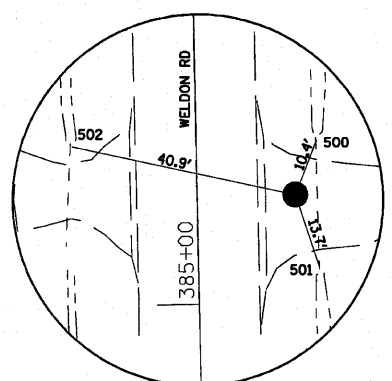


Chain WELDON contains:  
1030 2598 2609 1021 1022 1029

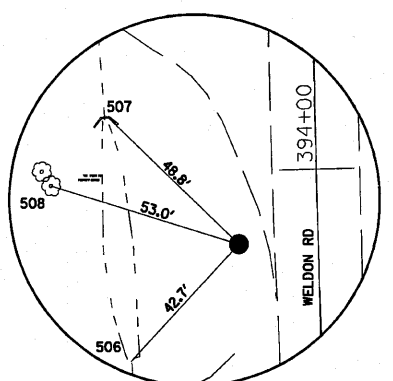
Beginning chain WELDON description

Point 1030 N 2,043,712.9973 E 2,560,150.1533 Sta 383+94.52  
 Course from 1030 to 2598 358° 47' 39.18" Dist 878.0208'  
 Point 2598 N 2,044,590.8236 E 2,560,131.6768 Sta 392+72.54  
 Course from 2598 to 2609 358° 36' 13.59" Dist 220.4808'  
 Point 2609 N 2,044,811.2389 E 2,560,126.3045 Sta 394+93.02  
 Course from 2609 to 1021 358° 30' 17.55" Dist 375.0245'  
 Point 1021 N 2,045,186.1358 E 2,560,116.5194 Sta 398+68.04  
 Course from 1021 to 1022 358° 45' 37.25" Dist 259.7535'  
 Point 1022 N 2,045,445.8285 E 2,560,110.8998 Sta 401+27.80  
 Course from 1022 to 1029 358° 46' 41.60" Dist 877.0223'  
 Point 1029 N 2,046,322.6514 E 2,560,092.1996 Sta 410+04.82

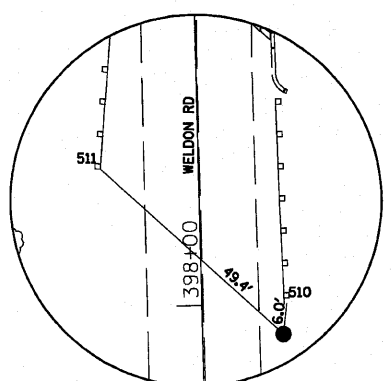
Ending chain WELDON description



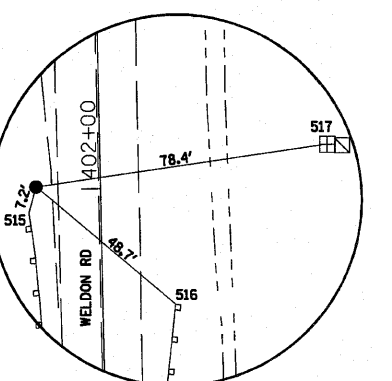
HORIZONTAL CONTROL POINT No. 7



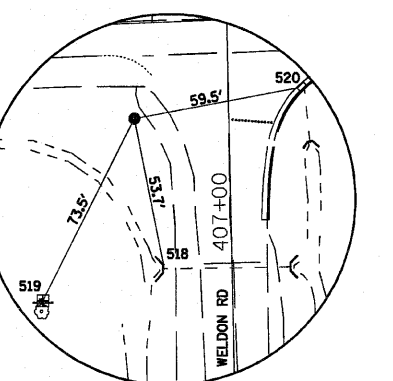
HORIZONTAL CONTROL POINT No. 8



HORIZONTAL CONTROL POINT No. 9



HORIZONTAL CONTROL POINT No. 10



HORIZONTAL CONTROL POINT No. 11

HORIZONTAL CONTROL POINTS							
POINT	NORTH	EAST	ELEVATION	CHAIN	STATION	OFFSET	DESCRIPTION
6	2043838.1800	2560165.1446	818.5846	WELDON	385+19.36	17.6223' RT	TOPO SURVEY POINT, PIN
7	2044235.6084	2560120.5005	814.7619	WELDON	389+17.64	18.6487' LT	TOPO SURVEY POINT, PIN
8	2044697.9795	2560107.6673	821.0367	WELDON	393+80.25	21.3914' LT	TOPO SURVEY POINT, PIN
9	2045112.4546	2560134.5859	831.1177	WELDON	397+93.91	16.1379' RT	TOPO SURVEY POINT, PIN
10	2045518.5176	2560092.1666	829.2250	WELDON	402+00.87	17.179' LT	TOPO SURVEY POINT, PIN
11	2046069.9850	2560063.6852	813.6044	WELDON	407+52.82	33.8953' LT	TOPO SURVEY POINT, PIN

SURVEY WORK POINTS							
POINT	NORTH	EAST	ELEVATION	CHAIN	STATION	OFFSET	DESCRIPTION
100	2044517.4365	2560113.2046	816.5958	WELDON	391+99.55	20.0124' LT	TOPO SURVEY POINT, NAIL
101	2044906.9250	2560388.4700	814.6270	WELDON	395+81.83	264.5729' RT	TOPO SURVEY POINT, PIN
102	2045768.4640	2560125.4420	820.7929	WELDON	404+50.05	21.4183' RT	TOPO SURVEY POINT, NAIL

BENCH MARKS							
POINT	NORTH	EAST	ELEVATION	CHAIN	STATION	OFFSET	DESCRIPTION
405	2044900.0421	2560479.8109	811.3208	WELDON	395+72.57	355.7031' RT	HEADWALL, CHISELED SQUARE
408	2044547.8098	2560103.9664	815.4304	WELDON	392+30.12	28.6094' LT	HEADWALL, CHISELED SQUARE
409	2045160.8593	2560134.9377	833.0493	WELDON	398+42.29	17.7525' RT	WALL, CHISELED SQUARE
410	2045434.7546	2560124.8310	831.9012	WELDON	401+16.42	13.6884' RT	HUB GUARD, CHISELED SQUARE
411	2046015.6178	2560073.9514	812.4843	WELDON	406+98.24	24.7907' LT	HEADWALL, CHISELED SQUARE

REFERENCE TIES							
POINT	NORTH	EAST	CHAIN	STATION	OFFSET	DESCRIPTION	
500	2043847.9191	2560168.9100	WELDON	385+29.01	21.5918' RT	PIPE CULVERT, CMP	
501	2043825.1816	2560169.4829	WELDON	385+06.27	21.6861' RT	PIPE CULVERT, CMP	
502	2043846.6579	2560125.1130	WELDON	385+28.67	22.2221' LT	PIPE CULVERT, CMP	
506	2044666.5062	2560078.7560	WELDON	393+49.49	51.061' LT	PIPE CULVERT, CMP	
507	2044731.9310	2560072.5881	WELDON	394+15.04	55.6329' LT	HEADWALL, CORNER	
508	2044713.6400	2560057.0529	WELDON	393+97.14	71.6092' LT	TREE DECIDUOUS	
509	2045091.2962	2560130.1117	WELDON	397+72.88	11.1131' RT	PAVEMENT - EDGE, NAIL	
510	2045118.4508	2560135.2274	WELDON	397+99.89	16.9356' RT	GUARDRAIL STEEL PLATE BEAM, END	
511	2045145.2347	2560097.6386	WELDON	398+27.65	19.9416' LT	GUARDRAIL STEEL PLATE BEAM, GUARDRAIL STEEL PLATE BEAM	
515	2045511.5894	2560090.5555	WELDON	401+93.98	18.9375' RT	GUARDRAIL STEEL PLATE BEAM, END	
516	2045487.1291	2560129.4232	WELDON	401+68.69	19.3998' RT	GUARDRAIL STEEL PLATE BEAM, GUARDRAIL STEEL PLATE BEAM	
517	2045529.8908	2560169.8180	WELDON	402+10.58	60.6972' RT	TELEPHONE SPlice BOX	
518	2046017.3218	2560074.1512	WELDON	406+99.94	24.5546' LT	HEADWALL, END	
519	2046004.2843	2560030.7943	WELDON	406+87.83	68.1797' LT	TELEPHONE SPlice BOX	
520	2046080.7832	2560122.1676	WELDON	407+62.37	24.804' RT	CATCH BASIN, CORNER	

APPARENT PROPERTY CORNERS							
POINT	NORTH	EAST	ELEVATION	CHAIN	STATION	OFFSET	DESCRIPTION
700	2044715.8779	2560067.2455	814.9801	WELDON	393+99.12	61.3651' LT	PROPERTY CORNER, PIN
701	2045459.2028	2560180.5019	825.9771	WELDON	401+39.68	69.8714' RT	PROPERTY CORNER, PIN
702	2045848.7495	2560171.0499	823.6645	WELDON	405+29.34	68.7277' RT	PROPERTY CORNER, PIN
703	2046073.7142	2560166.6352	815.2603	WELDON	407+54.35	69.1108' RT	PROPERTY CORNER, PIN
704	2044820.2144	2559994.8940	818.4617	WELDON	395+05.42	131.1316' LT	PROPERTY CORNER, PIN

FILE NAME = G:\S091010-3\CADD Sheets\0264E11-sht-ATB.dgn	USER NAME = IE Consultants	DESIGNED -	REVISED -
PLOT SCALE = 294.1235' / IN.	CHECKED -	REVISED -	REVISED -
PLOT DATE = 7/23/2010	DATE -	REVISED -	REVISED -

STATE OF ILLINOIS  
DEPARTMENT OF TRANSPORTATION

ALIGNMENT, TIES AND BENCHMARKS

SCALE: SHEET NO. OF SHEETS STA. TO STA.

F.A.P. RTE. 301	SECTION (1-1HB-1)D	COUNTY WINNEBAGO	TOTAL SHEETS 55	SHEET NO. 11
FED. ROAD DIST. NO.		ILLINOIS FED. AID PROJECT CONTRACT NO. 64E11		