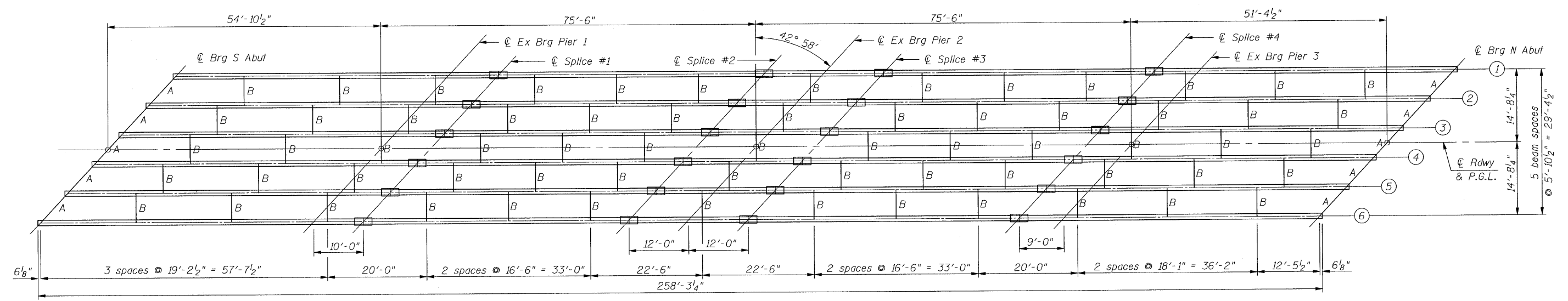
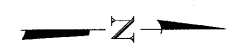
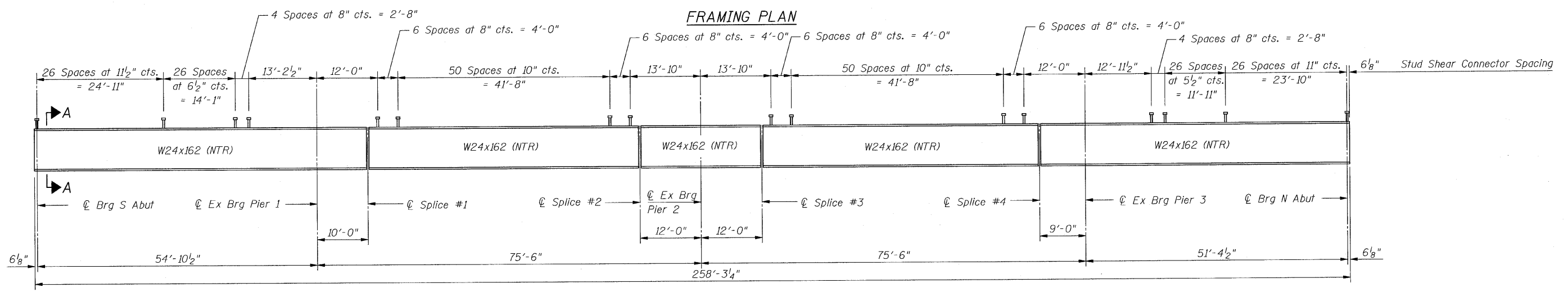


STATE OF ILLINOIS
DEPARTMENT OF TRANSPORTATION

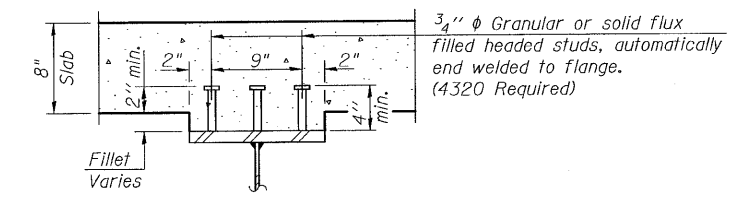


FRAMING PLAN



ELEVATION

Notes:
 For diaphragm details see Sheet 15 of 34.
 All cross frames or diaphragms shall be installed as steel is erected and secured with erection pins and bolts except as otherwise noted. Individual cross frames or diaphragms at supports may be temporarily disconnected to install bearing anchor rods.
 Load carrying components designated "NTR" shall conform to the Supplemental Requirements for Notch Toughness, Zone 2.



SECTION A-A

FRAMING PLAN
S.N. 101-0120

DESIGNED	SCD
CHECKED	DRB
DRAWN	THW
CHECKED	SCD

ie consultants
 IE CONSULTANTS, INC
 6420 SOUTH SIXTH STREET
 SPRINGFIELD, ILLINOIS 62712
 TEL. (217) 529-8027
 FAX (217) 529-4543
 WWW.IE-CONSULTANTS.COM

SHEET NO. 14 OF 34 SHEETS	F.A.P. RTE. 301	SECTION (1-1HB-1)D	COUNTY WINNEBAGO	TOTAL SHEETS 55	SHEET NO. 30
	CONTRACT NO. 64E11 ILLINOIS FED. AID PROJECT				