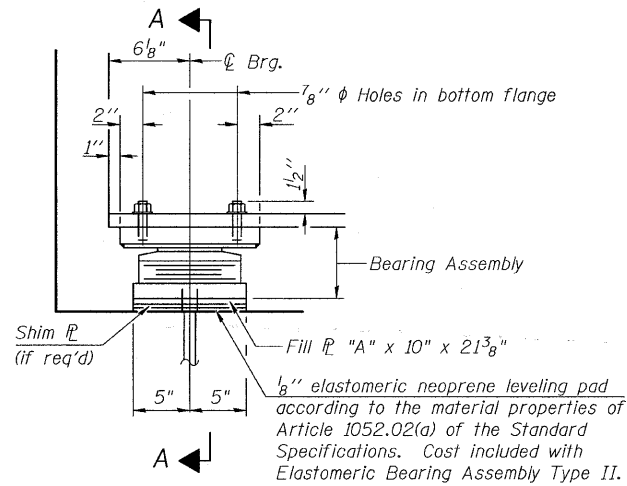
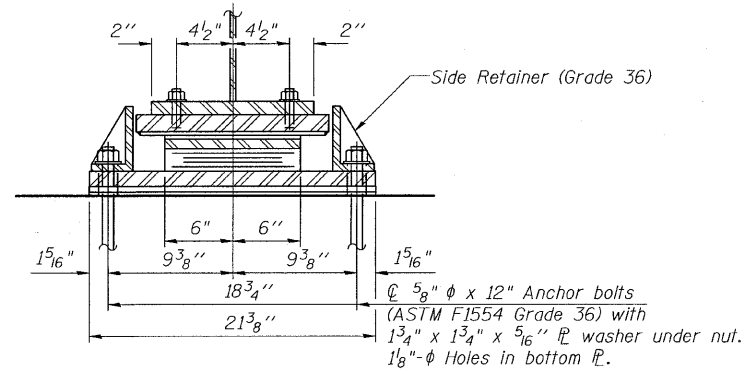


STATE OF ILLINOIS
DEPARTMENT OF TRANSPORTATION



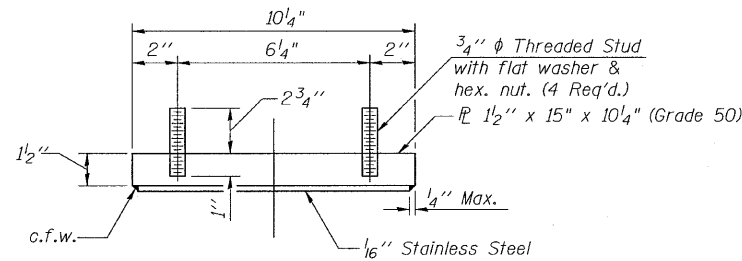
ELEVATION AT ABUT.



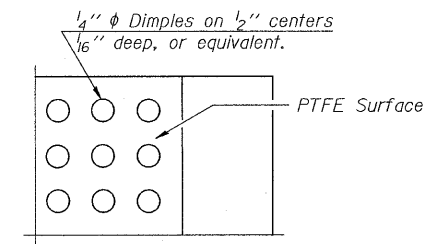
SECTION A-A

TYPE II ELASTOMERIC EXP. BRG.

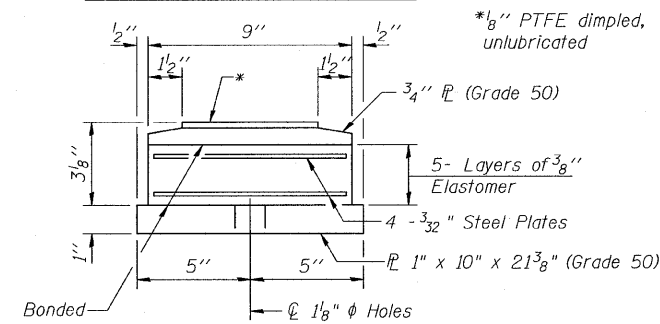
(N. Abut. & S. Abut.)



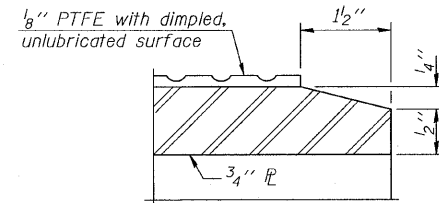
TOP BEARING ASSEMBLY



PLAN-PTFE SURFACE



BOTTOM BEARING ASSEMBLY



SECTION THRU PTFE

FILL PLATES

Location	Beam	"A"
South Abut.	2	5/8"
North Abut.	5	1/4"
North Abut.	6	1/4"

Notes:
Anchor bolts shall be ASTM F1554 all-thread (or an Engineer-approved alternate material) of the grade(s) and diameter(s) specified. ASTM A307 Grade C anchor bolts may be used in lieu of ASTM F1554 Grade 36 (Fy=36ksi). The corresponding specified grade of AASHTO M314 anchor bolts may be used in lieu of ASTM F1554.

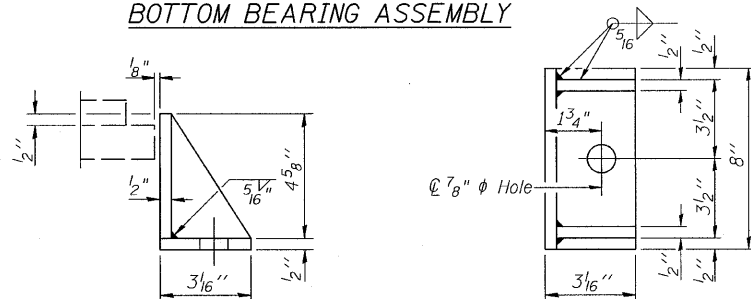
Anchor bolts for Type II bearings shall be placed in holes drilled in the concrete through holes in the bottom bearing plate after members are in place. Side retainers shall be placed after bolts are installed.

Drilled and set anchor bolts shall be installed according to Article 521.06 of the Standard Specifications.

Side retainers, shims and other steel members required for the bearing assembly shall be included in the cost of Elastomeric Bearing Assembly, Type II.

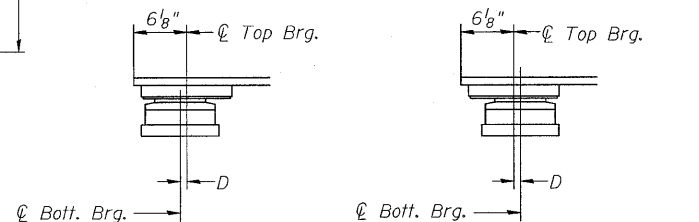
The 1/8" PTFE sheet shall be bonded directly to the top steel plate with a two-component, medium viscosity epoxy resin, conforming to the requirements of the Federal Specification MMM-A-134, Type I. The bond agent shall be applied on the full area of the contact surfaces.

Bonding of 1/8" PTFE sheet during vulcanizing process will be permitted provided the process and method of adjusting assembly height is approved by the Engineer.



SIDE RETAINER

Equivalent rolled angle with stiffeners will be allowed in lieu of welded plates.



BELOW 50°F. (Move bott. brg. away from fixed brg.) ABOVE 50°F. (Move bott. brg. toward fixed brg.)

SETTING ANCHOR BOLTS AT EXP. BRG.

D= 1/8" per each 100' of expansion for every 15° temp. change from the normal temp. of 50°F.

BILL OF MATERIAL

Item	Unit	Total
Elastomeric Bearing Assembly Type II	Each	12
Anchor Bolts 5/8"	Each	24

BEARING DETAILS
S.N. 101-0120

DESIGNED	SCD
CHECKED	DRB
DRAWN	THW
CHECKED	SCD



IE CONSULTANTS, INC
6420 SOUTH SIXTH STREET
SPRINGFIELD, ILLINOIS 62712
TEL. (217) 529-8027
FAX (217) 529-4543
WWW.IE-CONSULTANTS.COM

I-2E-2

11-1-09

SHEET NO. 17 OF 34 SHEETS	F.A.P. RTE. 301	SECTION (1-1HB-1)D	COUNTY WINNEBAGO	TOTAL SHEETS 55	SHEET NO. 33
	CONTRACT NO. 64E11				
ILLINOIS FED. AID PROJECT					