

STATE OF ILLINOIS
DEPARTMENT OF TRANSPORTATION

BORING NO. 5a
STA. 399+09
32' RT. OF CL RDWY.



Illinois Department
of Transportation

ROCK CORE LOG

Page 1 of 1

Date 1/21/07

ROUTE FAP 301 DESCRIPTION P92-060-08 Bridge over Bypass 20, Weldon Road over Bypass 20, 25 m. S. of BR20 LOGGED BY J. Straling

SECTION (1-1HB-1)D LOCATION Winnebago Twp., 25SW, SEC., TWP. 28N, RNG. 11E

COUNTY Winnebago CORING METHOD

STRUCT. NO. _____ CORING BARREL TYPE & SIZE
Station _____ Core Diameter 2 in
BORING NO. B-5a Top of Rock Elev. 79.70 ft
Station 10+83 Begin Core Elev. 79.20 ft
Offset 36.00R LI CL
Ground Surface Elev. 80.70 ft

DEPTH (ft)	RECOVER (%)	R.Q.D. (%)	CORE TIME (min/ft)	STRENGTH (tsf)
75.20	100	48	1.2	289.0
70.20	100	58	1.4	531.0
65.20	100	72	1.4	661.0
60.20				

Color pictures of the cores
Cores will be stored for examination until _____
The "Strength" column represents the uniaxial compressive strength of the core sample (ASTM D-2938)
BBS, form 138 (Rev. 8-89)

Note:
To correct Boring Logs B-2a, B-3a,
B-4a & B-5a to Plan Datum, add 733.12
to Elevation Value in Boring Logs.

ORIGINAL BORINGS

(1960)

BORING NO. 1

BORING NO. 2

BORING NO. 3

BORING NO. 4

BORING NO. 5

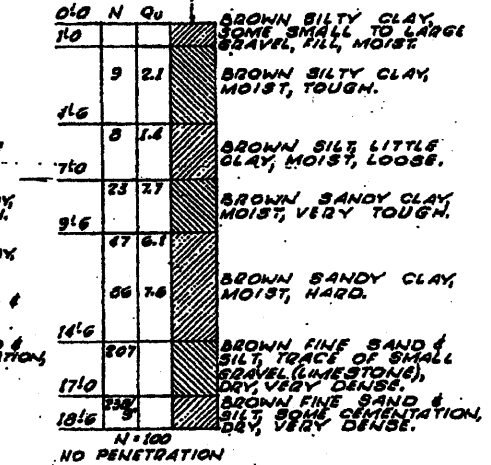
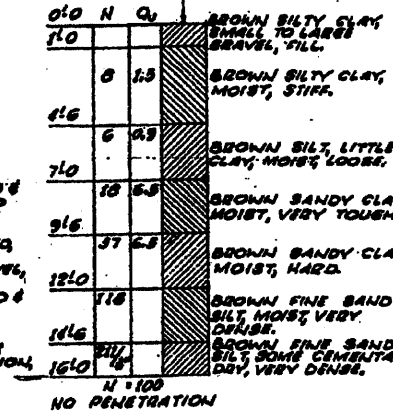
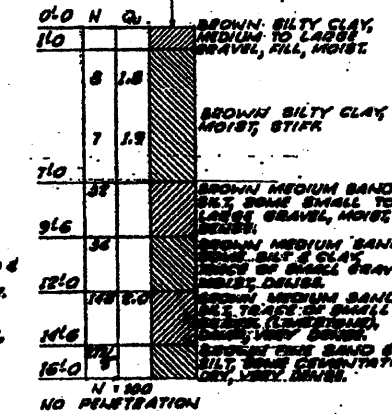
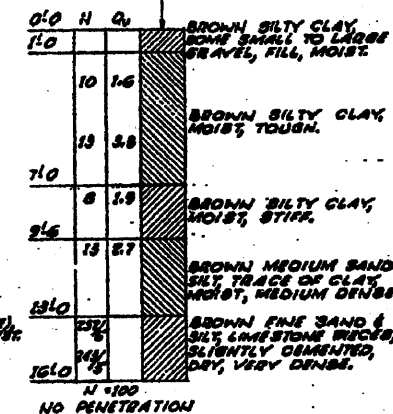
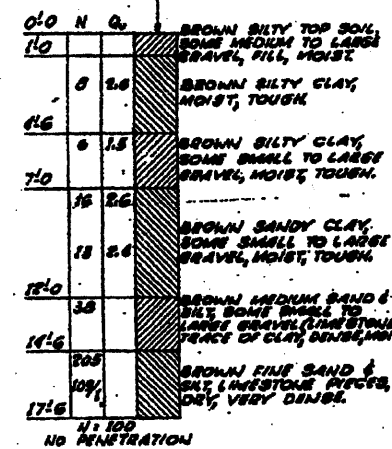
STA 401+21.53
10' RT OF CL RDWY
GROUND EL. 879.0

STA 400+63.53
10' RT OF CL RDWY
GROUND EL. 878.1

STA 399+90.53
10' RT OF CL RDWY
GROUND EL. 876.9

STA 399+17.53
10' RT OF CL RDWY
GROUND EL. 853.7

STA 398+64.53
10' RT OF CL RDWY
GROUND EL. 874.6



N = Number of blows per foot
for a 140 lbs hammer falling 30".
Qu = Unconfined compressive
strength in kips per sq. ft.

DESIGNED	SCD
CHECKED	DRB
DRAWN	THW
CHECKED	SCD



IE CONSULTANTS, INC
6420 SOUTH SIXTH STREET
SPRINGFIELD, ILLINOIS 62712
TEL. (217) 529-8027
FAX (217) 529-4543
WWW.IE-CONSULTANTS.COM

SOIL BORINGS
S.N. 101-0120

SHEET NO. 34 OF 34 SHEETS	F.A.P. RTE.	SECTION	COUNTY	TOTAL SHEETS	SHEET NO.
	301	(1-1HB-1)D	WINNEBAGO	55	50
CONTRACT NO. 64E11					
ILLINOIS FED. AID PROJECT					