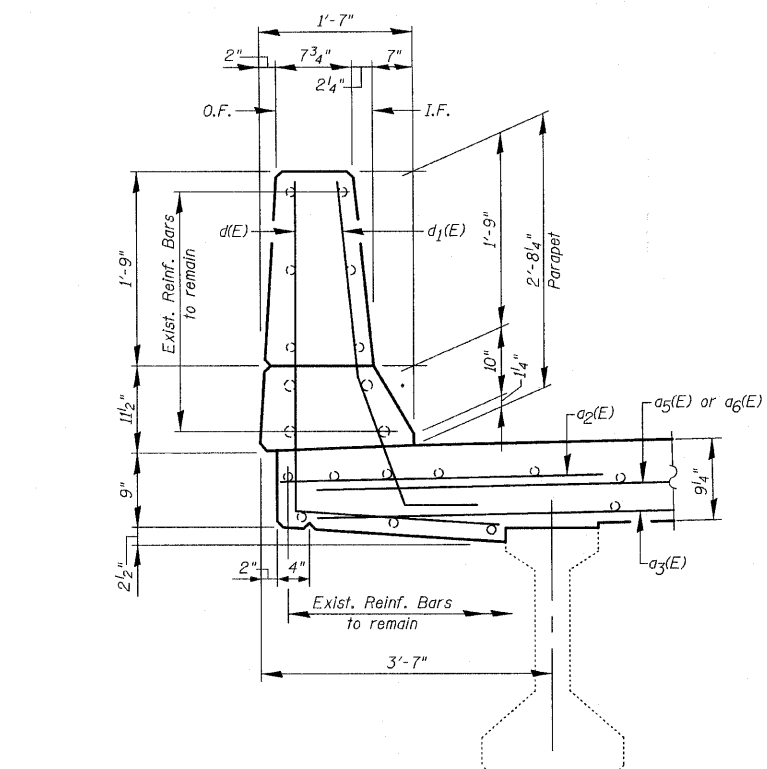
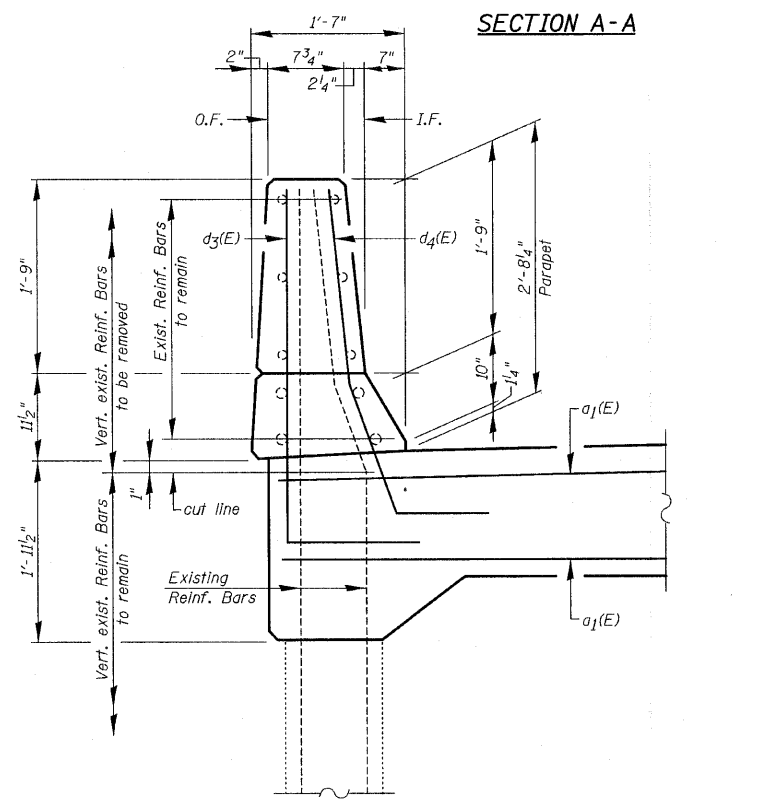


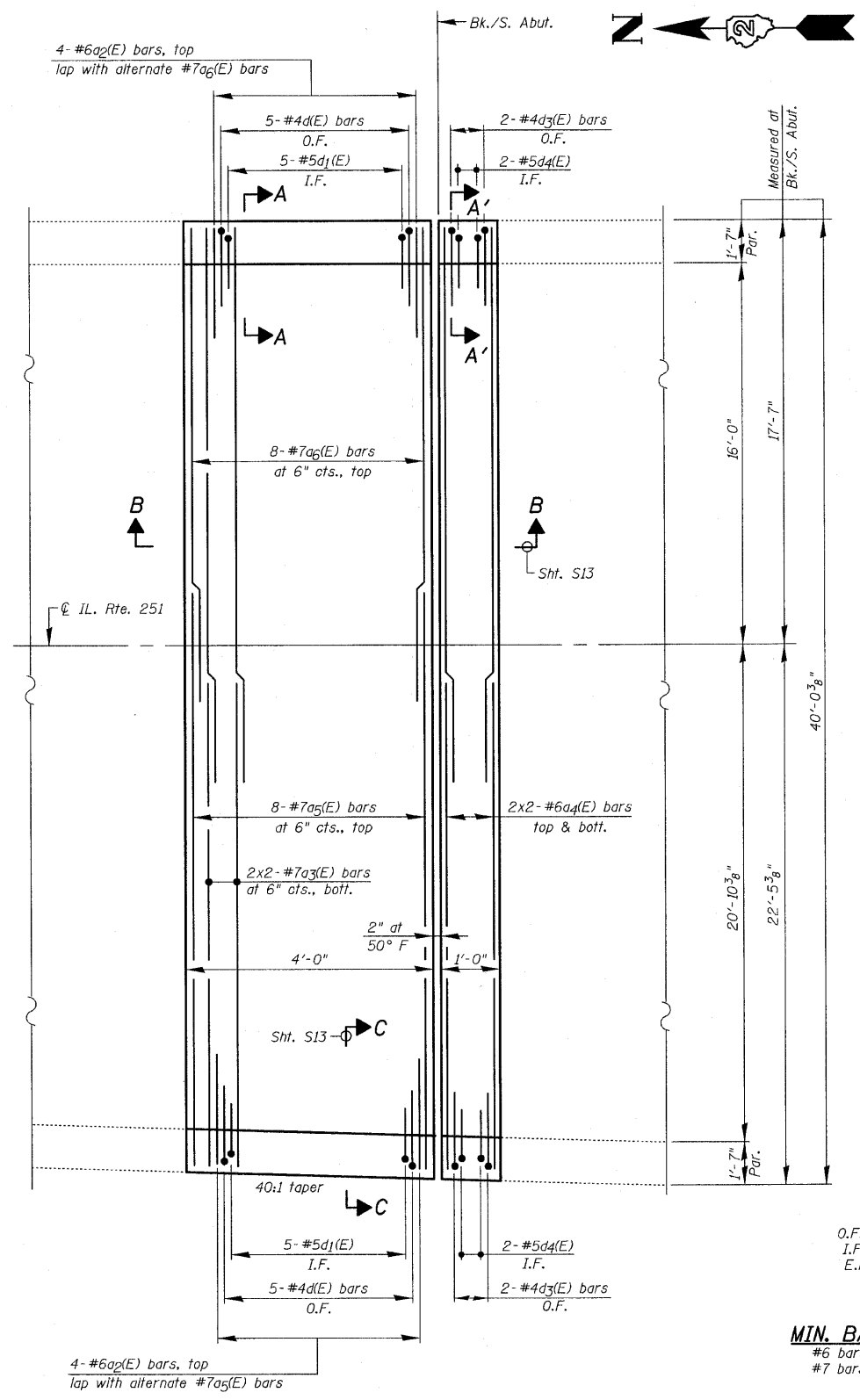
STATE OF ILLINOIS  
DEPARTMENT OF TRANSPORTATION



SECTION A-A

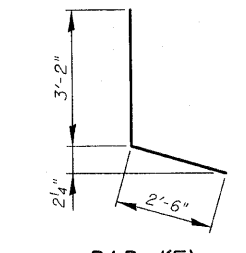


SECTION A'-A'

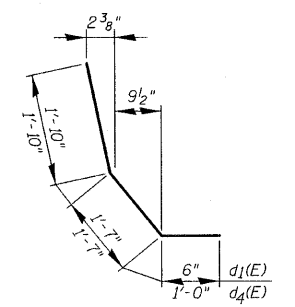


EXPANSION JOINT RECONSTRUCTION  
AT SOUTH ABUTMENT

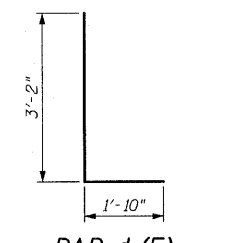
PLAN



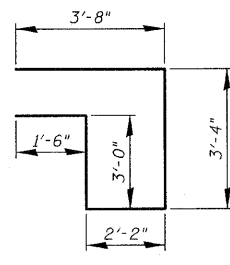
BAR d(E)



BARS d1(E) & d4(E)



BAR d3(E)



BAR s(E)

LEGEND:  
O.F. = Outside Face  
I.F. = Inside Face  
E.F. = Each Face

MIN. BAR LAP:  
#6 bars = 3'-6"  
#7 bars = 4'-2"

BILL OF MATERIAL

Bar	No.	Size	Length	Shape
a2(E)	8	#6	4'-7"	—
a3(E)	4	#7	21'-7"	—
a4(E)	8	#6	21'-7"	—
a5(E)	8	#7	24'-4"	—
a6(E)	8	#7	19'-6"	—
d(E)	10	#4	5'-8"	L
d1(E)	10	#5	3'-11"	L
d3(E)	4	#4	5'-0"	L
d4(E)	4	#5	4'-5"	L
m2(E)	16	#4	7'-6"	—
m3(E)	8	#6	6'-2"	—
s(E)	24	#4	13'-8"	U
Reinforcement Bars, Epoxy Coated		Pound	1,690	
Concrete Removal		Cu Yd	10.4	
Concrete Superstructure		Cu Yd	17.3	

Bars indicated thus 2x2-#6 etc., indicates 2 lines of bars with 2 lengths per line

DESIGNED -	2010
CHECKED -	EXAMINED
DRAWN -	PASSED
CHECKED -	

SHEET NO. S12	F.A.P. RTE. 740	SECTION (108HVB)M	COUNTY OGLE	TOTAL SHEETS 55	SHEET NO. 19
S43 SHEETS	CONTRACT NO. 64G24		ILLINOIS FED. AID PROJECT		

CHRISTIAN-ROGE & ASSOCIATES, INC.  
ENGINEERS-PLANNERS-SURVEYORS  
211 WEST WACKER DRIVE  
CHICAGO, ILLINOIS 60606  
PHONE: (312)372-2023 FAX: (312)372-5274