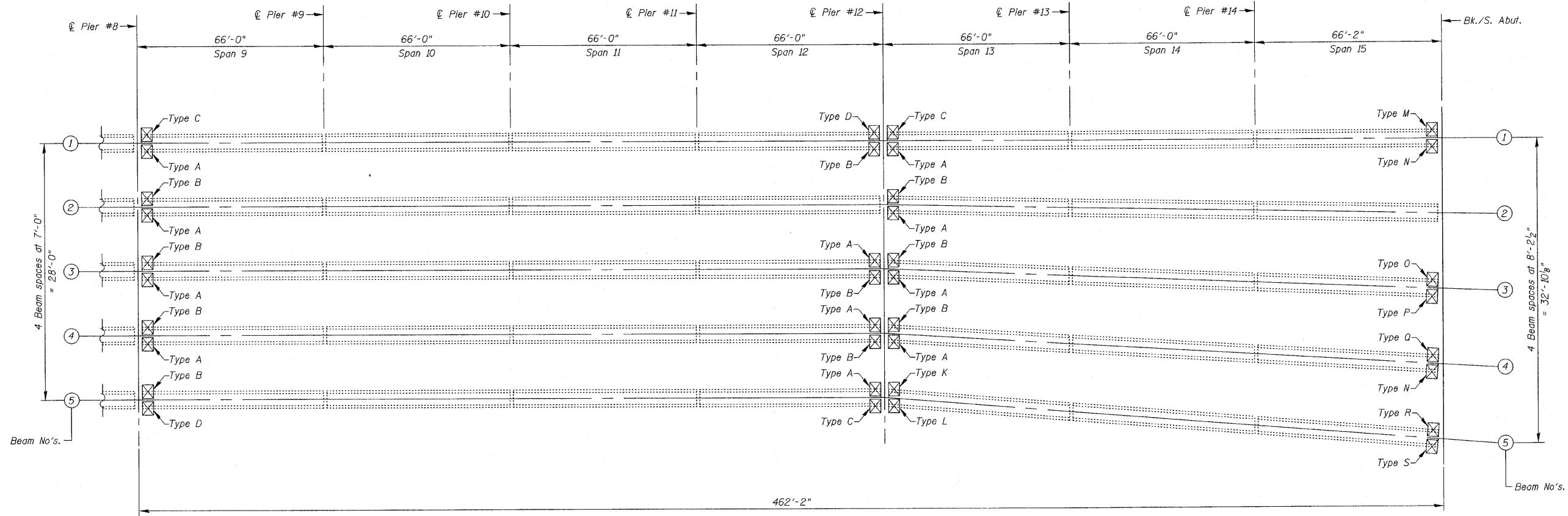
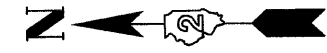


STATE OF ILLINOIS
DEPARTMENT OF TRANSPORTATION



FRAMING PLAN
(Spans 9 thru 15)

LEGEND:
 Beam End Repair

BEAM END REPAIR LOCATIONS

BEAM REPAIR TYPE	LOCATION	FACE	BEAM NUMBERS	BEAM REPAIR TYPE	LOCATION	FACE	BEAM NUMBERS
A	NORTH ABUTMENT	WEST	1,2,3,4	D	NORTH ABUTMENT	WEST	5
A	PIER 4	EAST	2,3,4,5	D	PIER 4	EAST	1
A	PIER 4	WEST	1,2,3,4	D	PIER 4	WEST	5
A	PIER 8	EAST	3,4,5	D	PIER 8	EAST	1
A	PIER 8	WEST	1,2,3,4	D	PIER 8	WEST	5
A	PIER 12	EAST	3,4,5	D	PIER 12	EAST	1
A	PIER 12	WEST	1,2,3,4	E	PIER 1	EAST	1
B	NORTH ABUTMENT	EAST	2,3,4,5	F	PIER 2	EAST	1
B	PIER 4	WEST	1,2,3,4	G	PIER 5	EAST	5
B	PIER 4	EAST	2,3,4,5	H	PIER 5	WEST	5
B	PIER 8	WEST	1,3,4	I	PIER 7	EAST	5
B	PIER 8	EAST	2,3,4,5	J	PIER 7	WEST	5
B	PIER 12	WEST	1,3,4	K	PIER 12	EAST	5
B	PIER 12	EAST	2,3,4	L	PIER 12	WEST	5
C	NORTH ABUTMENT	EAST	1	M	SOUTH ABUTMENT	EAST	1
C	PIER 4	WEST	5	N	SOUTH ABUTMENT	WEST	1,4
C	PIER 4	EAST	1	O	SOUTH ABUTMENT	EAST	3
C	PIER 8	WEST	5	P	SOUTH ABUTMENT	WEST	3
C	PIER 8	EAST	1	Q	SOUTH ABUTMENT	EAST	4
C	PIER 12	WEST	5	R	SOUTH ABUTMENT	EAST	5
C	PIER 12	EAST	1	S	SOUTH ABUTMENT	WEST	5

NOTE
For Beam End Repair details, see Sht. S29

BEAM END REPAIRS-II
IL. RTE. 251 OVER IL. RTE. 38
C&NW R.R. AND B.N. R.R.
F.A.P. RTE. 740 (IL. RTE. 251)
SECTION (108HVB)M
OGLE COUNTY
STA. 856+44.00
STRUCTURE NO. 071-0066

DESIGNED -	2010
CHECKED -	EXAMINED
DRAWN -	ENGINEER OF BRIDGE DESIGN
CHECKED -	PASSED
	ENGINEER OF BRIDGES AND STRUCTURES

CR & A
CHRISTIAN-ROGE & ASSOCIATES, INC.
ENGINEERS-PLANNERS-SURVEYORS
211 WEST WACKER DRIVE
CHICAGO, ILLINOIS 60606
PHONE: (312)372-2023 FAX: (312)372-5274

SHEET NO. S28	F.A.P. RTE.	SECTION	COUNTY	TOTAL SHEETS	SHEET NO.
	740	(108HVB)M	OGLE	55	35
S43 SHEETS	CONTRACT NO. 64G24			ILLINOIS FED. AID PROJECT	