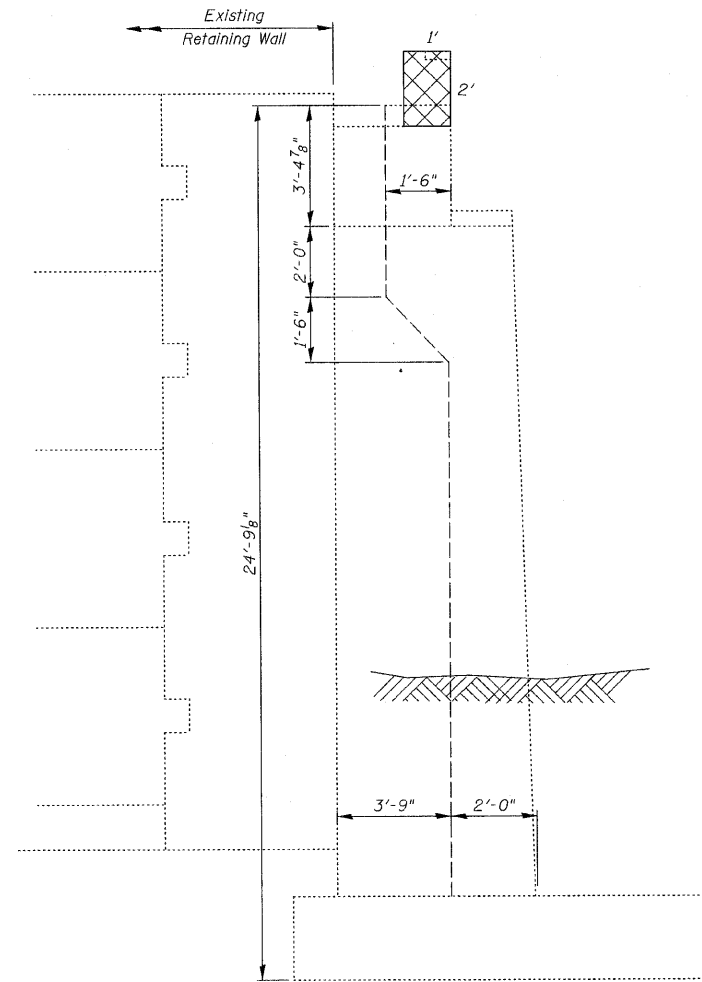
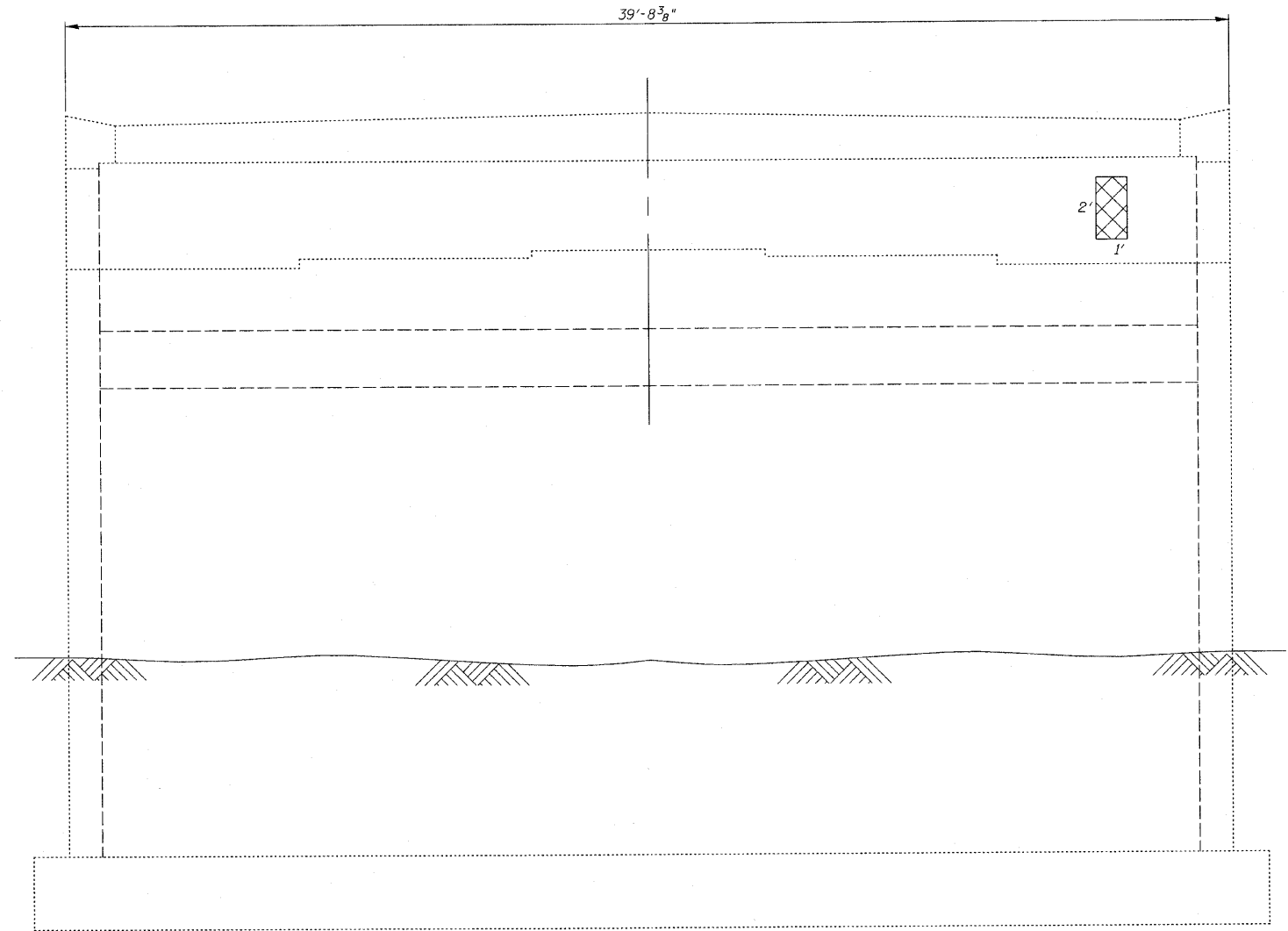



STATE OF ILLINOIS
DEPARTMENT OF TRANSPORTATION



SIDE VIEW
(Looking West)



ELEVATION-SOUTH ABUTMENT
(Looking South)

LEGEND:
 Structural Repair of Concrete
 (Depth Equal To or Less Than 5 Inches)

BILL OF MATERIAL

ITEM	UNIT	QUANTITY
Structural Repair of Concrete (Depth Equal To or Less Than 5 Inches)	Sq Ft	4

SOUTH ABUTMENT REPAIRS
IL. RTE. 251 OVER IL. RTE. 38
C&NW R.R. AND B.N. R.R.
F.A.P. RTE. 740 (IL. RTE. 251)
SECTION (108HVB)M
OGLE COUNTY
STA. 856+44.00
STRUCTURE NO. 071-0066

DESIGNED -	2010
CHECKED -	EXAMINED
DRAWN -	ENGINEER OF BRIDGE DESIGN
CHECKED -	PASSED
	ENGINEER OF BRIDGES AND STRUCTURES

CR & A
 CHRISTIAN-ROGE & ASSOCIATES, INC.
 ENGINEERS-PLANNERS-SURVEYORS
 211 WEST WACKER DRIVE
 CHICAGO, ILLINOIS 60606
 PHONE: (312)372-2023 FAX: (312)372-5274

SHEET NO. S32	F.A.P. RTE. 740	SECTION (108HVB)M	COUNTY OGLE	TOTAL SHEETS 55	SHEET NO. 39
S43 SHEETS	CONTRACT NO. 64G24		ILLINOIS FED. AID PROJECT		