

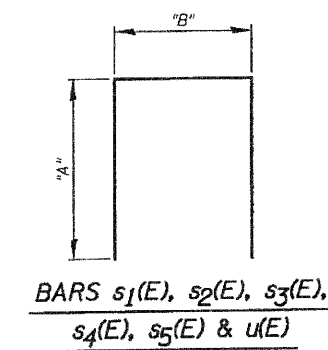
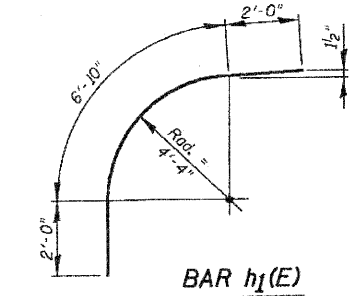
NOTE:
Space reinforcement bars in cap to miss anchor bolts.
Four steps monolithically with cap.

STATE OF ILLINOIS
DEPARTMENT OF TRANSPORTATION

BILL OF MATERIAL

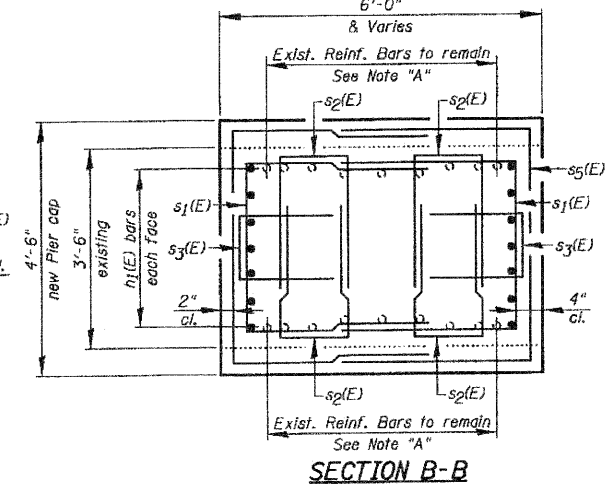
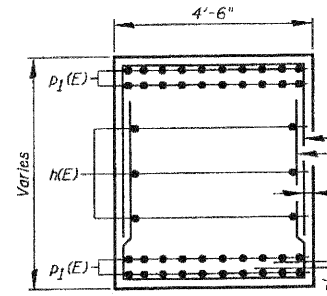
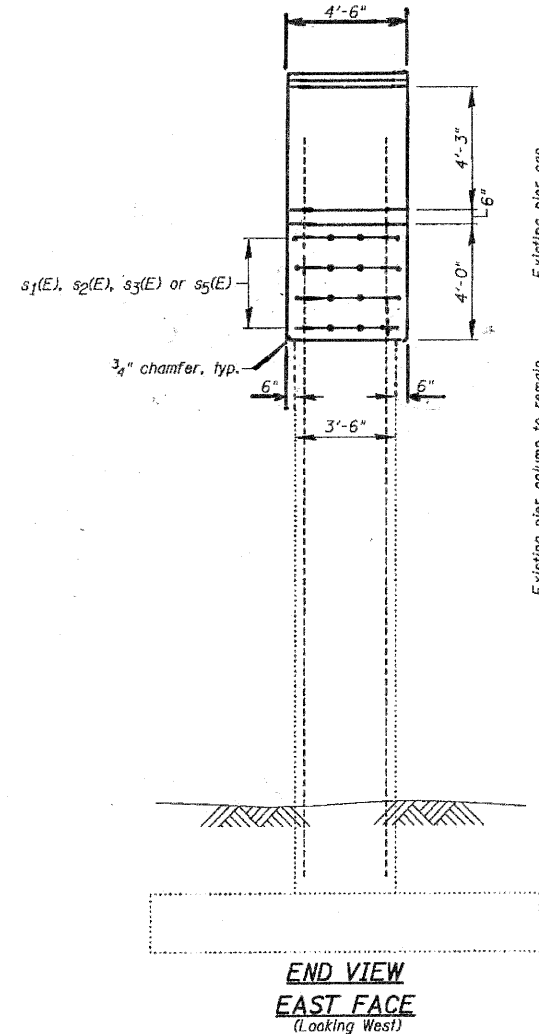
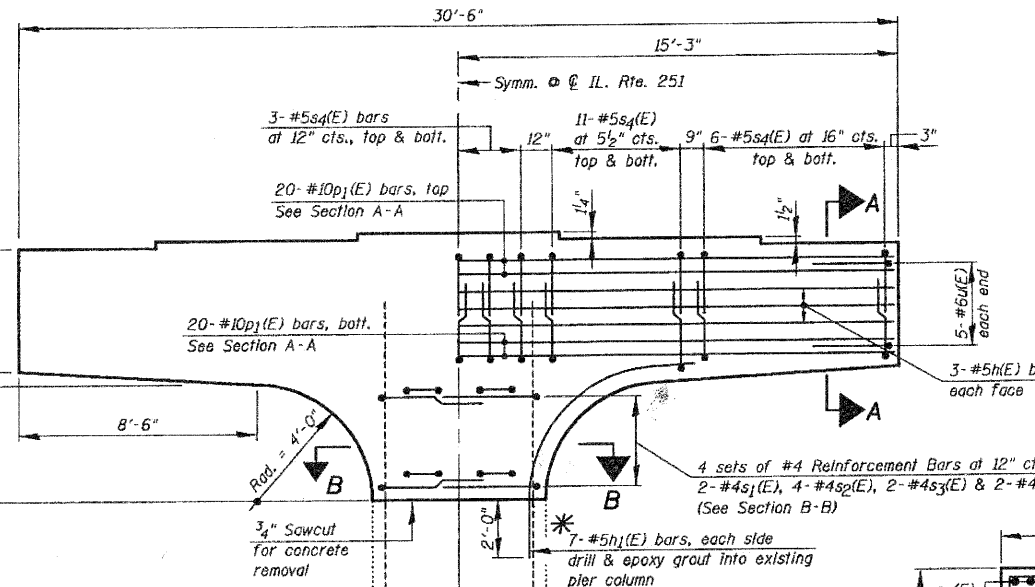
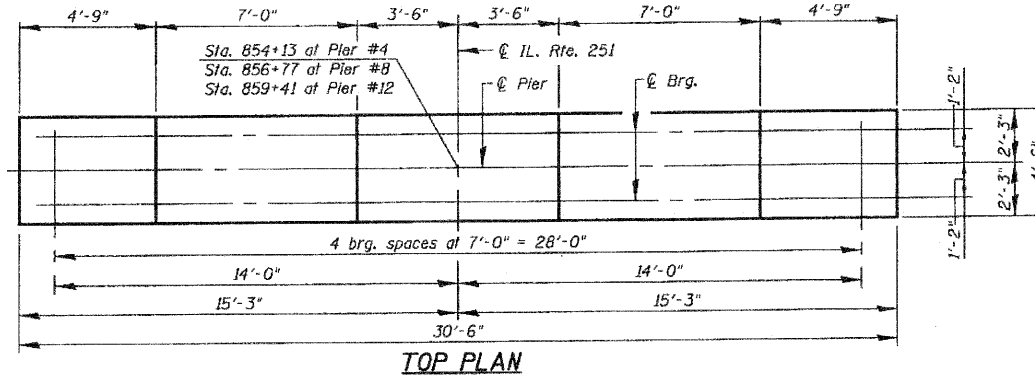
(For 1 Pier only - 3 required)
(For Piers #4, #8 or #12)

Bar	No.	Size	Length	Shape
h(E)	6	#5	30'-3"	—
h ₁ (E)	14	#5	10'-10"	┌
p ₁ (E)	40	#10	30'-3"	—
s ₁ (E)	8	#4	10'-4"	┐
s ₂ (E)	16	#4	6'-1"	┐
s ₃ (E)	8	#4	4'-8"	┐
s ₄ (E)	78	#5	9'-10"	┐
s ₅ (E)	8	#4	11'-4"	┐
u(E)	10	#6	9'-1"	┐
Reinforcement Bars, Epoxy Coated			Pound	6,700
Concrete Removal			Cu Yd	22.3
Concrete Structures			Cu Yd	28.7
Concrete Sealer			Sq Ft	476



Bar	"A"	"B"
s ₁ (E)	3'-6"	3'-4"
s ₂ (E)	2'-5"	1'-3"
s ₃ (E)	1'-9"	1'-2"
s ₄ (E)	2'-10"	4'-2"
s ₅ (E)	3'-8"	4'-0"
u(E)	2'-6"	4'-1"

NOTE "A"
Existing reinforcement bars projecting from the pier column to remain. The existing reinforcement bars shall be cleaned, straightened and incorporated into the new construction. Cost is included with "Concrete removal".
Any reinforcement bars that are damaged during concrete removal operations shall be repaired or replaced using an approved bar splicer or anchorage system. Cost included with "Concrete Removal".



* Epoxy grouting to be done in accordance with Article 584 of the Standard Specifications

NOTE:
Existing light fixture & conduit to be removed and stored prior to removal of existing pier cap.
After the pier cap replacement is completed, reattach the light fixture & conduit in the same locations. Cost included with "Concrete Removal".

**PIERS #4, #8 & #12
CAP REPLACEMENT
IL. RTE. 251 OVER IL. RTE. 38
C&NW R.R. AND B.N. R.R.
F.A.P. RTE. 740 (IL. RTE. 251)
SECTION (108HVB)M
OGLE COUNTY
STA. 856+44.00
STRUCTURE NO. 071-0066**

DESIGNED	2010
CHECKED	EXAMINED
DRAWN	PASSED
CHECKED	ENGINEER OF BRIDGES AND STRUCTURES

SHEET NO. S33	F.A.P. RTE. 740	SECTION (108HVB)M	COUNTY OGLE	TOTAL SHEETS 55	SHEET NO. 40
S43 SHEETS	CONTRACT NO. 64G24			ILLINOIS FED. AID PROJECT	

CHRISTIAN-ROGE & ASSOCIATES, INC.
ENGINEERS-PLANNERS-SURVEYORS
211 WEST WACKER DRIVE
CHICAGO, ILLINOIS 60606
PHONE: (312)372-2023 FAX: (312)372-5274