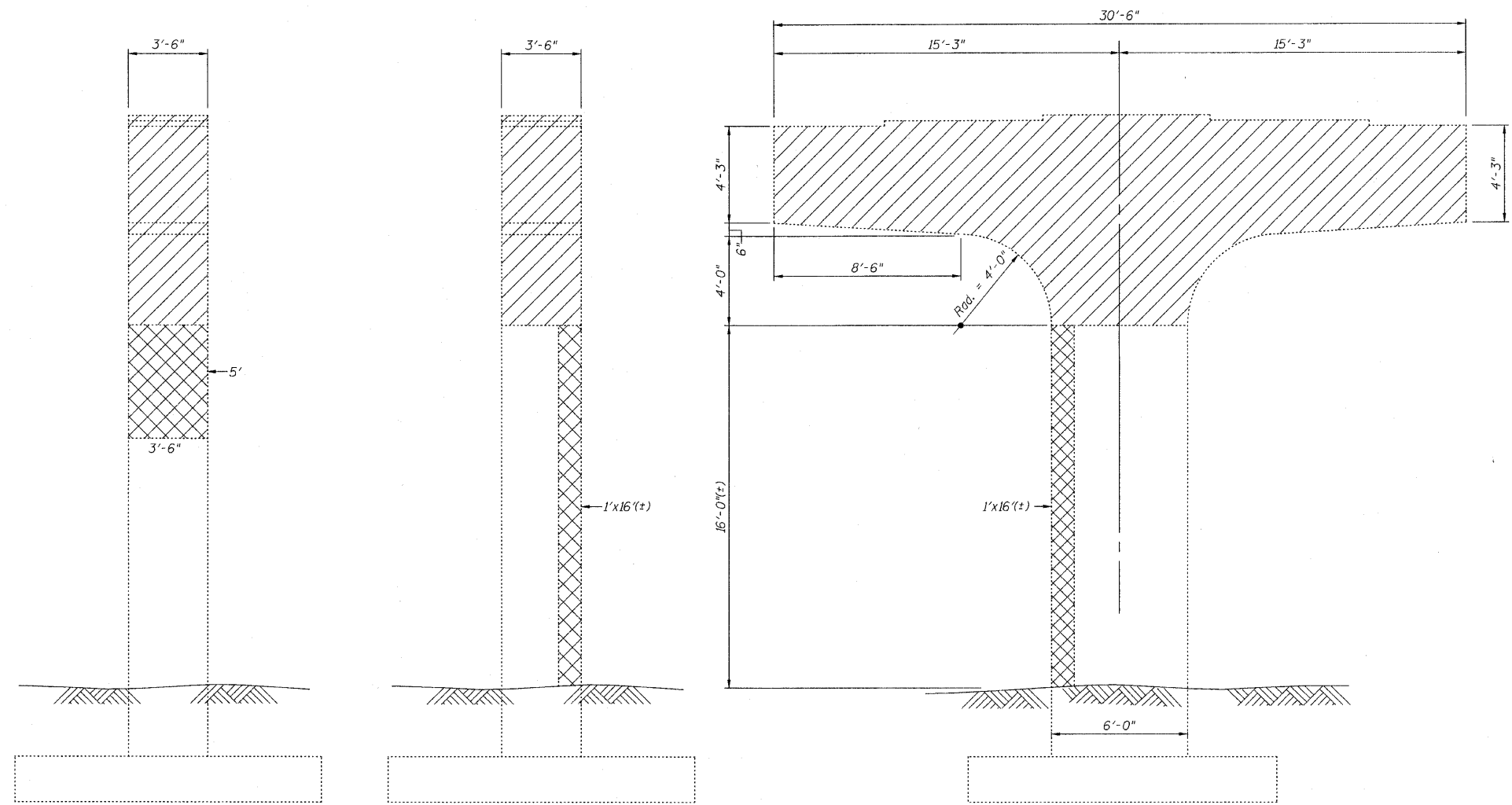


STATE OF ILLINOIS
DEPARTMENT OF TRANSPORTATION



**END VIEW
EAST FACE**
(Looking West)

**END VIEW
WEST FACE**
(Looking East)

**ELEVATION
SOUTH FACE**
(Looking North)

NOTE:
See Sht. S33, for Pier Cap Replacement

PIER #4

BILL OF MATERIAL

ITEM	UNIT	QUANTITY
Structural Repair of Concrete (Depth Equal To or Less Than 5 Inches)	Sq Ft	50

LEGEND:

Structural Repair of Concrete
(Depth Equal To or Less Than 5 Inches)

Pier Cap Replacement

* Structural repair of concrete operations shall be performed prior to rebuilding the pier cap

PIER #4 REPAIRS
IL. RTE. 251 OVER IL. RTE. 38
C&NW R.R. AND B.N. R.R.
F.A.P. RTE. 740 (IL. RTE. 251)
SECTION (108HVB)M
OGLE COUNTY
STA. 856+44.00
STRUCTURE NO. 071-0066

DESIGNED -	2010
CHECKED -	EXAMINED
DRAWN -	ENGINEER OF BRIDGE DESIGN
CHECKED -	PASSED
	ENGINEER OF BRIDGES AND STRUCTURES

CHRISTIAN-ROGE & ASSOCIATES, INC.
ENGINEERS-PLANNERS-SURVEYORS
211 WEST WACKER DRIVE
CHICAGO, ILLINOIS 60606
PHONE: (312)372-2023 FAX: (312)372-5274

SHEET NO. S34	F.A.P. RTE. 740	SECTION (108HVB)M	COUNTY OGLE	TOTAL SHEETS 55	SHEET NO. 41
S43 SHEETS	CONTRACT NO. 64G24		ILLINOIS FED. AID PROJECT		