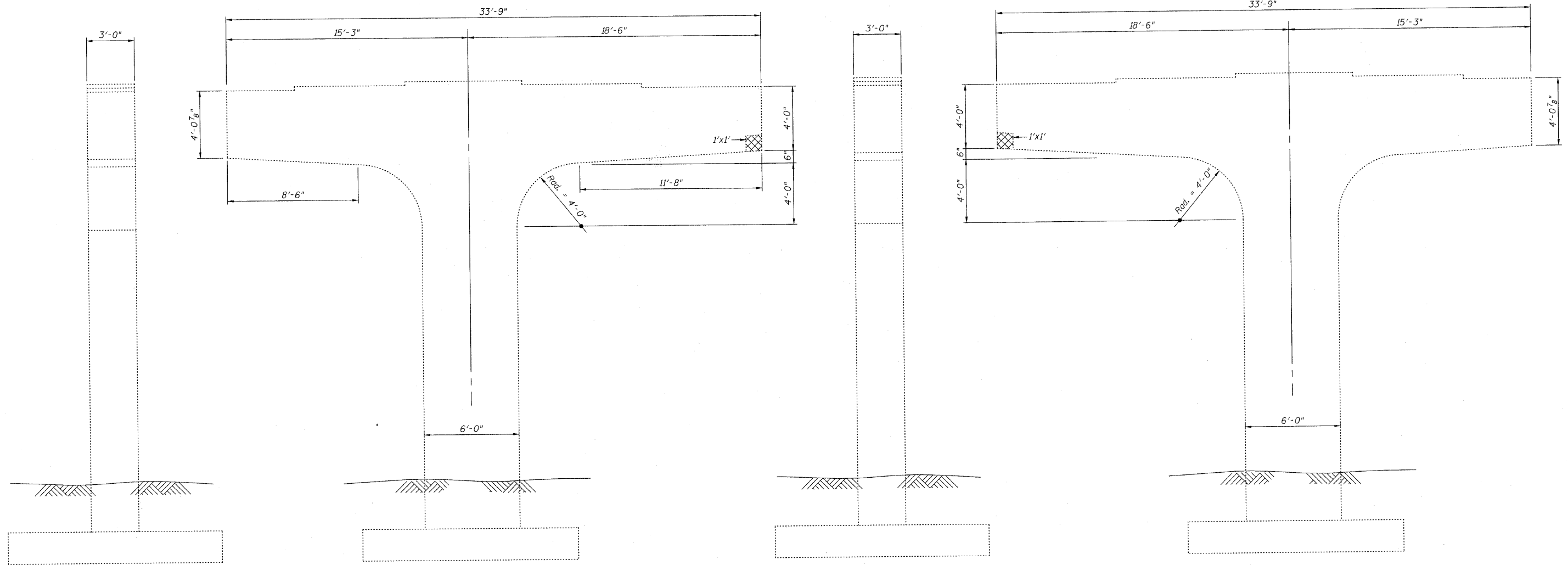


STATE OF ILLINOIS
DEPARTMENT OF TRANSPORTATION




**END VIEW
EAST FACE**
(Looking West)

**ELEVATION
NORTH FACE**
(Looking South)

**END VIEW
WEST FACE**
(Looking East)

**ELEVATION
SOUTH FACE**
(Looking North)

PIER #14

LEGEND:
 Structural Repair of Concrete
 (Depth Equal To or Less Than 5 Inches)

BILL OF MATERIAL

ITEM	UNIT	QUANTITY
Structural Repair of Concrete (Depth Equal To or Less Than 5 Inches)	Sq Ft	2

PIER #14 REPAIRS
IL. RTE. 251 OVER IL. RTE. 38
C&NW R.R. AND B.N. R.R.
F.A.P. RTE. 740 (IL. RTE. 251)
SECTION (108HV)M
OGLE COUNTY
STA. 856+44.00
STRUCTURE NO. 071-0066

DESIGNED -	2010
CHECKED -	EXAMINED
DRAWN -	ENGINEER OF BRIDGE DESIGN
CHECKED -	PASSED
	ENGINEER OF BRIDGES AND STRUCTURES

CR & A
 CHRISTIAN-ROGE & ASSOCIATES, INC.
 ENGINEERS-PLANNERS-SURVEYORS
 211 WEST WACKER DRIVE
 CHICAGO, ILLINOIS 60606
 PHONE: (312)372-2023 FAX: (312)372-5274

SHEET NO. S36 S43 SHEETS	F.A.P. RTE. 740	SECTION (108HV)M	COUNTY OGLE	TOTAL SHEETS 55	SHEET NO. 43
	CONTRACT NO. 64G24				ILLINOIS FED. AID PROJECT