

F.A.S. RTE.	SECTION	COUNTY	TOTAL SHEETS	SHEET NO.
1279	6R,B	LASALLE	190	1
FED. ROAD DIST. NO. -		ILLINOIS	CONTRACT NO. 66547	

STATE OF ILLINOIS
DEPARTMENT OF TRANSPORTATION
DIVISION OF HIGHWAYS

PROPOSED
HIGHWAY PLANS

FAS 1279 (IL ROUTE 178)
SECTION 6R, B
PROJECT NO. ACRS-ACTE-1279(111)
LASALLE COUNTY
C-93-028-05

THE PROJECT CONSISTS OF THE REALIGNMENT/RECONSTRUCTION OF FAS 1279 (IL 178) FROM NORTH OF LINCOLN STREET TO SOUTH OF JOHNSON STREET. WORK WILL ALSO INCLUDE STORM SEWERS, PAVEMENT MARKING, SIGNING, AND NEW BRIDGES TO CARRY IL 178 OVER THE I&M CANAL AND TO CARRY LINCOLN STREET OVER CLARK RUN CREEK.

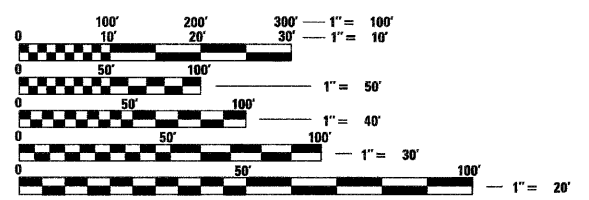
RANGE 2E

INDEX OF SHEETS

1. COVER SHEET
2. GENERAL NOTES
- 3-8. SUMMARY OF QUANTITIES
- 9-10. TYPICAL SECTIONS
- 11-15. SCHEDULE OF QUANTITIES
- 16-18. ALIGNMENT, TIES & BENCHMARKS
- 19-20. REMOVAL PLANS
- 21-25. PLAN & PROFILE - IL RTE 178 (RELOCATED)
26. STORM SEWER PROFILE - IL RTE 178 (RELOCATED)
- 27-34. PLAN & PROFILE - SIDE STREETS
35. PLAN & PROFILE - TEMPORARY RUNAROUND
- 36-45. STAGE CONSTRUCTION & TRAFFIC CONTROL PLANS
- 46-50. EROSION & SEDIMENT CONTROL PLANS
- 51-56. EXISTING UTILITY DETAILS
- 57-63. WATER MAIN PLANS
- 64-69. ROW PLANS
- 70-76. INTERSECTION DETAILS
- 77-79. PAVEMENT JOINTING & SIDEWALK PLANS
- 80-85. PAVEMENT MARKING PLANS
- 86-90. SIGNING PLANS
- 91-92. ROADWAY LIGHTING PLANS
- 93-102. SIDEWALK AND LANDSCAPE LIGHTING PLANS
- 103-122. I & M CANAL BRIDGE PLANS
- 123-139. LINCOLN STREET BRIDGE PLANS
140. GRADING PLAN - CLARK RUN CREEK
- 141-151. DETAILS
- 152-170. CROSS SECTIONS - IL RTE 178 (RELOCATED)
- 171-178. CROSS SECTIONS - LINCOLN STREET
- 179-188. CROSS SECTIONS - SIDE STREETS
- 189-190. CROSS SECTIONS - TEMPORARY RUNAROUND

HIGHWAY STANDARDS

SEE SHEET 2 FOR HIGHWAY STANDARDS

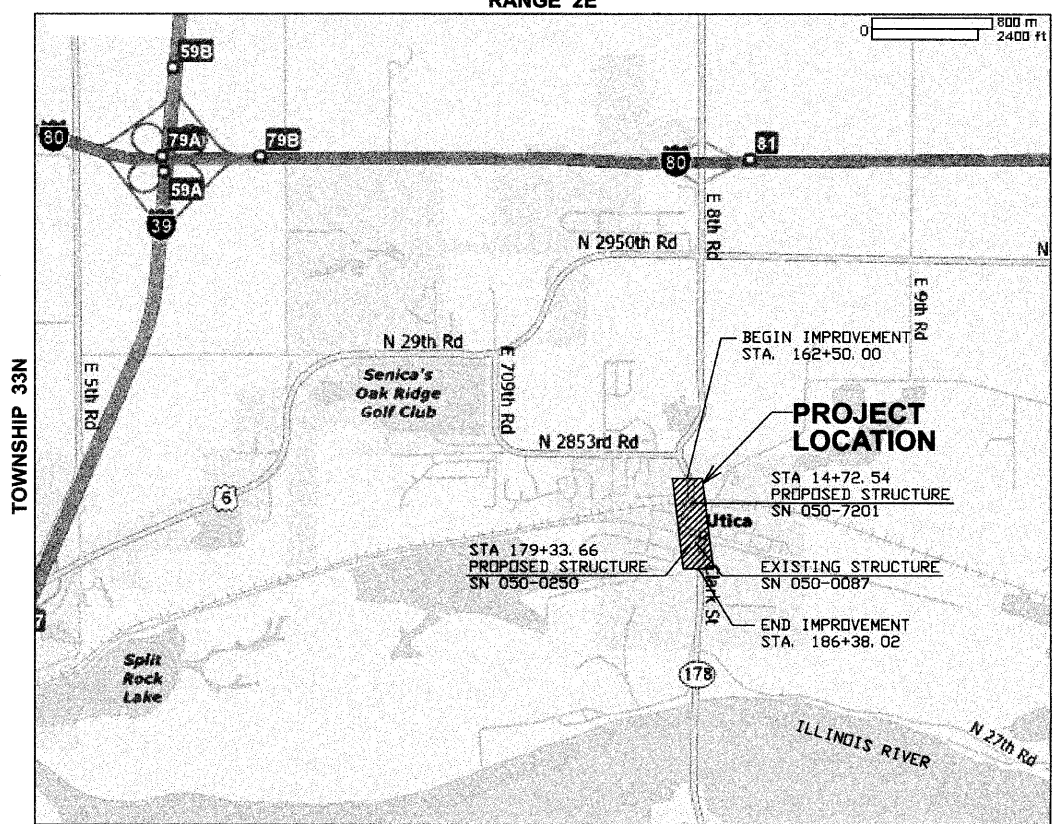


FULL SIZE PLANS HAVE BEEN PREPARED USING STANDARD ENGINEERING SCALES. REDUCED SIZED PLANS WILL NOT CONFORM TO STANDARD SCALES. IN MAKING MEASUREMENTS ON REDUCED PLANS, THE ABOVE SCALES MAY BE USED.

J.U.L.I.E.
 JOINT UTILITY LOCATION INFORMATION FOR EXCAVATION
 1-800-892-0123
 OR 811

PROJECT ENGINEER: JOE KANNEL P.E.
UNIT CHIEF: MICHELE LINDEMANN P.E.

CONTRACT NO. 66547

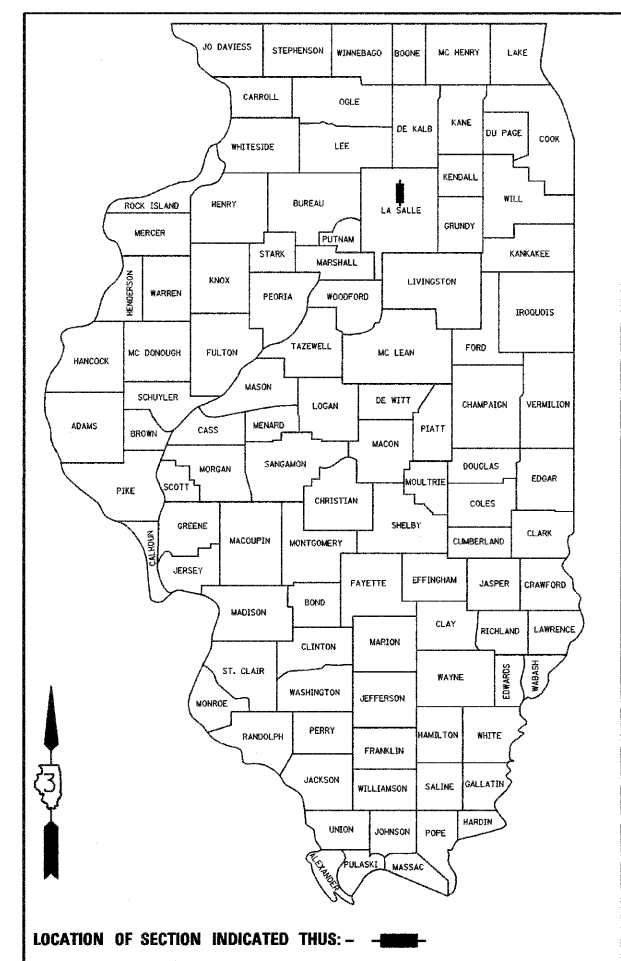


LOCATION MAP

GROSS LENGTH OF IMPROVEMENT = 2388.02' (0.452 MILES)
 NET LENGTH OF IMPROVEMENT = 2388.02' (0.452 MILES)



CHAMLIN ASSOCIATES
 PERU ILLINOIS MORRIS



FAS 1279 (IL 178)
 FUNCTIONAL CLASSIFICATION: RURAL MAJOR COLLECTOR
 ADT = 4700(2009)
 PC = 89.3%
 MU = 4.8%
 SU = 5.9%

STATE OF ILLINOIS
 DEPARTMENT OF TRANSPORTATION
 DIVISION OF HIGHWAYS

SUBMITTED August 30 2010
[Signature]
 DEPUTY DIRECTOR OF HIGHWAYS, REGION ENGINEER

October 1 2010
[Signature]
 acting ENGINEER OF DESIGN AND ENVIRONMENT

October 1 2010
[Signature]
 DIRECTOR OF HIGHWAYS, CHIEF ENGINEER

**PRINTED BY THE AUTHORITY
 OF THE STATE OF ILLINOIS**