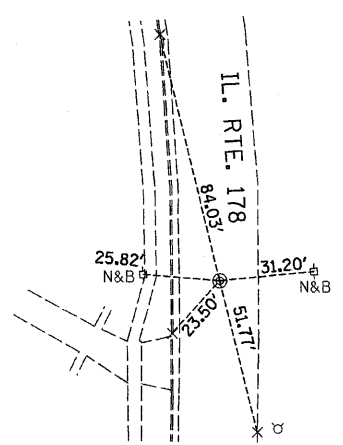
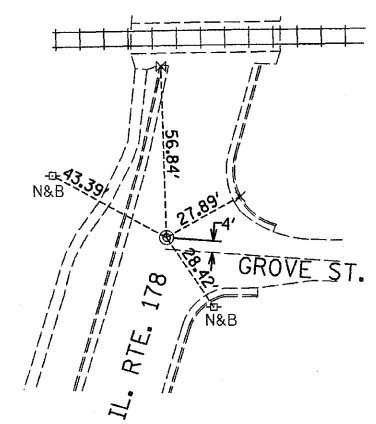


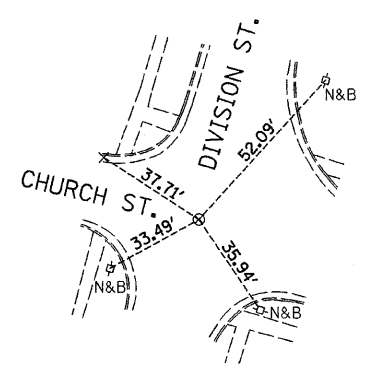
CONTROL POINT #1



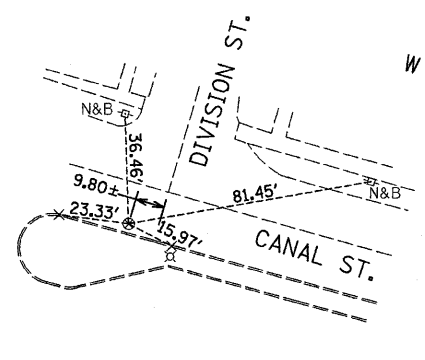
CONTROL POINT #2



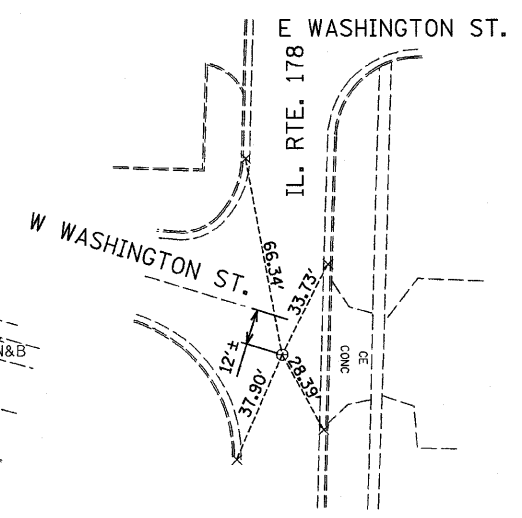
CONTROL POINT #3



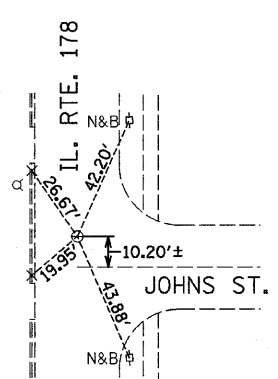
CONTROL POINT #4



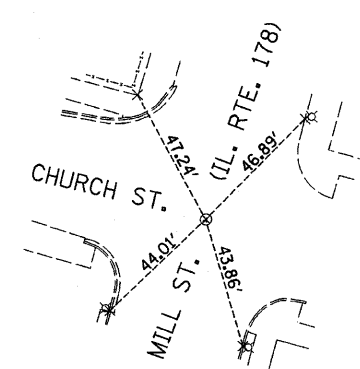
CONTROL POINT #5



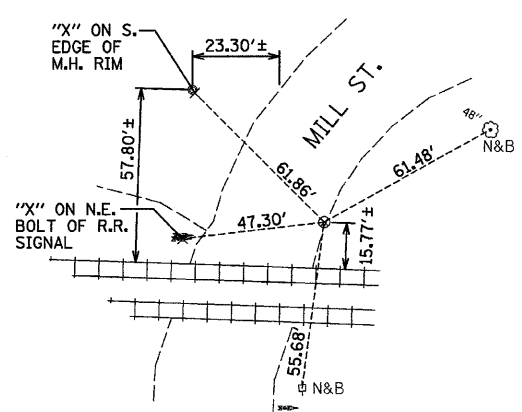
CONTROL POINT #8



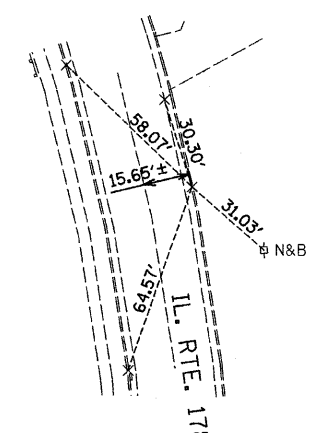
CONTROL POINT #9



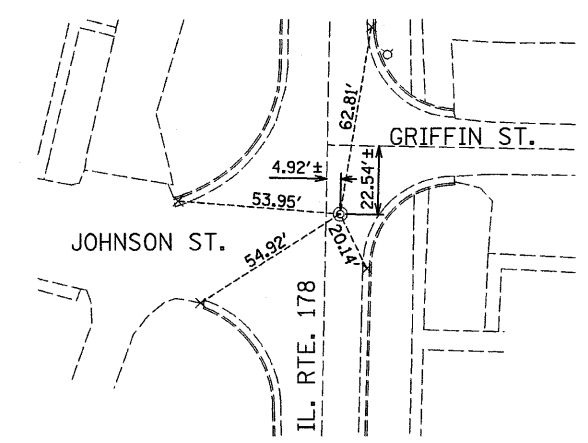
CONTROL POINT #14



CONTROL POINT #15



CONTROL POINT #17



CONTROL POINT #900

LEGEND

- ⊙ CONCRETE NAIL
- ⊗ MAG NAIL
- ⊙ BRASS PLUG
- × CHISELED "X"
- N&B NAIL & BOTTLE CAP

| | | | | | | | | | | | | |
|------------------------------------|---------------------|----------------|---------------|---|--|-----------------------------|----------------------------|-----------------------|-----------------|-------------------|---------------------|-----------------|
| FILE NAME = D366547-SHT-ATB.DGN | USER NAME = --- | DESIGNED - JKC | REVISED - --- | STATE OF ILLINOIS DEPARTMENT OF TRANSPORTATION | IL RTE 178 (RELOCATED) ALIGNMENT & TIES | | | F.A.S. RTE. 1279 | SECTION 6R.B | COUNTY LASALLE | TOTAL SHEETS 190 | SHEET NO. 18 |
| | PLOT SCALE = 1"=50' | DRAWN - NOE | REVISED - --- | | SCALE: 1"=50' | SHEET NO. ___ OF ___ SHEETS | STA. 160+00 TO STA. 176+00 | FED. ROAD DIST. NO. . | ILLINOIS | FED. AID PROJECT | CONTRACT NO. 66547 | |
| | PLOT DATE = 08/10 | CHECKED - JKC | REVISED - --- | | | | | | | | | |
| | | DATE - 08/10 | REVISED - --- | | | | | | | | | |