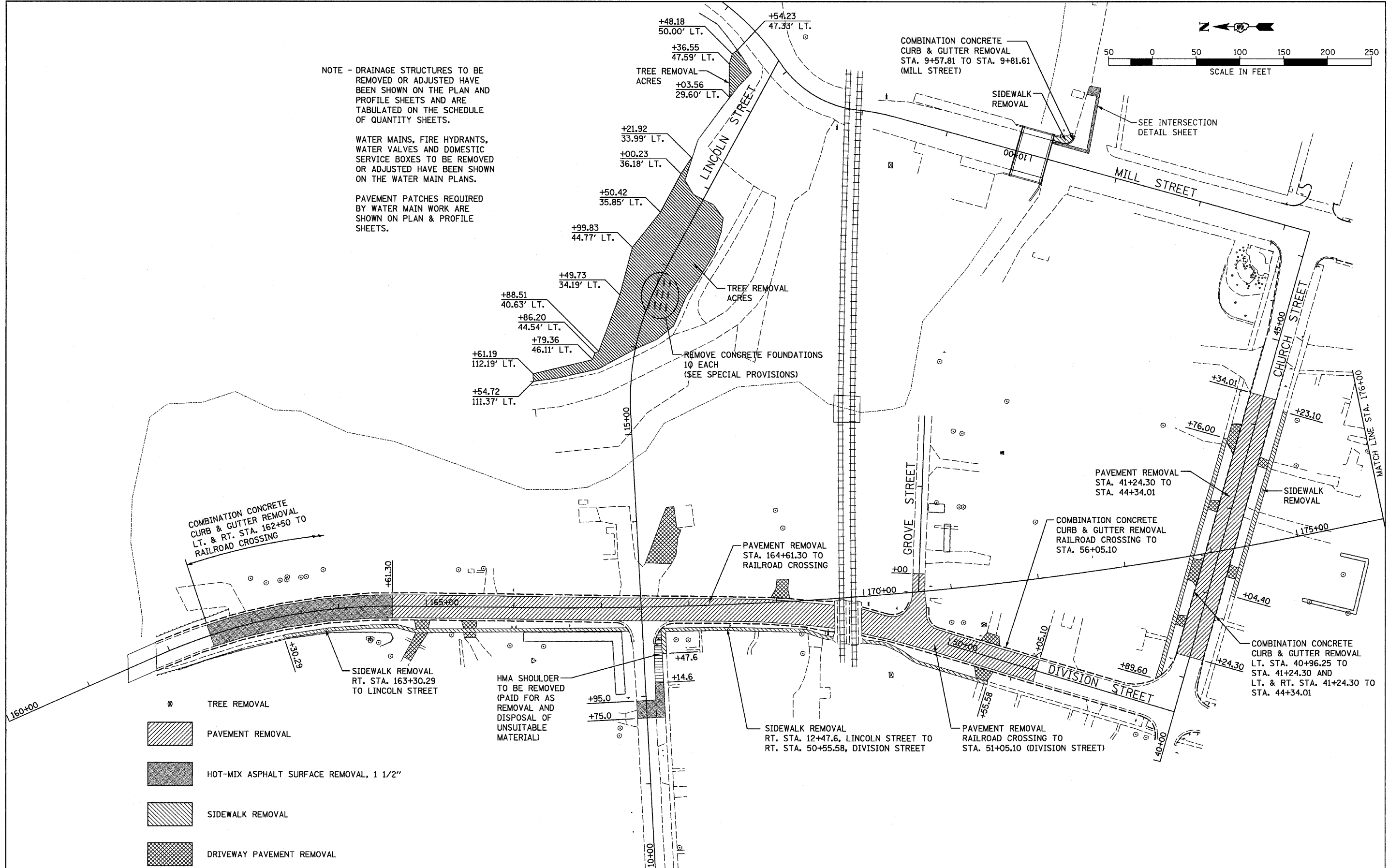
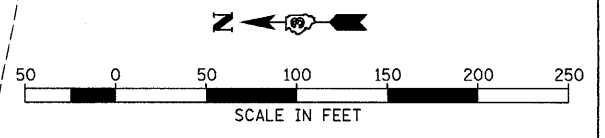


NOTE - DRAINAGE STRUCTURES TO BE REMOVED OR ADJUSTED HAVE BEEN SHOWN ON THE PLAN AND PROFILE SHEETS AND ARE TABULATED ON THE SCHEDULE OF QUANTITY SHEETS.

WATER MAINS, FIRE HYDRANTS, WATER VALVES AND DOMESTIC SERVICE BOXES TO BE REMOVED OR ADJUSTED HAVE BEEN SHOWN ON THE WATER MAIN PLANS.

PAVEMENT PATCHES REQUIRED BY WATER MAIN WORK ARE SHOWN ON PLAN & PROFILE SHEETS.



- ✱ TREE REMOVAL
- [Hatched Box] PAVEMENT REMOVAL
- [Dotted Box] HOT-MIX ASPHALT SURFACE REMOVAL, 1 1/2"
- [Diagonal Lines Box] SIDEWALK REMOVAL
- [Cross-hatched Box] DRIVEWAY PAVEMENT REMOVAL

FILE NAME = D366547-SHT-REM.DGN	USER NAME =	DESIGNED - JKC	REVISED -	STATE OF ILLINOIS DEPARTMENT OF TRANSPORTATION	IL RTE 178 (RELOCATED) REMOVAL PLANS	F.A.S. RTE.	SECTION	COUNTY	TOTAL SHEETS	SHEET NO.	
PLOT SCALE = 1"=50'	DRAWN - LAG	CHECKED - JKC	REVISED -			1279	6R,B	LASALLE	190	19	
PLOT DATE = 08/18	DATE - 08/10	REVISED -	REVISED -			CONTRACT NO. 66547					
SCALE: 1"=50'						SHEET NO. 19 OF 19 SHEETS		STA. 160+00 TO STA. 176+00			
FED. ROAD DIST. NO. ILLINOIS FED. AID PROJECT											