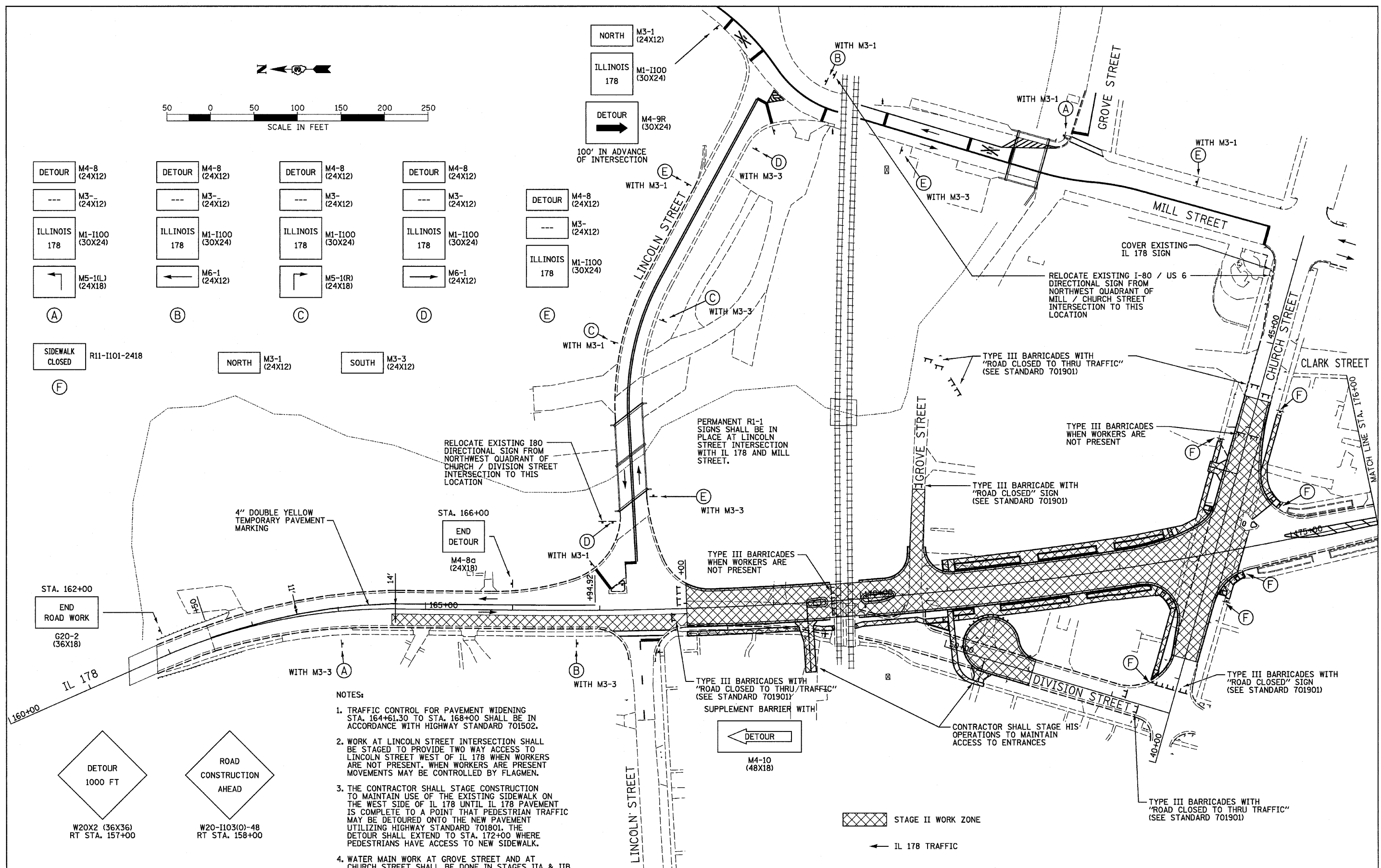
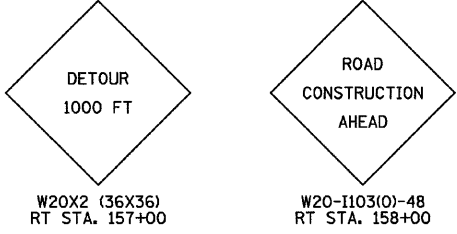


- | | | | |
|------------------------------|------------------------------|------------------------------|------------------------------|
| DETOUR M4-8 (24X12) | DETOUR M4-8 (24X12) | DETOUR M4-8 (24X12) | DETOUR M4-8 (24X12) |
| M3- (24X12) | M3- (24X12) | M3- (24X12) | M3- (24X12) |
| ILLINOIS 178 M1-I100 (30X24) | ILLINOIS 178 M1-I100 (30X24) | ILLINOIS 178 M1-I100 (30X24) | ILLINOIS 178 M1-I100 (30X24) |
| M5-1(L) (24X18) | M6-1 (24X12) | M5-1(R) (24X18) | M6-1 (24X12) |

- | | | | | |
|-----------------------------------|--------------------|--------------------|-----|-----|
| (A) | (B) | (C) | (D) | (E) |
| SIDEWALK CLOSED R11-I101-2418 (F) | NORTH M3-1 (24X12) | SOUTH M3-3 (24X12) | | |



- NOTES:
- TRAFFIC CONTROL FOR PAVEMENT WIDENING STA. 164+61.30 TO STA. 168+00 SHALL BE IN ACCORDANCE WITH HIGHWAY STANDARD 701502.
 - WORK AT LINCOLN STREET INTERSECTION SHALL BE STAGED TO PROVIDE TWO WAY ACCESS TO LINCOLN STREET WEST OF IL 178 WHEN WORKERS ARE NOT PRESENT. WHEN WORKERS ARE PRESENT MOVEMENTS MAY BE CONTROLLED BY FLAGMEN.
 - THE CONTRACTOR SHALL STAGE CONSTRUCTION TO MAINTAIN USE OF THE EXISTING SIDEWALK ON THE WEST SIDE OF IL 178 UNTIL IL 178 PAVEMENT IS COMPLETE TO A POINT THAT PEDESTRIAN TRAFFIC MAY BE DETOURED ONTO THE NEW PAVEMENT UTILIZING HIGHWAY STANDARD 701801. THE DETOUR SHALL EXTEND TO STA. 172+00 WHERE PEDESTRIANS HAVE ACCESS TO NEW SIDEWALK.
 - WATER MAIN WORK AT GROVE STREET AND AT CHURCH STREET SHALL BE DONE IN STAGES IIA & IIB



FILE NAME = D366547-SHT-STAGE2A.DGN	USER NAME = ---	DESIGNED - JKC	REVISED - ---	STATE OF ILLINOIS DEPARTMENT OF TRANSPORTATION	IL RTE 178 (RELOCATED) STAGE IIA CONSTRUCTION AND TRAFFIC CONTROL PLANS			F.A.S. RTE. 1279	SECTION 6R.B	COUNTY LASALLE	TOTAL SHEETS 190	SHEET NO. 39
PLOT SCALE = 1"=50'	CHECKED - JKC	DATE - 08/10	REVISED - ---		SCALE: 1"=50'	SHEET NO. ___ OF ___ SHEETS	STA. 160+00 TO STA. 176+00	FED. ROAD DIST. NO. - ILLINOIS	FED. AID PROJECT	CONTRACT NO. 66547		
PLOT DATE = 08/10	DATE - 08/10	REVISED - ---	REVISED - ---									