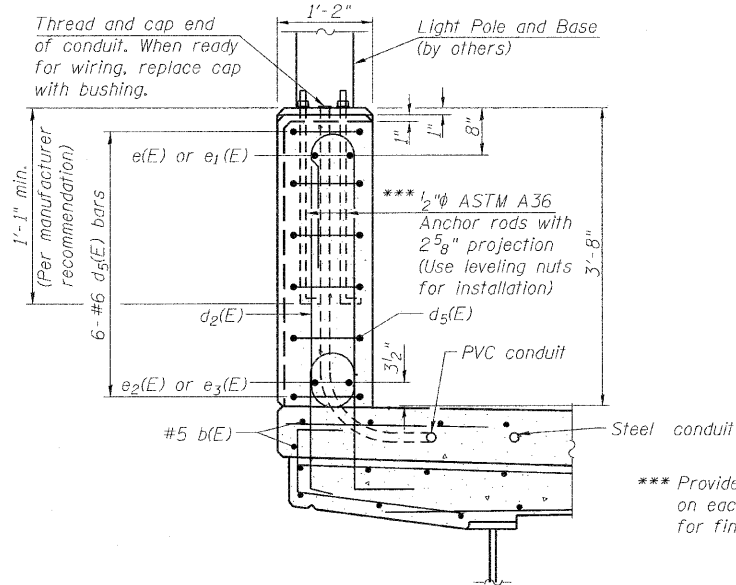
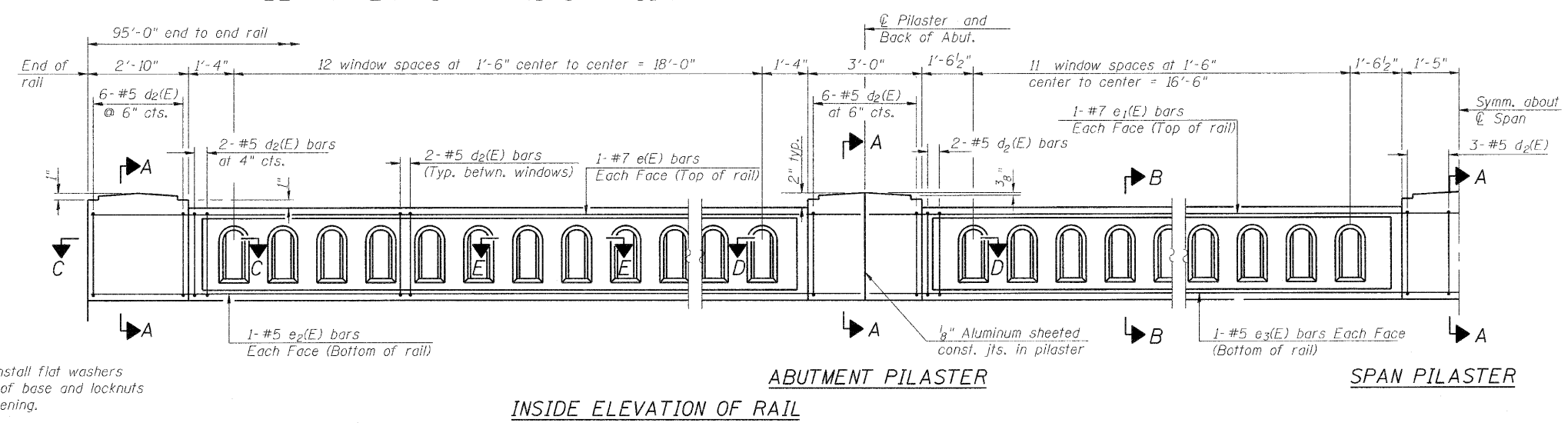


STATE OF ILLINOIS  
DEPARTMENT OF TRANSPORTATION

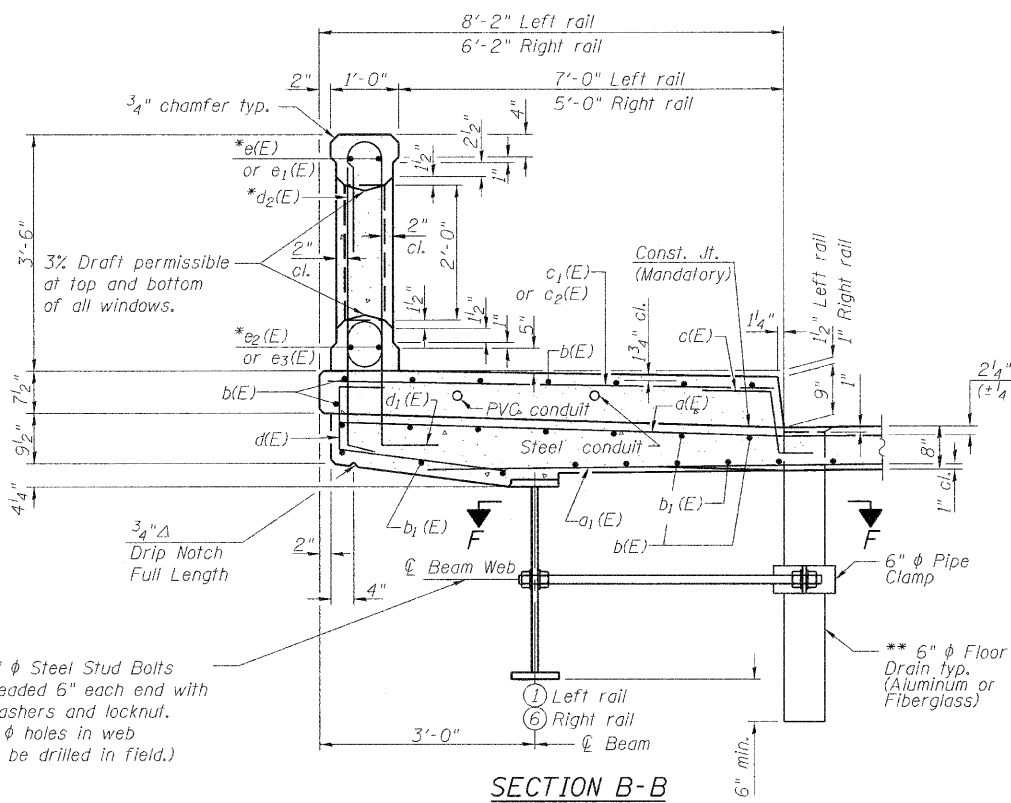


SECTION A-A

(Conduit not required at Abutment pilasters)  
Span pilaster shown. Rail end pilasters and abutment pilasters are similar. See Section C-C, Section D-D, and notes below.



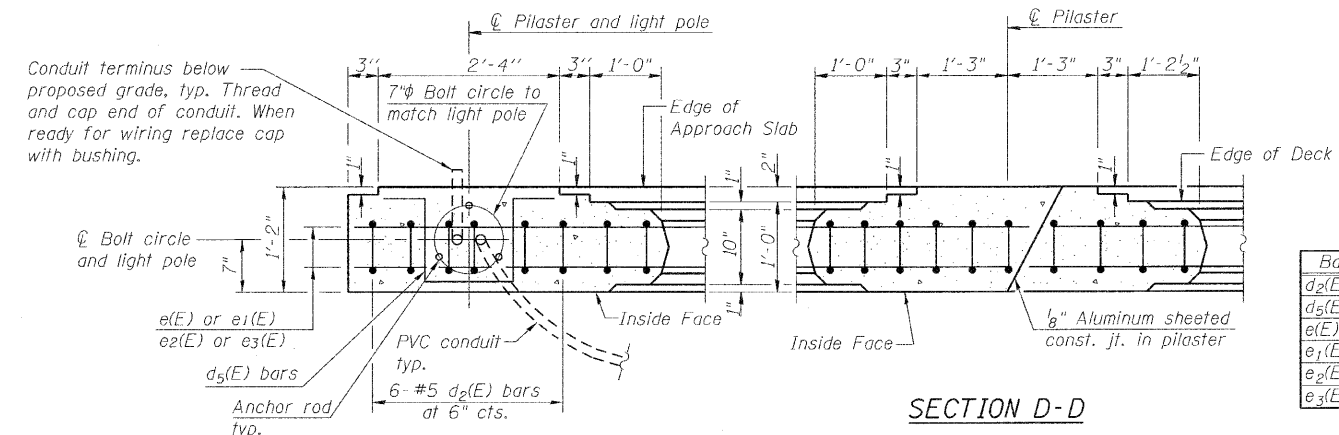
INSIDE ELEVATION OF RAIL



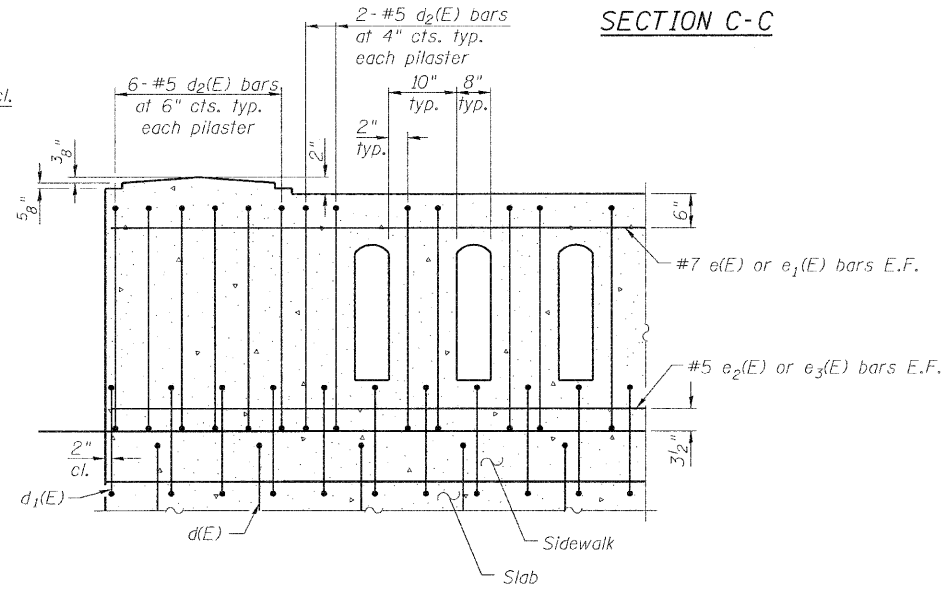
SECTION B-B

\* Bars e(E) thru e3(E) and d2(E) are included in the cost of Concrete Bridge Rail, Sidewalk Mounted. Order e(E) and e2(E) bars full length. Cut to fit skew at rail joint in pilaster and use remainder of bars at other end of rail.  
\*\* Floor drains shall be attached to the nearest beam. See Superstructure Cross Section on sheet 7 of 20.

DESIGNED	CMF
CHECKED	TMM
DRAWN	RNH
CHECKED	TMM



SECTION C-C



TYPICAL REINFORCEMENT PLACEMENT  
(Inside Face)

BAR LIST FOR TWO SECTIONS OF RAIL

Bar	No.	Size	Length	Shape
d2(E)	276	#5	8'-8"	
d5(E)	36	#6	4'-0"	
e(E)	4	#7	49'-6"	
e1(E)	4	#7	44'-9"	
e2(E)	4	#5	49'-6"	
e3(E)	4	#5	44'-9"	

SECTION D-D

Notes:  
All concrete for rail wall shall be Class BS according to Article 1020.04 of the Standard Specifications. Surface of railing shall receive a rubbed finish according to Article 503.15(b) of the Standard Specifications.  
All parts of the rail including concrete and reinforcing will be paid for at the contract unit price per foot for Concrete Bridge Rail, Sidewalk Mounted. Holes and recesses must be formed or cored. Drilling is not permitted. Aluminum sheets shall be according to ASTM B209 alloy 3003-H14. See sheet 9 of 20 for floor drain details, and sheet 1 of 20 for floor drain locations.  
Anchor rods provided and installed by the Contractor, and paid for as Anchor Bolts, 1/2". Conduit shown is provided and installed by the Contractor. Coordinate location and termini of conduit and anchor rods with the installer of the lighting. See lighting plans for additional details.  
Anchor rods for the light pole fixtures shall be equally spaced within the circular pattern as shown. A line perpendicular to the bridge rail and extending from the center of the pattern toward the outside face shall pass through one of the bolts.  
See Sheet 9 of 20 for Section E-E, details for bar d2(E) and bar d5(E), and Bill of Material.  
Protective Coat shall be applied to all exterior surfaces of the rail and as specified in Article 503.19 of the Standard Specifications.  
Conduit shall have 1 1/2" min. clearance to all reinforcement.

CONCRETE BRIDGE RAILING,  
SIDEWALK MOUNTED  
STRUCTURE NO. 050-0250

McDonough-Whitlow, P.C.  
Consulting Engineers & Land Surveyors  
138 East Wood Street  
Hillsboro, IL 62049  
Phone: 217.532.9233  
Fax: 217.532.6300  
PROFESSIONAL DESIGN NO. 184-002754

SHEET NO. 8 20 SHEETS	F.A.S. RTE.	SECTION	COUNTY	TOTAL SHEETS	SHEET NO.
	1279	6R, B	LASALLE	190	110
FED. ROAD DIST. NO. [ILLINOIS]			FED. AID PROJECT		
CONTRACT NO.				66547	