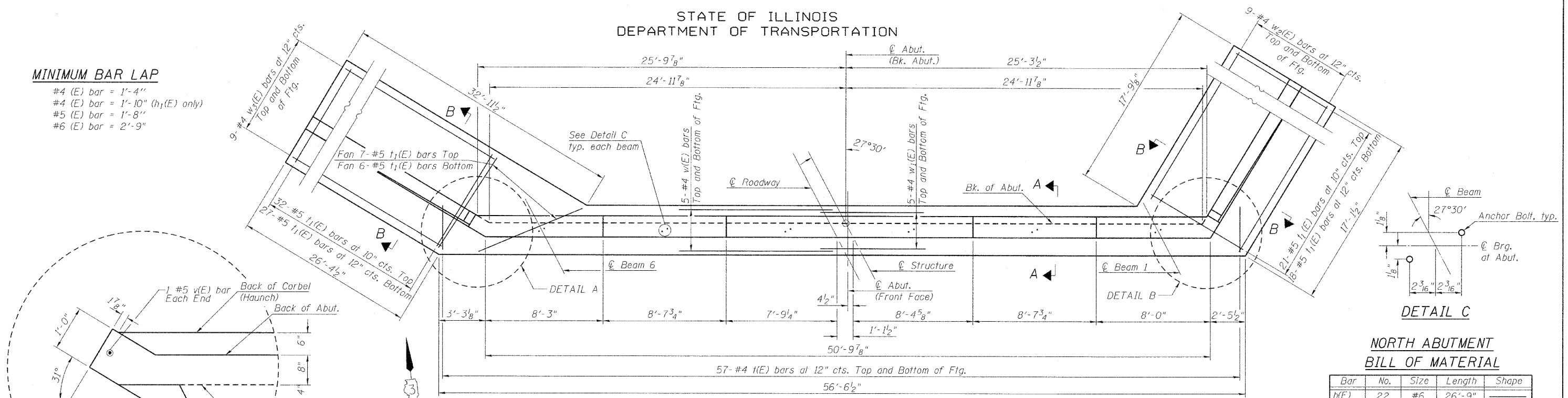


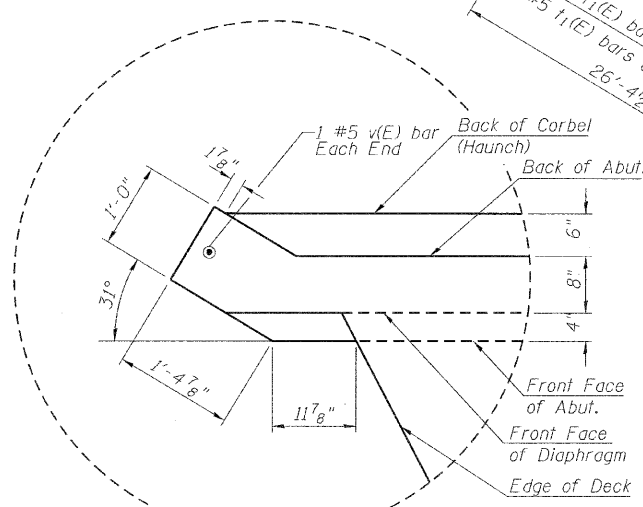
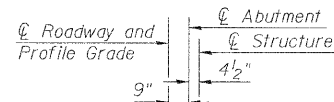
STATE OF ILLINOIS
DEPARTMENT OF TRANSPORTATION

MINIMUM BAR LAP

- #4 (E) bar = 1'-4"
- #4 (E) bar = 1'-10" ($h_1(E)$ only)
- #5 (E) bar = 1'-8"
- #6 (E) bar = 2'-9"

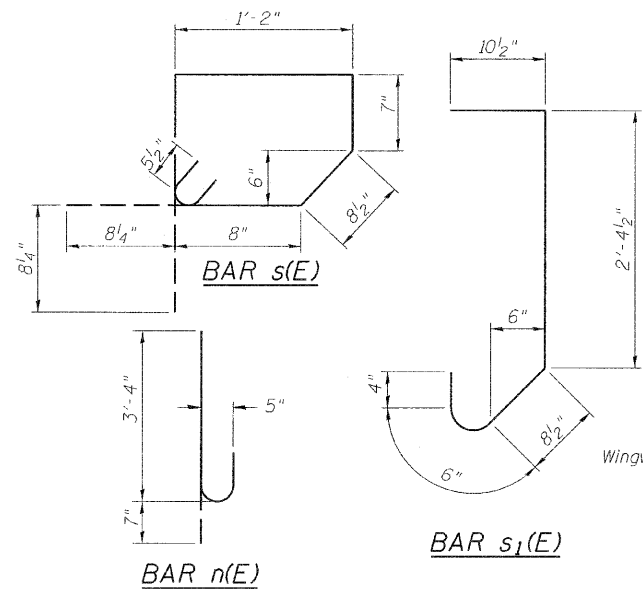


PLAN NORTH ABUTMENT

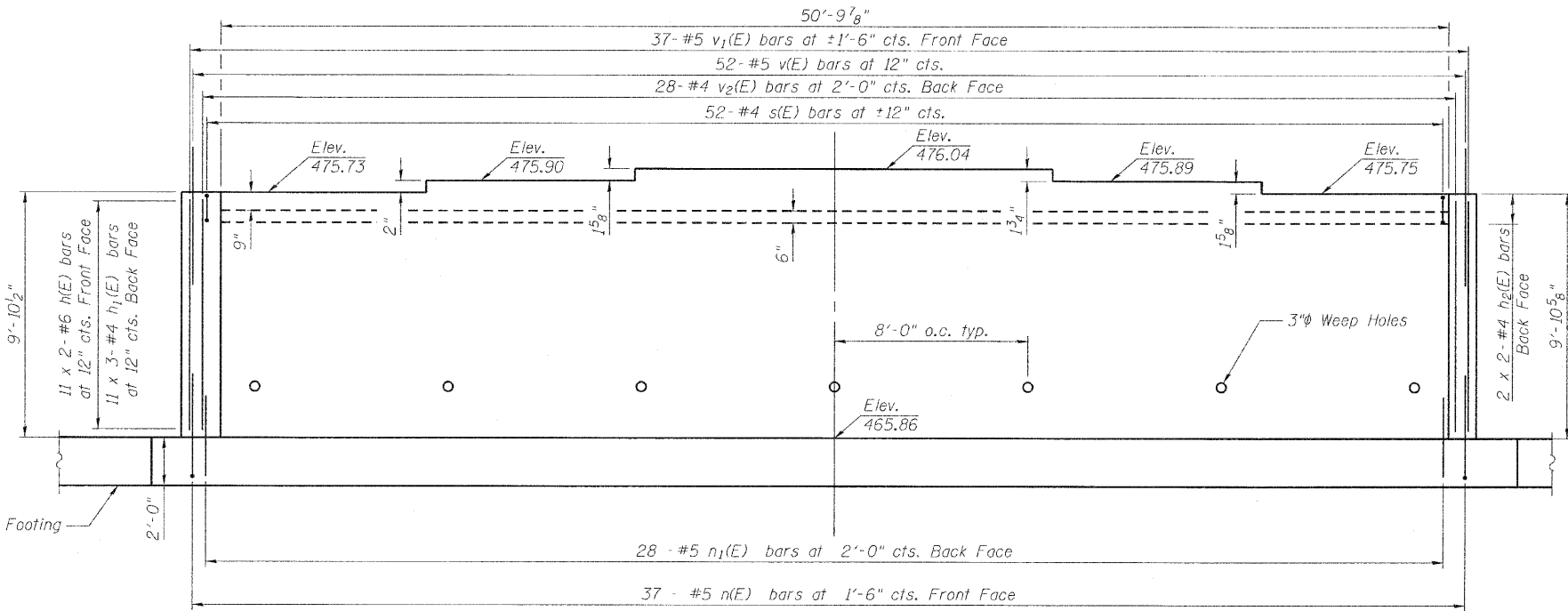


DETAIL A

(Includes view of diaphragm poured integrally with slab.)

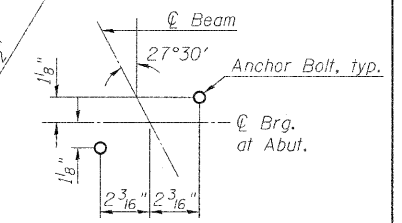


| | |
|----------|-----|
| DESIGNED | CMF |
| CHECKED | TMM |
| DRAWN | RNH |
| CHECKED | TMM |



ELEVATION NORTH ABUTMENT

(Dimensions at Front Face of Abutment)



DETAIL C

**NORTH ABUTMENT
BILL OF MATERIAL**

| Bar | No. | Size | Length | Shape |
|-------------------------------------|-----|------|-----------|-------|
| $h(E)$ | 22 | #6 | 26'-9" | — |
| $h_1(E)$ | 33 | #4 | 18'-7" | — |
| $h_2(E)$ | 4 | #4 | 26'-6" | — |
| $n(E)$ | 37 | #5 | 3'-11" | U |
| $n_1(E)$ | 28 | #5 | 3'-0" | — |
| $s(E)$ | 52 | #4 | 5'-7" | U |
| $s_1(E)$ | 53 | #5 | 4'-9 1/2" | U |
| $t(E)$ | 114 | #4 | 3'-5" | — |
| $t_1(E)$ | 111 | #5 | 8'-1" | — |
| $v(E)$ | 54 | #5 | 4'-6" | — |
| $v_1(E)$ | 37 | #5 | 9'-7" | — |
| $v_2(E)$ | 28 | #4 | 9'-7" | — |
| $w(E)$ | 10 | #4 | 30'-0" | — |
| $w_1(E)$ | 10 | #4 | 27'-10" | — |
| $w_2(E)$ | 18 | #4 | 16'-11" | — |
| $w_3(E)$ | 18 | #4 | 26'-3" | — |
| Concrete Structures | | | Cu. Yd. | 33.9 |
| Reinforcement Bars, Epoxy Coated | | | Pound | 4,970 |
| Rock Excavation for Structures | | | Cu. Yd. | 5 |
| Porous Granular Embankment, Special | | | Cu. Yd. | 91 |

Notes:
Backfill shall be placed behind the abutment after the superstructure has been poured and falsework removed. See Article 502.10 of the Standard Specifications. See sheet 15 of 20 for Detail B and Section A-A. Pour steps monolithically with abut. wall. See sheet 12 of 20 for layout of bar $s_1(E)$. Stagger laps of $w(E)$ and $w_1(E)$ bars in Top and Bottom of Fig. See sheet 16 of 20 for Section B-B. Bars indicated thus 11 x 2-#6 etc. indicates 11 lines of bars with 2 lengths per line.

**NORTH ABUTMENT
STRUCTURE NO. 050-0250**

McDonough-Whitlow, P.C.
Consulting Engineers & Land Surveyors
138 East Wood Street
Hillsboro, IL 62049
Phone: 217.532.9233
Fax: 217.532.6300
PROFESSIONAL DESIGN No. 184-002754

| | | | | | |
|------------------------------|-------------|---------|------------------|--------------|-----------|
| SHEET NO. 14 20 SHEETS | F.A.S. RTE. | SECTION | COUNTY | TOTAL SHEETS | SHEET NO. |
| | 1279 | 6R, B | LASALLE | 190 | 116 |
| FED. ROAD DIST. NO. ILLINOIS | | | FED. AID PROJECT | | |
| | | | CONTRACT NO. | | 66547 |