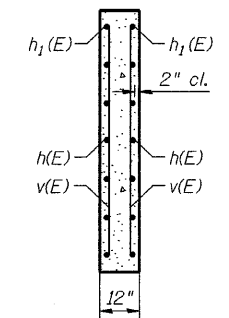
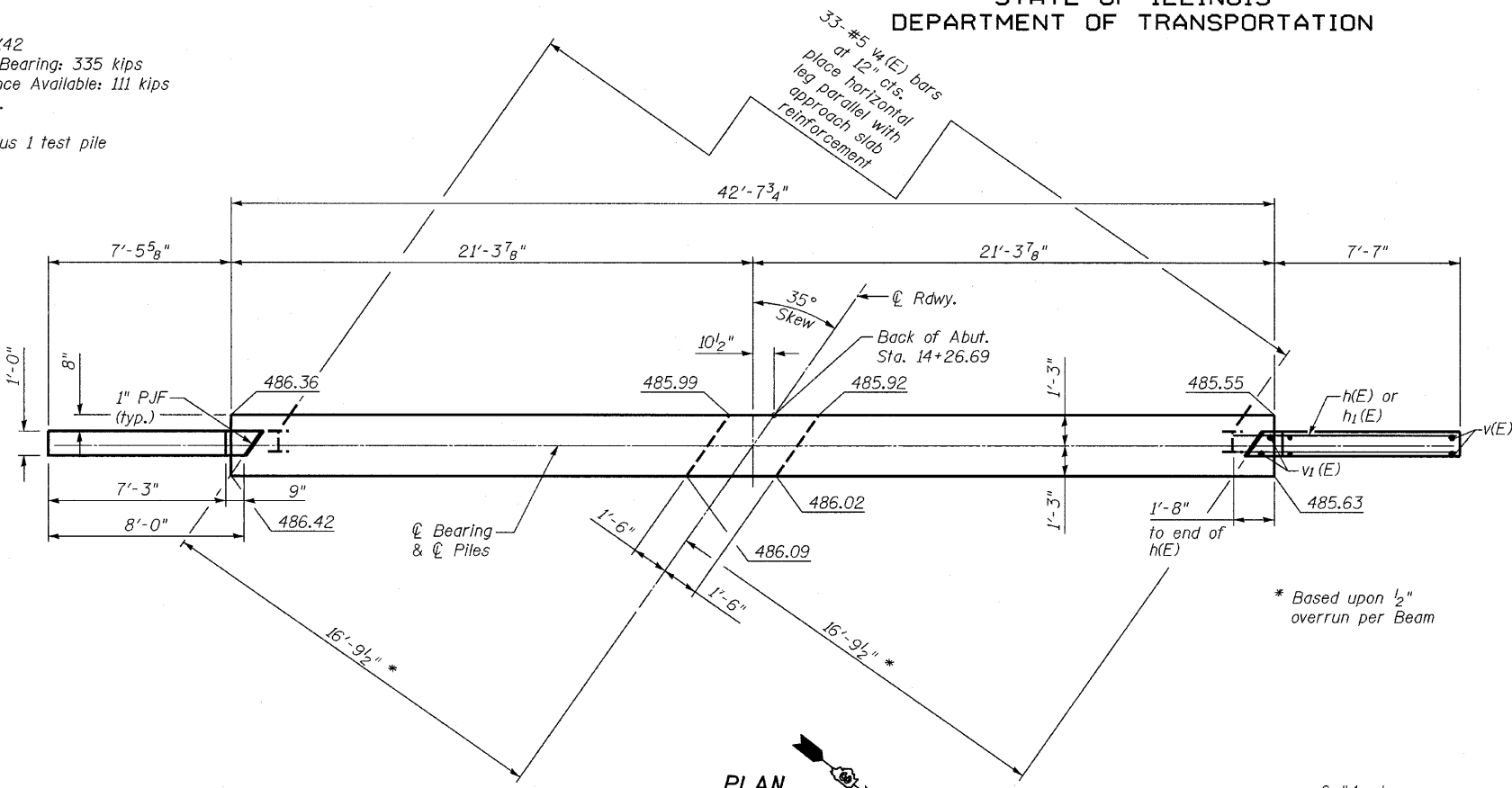


STATE OF ILLINOIS  
DEPARTMENT OF TRANSPORTATION

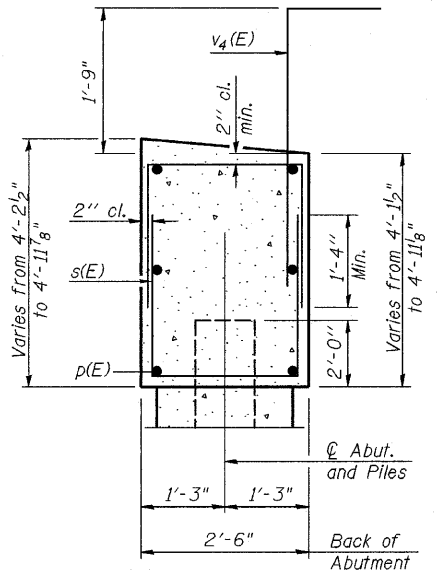
**PILE DATA**

Type: Steel HP10X42  
Nominal Required Bearing: 335 kips  
Allowable Resistance Available: 111 kips  
Est. length: 16 Ft.

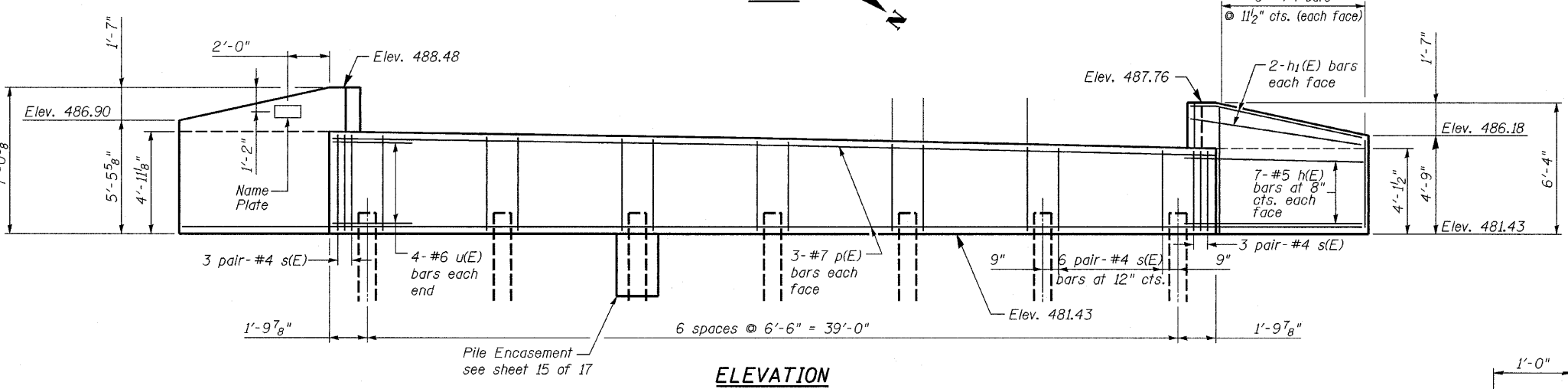
No. required: 6 plus 1 test pile



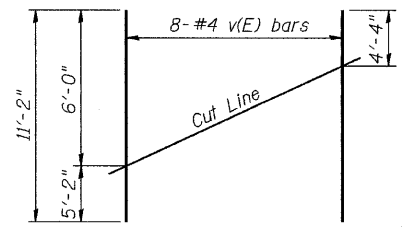
SEC. THRU WINGWALL



SEC. THRU ABUT.

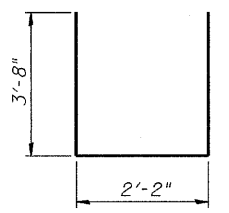


ELEVATION

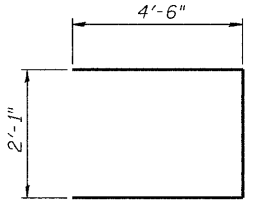


FIELD CUTTING DIAGRAM

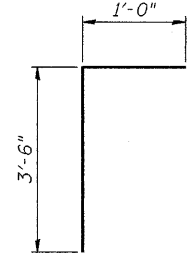
Order v(E) full length. Cut as shown and use remainder of bars in opposite wingwall.



BAR s(E)



BAR u(E)



BAR v4(E)

**BILL OF MATERIAL**

Bar	No.	Size	Length	Shape
h(E)	24	#5	9'-1"	—
h1(E)	8	#5	8'-0"	—
p(E)	6	#7	42'-4"	—
s(E)	84	#4	9'-6"	U
u(E)	8	#6	11'-1"	U
v(E)	16	#4	11'-2"	—
v1(E)	4	#4	6'-0"	—
v4(E)	33	#5	4'-6"	L
Structure Excavation		Cu. Yd.	29	
Concrete Structures		Cu. Yd.	21.5	
Reinforcement Bars, Epoxy Coated		Pound	1770	
Furnishing Steel Piles HP10X42		Foot	96	
Driving Piles		Foot	96	
Test Pile, Steel HP10X42		Each	1	
Concrete Encasement		Cu. Yd.	2.5	

For details of piles and Concrete Encasement, see sheet 15 of 17.

**WEST ABUTMENT DETAIL  
STRUCTURE NO. 050-7201**

DESIGNED	JKC
CHECKED	GAE
DRAWN	NV
CHECKED	JKC

SHEET NO. 12	F.A.S. RTE.	SECTION	COUNTY	TOTAL SHEETS	SHEET NO.
	1279	6R, B	LA SALLE	190	134
17 SHEETS	SN 050-7201		CONTRACT NO. 66547		
	FED. ROAD DIST. NO.	ILLINOIS	FED. AID PROJECT		

CHAMLIN & ASSOCIATES  
PERU ILLINOIS MORRIS