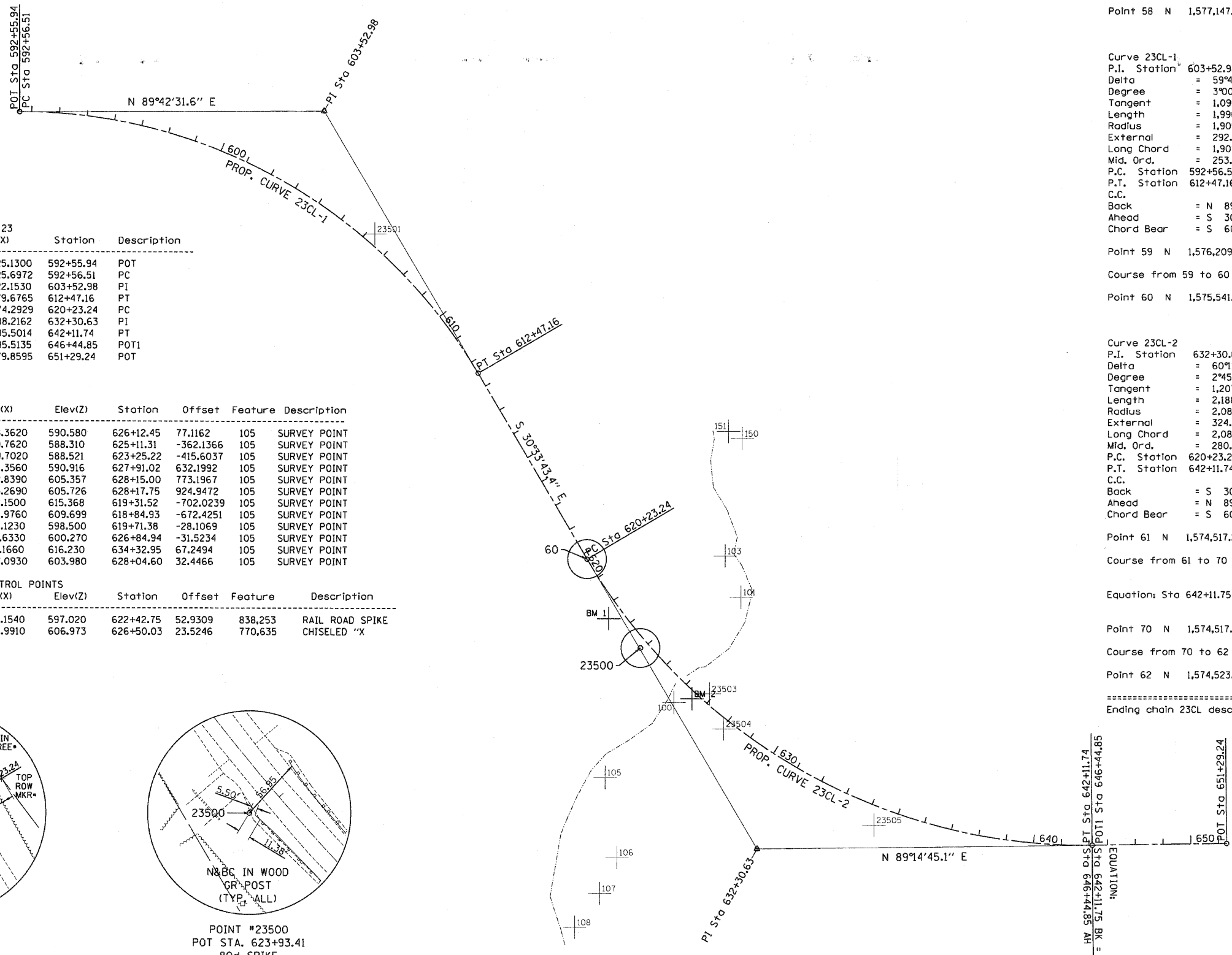


ALIGNMENT, TIES, AND BENCHMARKS



ALIGNMENT COORDINATES IL 23

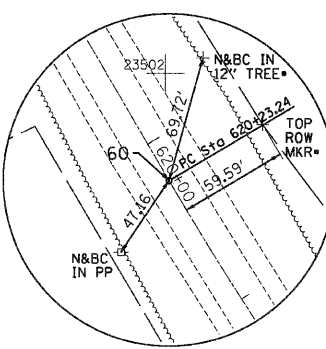
| Point# | North(Y) | East(X) | Station | Description |
|--------|--------------|-------------|-----------|-------------|
| 57 | 1577147.8700 | 858225.1300 | 592+55.94 | POT |
| 58 | 1577147.8729 | 858225.6972 | 592+56.51 | PC |
| PI | 1577153.4461 | 859322.1530 | 603+52.98 | PI |
| 59 | 1576209.2987 | 859879.6765 | 612+47.16 | PT |
| 60 | 1575541.0291 | 860274.2929 | 620+23.24 | PC |
| PI | 1574501.3714 | 860888.2162 | 632+30.63 | PI |
| 61 | 1574517.2624 | 862095.5014 | 642+11.74 | PT |
| 70 | 1574517.2626 | 862095.5135 | 646+44.85 | POT1 |
| 62 | 1574523.6380 | 862579.8595 | 651+29.24 | POT |

HORIZONTAL CONTROL POINTS

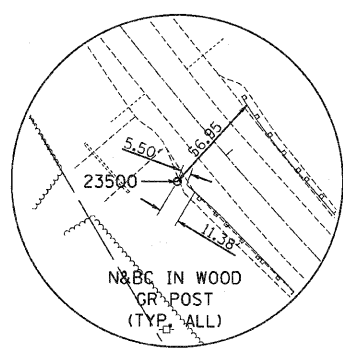
| Point# | North(Y) | East(X) | Elev(Z) | Station | Offset | Feature | Description |
|--------|--------------|-------------|---------|-----------|-----------|---------|--------------|
| 100 | 1575026.3130 | 860588.3620 | 590.580 | 626+12.45 | 77.1162 | 105 | SURVEY POINT |
| 101 | 1575405.0380 | 860829.7620 | 588.310 | 625+11.31 | -362.1366 | 105 | SURVEY POINT |
| 103 | 1575553.8260 | 860769.7020 | 588.521 | 623+25.22 | -415.6037 | 105 | SURVEY POINT |
| 106 | 1574469.9200 | 860384.3560 | 590.916 | 627+91.02 | 632.1992 | 105 | SURVEY POINT |
| 107 | 1574339.0630 | 860322.8390 | 605.357 | 628+15.00 | 773.1967 | 105 | SURVEY POINT |
| 108 | 1574216.5050 | 860233.2690 | 605.726 | 628+17.75 | 924.9472 | 105 | SURVEY POINT |
| 150 | 1575976.9730 | 860832.1500 | 615.368 | 619+31.52 | -702.0239 | 105 | SURVEY POINT |
| 151 | 1576002.0360 | 860782.9760 | 609.699 | 618+84.93 | -672.4251 | 105 | SURVEY POINT |
| 23502 | 1575599.9810 | 860272.1230 | 598.500 | 619+71.38 | -28.1069 | 105 | SURVEY POINT |
| 23503 | 1575057.4780 | 860715.6330 | 600.270 | 626+84.94 | -31.5234 | 105 | SURVEY POINT |
| 23505 | 1574588.2000 | 861309.1660 | 616.230 | 634+32.95 | 67.2494 | 105 | SURVEY POINT |
| 23504 | 1574931.9370 | 860767.0930 | 603.980 | 628+04.60 | 32.4466 | 105 | SURVEY POINT |

BENCHMARK AND VERTICAL CONTROL POINTS

| Point# | North(Y) | East(X) | Elev(Z) | Station | Offset | Feature | Description |
|--------|--------------|-------------|---------|-----------|---------|---------|-----------------|
| BM1 | 1575326.6830 | 860353.1540 | 597.020 | 622+42.75 | 52.9309 | 838,253 | RAIL ROAD SPIKE |
| BM2 | 1575039.5800 | 860652.9910 | 606.973 | 626+50.03 | 23.5246 | 770,635 | CHISELED "X" |



POINT #60
PC STA. 620+23.24
MAG NAIL



POINT #23500
POT STA. 623+93.41
80d SPIKE

Chain 23CL contains:
57 58 CUR 23CL-1 59 60 CUR 23CL-2 61 70 62
Beginning chain 23CL description
=====

Point 57 N 1,577,147.8700 E 858,225.1300 Sta 592+55.94

Course from 57 to 58 N 89°42' 31.6" E Dist 0.5672

Point 58 N 1,577,147.8729 E 858,225.6972 Sta 592+56.51

Curve Data

Curve 23CL-1
P.I. Station 603+52.98 N 1,577,153.4461 E 859,322.1530
Delta = 59°43' 45.03" (RT)
Degree = 3°00' 01.75"
Tangent = 1,096.4700
Length = 1,990.6500
Radius = 1,909.5500
External = 292.4100
Long Chord = 1,901.7279
Mid. Ord. = 253.5793
P.C. Station 592+56.51 N 1,577,147.8729 E 858,225.6972
P.T. Station 612+47.16 N 1,576,209.2987 E 859,879.6765
C.C. N 1,575,238.3475 E 858,235.4031
Back = N 89°42' 31.6" E
Ahead = S 30°33' 43.4" E
Chord Bear = S 60°25' 35.9" E

Point 59 N 1,576,209.2987 E 859,879.6765 Sta 612+47.16

Course from 59 to 60 S 30°33' 43.4" E Dist 776.0840

Point 60 N 1,575,541.0291 E 860,274.2929 Sta 620+23.24

Curve Data

Curve 23CL-2
P.I. Station 632+30.63 N 1,574,501.3714 E 860,888.2162
Delta = 60°11' 31.36" (LT)
Degree = 2°45' 01.39"
Tangent = 1,207.3898
Length = 2,188.4939
Radius = 2,083.1900
External = 324.6037
Long Chord = 2,089.2340
Mid. Ord. = 280.8427
P.C. Station 620+23.24 N 1,575,541.0291 E 860,274.2929
P.T. Station 642+11.74 N 1,574,517.2624 E 862,095.5014
C.C. N 1,576,600.2720 E 862,068.0836
Back = S 30°33' 43.4" E
Ahead = N 89°14' 45.1" E
Chord Bear = S 60°39' 29.2" E

Point 61 N 1,574,517.2624 E 862,095.5014 Sta 642+11.74

Course from 61 to 70 N 89°14' 45.1" E Dist 0.0121

Equation: Sta 642+11.75 (BK) = Sta 646+44.85 (AH) -----
End Region 1
Begin Region 2

Point 70 N 1,574,517.2626 E 862,095.5135 Sta 646+44.85

Course from 70 to 62 N 89°14' 45.1" E Dist 484.3879

Point 62 N 1,574,523.6380 E 862,579.8595 Sta 651+29.24

=====

Ending chain 23CL description