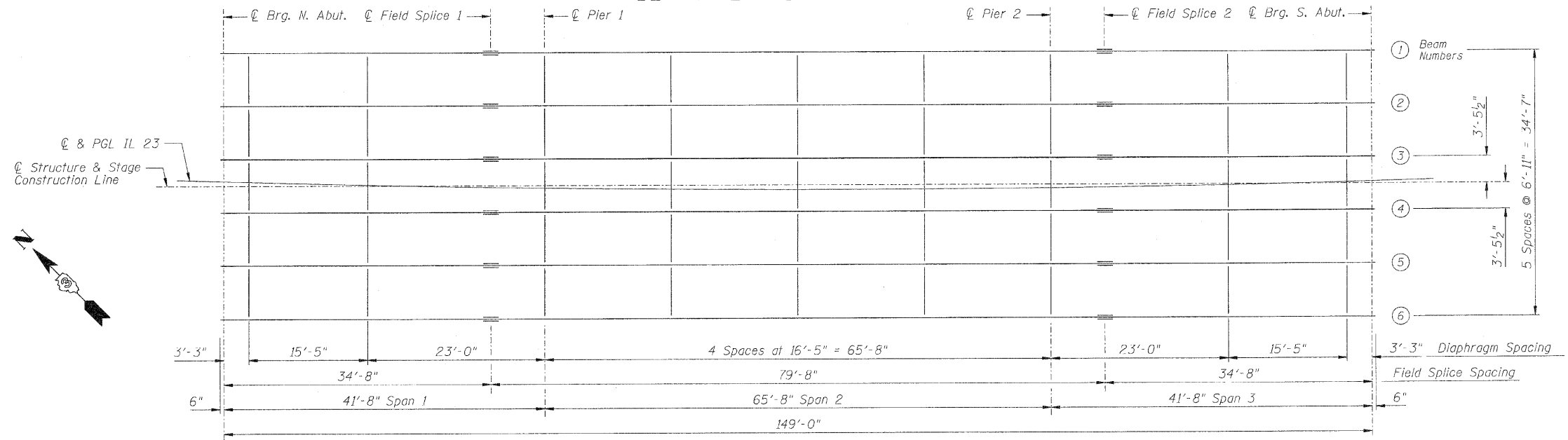
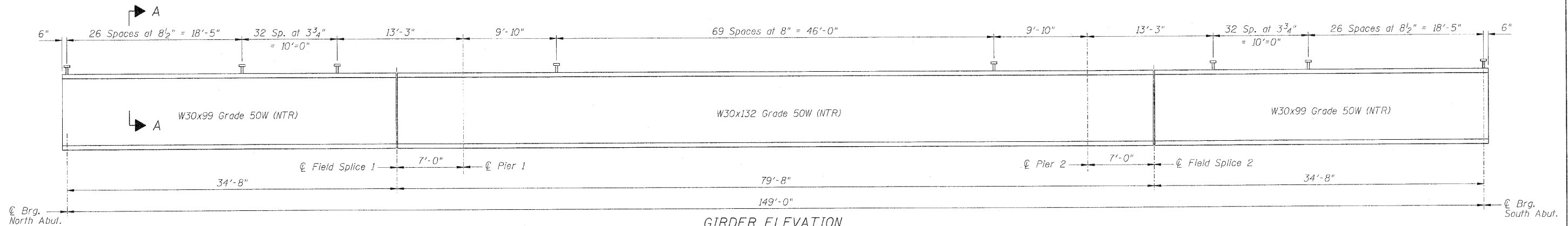


STATE OF ILLINOIS
DEPARTMENT OF TRANSPORTATION



FRAMING PLAN



GIRDER ELEVATION

Load carrying components designated "NTR" shall conform to the Supplemental Requirements for Notch Toughness, Zone 2.

Notes:

All dimensions are horizontal.

End of girders, bearing stiffeners and connection plates shall be vertical.

Work this sheet with Sheets 15 & 16 of 26.

TOP OF BEAM ELEVATIONS

(For Fabrication Only)

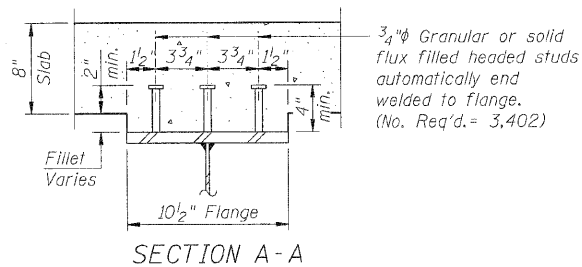
Beam	℄ Brg. N. Abut.	℄ Field Splice 1	℄ Pier 1	℄ Pier 2	℄ Field Splice 2	℄ Brg. S. Abut.
1	601.642	601.748	601.794	602.224	602.270	602.618
2	602.058	602.164	602.210	602.638	602.684	603.031
3	602.474	602.580	602.626	603.054	603.099	603.444
4	602.891	602.995	603.041	603.468	603.513	603.857
5	603.307	603.411	603.457	603.882	603.927	604.271
6	603.723	603.827	603.872	604.296	604.341	604.684

The elevation shown at the ℄ Field Splice 1 and ℄ Field Splice 2 is the Top of Beam Elevation for the W30x132.

BILL OF MATERIAL

Item	Unit	Total
Stud Shear Connectors	Each	3,402

FRAMING PLAN
STRUCTURE NO. 053-0189



Note:

All cross frames or diaphragms shall be installed as steel is erected and secured with erection pins and bolts except as otherwise noted. Individual cross frames or diaphragms at supports may be temporarily disconnected to install bearing anchor rods.

ZROKA engineering
Zroka Engineering, P.C.
4216 North Hermitage
Chicago, IL 60613

DESIGNED	LAS
CHECKED	JLA
DRAWN	SAW
CHECKED	LAS

SHEET NO. 14 OF 26 SHEETS	F.A.P. RTE.	SECTION	COUNTY	TOTAL SHEETS	SHEET NO.
	68	(102)BR-1	LIVINGSTON	58	25
SN 053-0189			CONTRACT NO. 66822		
FED. ROAD DIST. NO. ILLINOIS FED. AID PROJECT					