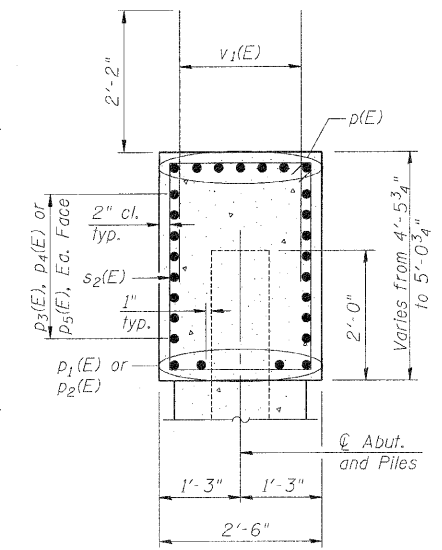
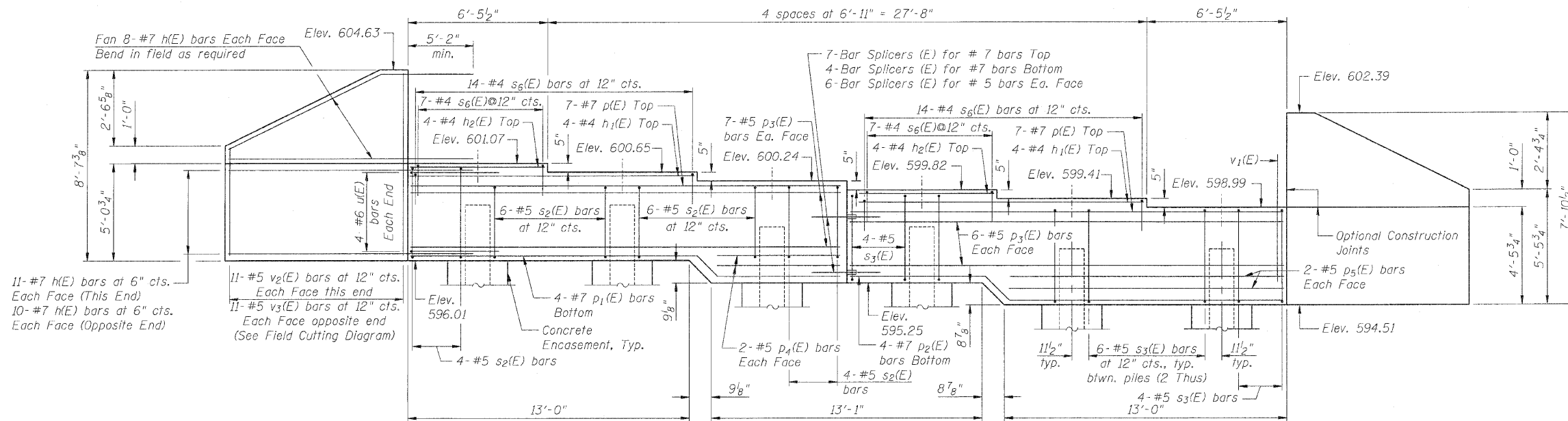


STATE OF ILLINOIS  
DEPARTMENT OF TRANSPORTATION

Notes:  
Pour steps monolithically with cap.



PILE DATA

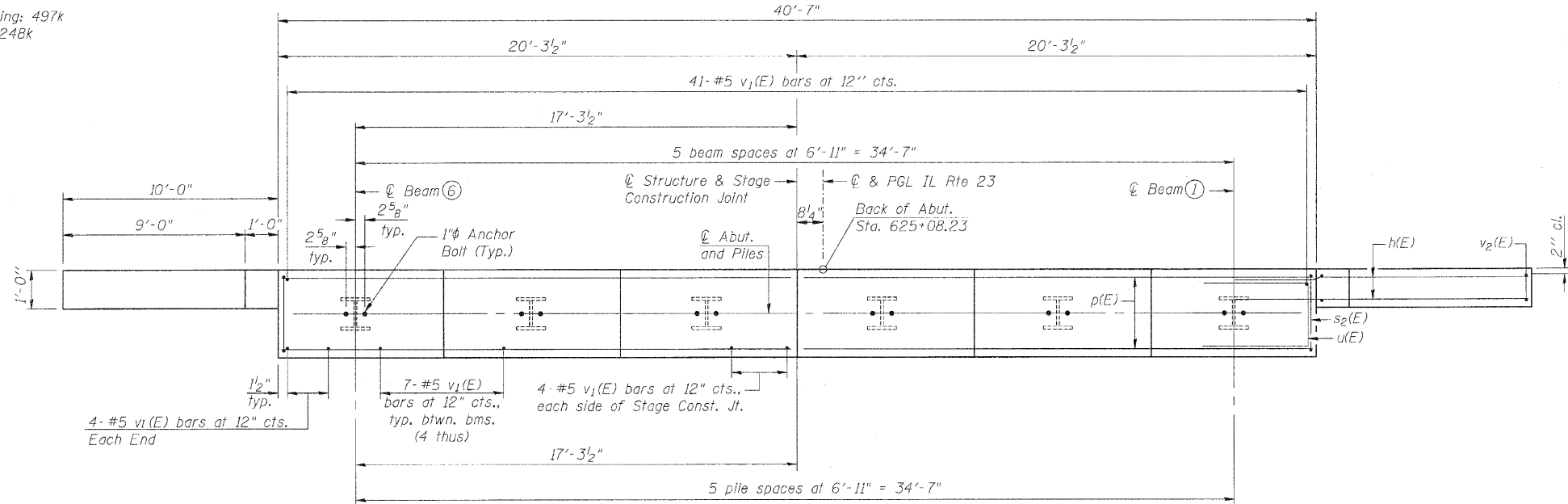
Type: HP12x63  
Nominal Required Bearing: 497k  
Factored Resistance Available: 248k  
Est. Length: 21'  
No. Production Piles: 6  
No. Test Piles: 0

ELEVATION

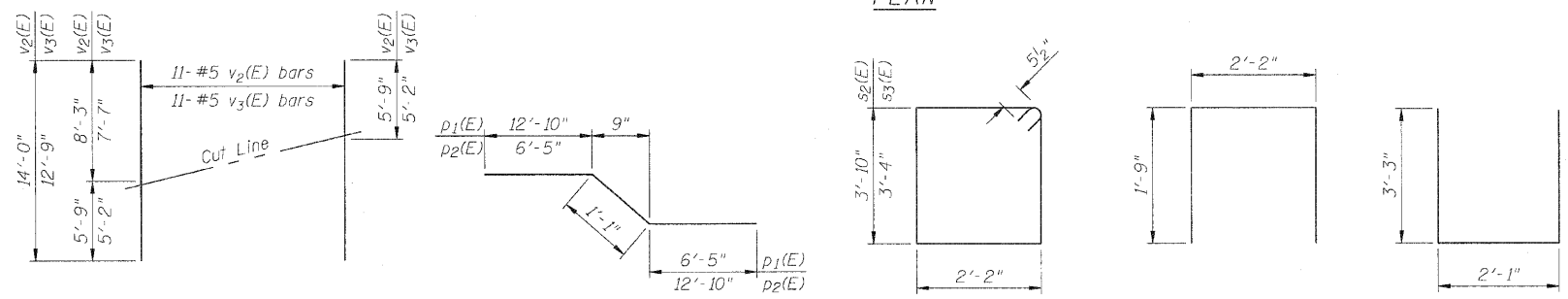
SEC. THRU ABUT.

BILL OF MATERIAL

Bar	No.	Size	Length	Shape
h(E)	74	#7	15'-5"	
h1(E)	8	#4	13'-1"	
h2(E)	8	#4	6'-1"	
p(E)	14	#7	20'-0"	
p1(E)	4	#7	20'-4"	
p2(E)	4	#7	20'-4"	
p3(E)	26	#5	20'-0"	
p4(E)	4	#5	6'-9"	
p5(E)	4	#5	13'-2"	
s2(E)	20	#5	12'-11"	
s3(E)	20	#5	11'-11"	
s6(E)	42	#4	5'-8"	
v1(E)	85	#5	4'-4"	
v2(E)	11	#5	14'-0"	
v3(E)	11	#5	12'-9"	
u(E)	8	#6	8'-7"	
Structure Excavation		Cu. Yd.	99	
Concrete Structures		Cu. Yd.	23.2	
Reinforcement Bars, Epoxy Coated		Pound	5,440	
Furnishing Steel Piles, HP12x63		Foot	126	
Driving Piles		Foot	126	
Concrete Encasement		Cu. Yd.	2.0	



PLAN



FIELD CUTTING DIAGRAM

Order v2(E) & v3(E) full length. Cut as shown and use remainder of bars in opposite face.

BAR p1(E) & p2(E)

BAR s2(E) & s3(E)

BAR s6(E)

BAR u(E)

For details of Bar Splicers, see sheet 21 of 26.  
For details of piles and Concrete Encasement, see sheet 22 of 26.  
Space reinforcement in cap to miss anchor bolts.

NORTH ABUTMENT  
STRUCTURE NO. 053-0189

ZROKA Engineering, P.C.  
4216 North Hermitage  
Chicago, IL 60613

DESIGNED	LAS
CHECKED	JLA
DRAWN	SAW
CHECKED	LAS

AI-0 11-1-09

SHEET NO. 17 OF 26 SHEETS	F.A.P. RTE.	SECTION	COUNTY	TOTAL SHEETS	SHEET NO.
	68	(102)BR-1	LIVINGSTON	58	28
SN 053-0189			CONTRACT NO. 66822		
FED. ROAD DIST. NO. ILLINOIS FED. AID PROJECT					

B:\2\2010 11-3-2010 11:32:33 AM C:\Drawings\56600-10\Short\Pol\CR\N66822-01F-MAbur.dgn