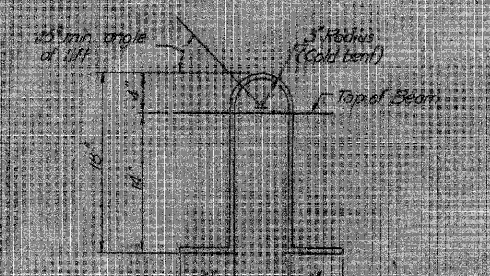
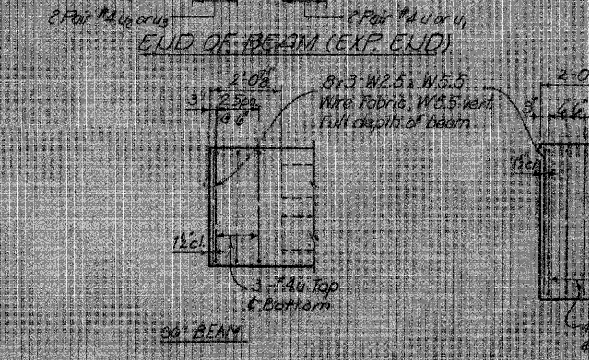
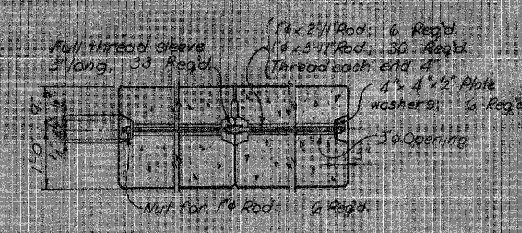
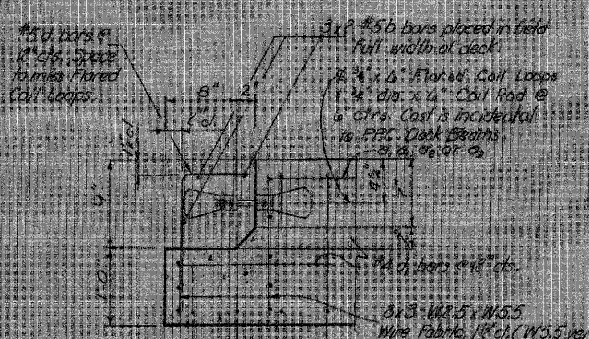


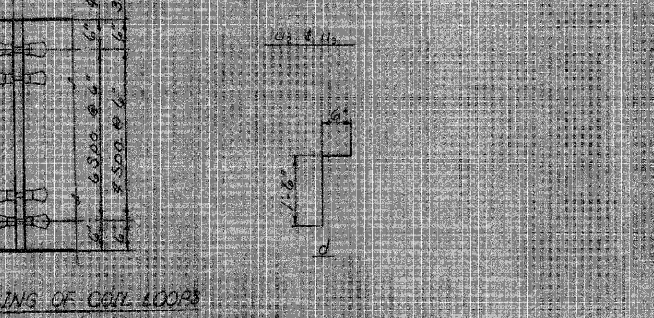
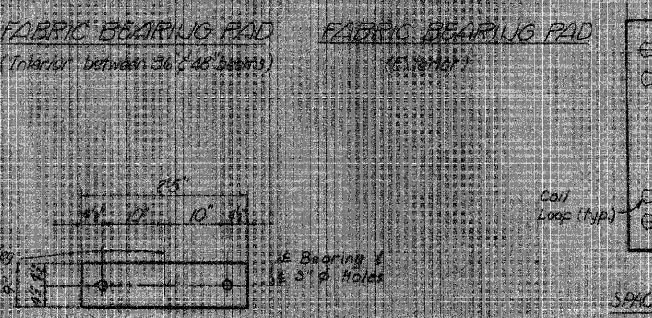
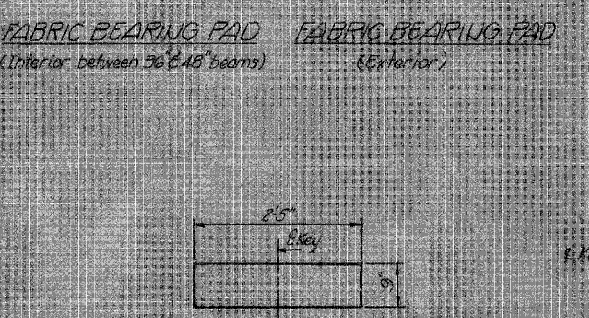
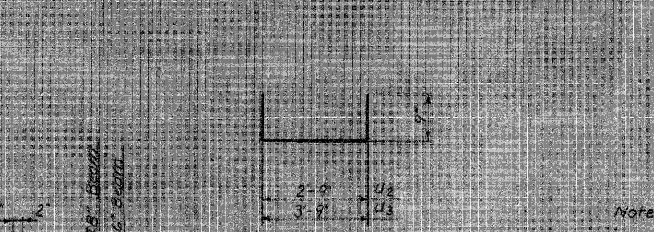
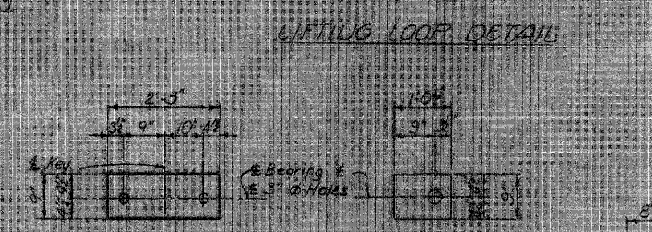
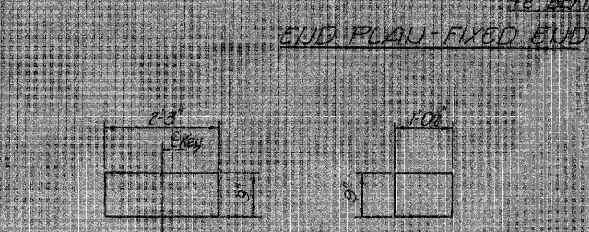
STATE OF ILLINOIS  
DEPARTMENT OF TRANSPORTATION

ROUTE NO. SECTION	COUNTY	TOTAL SHEETS	SHEET NO.	SHEET NO. 3
68 2A 102B	LIVINGSTON	16	7	9 SHEETS
FED. ROAD DIST. NO. 111 UNIMPROVED ROAD PROJECT				



BILL OF MATERIAL

Bar	No.	Size	Length	Shape
#3	96	#3	26'-0"	---
#4	176	#4	20'-7"	---
#5	68	#5	10'-7"	---
#6	136	#6	8'-2"	---
#7	88	#7	7'-9"	---
#8	400	#8	6'-9"	---
#9	16	#9	4'-4"	---
#10	80	#10	5'-2"	---
#11	12	#11	23'-6"	---
#12	92	#12	2'-0"	---
#13	88	#13	2'-7"	---
#14	288	#14	2'-8"	---
#15	866	#15	2'-6"	---
Precast Prestressed Concrete Deck Beams (27) 30' Ft				614
Reinforcement Bars				300
Class X Concrete				Cal. lbs. 85



Concrete in beam notches and abutment vertical walls.

Note C: Cost of reinforcement bars marked thus (E) is incidental to Precast Prestressed Concrete Deck Beams and weights are not included in the reinforcement bar quantities. Reinforcement bars designated (E) shall be epoxy coated.

Work this sheet with sheets 2 and 9.

SUBSTRUCTURE DETAILS  
FA ROUTE 68 (ILL 23) OVER  
SHORT POINT CREEK  
FA RT. 68, SEC. 102 B-1  
LIVINGSTON COUNTY  
STATION 625+82

DESIGNED: <i>Gregory J. Williams</i>	EXAMINED: <i>Darryl J. Hovant</i>
CHECKED: <i>James J. ...</i>	PASSED: <i>James J. ...</i>
DRAWN: <i>D. Richardson</i>	APPROVED: <i>James J. ...</i>
CHECKED: <i>M. C. ...</i>	DATE: <i>08/05/10</i>