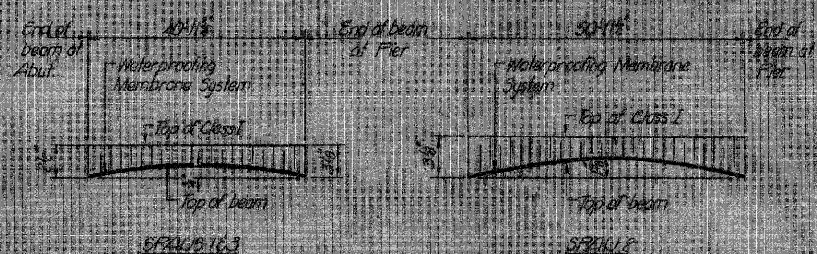
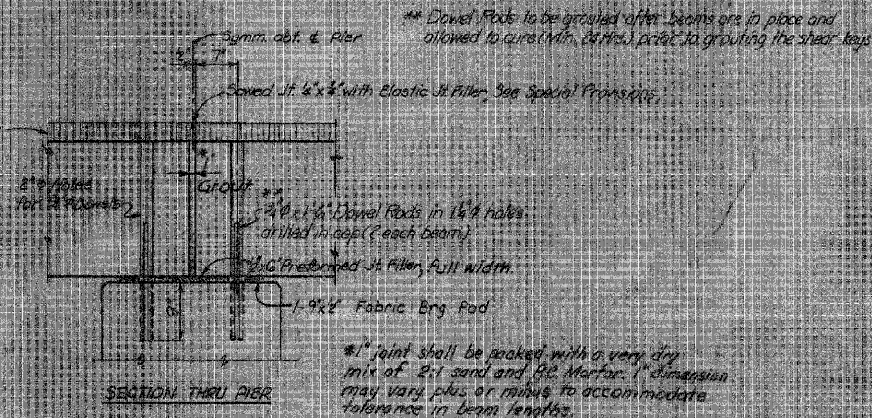
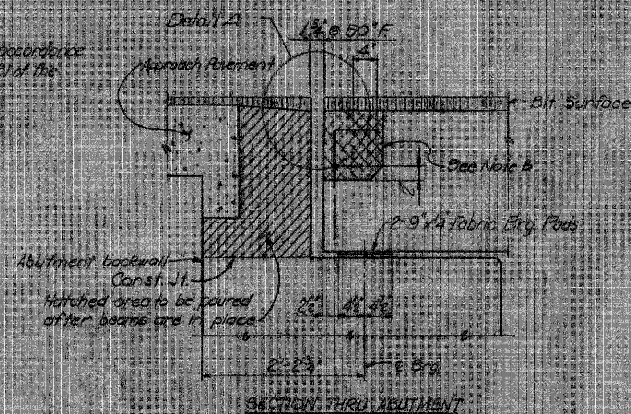


STATE OF ILLINOIS
DEPARTMENT OF TRANSPORTATION

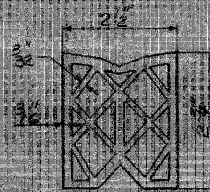
ROUTE NO. SECTION	COUNTY	TOTAL SHEETS	SHEET NO.
68-23 BR-1	LIVINGSTON	16	8
FED. ROAD DIST. NO. ILLINOIS FED. AID PROJECT		SHEET NO. 8	

NOTE
Cross-hatched areas to be poured after beams have been erected and joints grouted.

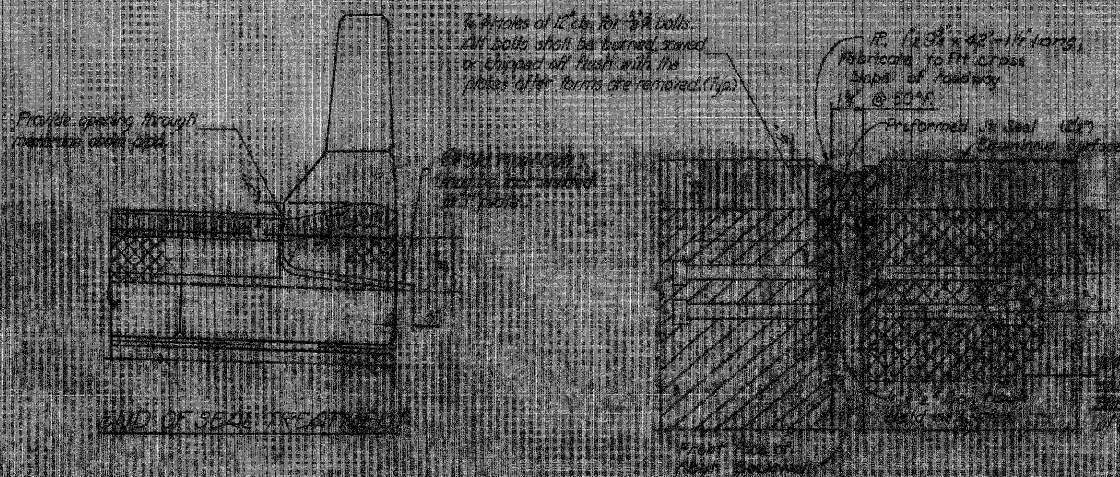
Note B:
Banded Cast In Place concrete with Article 504.15(a)(2) of the Standard Specs.



ANTICIPATED CAMBER DIAGRAMS
(Minimum thickness of Class I mix is 1 1/2\')



PREFORMED JOINT SEAL (2x2)



NOTES:

Prestressing steel shall be non-galvanized high strength stress relieved 7 wire strand Grade 270. The nominal diameter shall be 1/2\" and the nominal cross sectional area shall be 0.13 sq.in.
Lifting loops shall be 1/2\" diameter 6 x 65 class wire rope with fiber core and shall have a minimum ultimate tensile strength of 33000 lbs. (1-2\" E70ksi strands as shown).
The 1\" rods in the transverse tie assembly shall be tightened to a snug fit and the tie shall sit. Rods that receive transverse tie bar on outside shall be filled with grout after transverse tie assembly is in place.
Calcium Nitrate Corrosion Inhibitor, as covered in the Special Provisions shall be used in the concrete for precast prestressed concrete beam reinforcement. Bars shall conform to ASTM A615 Grade 60.
The bearing seat surfaces shall be prepared by shimming to insure firm and even bearing. No fabric adjusting shims of the dimensions of the bearing clearing pad shall be provided for each bearing.
Bearing surfaces shall be cleaned to remove form oil or other bond breaking material prior to shipment of the beams. Cleaning shall be done by sandblasting the bearing areas between top of the beam and the bottom edge of the resudy. An equal substitution of the low-relaxation strands for the stress-relieved strands will be permitted.

FILE NAME =	USER NAME = IDOTCAD	DESIGNED - SPF	REVISED -
W:\2299-03 - IL Route 23 Roadway\IGN\CADD Sheets\036822-Existing Structure Plans.dwg		DRAWN - AJP	REVISED -
		CHECKED - JMS	REVISED -
		DATE - 08/05/10	REVISED -

STATE OF ILLINOIS
DEPARTMENT OF TRANSPORTATION

EXISTING BRIDGE PLANS
FOR INFORMATION ONLY

SCALE: NONE SHEET NO. 4 OF 15 SHEETS STA. TO STA.

F.A. RTE.	SECTION	COUNTY	TOTAL SHEETS	SHEET NO.
68	(102) BR-1	LIVINGSTON	58	41
CONTRACT NO. 66822			ILLINOIS FED. AID PROJECT	